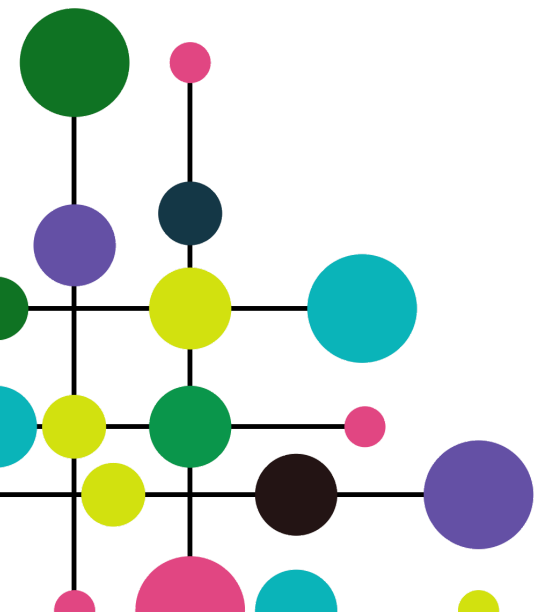


MAT Safeguarding Statement

MAT Version	2.0
Date written	July 2023
Last review date	December 2024
Next review due date	December 2026
Approved by Trustees	December 2024



Contents

Contents	2
Safeguarding Statement of Intent	3
Rigorous Recruitment Procedures:	3
Staff Training and Development:	3
Clear Policies and Procedures:	3
Designated Safeguarding Leads:	3
Effective Communication and Partnership:	4
Curriculum and Personal, Social, Health and Economic Education (PSHE):	4
Continuous Monitoring and Review:	4
Stakeholder Engagement:	4
Contact Information:	4

Safeguarding Statement of Intent

At Robin Hood Multi Academy Trust, we are committed to providing a safe and secure environment for all members of our school community. This safeguarding statement of intent outlines our commitment to safeguarding and promoting the welfare of children and young people in our care, in line with statutory guidance including *Keeping Children Safe In Education* (KCSIE) and *Working Together To Safeguard Children*.

Our ethos, as reflected by our website www.robinhoodmat.co.uk, serves as the foundation of our approach to safeguarding. We believe that every child and young person has the right to grow and develop in an environment that is free from harm, abuse, and neglect. We strive to create an inclusive, nurturing, and respectful culture that celebrates diversity and values the wellbeing of all individuals.

To fulfil our commitment to safeguarding, we have implemented the following measures and practices across our Multi Academy Trust:

Rigorous Recruitment Procedures:

We adhere to statutory recruitment processes, including comprehensive background checks, DBS checks, Prohibition from Teaching checks, and other vetting procedures, to ensure that all staff members, volunteers, and contractors working with children and young people are suitable and safe to be in their roles.

Staff Training and Development:

We provide regular safeguarding training and professional development opportunities for all staff members to ensure they are equipped with the knowledge and skills necessary to;

- identify signs of abuse or neglect
- understand the reporting procedures
- respond appropriately to concerns

All training is reviewed and updated in line with changes to statutory guidance.

Clear Policies and Procedures:

We have established a comprehensive set of safeguarding policies and procedures that are regularly reviewed and updated. These include

- Safeguarding
- Staff Code of Conduct
- Whistleblowing
- Positive Handling
- Intimate Care

These policies are accessible to all staff, children, parents, and stakeholders via our website and the websites of our schools.

Designated Safeguarding Leads:

Each school within our MAT has a designated safeguarding lead responsible for coordinating safeguarding strategy and practice, supporting staff, and liaising with external agencies. Our DSLs;

- Receive specialised training to fulfill their roles effectively
- Collaborate within a Trust-wide DSL network to share best practices and enhance safeguarding procedures across the MAT

At the MAT level, the Safeguarding Lead oversees safeguarding practices across all schools, ensuring consistency and compliance with statutory requirements. This role involves providing strategic guidance,

coordinating Trust-wide training, and supporting school-based DSLs. The MAT Safeguarding Lead can be contacted at cheath@robinhoodmat.co.uk.

Additionally, a Trustee with responsibility for safeguarding provides governance oversight, ensuring safeguarding remains a priority in all decision-making processes. The Safeguarding Trustee regularly reviews safeguarding reports and liaises with the MAT Safeguarding Lead to monitor effectiveness.

Effective Communication and Partnership:

We promote open and transparent communication between staff, children, parents, and external agencies. This includes;

- encouraging the reporting of any concerns or incidents
- actively listening to, and supporting, those who raise concerns
- Taking swift and appropriate action when required
- Collaborating closely with local safeguarding partners and agencies

Curriculum and Personal, Social, Health and Economic Education (PSHE):

We deliver a well-rounded curriculum that includes age-appropriate safeguarding education, covering topics such as;

- personal safety
- healthy relationships
- online safety
- resilience.

Our EPIC Curriculum focuses on key themes such as Power and Community to ensure our pupils are prepared for the next stage of their education and equipped to stay safe and make informed decisions.

Continuous Monitoring and Review:

We regularly monitor and review our safeguarding practices to ensure they remain effective and in line with statutory requirements and best practices. This includes;

- Seeking feedback from staff, pupils, parents and other stakeholders
- Conducting regular audits and inspections to assess safeguarding provision
- Reporting safeguarding updates to trustees for oversight and scrutiny

This safeguarding statement is a living document that will be regularly reviewed and updated to reflect changes in legislation, guidance, or best practice. Together, we strive to create an environment where all children can thrive, feel safe, and reach their full potential.

Stakeholder Engagement:

We are committed to engaging with parents, carers, pupils, staff, and external agencies to create a culture of vigilance and collective responsibility for safeguarding. Feedback mechanisms include;

- Surveys and consultation meetings
- Parent forums and school councils

Contact Information:

If you have a safeguarding concern, please contact the school's Designated Safeguarding Lead. For MAT-wide safeguarding concerns or enquiries, please contact the MAT Safeguarding Lead.