

Female Teacher of PE (1 Year Fixed Term)

Alcester Grammar School

MPS /UPS Full time FTE 1.0

September 2026 - August 2027



Welcome from the Principal

Thank you for showing an interest in working at Alcester Grammar School. AGS is truly a special, unique and outstanding institution that offers a **rich, ambitious curriculum** and a **broad all-round education**, supported by **outstanding pastoral care**. We are looking to appoint a **Teacher of PE** who can both convey a real enthusiasm for the subject and contribute fully to the [school's wider aims and vision](#). I very much hope that this booklet, in conjunction with our [website](#), will help you to understand both the specific advertised role and the school more widely.

At AGS we know and understand that our staff are key to our success. As Principal, I promise every member of staff appointed to AGS every support I can offer. If you would like to talk through the post prior to application, then please don't hesitate to contact me at r.thorpe@alcesterags.com. Tours of the school can also be arranged - we would be delighted to show you around.

Thank you again for your interest in the post – please don't hesitate to get in touch



Racnel Thorpe - Principal



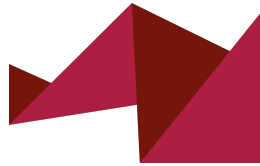
'Alcester Grammar School is a thriving and happy place' (Ofsted 2022)



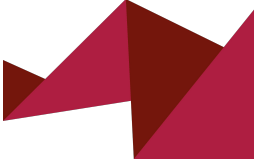
Why work at AGS?

Why do AGS staff generally stay so long and describe the school as the best that they have ever worked in?

- At AGS teachers have the **freedom to teach**. Students have a thirst for learning, they are highly motivated and engaged. Teaching at AGS is **fun and rewarding**.
- A culture of **professional autonomy** and a supportive staff - you join a real '**AGS Family**'.
- We recognise that our staff (like our students) have other commitments away from school and are entitled to a **healthy work-life balance** and we support our staff with family or other commitments wherever possible.
- **High quality bespoke CPD** is provided for all staff - we are committed to supporting professional development.
- We are located in a highly convenient location in South Warwickshire, just over half an hour's drive from Birmingham and easily commutable from Worcester, Stratford, Coventry, Warwick or Cheltenham. It is a **beautiful part of the country** with superb amenities and eminently affordable housing. Anybody joining us is likely to see not just a significant increase in the quality of their professional life, but a commensurate increase in the quality of life outside of school.
- **Free onsite parking, onsite gym and multi-faith prayer room**



**'The new Principal and Senior Team provide exceptional leadership'
(Ofsted 2022)**



Learning at AGS

AGS is a unique and special place to learn. We take a holistic view of learning, emphasising the rewards of deep understanding of the subject, instilling a love of learning and its challenges. Our curriculum is knowledge rich, however we are equally committed to the development of specific learning skills, as shown in our definition of an 'Engaged AGS Learner'.

Our vision is to give each of our students the best possible future, and our curriculum is at the heart of this ambition. More information on our KS3 and KS4 curriculum can be found [here](#), whilst details of our 6th Form curriculum can be found [here](#).

At AGS we ask staff as well as students to be 'life-long learners', hence our commitment to bespoke CPD for all staff.

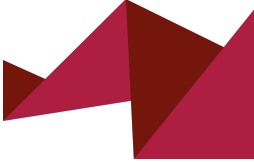
Engaged AGS Learner

ags Alcester Grammar School

- Takes responsibility for learning
Aims high
- Collaborates and shows curiosity
Creative and resourceful
- Links ideas
Breaks down problems
- Takes risks
Perseveres and practises
- Reflects
Listens and welcomes feedback
- Every learner can succeed...*

'Pupils love learning. They benefit from an exceptional curriculum'
(Ofsted 2022)





Pastoral at AGS

Pastoral care at AGS is second to none. Students are well supported by both the 7-11 and 6th Form Hubs - and all teaching staff play a vital role as a Form Tutor.

A key part of what makes AGS special is our commitment to developing 'DHBs' - Decent Human Beings. As a school we have recently worked to define this, as shown opposite. These traits are the focus of a strong assembly programme, that also aims to link seamlessly with our PSHE, Life Programme in the 6th Form and excellent Careers provision.

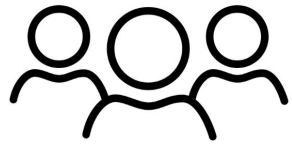
At AGS we are a fully inclusive school - Ofsted recently noted that pupils 'treat everyone with courtesy and respect those with different lifestyles and backgrounds. Pupils have a strong understanding of equality, diversity and inclusion. They accept that individuals can be themselves'.

Student voice is important at AGS; the Student Senate meet half termly to feed back to SLT.



Decent Human Being

- Kind
- Polite
- Inclusive
- Empathetic
- Respectful
- Responsible
- Honest
- Community-minded

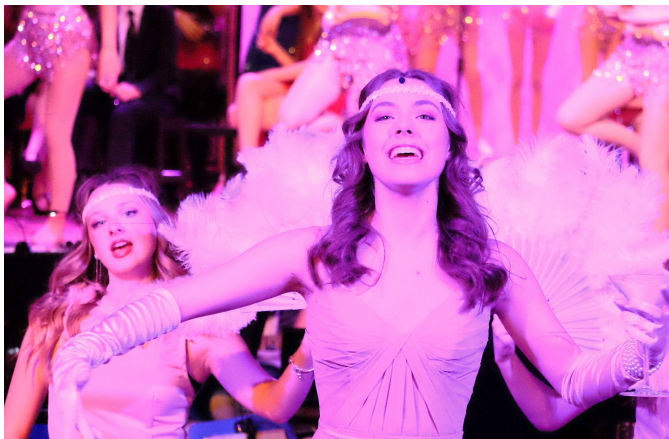


Making a positive impact...

'Pupils' behaviour is exemplary' (Ofsted 2022)



Opportunities at AGS



AGS offers a wide variety of extra and super-curricular opportunities beyond the classroom. We believe that all our students should have the opportunity to develop new skills and find different interests and hobbies. Taking part in clubs is also a wonderful way to make new friends and have fun with others who share similar interests.

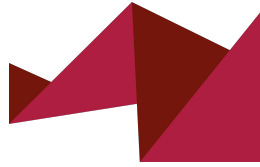
Students are able to take part in a wide range of sports, music and drama opportunities as well as variety of co-curricular and fun clubs and societies. These are led by staff in their specific field of expertise and/or interest area and a number of clubs are also initiated and run by our students themselves.



As a staff member joining AGS, it is an expectation that you will play a full role in all areas of school life - not just in the classroom. In return you can expect opportunities to travel the world on our significant number of international trips, to work with students in new and creative ways and to share your own passions (often outside your subject area) with our curious and committed students.

'Pupils welcome opportunities to extend their experiences wherever possible' (Ofsted 2022)

The Department



All members of the department teach across the full age range, where possible. At KS3 year 7, 8 and 9 are taught PE in mixed gender groups and a further lesson as single sex. Depending on their timetable, members of staff are expected to deliver all sports/disciplines, including dance where applicable. In KS4 students are given responsibility over their activities whilst being advised to select a well-balanced programme. In KS5, students in year 12 must attend a minimum of one hour per week and year 13 are encouraged to attend - with uptake always high. For Sixth Formers there is a choice between 'Performance' and Recreation' options and activities on offer include rowing, zumba, basketball, rugby, netball, football, yoga, volleyball and much more! Many of the sixth form students attend more than one session and use the PE area in their non-contact periods.

Our facilities include a sports hall, gym/dance studio, a well-equipped fitness room that includes 10 concept 2 ergos and a teaching conference room. The school has playing fields about 250 metres from the main school buildings on which rugby and football pitches are marked as well as grids. In the summer there is a 400 metre athletics track, long jump pit and ample space for all other field events. There are five rounders and two softball pitches. On site there are also five tarmac tennis courts, one outside basketball court and four netball courts.

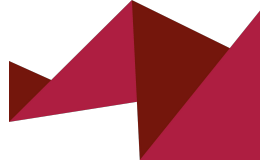
The school offers OCR GCSE and A level PE to a large number of students - we currently have 2 groups in year 10, 2 in year 11, 2 in year 12 and 3 in year 13. Again, all staff are expected to contribute to the delivery of these specifications.

The school values the role of Physical Education extremely highly in the development of the students. This is reflected by the extensive extra-curricular offering, including the delivery of and opportunities to be involved in basketball, hockey, football, netball, rugby, cricket, rounders, softball, badminton, tennis, athletics, cross country, swimming, gymnastics and dance. This list is not exhaustive! A number of very committed members of staff from other departments are involved at KS5, and also help with the running of our extracurricular clubs and fixtures programme. The school has been very successful in many sports and represented South Warwickshire at Level 3 competitions on a regular basis. We also take part in Warwickshire and National competitions and run a number of national and international trips - e.g a football & netball tour to South Africa in Easter 2024.

'Teachers deliver lessons with passion' (Ofsted 2022)



Person Specification



It is expected that the successful applicant will be able to fulfil the following criteria:

Qualifications :

- QTS and a good honours degree in a related subject (ECTs are welcome)

Experience:

- Ability to teach Core PE across KS3-5. The ability to teach GCSE and A level would be an advantage, but is not essential.

Relationships:

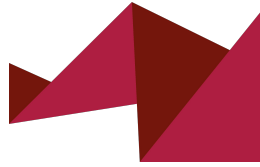
- A commitment to students as individuals
- A sensitive attitude to students of all abilities and ages and the ability to differentiate teaching to meet the needs of the most able and those with Special Educational needs
- An ability to create a stimulating and challenging learning environment for students
- A recognition of the importance of partnership with parents
- A supportive and cooperative approach to colleagues

Personal Characteristics:

- A commitment to the AGS ethos
- A willingness to continue learning and developing as a teacher
- A reflective approach to their own practice and to the overall performance of the department
- Hard working and adaptable
- Happy to work independently or in collaboration
- Able to carry initiatives through to their conclusion
- Friendly and approachable
- Well organised and able to meet deadlines
- Demonstrate a passion for the subject and an ability to enthuse students of all ages
- A commitment to safeguarding children's well being
- A commitment to playing a part in the wider life of the school

'They (pupils) love coming to School' (Ofsted 2022)

How to apply...

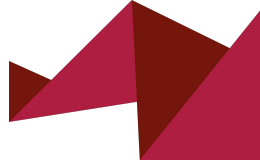


- Please click [here](#) to apply via the link on the AGS website
- Applications close at 8am on Monday 18th May although we reserve the right to interview early.
- Thank you for your interest in the role. If you would like to talk through the role prior to application, then please do not hesitate to contact me at r.thorpe@alcestergs.com.



'Alcester Grammar School is a thriving and happy place' (Ofsted 2022)

Safeguarding and Equal Opportunities



Safeguarding

Alcester Grammar School is committed to safeguarding and promoting the welfare of children and young people. We expect all staff to share this commitment and to undergo appropriate checks, including enhanced DBS checks.



Equal Opportunities

Alcester Grammar School is committed to developing a culture of inclusion in our school for the benefit of all staff, pupils and governors. We believe that all staff should thrive irrespective of race, religious beliefs, disability, gender, gender identity, and sexual orientation. We recognise and respect values and difference and we work to remove any barriers which inhibit the development of people, including recruitment and retention.

'Pupils feel safe here' (Ofsted 2022)



Should you have any questions or queries regarding this position, please do not hesitate to contact:

Mrs Karen Andrews- HR Manager

k.andrews@alcestergs.com

01789 762494

ags Alcester
Grammar
School