



Queen
Elizabeth
School

Prospectus

Ambition • Integrity • Determination • Kindness

Ambition Integrity



"This is a highly inclusive school where pupils learn to value and celebrate each other's differences"
Ofsted 2023

Welcome

I am delighted to welcome you to Queen Elizabeth School. In choosing us you will encounter an aspirational school bursting with a vibrancy and passion for everyone to succeed.

We are ambitious for our students. We want to empower them to achieve the best possible results, to progress to excellent further and higher education institutions and then secure fulfilling careers. Whilst academic success is important, we also foster a love and passion for art, music, dance, theatre, sport and culture within each and every student.

Our academic curriculum is enhanced by a wealth of extra curricular activities including Duke of Edinburgh awards scheme, Luton Town Football Academy, London Musical Theatre Orchestra. We also offer a wide range of trips with students skiing in USA, Canada, France and Italy, History trips to Poland and Germany, MFL to France and Spain as well as planning for a World Challenge project. We have a highly experienced and dedicated team of teaching and support staff, who nurture, challenge and celebrate the diverse interests and talents of our students.

During their time with us, your child will engage with successful universities, businesses and organisations who will provide unique experiences that will expand horizons and open their eyes to the world around them. Luton Town FC Community Trust, Luton Rising, Luton Music Service, The Shakespeare Schools Festival and London Luton Airport to name a few.

Our core values – Ambition, Integrity, Determination and Kindness – are central to school life. They promote high expectations and standards, encourage respect for one another and ensure we make the most of every opportunity to praise, celebrate, reward and take pride in all that we do.

Together I am confident that we will enrich our young people's lives personally and socially, enabling them to develop their individual characters and acquire the skills to progress and be ready for the modern world.

Whilst they will have every opportunity to pursue these personal interests and talents, our students will also learn to appreciate the importance of community and the contribution they must make to support it locally, nationally and globally. Through our core values, students are guided to become responsible citizens and leaders of the future who are ready to make a difference.

As our school has grown, more and more young people in the community have benefitted from the excellent teaching and learning, support and resources within the school. QE6 has classes that are smaller in size which will allow teachers to get to know every individual student and how to get the very best out of them. This will enable students to get constant support and feedback on their academic progress so that they know how to improve every step of the way. Our expert staff have a wealth of experience in working with students at post-16 level and our facilities are ideal for getting students ready for their next steps. A number of students have progressed onto universities, apprenticeships and the wider world of work which have been built in their academic foundation from attending QES.

This is an incredibly exciting time as we continue to make outstanding academic progress, providing a pathway to the brightest possible futures for our students. Join us and be part of something transformational

Mrs R McPherson
Headteacher



[Click here to visit our QE6 website](#)

An aspirational learning experience

[Click here for our video on the curriculum](#)



We expect our students to approach their learning to reflect the school values of Ambition, Integrity, Determination and Kindness. We are proud of our broad and innovative curriculum which is delivered and taught by our expert team of committed staff who have deep subject knowledge, complemented by an inspiring love for their subjects.

We have carefully crafted our approach in the classroom to ensure that every individual student is able to achieve their academic potential. We embrace innovation, offer challenge, instil a passion for learning, ignite intellectual curiosity and prepare students for their next steps.

In Years 7 to 9, students are given a thorough grounding in the core subjects of English, mathematics and science which is enriched and complemented by the performing arts, languages, humanities and sport. In Year 10, we provide different pathways to enable students to focus on the subjects which they are most passionate about and interested in and that are likely to play a more prominent role in their futures.

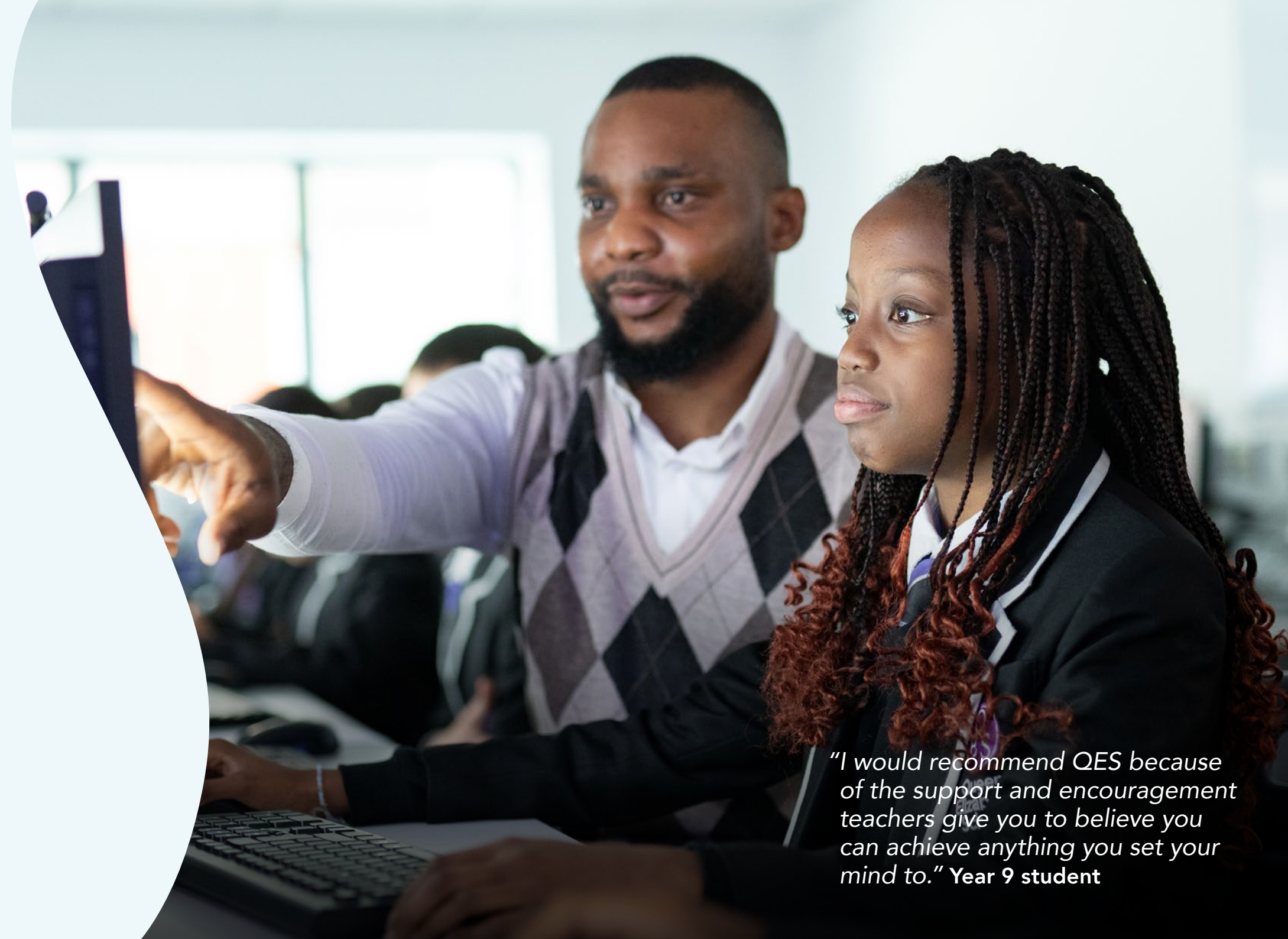
Our Sixth Form, QE6, sits at the heart of the school and provides a seamless progression beyond GCSEs. We offer a wide range of pathways, including A Levels, vocational qualifications, and a Level 2 programme for students wishing to re-take English and maths alongside further study.

At QE6, learning extends well beyond the classroom. Students have the opportunity to broaden their horizons through the Extended Project Qualification, enrichment and pastoral programmes, work experience, trips and visits, and talks from specialist guest speakers.

Our students have gone on to achieve outstanding success, progressing to Russell Group universities, higher-level apprenticeships, and a wide variety of rewarding career pathways.

Our modern and contemporary school provides a stimulating and engaging environment for teaching and learning in which staff and students alike can achieve, thrive and flourish.

Our exemplary facilities and resources include fully equipped science laboratories, ICT suites, art rooms and a dedicated music block complete with Mac suites and individual practice rooms. With professional lighting and sound equipment, our theatre is a stunning venue, perfect for staging performances. Our sports hall, fitness suite and free weights room, dance studio, playing field and 3G all weather pitch provide opportunities for students to pursue their sporting interests, develop their skills and compete in a variety of competitions, challenges, tournaments and championships.



"I would recommend QES because of the support and encouragement teachers give you to believe you can achieve anything you set your mind to." **Year 9 student**

Determination Kindness



[Click here for
our video on
transition and
pastoral care](#)



"I found the prospect of moving to secondary school quite daunting, but QES went to great lengths to make sure we were settled in and found the experience exciting, not scary." **Year 7 student**



A supportive community

Starting secondary school can be both an exciting and unsettling time with new challenges to face, environments to explore and people to meet.

Our dedicated transition programme encompasses a wide variety of activities to ensure our new Year 7s settle long before their first day in September. They will be involved in taster afternoons, QES in action events, team building events and transition meetings. We will also have gathered important information about their academic and social development prior to commencing their journey at Queen Elizabeth School.

Throughout their time with us, students are supported through our exceptional pastoral system which focuses not only on their academic achievement but personal development, mental health and wellbeing.

A team of Form Tutors, Year Support Assistants and Heads of Year are always on hand to provide bespoke advice and guidance as required. Our pastoral team is also supported by our in-school councillor and our medical officer we also commission an external service Grow Therapeutic who work therapeutically with individuals and groups. We also link with external agencies such as Youthscape and CHUMS, and work closely with CAMHS (Child and Adolescent Mental Health Service) to further support student wellbeing.

A successful partnership with parents and carers is also one of our key priorities. We will work tirelessly to ensure that there is an open door policy along with regular school to home communications.

A wealth of enriching opportunities

We offer a vast selection of enriching opportunities both within and beyond the classroom, allowing our students to develop their passions, explore new possibilities and build the skills, characteristics and values they will need to succeed in work and life.

From netball and rugby to gymnastics and athletics, there is something on offer for the complete beginner or elite athlete. Our students can represent their school in a range of team and individual sports, competing at a local and national level.

Our thriving and successful Performing Arts Department provides many opportunities for students to act, direct, design, create and produce. Opportunities are endless with the possibility of taking up an instrument, joining the Big Band, performing in the school production, being involved behind the scenes, controlling the lighting desk and mastering production skills.

Throughout the school year, there are numerous occasions for students to take centre stage and showcase their talents; from school productions, music debating competitions, dance shows and sports days to events in the local community.

Educational day trips and residential visits are also built into the school year by a wealth of extra curricular activities including Duke of Edinburgh awards scheme, Luton Town Football Academy, London Musical Theatre Orchestra. We also offer a wide range of trips with students skiing in USA, Canada, France & Italy, History trips to Poland and Germany, MFL to France and Spain as well as planning for a World Challenge project.

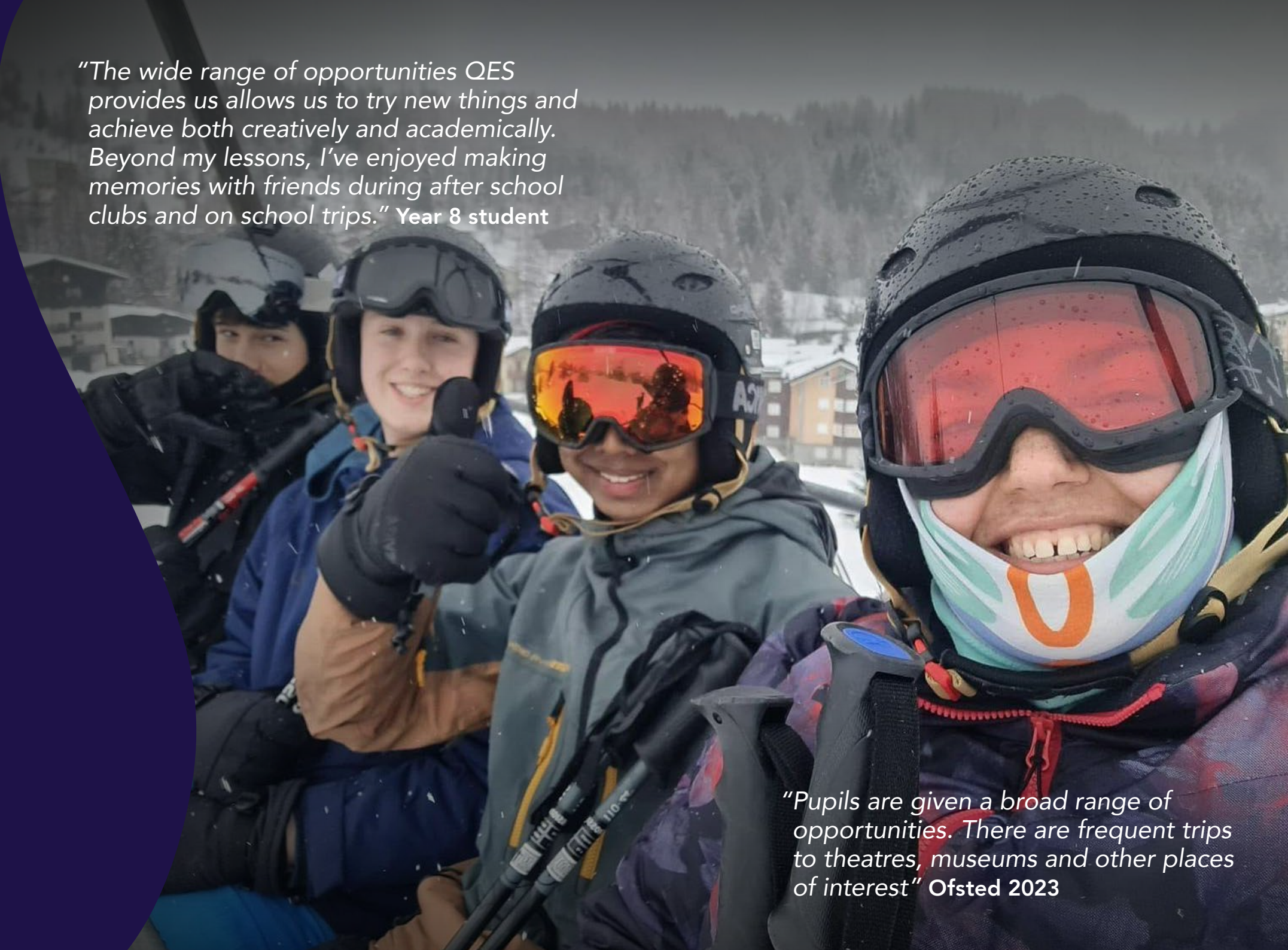
We have many partnerships that offer our students the opportunity to focus their talents and interests; for example Luton Town FC, Crawley Green FC, Luton Caribbean Cricket Club, Luton Music Service, London Musical Theatre Orchestra, Shakespeare School Festival.

Students' personal and interpersonal skills will also be honed, enabling them to take advantage of future opportunities as and when they present themselves. Many of our students relish the chance to undertake the Duke of Edinburgh's Award scheme at bronze, silver and gold levels, take up positions of responsibility on school council and then representation on school Parliament, raise considerable sums for charities, campaign for environmental change, and engage with the local community.

[Click here for our video on enrichment](#)



"The wide range of opportunities QES provides us allows us to try new things and achieve both creatively and academically. Beyond my lessons, I've enjoyed making memories with friends during after school clubs and on school trips." Year 8 student



"Pupils are given a broad range of opportunities. There are frequent trips to theatres, museums and other places of interest" Ofsted 2023



"I aspire to run my own business one day and know that the skills and qualifications that I have, and will, gain at QES is helping me towards achieving this dream."

Year 10 student

[Click here for our video on careers](#)



A firm foundation for future success

At Queen Elizabeth School, you can be assured that we fully prepare our students for the next big steps whether that's options choices for the move from Key Stage 3 to Key stage 4, the progression to selecting courses at Post 16 or the exciting times of work, apprenticeships or universities and colleges at a Post 18 level. We offer a study programme, which is tailored to individual needs, exploring all opportunities available to them. Students will also develop a career plan that supports them in making informed choices about their future.

During Careers Education students will be offered:

- Opportunities to explore different career paths
- Step into NHS competition
- Universities visits and tours
- Careers events with employers
- Year 10 work experience
- Volunteering opportunities
- Year 12 work experience

In addition, our careers programme helps students explore future aspirations, develop knowledge of careers and education pathways, whilst acquiring

the skills they will need to enter them successfully. We believe that the richness of our offer is enhanced through partnerships, networks and collaborative projects with other organisations at a local, national and global level.

QES is partnered with Unifrog, an online platform that offers information on apprenticeship and university guidance. This tool helps our students acquire the appropriate knowledge and skills to choose the options that will support their potential pathways for further and higher education.

We work with a range of organisations and industries that enable students to: maintain high academic standards and expectations, gain expertise and insights as well prepare them for the world of work.

QE6 offers a wide range of subjects both traditional A-Levels and vocational AAQs. Students can tailor their learning based on their individual strengths, passions and aspirations. Visit our QE6 website for more information on our Sixth Form.



[Click here to visit our QE6 website](#)

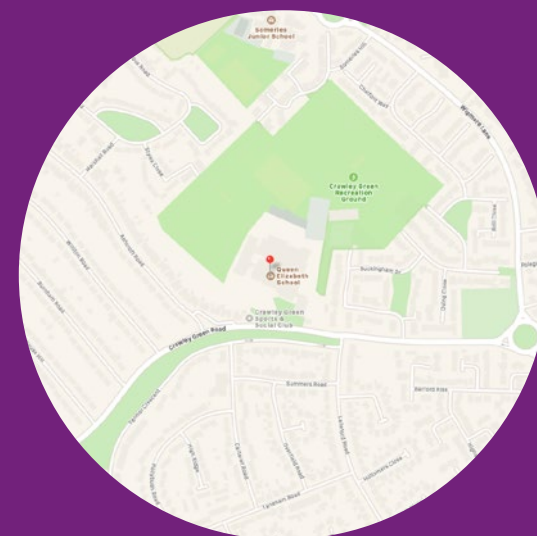


"I have really grown as a person over the last five years. QES promotes and celebrates diversity and the individuality of all its students, encouraging and supporting us to follow a path that is right for us." **Year 11 student**

"Pupils work hard and do their best. As a result, they achieve well during their time at Queen Elizabeth School"

Ofsted 2023

"The students and teachers here were so welcoming and supportive. I settled into school life quickly and made lots of new friends. QES has been a great experience so far." **Year 7 student**



In partnership with Centrebus we have a dedicated direct QES only bus service, the 819. The service picks up and drops off from the main school reception.

Visit our website to find out more about how your child can travel to school.



**Queen
Elizabeth
School**

Queen Elizabeth School
Crawley Green Rd, Luton LU2 9AG
01582 436100

info@QESLuton.co.uk
www.qesluton.co.uk

Twitter @QESLuton Instagram qesluton Facebook @QESLuton