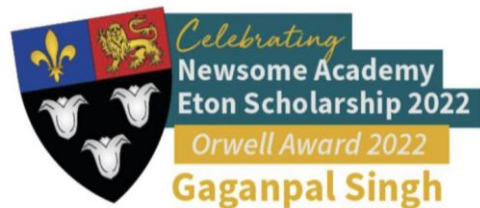




Newsome Academy

Everyone Exceptional Everyday

EDUCATIONAL TEACHING ASSISTANT INFORMATION PACK





- **Contract term:** Fixed Term 1 year
- **Salary:** Scale 4 NJC 7-11. Actual Salary - £22,950 - £24,461
- **Contract type:** 37 Hours Per Week, Term Time Plus 5 Days
- **Start Date:** ASAP
- **Closing Date:** Monday 5th January 2026 at 9am

Wider Information

- We are looking for a specialist who wants to make the next move to a prestigious role in a progressive Academy and Multi-Academy Trust that is constantly growing and gives opportunity to those that have drive and absolute care. You must be a forward thinking, dynamic and a resilient teaching assistant who, working in collaboration with the wonderful SEND Team, will provide high quality support to help take the department to the next level. You will be a natural inspirer, with the ability to work collaboratively with colleagues. It is crucial that you have a great understanding of the latest educational landscape and how to achieve success within these parameters.

Department Information

- You will work as part of our large SEND and Inclusion team to support a curriculum area. This is an exciting stage for the department as we have made many changes across the school over recent years and have consistently been high performing across the academy. The department consists of a 'family' of wonderful professionals who have an internal reputation of being an 'energetic, close and supportive'. You will have the advantage of being part of the awesome support and caring network that this generates – the word 'family' resonates through our Academy and Department!

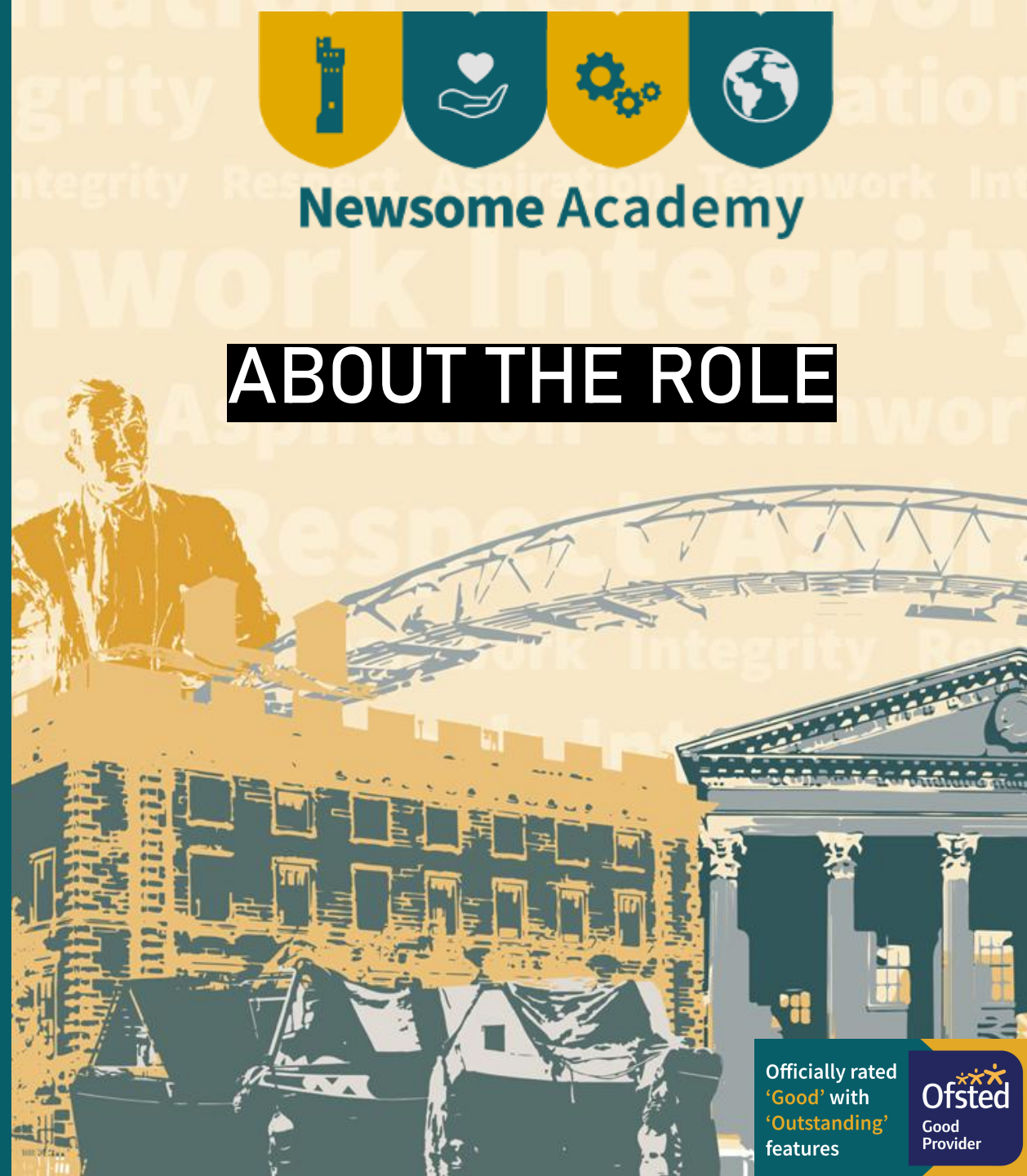
Support and further Career Opportunities

- We invest in and support our staff and over recent years have welcomed colleagues onto the Senior Leadership team and other whole school responsibilities as part of their development. We support outward facing initiatives through promotion of school visits and CPD training. We also have opportunities for colleagues to gain wider experience in whole school initiatives and this has supported the promotion of a number of internal appointments over recent years. Being part of a MAT also offers networking and career prospects for candidates wanting to progress in the future as we continue to grow and develop together. Our Trust is very much the heartbeat and offers an abundance of support and opportunity. This is echoed by our wonderful Governors and indeed community in which we serve.



Newsome Academy

ABOUT THE ROLE



Officially rated
'Good' with
'Outstanding'
features





Newsome Academy

Everyone Exceptional Everyday

ABOUT

US

Newsome Academy is a successful, oversubscribed secondary school, set in fabulous countryside in south Huddersfield. We have over 800 students and over 60 awesome teaching and support staff. We are very unique in the fact that we also have two specialist provisions - Hearing Impaired and Physically Impaired. These provisions allow students to be in mainstream lessons whilst getting the specialist support, they need. The Headteacher and the Senior Team are always present around school, whether this be on duty during social times or dropping into lessons to check on the school climate. We promote leadership and this is evidenced through our amazing students and wider staff teams. The school has seen a significant and exciting change and we have celebrated record-breaking results for the past few years. We are also the only school in Kirklees that are celebrating a student securing a Scholarship at Eton College in 2022.

Newsome is one of 10 Academies that for Impact Education Multi-Academy Trust. There are 2 Secondaries, 1 Through School, 1 Alternative Provision and 6 primaries. The Trust is on a mission to improve the life chances of children and young people and improve social mobility for the disadvantaged. Our vision is to be a Trust where hearts and minds connect; values-driven partners working collaboratively to ensure education impacts positively on students, families, communities and staff. Impact Academies are aligned to the Trust Mission, Vision and Aims. Our Academies have individual identities which reflect the diverse communities they serve. They have the autonomy to create, explore and learn from different practices and our Headteachers believe that leadership and personal accountability are founded on self-direction and reflection. We believe that collaborative leadership and strong partnership development can lead to significant positive impact on the quality of education through sharing the best collective practice. Our values of Heart, Mind and Connect underpin everything we do and our Core Principles and Aims articulate how we will live these out.



Officially rated
'Good' with
'Outstanding'
features

Ofsted
Good
Provider

To be a pupil at this school is to be part of a caring, closeknit family. Staff and pupils form strong relationships that underpin the school's work. Pupils are safe. They are nurtured to achieve their full potential. In the words of one pupil, echoing the sentiments of many, 'We belong here.'

Pupils respond admirably to the high expectations that staff have of them. They are happy, enjoy learning and achieve well. Teachers support pupils very well. Pupils learn a curriculum which is constructed and designed to give them the best start in life.

Pupils' conduct at the school is exemplary and an excellent model of inclusion. Pupils are unfailingly polite and exhibit the school's values of respect, integrity, teamwork and aspiration. Pupils are attentive in lessons and enjoy learning.

The school prioritises reading. Pupils are provided with many opportunities to read. They are encouraged to read aloud in class, practise new vocabulary and develop their oracy skills. Pupils receive weekly literacy seminar sessions in which they read and discuss a text together.

Transformative changes to the school have been made by skilled and determined leaders. They have a sharp understanding of the school's many strengths and remaining areas for development. Governors and trustees provide support and hold school leaders to account effectively.

**IN FEBRUARY 2024, WE
WERE PRAISED FOR MANY
THINGS. YOU WILL BE
JOINING A FANTASTIC
FAMILY!**



**Officially rated
'Good' with
'Outstanding'
features**


Ofsted
Good
Provider

Purpose

- To work under the guidance of Teaching/Senior Staff to implement and support classes and individuals with SEND in or out of the classroom. This could include those requiring detailed and specialist knowledge in areas of SEND and will involve assisting the Teacher in the whole planning cycle and the management/preparation of resources.

Duties and Responsibilities

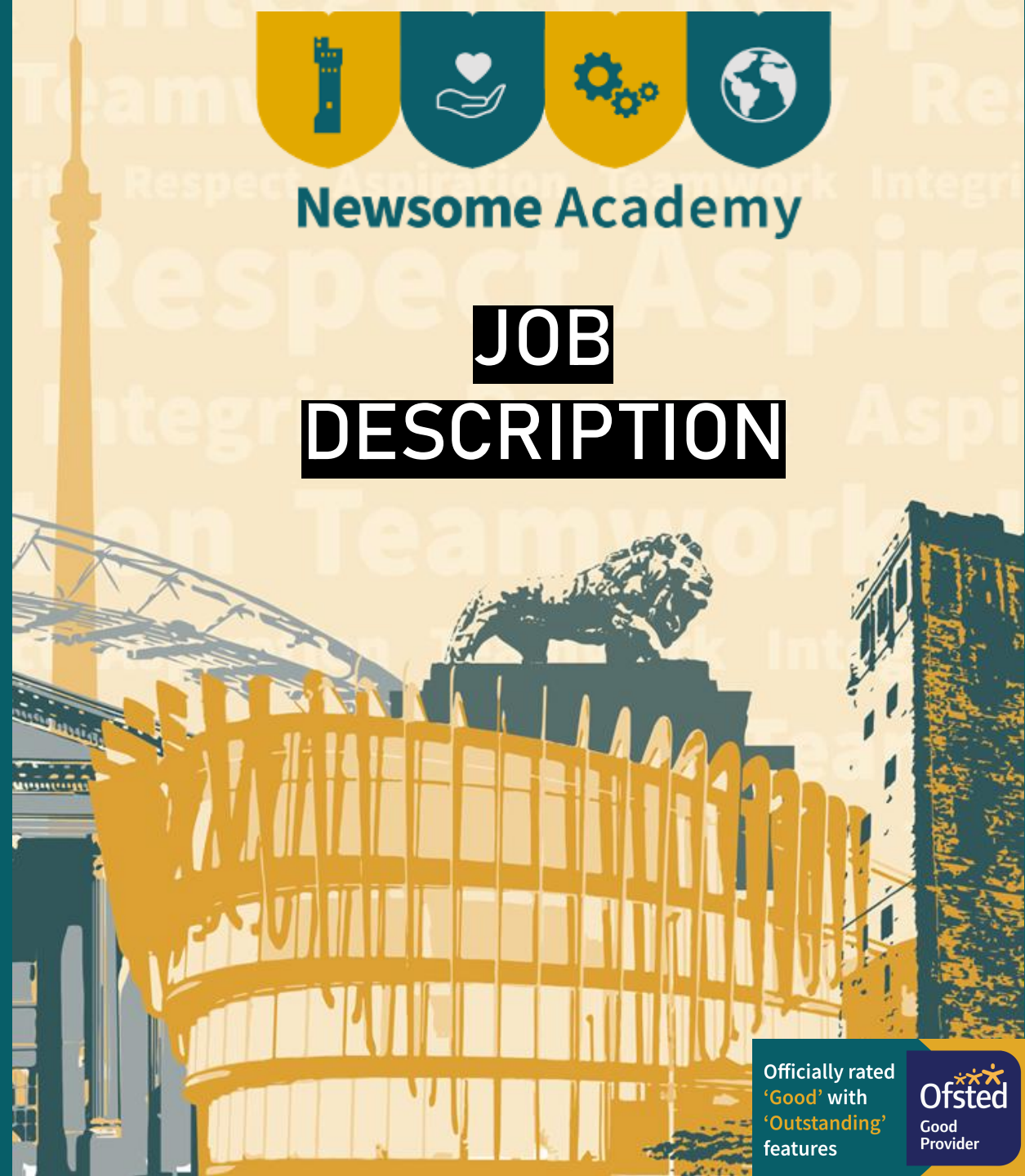
- Constantly uphold and promote our values and vision
- Work directly with the SEN team to ensure effective provision
- Provide students with clear behaviour expectations and ensure our system of sanctions and rewards is firm and fair whilst managing challenging and extreme behaviour of individual pupils
- Work with the teacher to ensure that progress is clearly recorded and relates to the learning objectives/goals for students
- In conjunction with the teacher provide one to one support for targeted pupils or groups of pupils on a short-term basis or for particular lessons, where there are behaviour barriers to learning for the pupils
- Supervise activities and assist with the general management and control of students in the academy
- To assist where required in the planning of learning activities
- Work with individuals or small groups to ensure interventions are delivered that meet the needs of the students and comply with the recommendations of their statements/EHCPs
- To participate in and assist in supervision of educational visits, in conjunction with the teacher / line manager
- Respond to the needs of all students with a sense of urgency
- To participate in and assist in supervision of educational visits, in conjunction with the Teacher/Line Manager
- To provide lunchtime / breaktime cover as required
- Liaise with relevant staff to ensure all students' needs are met
- Manage own workload and that of others to allow an appropriate work / life balance
- Work in effective partnership with other leaders in the Trust
- Support students throughout the day by fulfilling pastoral responsibilities
- Engage fully in the academy appraisal process to fulfil personal potential and be able to participate effectively in the implementation of the academy's goals and improvement plan
- Attend meetings / training and carry out administrative tasks and duties as specified on the academy calendar
- Consistently implement all academy policies
- Contribute to decision-making and consultation procedures
- To contribute to plans, reviews and evaluations of pupils by writing reports on pupils' progress and attendance at meetings
- Report any safeguarding concerns immediately to the Designated Safeguarding Lead
- Carry out any other reasonable duties as requested by the Headteacher/Deputy Headteacher and SENDCo

This job description is not necessarily a comprehensive definition of the post. It will be reviewed annually.



Newsome Academy

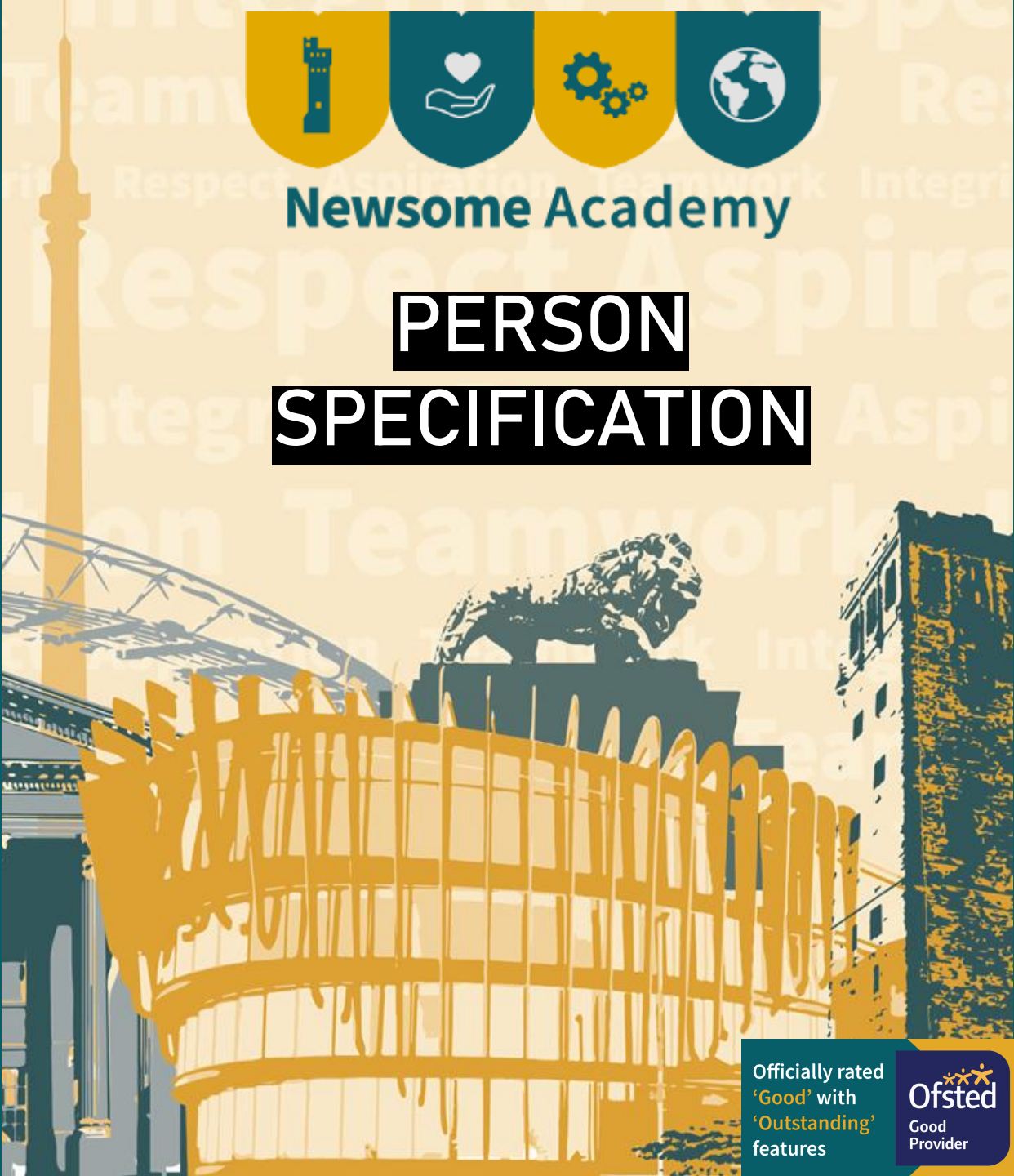
JOB DESCRIPTION



Officially rated
'Good' with
'Outstanding'
features



Attributes	Essential	Desirable	How Identified
Qualifications	<ul style="list-style-type: none">Numeracy .Literacy and IT skills to a level to assist students with their work (GCSE/O’Level Grade C or above)	<ul style="list-style-type: none">NVQ Level 3 for Teaching Assistants or equivalent qualifications or experienceTraining in relevant support strategies	<ul style="list-style-type: none">ApplicationCertification
Experience	<ul style="list-style-type: none">Values drivenStrong ICT skillsExperience of working with young people in relation to social, emotional, behavioural issuesExperience of working in a school setting	<ul style="list-style-type: none">Working in a school with a similar contextWorking with students with EALExperience of developing effective strategies to promote positive BehaviourExperience of managing challenging and extreme behaviour of pupils	<ul style="list-style-type: none">ApplicationInterviewReferences
Knowledge and skills	<ul style="list-style-type: none">High expectations which motivate and challenge studentsUnderstanding and commitment to Equal Opportunities	<ul style="list-style-type: none">Understanding of the secondary curriculum and other basic learning programmes/strategiesUnderstanding of Child Development and Learning	<ul style="list-style-type: none">ApplicationInterviewReferences
Character	<ul style="list-style-type: none">Strong moral purpose and drive for improvementAbility to relate to children and adultsValues-aligned & resilientAbility to work as a team memberAbility to work in a calm manner with children exhibiting behavioural difficultiesMotivated, enthusiastic and flexibleExcellent interpersonal skillsGood sense of humourDesire to develop yourselfAbility to receive and act on feedbackStrong attention to detailAbility to work under pressureCommitment to the full life of the academy	<ul style="list-style-type: none">Ability to liaise with the teachers to plan differentiated workAbility to think clearly and remain calm in an emergency situation	<ul style="list-style-type: none">ApplicationInterviewReferences



Officially rated
'Good' with
'Outstanding'
features





HEARTS & MINDS STRATEGY

SUPPORTING WORKLOAD & WELLBEING FOR EMPLOYEES...

- **Start of year arrangements** to support planning including additional September start of term INSET sessions for staff to 'settle back' into the new academic year. Staggered year group starts to enable more planning time for staff.
- **Luxury staffroom & working facilities** with fridges, freezers, water machines and complimentary tea/coffee.
- School Dog Mentor is here every day to bring a smile to our day – available for cuddles and walks at any time.
- **Seasonal staff events** including Christmas events and Friday meet-ups.
- **New facilities** & ICT in every classroom.
- Free lunch for duties and food provided for Open Evening and Parents Evening commitments.
- **Half-termly staff voice** to ensure each and every voice and opinion is heard.
- Free annual Flu vaccinations so staff don't have to spend precious personal time and money.
- **Free to use professional gym** for all staff and reduced rates on facility hire.
- Adapted facilities for working health – offering specific aids to enable health/disability-related requirements.
- **An extraordinary feel of positivity** where you are warmly greeted by all when you walk through the building.

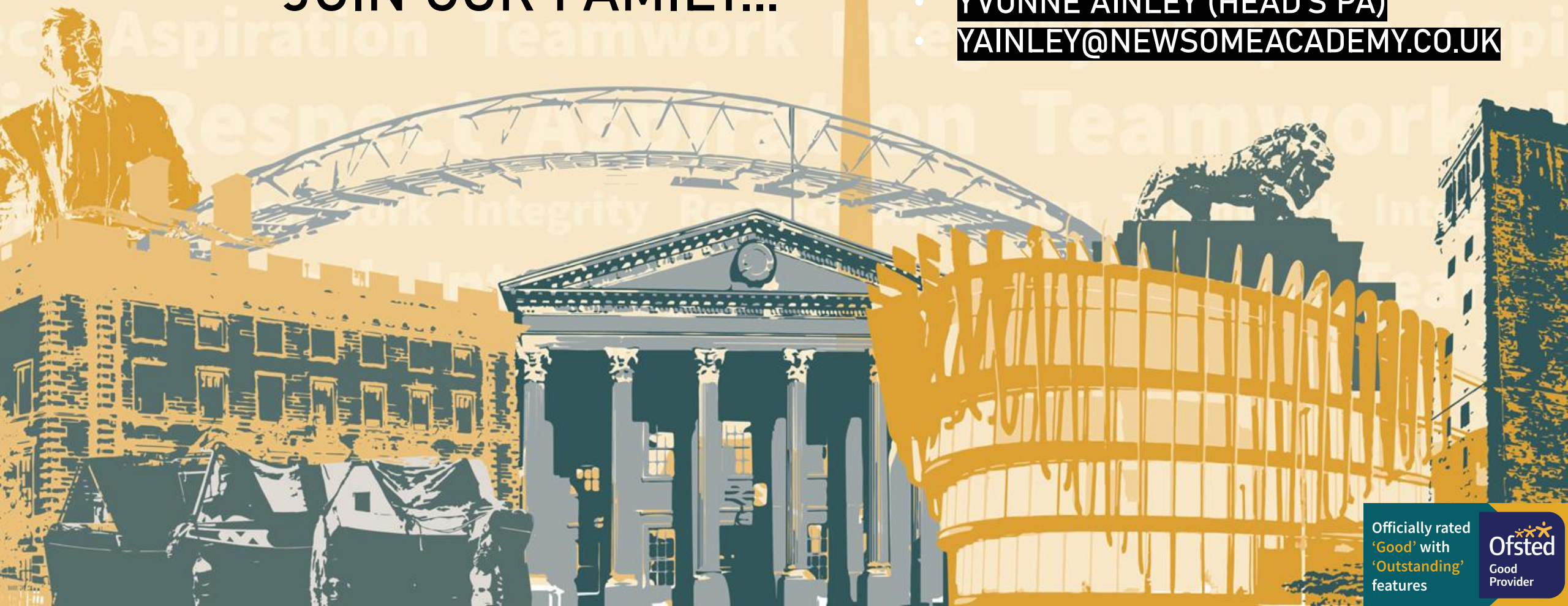




WE LOOK FORWARD TO YOUR APPLICATION TO JOIN OUR FAMILY...

CHECK OUR 'X' ACCOUNT TO SEE OUR
FAMILY IN ACTION AND GET IN TOUCH
FOR A HEADTEACHER VISIT &
INFORMAL CHAT ABOUT THIS EXCITING
OPPORTUNITY.

- **YVONNE AINLEY (HEAD'S PA)**
- **YAINLEY@NEWSOMEACADEMY.CO.UK**



Officially rated
'Good' with
'Outstanding'
features

