

Founded 1642



New Hall School

The Best Start in Life



Appointment of Lifeguard

Application closing date: midday, Wednesday 25 February 2026

Start date: March 2026 onwards

Welcome from Mrs Jeffrey, Principal



"Thank you for your interest in this opportunity at New Hall School. I joined the New Hall School community 24 years ago and, now that I am both the longest serving Head of a school in HMC and the longest serving Head in New Hall's history, I am often asked what has kept me here. It started with that first visit, in 2001, which blew me away. I remember meeting confident, characterful, good-humoured students, who made a lasting impression on me with their kindness and their evident pride in being part of the New Hall community. They spoke with passion about the work of the New Hall Voluntary Service (NHVS) as being central to School life. Their generosity of spirit and commitment to the care of those in need turned out to be a hallmark of a New Hall education. This is a place with a remarkable sense of community. At first, you will be attracted by the stunning

heritage site, but, above all, it is the people who keep you here. I would not want to move anywhere else. As a parent, I could not have asked for a better education than New Hall gave my four children. The staff team here work with remarkable commitment and care to ensure that our children have the 'best start in life'. This is the school that many of us, staff and parents, wish that we had attended. I am looking forward to the next 20-year development plan!

New Hall, from its foundation, has been pioneering and innovative. The School is the UK's oldest Catholic school that has always taken girls; a strong commitment to promote equality, and to address disadvantages in society for girls and women, still prevails. Our outreach and community work led us to be the first independent school to sponsor a state primary school academy. We were the first Catholic diamond model school and the first diamond model school to be created from a former girls' senior school, with senior boys joining from 2006. The School has invested in exceptional outdoor learning, using its 180-acre campuses.

The School is large and diverse: in age, from 1-19; in size, with 1,400 students and over 300 staff; in culture, with students from over 25 countries; in religion, as a Catholic school, welcoming all who support our ethos; in structure, offering the full range of flexible boarding options and a mix of co-education and single-sex teaching; and in educational range, with a broad curriculum and an exceptional co-curricular programme. Every day is full of opportunities to learn and grow, for staff as well as for students. It is impossible to be bored here - no two days are the same!

This is an exciting opportunity to be part of one of the UK's most successful schools, with an ambitious plan for further development. Where many independent schools are retracting and reducing investment, New Hall is bucking the trend and continuing to grow and to strengthen our provision. We are investing in our Sixth Form Centre, expanding our curriculum, growing our Sport provision (most recently, with the addition of riding, football and basketball) and enhancing our co-curriculum. We are open to opportunities to expand the work of our Trust, both in the UK and internationally, through our links with sister schools and Religious Communities. In particular, we are developing a link with the École Christ Ressuscité, Masaka, Rwanda, and with Heilig Graf Secundair, Turnhout, Belgium, which share the ethos of the Canonesses of the Holy Sepulchre. New Hall also works closely with the other Catholic independent schools in Brentwood Diocese.

I hope that you find the information contained in this pack, and on our website, helpful."



Mrs Jeffrey and Mr Fardell, with the resident Canonesses at New Hall, receive their long service awards, having given 68 years of service between them, to Catholic education. The awards were presented by Bishop Alan Williams SM at Brentwood Cathedral

Mission & Ethos Statement

New Hall, a Catholic boarding and day school, provides **the best start in life**, enabling students to meet confidently the challenges of the wider world.

Here **academic excellence** is achieved in surroundings where relationships are based on **care, trust and respect**.

We **welcome** students from many traditions, building a Christian **community**

Our Most Valuable Resource – Our Staff Team

New Hall benefits from a stable and committed staff body, with retention and length of service significantly exceeding sector averages for UK independent boarding schools. Across the independent sector, annual staff turnover is typically in the region of 16-18%, and average tenure is often around three to four years. By contrast, New Hall reported an annual turnover of 3% in the last 12 months, and an average staff tenure of five years.

At New Hall, over 17% of employees have more than 10 years' service, reflecting the strength of our collegiate culture, clear sense of mission, and commitment to professional development. Currently, two staff (one teacher, one support staff) have served for over 40 years, and 24 staff have served for over 20 years.

Staff are supported and encouraged in their career development, including through generous funding for courses, and flexible working/sabbaticals for study and training. In 2024-25, 30% of staff progressed, internally or externally, into new roles, promotional opportunities, or additional responsibilities. Since 2020, New Hall has trained 11 staff as teachers, through the school-based PCGE and ECT courses. The School welcomes apprentices and graduate entry applicants for a range of roles, to have a diverse workforce, combining experienced staff and new talent.



Staff celebrating working at New Hall for over 10 years in 2024

The Physical Education & Sport Department

Sport is a key part of life at New Hall. We provide first-class coaching and teaching across the age ranges and providing opportunities for all students to develop and to showcase their skills. We combine an inclusive 'sport for all' ethos, with an elite training programme. Together, these enable our students to excel at the highest level.

We offer a rich variety of sports across the week. The major sports at New Hall are Athletics, Cricket, Hockey, Netball, Rugby, Swimming and Tennis, with Equestrian, Basketball, Football, Golf and Skiing as minor sports. Each of the major and minor sports has a dedicated Head of Sport who is responsible for leading our coaching programme and arranging competitive fixtures for their individual sport. Through our co-curricular clubs and boarding activity programme, we also offer a wide selection of sports. There is a separate, large and thriving Dance Department.

The Physical Education & Sport Department is based within the pavilion overlooking the newly resurfaced tennis and netball courts. The School enjoys excellent facilities, many of which are floodlit: Learn-to-ride centre which includes 2 horse simulators and a menage, 8 netball courts, 2 all-weather hockey pitches, 2 outdoor basketball court, 5 rugby pitches and a 3G rugby/football training pitch, 7 football pitches, an athletics track, 4 cricket wickets and indoor & outdoor cricket nets, 25m 6-lane indoor pool, 10 tennis courts, sports hall and fitness suite. For golf we make use of Little Channels, which has a driving range and a 9 hole course. As well as first class facilities, the Department has a stellar team of sport coaches. This includes professional and international sportsmen and women: England Women's Masters Hockey International, Karen Cooper; England Cricket International, Ravi Bopara; Kenrick Liburd U23 GB basketball head coach



*Karen Cooper (Sport Coach)
receiving a gold medal in the
Women's Masters Hockey
World Cup in South Africa*



*Nasser Hussain and Ravi Bopara with members
of our Senior Girls' Cricket Squads*

We have an enviable record of success in both individual and team sports, and many of our students compete at county, regional and national levels. In the last year alone, New Hall students have represented Great Britain in Skiing, represented Scotland in Cricket, reached national finals in Swimming (including a Bronze medal win), won internationally-ranked Tennis tournaments, and were crowned national champions in Golf and in Hockey. Several of our recent alumni (New Hallians) have played regularly in the Rugby Premiership, including for Saracens, Worcester Warriors and Leicester Tigers and in the United Rugby Championship for Munster. Several of our rugby players have represented England at School Boy and U20 levels. A New Hallian athlete represented England in the Commonwealth Games in Heptathlon.

Netball

Netball is played in both the Preparatory and Senior Divisions, and we have been successful in the Independent Schools National Cup. Our students have gained places in County Academies and National Superleague Franchise Pathways for the 2022-2023 season, following several rounds of competitive trials. We have several students in Essex County Academy, U18 Saracens Mavericks Futures Hub, and London Pulse Hub across a number of age groups.



Our students enjoy outstanding training and facilities



Teamwork is a key element in our success

Athletics

We have high uptake in girls' and boys' Athletics track and field, Cross-Country and Running Clubs, and have achieved great success in district, county and regional competitions, as well as National Finals. In the Michaelmas Term 2022, we won the Eastern Cross-Country Championships, and our Junior Girls Cross-Country team came 2nd in the English Schools Athletics Association Finals.



Schools Biathlon 2023



Our Track Teams compete in county, regional and national competitions

Basketball

Basketball was introduced in September 2024, and the New Hall Basketball academy was also set up. With two outdoor basketball courts and an indoor sports hall which has one full indoor court, the growth we have seen in this sport has been impressive. We compete in the Junior NBA, play local tournaments and compete regularly against other schools.

Cricket

We have four cricket squares, outdoor and indoor nets, and strong uptake across boys' and girls' cricket in Senior and Preparatory Divisions. Across Years 5 and 6, for example, more than 40 students train each week. A number of our students play at county level and within the player pathways for Essex County Cricket. One of our Sixth Form students is a member of the Scotland Under 19 World Cup Qualifiers Squad.



New Hall Girls' Cricketers selected for Essex County Cricket Squads



1st XI Cricket Match at Six Acres in New Hall

Hockey

We have two floodlit all-weather hockey pitches and successful hockey teams in the Preparatory and Senior Divisions. In 2022, we secured impressive victories in the England Cup Competition, our U13 Girls A Team was crowned Essex Champions, and our U13 Boys A Team won the ISA U13 National Championship.



U13 Girls: Essex Champions 2022



U13 Boys: ISA National Champions 2022

Rugby

New Hall has an established reputation in Rugby, and we field up to 25 teams across the age range from Preparatory Division to Senior Divisions in contact rugby in the Michaelmas Term. There are opportunities for girls to learn to play rugby. We also offer inter-house non-contact rugby. In the Lent Term, we field six teams in Rugby Sevens and enter major tournaments, including the Rosslyn Park Sevens. Within our Rugby Programme, we have regular strength and conditioning sessions for our elite teams, and we use video analysis. A number of our students play rugby at county level, and several New Hallians have gone on to play professionally, for teams such as Saracens, Munster, Worcester Warriors and Leicester Tigers, and have represented England School Boy and England U20 level.



Our 1st XV benefits from expert training, as well as regular strength and conditioning sessions and video analysis

Swimming

New Hall Swim Academy is an affiliated club, and our students benefit from elite coaching from some of the country's finest swimmers, including recent Olympians and Commonwealth medallists. Our students achieve remarkable success in elite level competitions, most recently including ISA and East Regional Championships, and have competed in National Finals. In Michaelmas 2022, our Junior Boys freestyle relay team won the silver medal at the English Schools' National Competition. Our Swim Academy includes a number of swimmers who are among the finest in their age group nationally.



Members of New Hall Swim Academy



Swimmers in the School's indoor pool

Tennis

We have an established Tennis programme, and, among the many notable team and individual achievements, our students have won county titles and have represented England. In 2022, members of our New Hall Tennis Team won the Ladies Junior Doubles J3 Saint Cyprien in France, the Fred Perry Championship Finals U16 Boys competition, and the Woodford Wells Open Grade 3 U16 Ladies Singles. Our New School Tennis Team plays regular fixtures as well as the junior event 'Road to Wimbledon', and our senior players have reached Wimbledon qualifiers. In 2022, our Senior Girls' team was the runner-up at the National Schools' U18 Girls' Championships.



*Our students benefit from individual and team coaching in the Preparatory and Senior Divisions (above)
New Hall came 2nd at the National Schools' U18 Girls' Championships (right)*



Equestrian

New Hall School has a rich history in equestrian sports and, in 2022, our riders qualified for Nationals in the 80-85cm Show Jumping and competed in the National and Plate Championships at Keysoe, achieving 1st and 4th in Arena Eventing. The School has links with Chelmsford Equestrian Centre. New Hall has opened a Learn-to-Ride Centre on the New Hall site, and the plan is to open an Equestrian Centre at New Hall Park Farm (2.9 miles from New Hall). We have also recently added two state of the art Equestrian Simulators to our outstanding facilities. These will allow our elite riders to hone their skills, as well as helping beginners and those with disabilities to experience riding. New Hallians have represented Great Britain in a variety of disciplines, in particular Eventing.



In 2023, New Hall is opening a Learn-to-Ride Centre on the New Hall site, as well as an Equestrian Centre at New Hall Park



Our Equestrian Team represents the School in National Schools Equestrian Association (NSEA) competitions

Football

From September 2023, we introduced Football as a minor sport at New Hall. Our newly appointed Head of Football is responsible for leading a co-curricular based programme to introduce the sport across the School. We intend to extend this provision to introduce competitive fixtures and, following the success of the Lionesses in recent years, have a particular focus on inspiring girls to take up the sport. Across the School, a number of students play football at an elite level, with students currently in Academy systems at West Ham United, Arsenal FC and Ipswich Town, to name a few.

Golf

New Hall School has developed an outstanding reputation in golf, and now has more than 100 students training regularly. Our students have secured victories against some of the country's elite players at U16 and U18 level, and we regularly compete at major competitions such as the Independent Schools Golf Association, British Schools and HMC competitions, as well as the Alexander Quinn Invitational. We have a number of students playing at county level, as well as England Girls' Regional Squads and England Boys' U18 Squad. In 2023, members of our team will be competing at the Golf World Junior Championships.



Our students benefit from 12 on-site golf nets and launch monitor, and regular access to a local driving range and golf course



Members of our Golf team competing at the Independent Schools' Golf Association (ISGA) National Championships

Skiing

New Hall Skiing Team is among the most successful skiing teams in the country. Under the guidance of our Head of Skiing and coaches from an external ski company, we regularly train at Brentwood Dry Ski Slope and compete in the UK and internationally. Our team has achieved outstanding success, winning a great number of team and individual events at the ISA Indoor Championships, at British Interschools Championships, BSA Championships and the ESSKIA British Finals. Our students have been selected to represent Team GB; additionally, in 2023, two of our students will be competing at the highly prestigious World Schools Ski Championships in Turkey.



One of our New Hall skiers has been selected to represent Great Britain at the International Children's Races, 2023



Our students have been selected to compete at the World Schools Ski Championships

The Physical Education (PE) Curriculum

The Head of Physical Education (PE) leads a team of teachers who are focussed on the delivery of our Academic PE (GCSE and A Level) curriculum. This team of specialist teachers are driven to achieve the highest standards of Learning & Teaching and help to inspire students to embrace Physical Education as an academic pursuit, as well as enjoying their chosen sports.

The core PE Curriculum begins in Years 3-9, where students complete a rotation of activities including: Health Related Fitness, Swimming, Athletics, Gymnastics, Dance, net and wall games (these include Tennis, Badminton, Handball and Volleyball), striking and fielding games (these include Cricket, Rounders and Softball) and invasion games (these include Basketball, Football, Olympic Handball and Dodgeball). The emphasis is on learning the fundamental skills and tactics in each area, whilst students are taught definitions, keywords and concepts that are developed in more detail in the GCSE course.

In Years 10 & 11, students can choose to take GCSE Physical Education. We currently follow the OCR 9-1 specification and have a strong uptake from both girls and boys, with typically at least 3 sets in each year group. Classes have a dedicated teacher and are taught within our new PE Classroom suite. These state-of-the-art classrooms are located directly next to our main Sport facilities, and this allows teachers to blend practical activities with classroom study.

At A Level, we also follow the OCR specification, and a large number of our students go on to study Sport Science, or related subject areas, at university. We have also recently introduced the BTEC Sport course which has been very popular.

Academic Achievements

The Department has a track record of achieving excellent results at both GCSE and A Level. In a typical year, around half of our A Level PE students achieve A*/A grades, with 100% at A*-C. At GCSE, around a quarter of students achieve 8+ (A*), with around a half reaching grade 7+ (A*/A). All students typically achieve 4+ (A*-C).

Role Profile – Lifeguard, Sports Facilities

We are seeking a reliable and enthusiastic Sports Facilities **Lifeguard** to join our team. Reporting to the Sport Facilities Manager, you will play a key role in ensuring the safety, cleanliness and smooth day-to-day operation of our swimming pool and wider sports facilities.

This is an excellent opportunity to be part of a busy and supportive sports team in a well-equipped environment.

You will work in line with School policies and Swim England and Royal Life Saving Society (RLSS) regulations, following the Pool Safety Operating Procedures (PSOP), Normal Operating Procedures (NOP) and Emergency Action Plan (EAP). Regular monthly training is required to maintain your lifeguard qualification.

Key responsibilities:

- to carry out lifeguarding duties in accordance with RLSS UK standards
- to providing first aid when required
- to maintain high standards of cleanliness and hygiene in pool areas
- to undertake reception duties, including customer service and answering telephone enquiries
- to get involved in setting up and clearing sports equipment across facilities at all New Hall sites
- to maintain high standards of safety and cleanliness across all sports facilities
- to support the operation of sports activities and external facility lettings
- to assist with the Fitness Suite, including inductions (if qualified) and supervision
- to carry out daily health and safety checks, water testing and reporting issues
- to support site security and reporting maintenance or repair needs
- to assist the Sport Facilities Manager and Health & Safety Officer to ensure that all areas of the swimming pool, Fitness Suite and all other Sport facilities comply with Health & Safety regulations
- to check the pool plant operations and report any issues to the Sports Facilities Manager

Person Specification:

Essential:

- to hold Current RLSS UK National Pool Lifeguard Qualification (or equivalent)
- to have strong awareness of health and safety in a pool environment
- to have good communication and customer service skills
- to be willing to undertake regular training
- to have a flexible approach to working hours, including evenings and weekends

Desirable:

- to hold a Level 2 Swimming Teacher qualification or willingness to train
- to have experience in a leisure, sports or school environment
- to have knowledge of pool plant operations or fitness suite supervision

Application Process

For further details regarding New Hall School, or an opportunity to discuss the role, please contact Martin Swanwick at m.swanwick@newhallschool.co.uk or telephone: 01245 467 588.

Instagram: @newhallschool

The process is as follows:

1. Applications should be made electronically via the School's website
<https://www.newhallschool.co.uk/about/job-opportunities/>
2. Applications will be considered until midday, Wednesday 25 February 2026
3. Interviews will take place: week commencing Wednesday 25 February 2026

The successful candidate may take up the role from March 2026 onwards, depending on notice and completion of pre-employment checks. Please note: to comply with KCSIE and Safer Recruitment policies, applications via CV are not accepted.

Culture, Values and Professional Conduct

What We Expect from All Staff

1 Catholic Life

- 1.1 to support and to contribute to the Catholic ethos of the School, as outlined in the Mission & Ethos Statement and Aims of the School
- 1.2 to facilitate class prayer and year group Masses and to encourage the singing of hymns in assemblies
- 1.3 to be aware of and contribute to the School Development Plan and to promote the strategic aims of the School

2 Staff

- 2.1 to foster good working relationships based on care, trust and respect
- 2.2 to take responsibility for the management of other adults in the classroom

3 Safeguarding

- 3.1 all staff are responsible for promoting and safeguarding the welfare of students at New Hall School by ensuring compliance with the School's Safeguarding & Child Protection Policy and Procedures at all times. It is a requirement of all staff to report any actual or potential risks to the safety or welfare of students to the Designated Safeguarding Lead

4 Pastoral

- 4.1 to foster each child's wellbeing and establish relationships which are based on mutual care, trust and respect
- 4.2 to promote positive home/School links through daily interactions with parents and carers, and the use of the Tapestry online learning platform to organise, supervise and accompany Nursery trips

5 Communication

- 5.1 to communicate effectively with prospective and current parents and to promote good relationships with parents

6 Community Outreach

- 6.1 to support our sponsored primary school, Messing Primary School, and Catholic independent schools in Brentwood Diocese, by sharing joint INSET
- 6.2 sharing good practice and resources
- 6.3 to support New Hall Voluntary Service (NHVS) and other charitable work of the School
- 6.4 to support New Hall Parent Association (NHPA) events
- 6.5 to strengthen the School's reputation and profile as a leading School of its type

7 Finance & Sustainability

- 7.1 to seek to ensure value for money
- 7.2 to consider sustainability and to minimise waste
- 7.3 to contribute ideas for cost saving initiatives

Salary & Benefits

Salary

New Hall School has its own salary scale. The salary for this role is £26,208pa (S1).

Pension

Support staff are automatically enrolled in the designated stakeholder pension scheme provided by Standard Life, subject to meeting the qualifying conditions. Pension contribution rates are 5% for employees and New Hall currently matches employee contributions up to 4%.

Hours of Work

We expect that working hours will work out at an average of 40 hours per week over the course of a calendar year. You are entitled to take a one-hour unpaid break each day. An enhanced salary range and benefits package have been included to allow for times when the working hours are increased. Since this is paid in advance, no further remuneration will be paid. A degree of flexibility is required, given the nature of New Hall as a boarding school. The Lifeguard is required to work evening and weekend shifts on a rota. All staff are required to attend INSET (staff training) days

Holidays

The Lifeguard will be entitled to 35 days' holiday per year, including bank holidays. All holiday is subject to line manager approval. New Hall closes between Christmas and New Year and for bank holidays; staff must set aside annual holiday entitlement to allow for these closures. All holiday is subject to line manager approval.

Staff Benefits & Staff Wellbeing

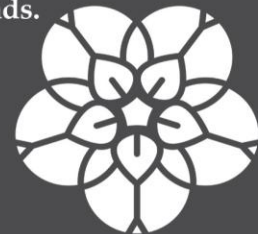
Technology

New Hall is committed to promoting the digital literacy of our students. Staff are provided with a School laptop and an iPad.



Campus

Staff can explore the School's extensive outdoor learning areas across our 180-acre heritage grounds.



Library

Staff can make use of the School's well-stocked libraries to support professional development and personal interests.



Freshly Prepared Meals

At New Hall, staff can enjoy a delicious, freshly prepared 3-course meal every day during term time - free of charge. It is a great way to take a break, refuel, and catch up with colleagues, all while enjoying the same high-quality meals that make our dining experience so special.



Leadership Pathways

New Hall's investment in staff is shown by the significant number of internal promotions: 79 current staff (27%) have had at least one internal promotion, with 39 of these staff being promoted more than once and 16 staff being promoted more than twice.

The School has a record number of staff who have gone on to Headship/Deputy Headship (15 in recent years).



Health & Wellbeing

At New Hall, staff wellbeing is important to us. Staff have access to a free annual medical check at our Health & Wellbeing Centre, book convenient on-site appointments with our School Nurses, have access to flu vaccinations at a subsidised cost, and have access to 24/7 counselling support.

School bikes are also available for staff to get around site in a fun and eco-friendly way.

Continuing Professional Development

The School has a generous CPD budget, which is exceptional in including full or part funding for degrees, diplomas, MA/MPhil qualifications, PGCEs, DELF/DELE modern languages courses, finance qualifications (CIPP, CIMA, ACCA, AAT), HR qualifications (CIPD), music lessons and even driving lessons!

The School runs apprenticeship schemes (Early Years, Chaplaincy, horticulture). New Hall has taken a lead in training teachers, investing £250k in training teachers over a 5-year period.



Staff Socials



Every Friday after work during term time, staff are welcome to unwind in the Denford Bar - a great spot to relax and socialise with colleagues at the end of the week.



Transport

An electric vehicle fleet is available to staff for business use and staff have complimentary access to the School's bus network.

Long Service Awards



New Hall has annual long service awards, in 5-yearly intervals from 10 years, for the many staff who reach milestones of 10+ to 40+ years. Currently, 57 members of staff have given service here for 10 years or more.

Parking

Complimentary on-site parking is available for all staff.



Sport Facilities

Staff and their immediate family are able to make use of New Hall's outstanding sport facilities. This includes use of our 25-metre, 6-lane indoor swimming pool, 10 floodlit tennis & netball courts, 2 outdoor basketball courts, Fitness Suite, which comprises a range of cardiovascular equipment and free weights, and the School's Athletics track.



Activities & Clubs

Staff can enjoy clubs designed just for them - from the staff choir to ballet and language lessons - offering a great chance to learn something new, stay active, and connect with colleagues. And if you have a passion that you want to share, there is always the opportunity to set up your own club, making our community as diverse and dynamic as the people within it.

Community

Many staff recommend roles at New Hall to friends and family, and several couples have met and married at New Hall!

Recently, three generations of one family worked at New Hall, as support staff. The School employs a high number of Old Fishes (alumni), with typically 8-12 on the staff each year. Several former staff have become Governors of the School, Directors of New Hall's Multi Academy Trust or volunteers with the New Hall Voluntary Service (NHVS).



Tea & Coffee Provision

Staff enjoy complimentary tea and coffee throughout the day in dedicated staff rooms.



Staff Benefits & Staff Wellbeing (continued)

Enhanced Holidays

Enjoy additional days of holiday, the ability to take holiday in term time, and the Christmas to New Year School closure, that ensures an extended break for all at this time for family and friends.

Vocations & Faith Development



Nursery

New Hall runs an on-site Nursery for 90 children aged 1-4. Staff children have priority for places, which may be part time or full time. Staff have the option of a term-time only place, which reduces the annual cost.



Staff have access to our beautiful Chapel and prayer spaces, and vibrant Chaplaincy. Staff may volunteer with the New Hall Voluntary Service (NHVS) or support our sister community in Rwanda, with opportunities for voluntary work overseas. Funding is provided for courses (eg the CCRS, A Level RS, organ lessons, an MA in Theology/ministry/Catholic leadership).

Staff may join groups for faith development, training in ministries and liturgical music. There are daily opportunities for collective worship: Adoration, morning and evening prayer and Mass. The Careers & Vocations Department and Chaplaincy support staff in discernment of their vocation.

Connectivity

Beaulieu Park railway station is at the entrance to New Hall's Avenue: 30 minutes to Stratford and 38 minutes to London Liverpool Street. The Elizabeth Line at Shenfield (13 minutes by train) terminates at Heathrow airport. There are nearby airports: London Stansted, London Southend and London City.



Events

From equestrian displays, inspiring art exhibitions and music concerts, to thrilling sporting fixtures, dance performances, and theatrical productions, there is always something for staff to enjoy. Our exceptional facilities provide the perfect setting for these occasions, fostering a strong sense of community spirit and pride.

Staff are warmly encouraged to attend and take part in the many events throughout the year - whether supporting students, collaborating in creative projects, or simply enjoying the lively atmosphere that makes New Hall School such a special place to work.

Location

Enjoy the best of both worlds: countryside and city. New Hall has a London commuter station (Beaulieu Park) at its front gate, and benefits from the vibrant and growing facilities of the Cathedral city of Chelmsford. Facilities abound in the city centre and nearby: sports centre and ice rink; farmers markets; shopping centres and retail parks; museum; bars and restaurants; park with weekly Park Run; activity/recreational facilities for parties and socials; centres for equestrian, canoeing and paddleboarding. Within a 25 minutes drive is a dry ski centre. A short drive takes you to the extensive Essex coast and Mersea Island.



About New Hall School

New Hall School is a thriving co-educational boarding and day school for 1,400 students aged 1-19. Founded in 1642, it is one of the oldest Catholic schools and the largest Catholic boarding & day school in the UK. The School's ethos continues to be inspired by its founding Religious Community, the Canonesses of the Holy Sepulchre.

*"True community is where people listen to each other;
where the marginalised and excluded are included".*
(Canonesses of the Holy Sepulchre, 2023)

The charism of our founding Religious Community is service and hospitality; this is lived out in the actions of the volunteers that take part in this thriving and popular programme. Founded in 1978, the New Hall Voluntary Service (NHVS) has been providing help and support to vulnerable members of our local community for over 45 years. Volunteering for NHVS promotes an enduring community spirit, nurtures responsible citizenship and encourages student-led charitable endeavour throughout the local area.

New Hall is a warm, welcoming, and supportive community, with a staff of around 300. Staff enjoy an exceptional working environment. The main campus occupies the stunning Grade I listed former Tudor palace of Beaulieu, and is surrounded by 75 acres of beautiful parkland and heritage gardens. The School's conference and events venue is at the Grade I listed Boreham House, with 35 acres of grounds, one mile away. The School also owns New Hall Park Farm, a 70-acre site with an equestrian centre, 3-miles from New Hall.

Beaulieu Park railway station is at the entrance to New Hall's Avenue: 30 minutes to Stratford and 38 minutes to London Liverpool Street. The Elizabeth Line at Shenfield (13 minutes by train) terminates at Heathrow airport. There are nearby airports: London Stansted, London Southend and London City.

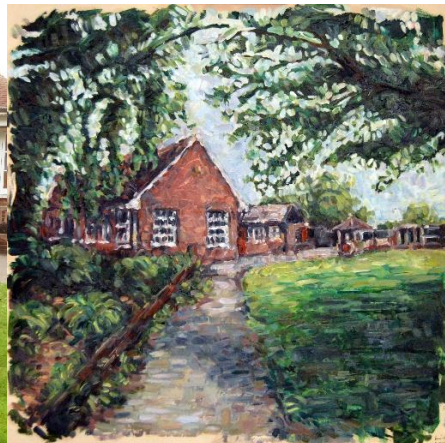
Chelmsford is a dynamic and welcoming city, with a population of around 190,000. Recognised as the *Sunday Times*' 'Best Place to Live in the East' in 2025 and 2018, and listed among the top ten best places in the East of England in 2019, it offers an exceptional quality of life. The city's rich history, vibrant cultural scene, and strong sense of community make it an attractive place to live and work.

An extraordinary school with a distinctive character and close-knit community, New Hall is popular with local, national and international families. The School is oversubscribed at key entry points. An early adopter of the diamond model, it offers a vibrant education for girls and boys, with single-sex teaching in the Senior Divisions for Years 7 to 11, and co-education in the early years, Preparatory Divisions and Sixth Form.

New Hall prides itself on the quality of teaching and learning. Seeking the highest possible levels of academic attainment is a priority. The School is equally proud to offer a rounded education, focused on developing the whole child. There is a strong emphasis on co-curricular enrichment – as recognised in its recent ISI Inspection reports. The School excels in sport, having recently been awarded Outstanding Sport in a Large School by the Independent Schools Association (ISA). Alongside traditional sports, it is home to the largest independent school ski team, benefits from a professional cricket coach, and is proud to include elite national golfers within its student body. With a well-established on-site farm, woodland school, and equestrian centre, the School makes the most of its unrivalled space to embed the many benefits of outdoor education into the curriculum for all age groups.

The School has made extensive capital investments across its estate over the past 20 years. Recent developments include: a purpose-built Nursery, a Sixth Form International Business & Languages Centre, a canopied outdoor performance space, a Chaplaincy suite, outdoor basketball courts, and a second Cookery room.

In 2012, the School established the New Hall Multi Academy Trust (NHMAT) and became sponsor of nearby Messing Primary School – an Ofsted-rated ‘Good’ school. It is now looking ahead to new ventures and exciting opportunities to further grow its partnership work.



Painted by New Hall Alumni, Liam Merrigan

Inspection outcomes and accolades for New Hall School and its staff:

2025	Diocese of Brentwood	Catholic Schools Inspectorate	Outstanding
2025	Independent School Association Awards (ISA)	ISA Senior School of the Year Awards	Finalist
2025	Muddy's Best Schools Awards	Championing Sustainability	Highly Commended
2025	Muddy's Best Schools Awards	Passionate About Sport (Prep)	Highly Commended
2024	Independent School Association Awards (ISA)	Outstanding Engagement in the Community	Finalist
2024	Independent Schools of the Year Awards	International student experience	Finalist
2024	Muddy Stilettos	Best Schools Awards for Best Experiential Learning (Modern Languages learning through Cookery)	Winner
2024	Independent Schools Inspectorate (ISI)	School Inspection	All standards met and NHVS a 'Significant Strength'
2024	The Boarding Schools' Association (BSA)	Best Community Work	Finalist
2024	England Netball	Netball Teacher of the Year Award	Finalist
2023	Independent School Association Awards (ISA)	Outstanding Sport in a large school	Highly Commended
2019	Brentwood Diocese	Citizenship Award	Awarded
2023	Starz UK	Most Outstanding Dance School	Winner
2023	Trinity	Champion Centre	
2023	Independent Schools of the Year Awards	Independent Prep School of the Year	Finalist
2022	The School Games Mark	School Games Mark Award	Platinum
2022	Independent Schools of the Year Awards	Innovation Award for an Outstanding new initiative	Finalist
2020	Lawn Tennis Association	Education Venue of the Year award for Essex	Finalist
2019	Independent Schools Inspectorate (ISI)	Regulatory Compliance Inspection	All standards met
2019	Ofsted	EYFS Inspection	All standards met
2019	Independent Schools Inspectorate (ISI)	Material Change Inspection (increase of student roll to 1,500 and inclusion of age range 1-3 years)	All standards met
2019	National Westminster Bank	Project Respond competition – National Award	Winner
2019	Investing in Volunteers Award		Awarded

2019	Brentwood Diocese	Citizenship Award	Awarded
2018	Essex Digital Awards	School, Education or Charity Website	Finalist
2018	Essex Digital Awards	Overall Website of the Year	Silver
2018	Diocese of Brentwood	Denominational Inspection	Outstanding
2017	Volunteer Essex	Voluntary Community Service Award in the 'Who Will Care? Awards 2017	Commendation
2017	Nationwide	Award for Voluntary Endeavour	Winner
2016	TES Independent School Awards	Independent School of the Year	Winner
2016	TES Independent School Awards	Governing Body of the Year	Finalist
2016	TES Independent School Awards	Senior Leadership Team of the Year	Finalist
2016	TES Independent School Awards	Financial/Commercial Initiative of the Year	Winner
2016	Independent Schools Inspectorate (ISI)	Educational Quality Inspection	Excellent (highest category)
2016	Independent Schools Inspectorate (ISI)	Focused Compliance Inspection for schools with residential provision	All standards met
2015	TES School Awards	Headteacher of the Year	Finalist
2015	Institute of Groundsmen	Groundsman of the Year	Finalist
2014	Essex Digital Awards	School, Education or Charity Website	Gold
2014	Independent Schools Inspectorate (ISI)	Boarding inspection	Outstanding
2013	Essex Business Awards	Best Growing Business - Large Company	Winner
2013	Essex Business Awards	Excellence in Marketing - Large Company	Winner
2013	Essex Business Awards	Essex Business of the Year	Winner
2013	Essex Business Awards	Community Award - Business Sector	Winner
2013	Pearson Teaching Awards	Pearson Teaching Awards (History)	Longlisted
2013	Pearson Teaching Awards	Pearson Teaching Awards (Physics)	Winner - Teacher of the Year
2013	Pearson Teaching Awards	Pearson Teaching Awards (Biology)	Longlisted
2011	TES Independent School Awards	Outstanding Strategic Initiative	Winner
2005	Institute of Directors' Awards	Institute of Directors' East of England Businesswoman of the Year Award	Winner
2000	Chelmsford Borough Council	The Millennium Award for Helping Young People to Fulfil their Potential	Finalist
1996	Whitbread & Make a Difference Volunteering Awards	Outstanding service to the community	Winner



hr@newhallschool.co.uk | | 01245 467 588
 New Hall School, The Avenue, Chelmsford, Essex CM3 3HS