



PIONEER LEARNING TRUST

Pursuing Excellence and Equity

SAFEGUARDING AND CHILD PROTECTION POLICY

Date: September 2025

Review Date: September 2026

Contents

1. Ethos and Overview
2. Roles and Responsibilities
3. Aims
4. Legislation and statutory guidance
5. Definitions
6. Equality statement
7. Roles and responsibilities
8. Confidentiality
9. Recognising abuse and taking action
10. Notifying parents/carers
11. Pupils with SEND
12. Pupils with a social worker
13. Looked-after and previously looked-after children
14. EYFS
15. Mobile phones and cameras
16. Complaints and concerns about school safeguarding policies
17. Record Keeping
18. Training
19. Monitoring Arrangements
20. Links with other policies

Appendices based on the DfE statutory guidance, Keeping Children Safe in Education

Appendix 1: Types of Abuse

Appendix 2: Safer Recruitment and DBS Checks, Policy and Procedures

Appendix 3: Allegations of Abuse made against Staff

Appendix 4: Specific Safeguarding Issues

The Pioneer Learning Trust is committed to providing a safe and secure environment for pupils, staff and visitors and to promoting a climate where children and adults will feel confident about sharing any concerns that they may have about their own safety and that of others. Pioneer Learning Trust fully recognises its responsibilities for safeguarding children and child protection is of paramount importance.

1. Our Ethos

Our schools promote an ethos where our pupils feel secure, are encouraged to talk and are listened to and can be confident that someone will listen. We want children at our schools to feel able to talk freely to any member of staff or regular visitor (defined as adults who visit the school on a regular basis representing another organisation but working in partnership with the school, this might include a community, voluntary or statutory organisation) if they are worried or concerned about something. All staff and volunteers will, through induction and training, know how to recognise concerns about a child and know how to manage a disclosure made by a child. We will not make promises to a child we cannot keep, and we will not keep secrets. Every child will be told, by the adult they have chosen to talk to, what happens next.

2. Roles and Responsibilities

All staff; volunteers and visitors have a responsibility to take immediate action if they are concerned about the

immediately. **All concerns about the safety and welfare of a child must be taken seriously.**

All staff; volunteers and visitors should:

- Record the concern using the school's safeguarding children recording system
- Follow the guidance in Appendix Two of this document
- Speak to the school's Designated Senior member of staff for Child Protection or the person who acts in their absence
- Agree with this person what action should be taken, by whom and when it will be reviewed

| Key Roles in Schools | Designated Safeguarding Lead/s | Deputy Designated Safeguarding Lead/s | Chair of Governors | Governor Responsible for Safeguarding | Designated Teacher for Looked After Children |
|--------------------------------|---|--|--------------------|---------------------------------------|--|
| Chantry Primary Academy | Miss Noshin Hussain Mrs Natalie Gill | Mrs Jenni Lloyd Mrs Coralie Boriak Mrs Hannah Page Mrs Coby Hitchcock | Mr Umar Faruk | Mrs Erin Stewart | Mrs Coralie Boriak |
| Ferrars Junior School | Mr Kevin Rae | Mrs Alison McDade Miss Shali White | Mr Tim Claridge | Miss Lisa Gorton | Mrs Alison McDade |
| Lakeview School | Mrs Lisa Phee | Mrs Hannah Francis Mrs Zoe Stapley Mrs Joanne Shillington | | | |
| Southfield | Mrs Sarah | Mrs Nichola | Mr Mark | Mr Mark | Mrs Nichola |

| | | | | | |
|-----------------------------------|-----------------|---|------------------|------------------|---------------------|
| Primary Academy | Baldwin | Comben Mr Adrian Bee Mrs Dawn Hubbard | Sherwin-Peddie | Sherwin-Peddie | Comben |
| Warden Hill Infant Academy | Mrs Lisa Maxted | Mrs Michelle Nelis Mrs Yotunda Otunla Mrs K Richards | Mrs Trish Pinner | Mrs Trish Pinner | Miss Yotunda Otunla |
| Whitefield Primary Academy | Mrs Jan Kirby | Mrs Amy Moye Miss Rachel Owen Mrs Lauren Adams Miss Sara Halliwell | Mrs Carol Smart | Mrs Carol Smart | Mrs Lauren Adams |

Luton

| | |
|--|----------------------|
| Early Help Assessment Team (EHA) | 01582 548231 |
| Multi-Agency Safeguarding Hub (MASH) | 01582 547653 |
| Emergency Duty Team | 0300 300 8123 |
| Local Authority Designated Officer (LADO) | 01582 548069 |
| NSPCC | 0800 800 5000 |
| Police | 111/999 |

Bedford

| | |
|--|----------------------|
| The Integrated Front Door (IFD) | 01234 718700 |
| Emergency Duty Team | 0300 300 8123 |
| Local Authority Designated Officer (LADO) | 01234 276 693 |
| NSPCC | 0800 800 5000 |
| Police | 111/999 |

3. Aims

We aim to ensure that:

- Appropriate action is taken in a timely manner to safeguard and promote children's welfare
- All staff are aware of their statutory responsibilities with respect to safeguarding
- Staff are properly trained in recognising and reporting safeguarding issues

This policy covers all the children in our school, including children in the EYFS.

4. Legislation and statutory guidance

This policy is based on the Department for Education's statutory guidance [Keeping Children Safe in Education 2025](#) and [Working Together to Safeguard Children 2023](#), and the [Governance Handbook](#). Our policy is designed to cover all children in school including our EYFS settings. It meets the requirements set out in the [EYFS framework](#), including those relating to safeguarding procedures (set out in paragraph 3.4 of the framework). We comply with this guidance and the arrangements agreed and published by local

safeguarding partners. This policy is also based on the following legislation:

Part 3 of the schedule to the [Education \(Independent School Standards\) Regulations 2014](#), which places a duty on academies to safeguard and promote the welfare of pupils at the school

[The Children Act 1989](#) (and [2004 amendment](#)), which provides a framework for the care and protection of children

Section 5B(11) of the Female Genital Mutilation Act 2003, as inserted by section 74 of the [Serious Crime Act 2015](#), which places a statutory duty on teachers to report to the police where they discover that female genital mutilation (FGM) appears to have been carried out on a girl under 18. [Statutory guidance on FGM](#), which sets out responsibilities with regards to safeguarding and supporting girls affected by FGM.

[The Rehabilitation of Offenders Act 1974](#), which outlines when people with criminal convictions can work with children Schedule 4 of the [Safeguarding Vulnerable Groups Act 2006](#), which defines what 'regulated activity' is in relation to children.

[Statutory guidance on the Prevent duty](#), which explains schools' duties under the Counter-Terrorism and Security Act 2015 with respect to protecting people from the risk of radicalisation and extremism

The [Childcare \(Disqualification\) and Childcare \(Early Years Provision Free of Charge\) \(Extended Entitlement\) \(Amendment\) Regulations 2018](#) (referred to in this policy as the '2018 Childcare Disqualification Regulations') and [Childcare Act 2006](#), which set out who is disqualified from working with children.

This policy also meets requirements relating to safeguarding and welfare in the [statutory framework for the Early Years Foundation Stage](#).

As an academy, this policy also complies with our funding agreement and articles of association.

Our locally agreed multi-agency procedures can be found at [Multi Agency Safeguarding Arrangements](#) (MASAs) and for Bedford Borough Safeguarding Children Partnership ([BBSCP](#)). The MASA sets out the arrangements for safeguarding partners to work together with other agencies to identify and respond to the needs of children in Luton Borough. The safeguarding partners have equal and joint responsibility for local safeguarding arrangements.

5. Definitions

Safeguarding and promoting the welfare of children means:

- Providing help and support to meet the needs of children as soon as problems emerge
- Protecting children from maltreatment, whether that is within or outside the home, including online
- Preventing the impairment of children's mental and physical health development
- Ensuring that children grow up in circumstances consistent with the provision of safe and effective care
- Taking action to enable all children to have the best outcomes

Child protection is part of this definition and refers to activities undertaken to prevent children suffering, or being likely to suffer, significant harm.

Abuse is a form of maltreatment of a child and may involve inflicting harm or failing to act to prevent harm. Appendix 1 explains the different types of abuse.

Neglect is a form of abuse and is the persistent failure to meet a child's basic physical and/or psychological needs, likely to result in the serious impairment of the child's health or development. Appendix 1 defines neglect in more detail.

Sexting (also known as youth produced sexual imagery) is the sharing of sexual imagery (photos or videos) by children

Children include everyone under the age of 18.

The following three **safeguarding partners** are identified in Keeping Children Safe in Education (and defined in the Children Act 2004, as amended by chapter 2 of the Children and Social Work Act 2017). They will make arrangements to work together to safeguard and promote the welfare of local children, including identifying and responding to their needs:

- The Local Authority (LA)
- A clinical commissioning group for an area within the LA
- The Chief Officer of Police for a police area in the LA

6. Equality Statement

Some children have an increased risk of abuse and additional barriers can exist for some children with respect to recognising or disclosing it. We are committed to anti-discriminatory practice and recognise children's diverse circumstances. We ensure that all children have the same protection, regardless of any barriers they may face. We give special consideration to children who:

- Have special educational needs or disabilities (SEND); also see section 11
- Are Young Carers
- May experience discrimination due to their race ethnicity, religion, gender identification or sexuality
- Have English as an additional language
- Are known to be living in difficult situations for example, temporary accommodation or where there are such issues as substance abuse or domestic violence
- Are at risk of FGM, sexual exploitation, forced marriage or radicalisation
- Are asylum seekers
- Are looked after or previously looked after, also see section 13

7. Roles and Responsibilities

Safeguarding and child protection is everyone's responsibility. This policy applies to all staff, volunteers and governors in the school and is consistent with the procedures of the three safeguarding partners. Our policy and procedures also apply to EYFS, extended school and off-site activities.

As a Trust, our schools have signed up to the charity organisation **Operation Encompass**. This service, which is being implemented by Luton Borough Council, means that if a parent/carer is involved in an incident at their home, they will be aware that the school will be informed. This information is shared with us purely to enable us to support their child should they need it. Operation Encompass enables effective interventions to many thousands of children who've experienced domestic abuse. More information can be found here [Operation Encompass Luton](#) and [Operation Encompass Bedford](#).

7.1 All Staff

All Trust staff will read and understand Part 1 and Annex A of the Department for Education's Statutory Safeguarding guidance and review this guidance annually.

All staff will be aware of:

- Our systems which support safeguarding, including this child protection and safeguarding policy, the CPOMS system, the staff handbook, the role and identity of the designated safeguarding lead (DSL) and deputies, the behaviour policy, and the safeguarding response to children who go missing from education
- The early help process and their role in it, including identifying emerging problems, liaising with the DSL, and sharing information with other professionals to support early identification and assessment
- The process for making referrals to Local Authority children's social care and for statutory assessments that may follow a referral, including the role they might be expected to play
- What to do if they identify a safeguarding issue or a child tells them they are being abused or neglected, including specific issues such as FGM, and how to maintain an appropriate level of confidentiality while liaising with relevant professionals
- The signs of different types of abuse and neglect, as well as specific safeguarding issues, such as child sexual exploitation (CSE), indicators of being at risk from or involved with serious violent crime, FGM and radicalisation

Section 17 and Appendix 4 of this policy outline in more detail how staff are supported to do this.

7.2 The Designated Safeguarding Lead (DSL)

Each school has identified a DSL, ultimately, this responsibility lies with the Headteacher, who takes lead responsibility for child protection and wider safeguarding. In some schools a second DSL is identified to take the operational lead for Safeguarding in school. The DSL will be available for staff to discuss any safeguarding concerns, in person, via email or phone. When the DSL is absent, the deputies will act as cover.

The DSL and deputies will be given the time, training, resources and support to:

- Provide advice and support to other staff on child welfare and child protection matters
- Take part in strategy discussions and inter-agency meetings and/or support other staff to do so
- Contribute to the assessment of children
- Refer suspected cases, as appropriate, to the relevant authorities, e.g. Channel programme, Disclosure and Barring Service, and/or police), and support staff who make such referrals directly
- Liaise with Local Authority case managers and designated officers for child protection concerns as appropriate

7.3 The Role of the Local Governing Body and Trustees

Both Trustees and Local Governing Bodies will approve this policy at each review, ensure it complies with the law and hold the headteacher to account for its implementation.

Each governing body will appoint a governor to monitor the effectiveness of this policy in conjunction with the full governing board. This is a different person from the DSL.

In schools, the Chair of Governors will act as 'case manager' in the event that an allegation of abuse is made against the headteacher, where appropriate (see Appendix 3).

All governors will read Keeping Children Safe in Education. Governing boards are also offered training in their

safeguarding responsibilities.

Section 19 of this policy has information on how governors are supported to fulfil their role.

7.4 The Headteacher

The headteacher is responsible for the implementation of this policy, including:

- Ensuring that staff and volunteers are informed of our systems which support safeguarding, including this policy, as part of their induction
- Communicating this policy to parents when their child joins the school via the school website
- Ensuring that the DSL/deputies have appropriate time, funding, training and resources, and that there is always adequate cover if the DSL is absent
- Ensuring that all staff undertake appropriate safeguarding and child protection training and update this regularly
- Acting as the 'case manager' in the event of an allegation of abuse being made against another member of staff or volunteer (see Appendix 3)
- Ensuring the relevant staffing ratios are met, where applicable
- Making sure each child in the Early Years Foundation Stage is assigned a key person

8. Confidentiality

Please refer to our Acceptable User policies with respect to the process and principles for sharing information. With specific respect to sharing safeguarding information within school, with the three safeguarding partners and other agencies as required, we will be mindful of the following:

- Timely information sharing is essential to effective safeguarding
- Fears about sharing information must not be allowed to stand in the way of the need to promote welfare, and protect the safety of children
- The Data Protection Act (DPA) 2018 and GDPR do not prevent, or limit, the sharing of information for the purposes of keeping children safe
- If staff need to share 'special category personal data' the DPA 2018 contains 'safeguarding of children and individuals at risk' as a processing condition that allows practitioners to share information without consent if it is not possible to gain consent, it cannot be reasonably expected that a practitioner gains consent, or if to gain consent would place a child at risk
- Staff should never promise a child that they will not tell anyone about a report of abuse, as this may not be in the child's best interests
- The government's [information sharing advice for safeguarding practitioners](#) includes 7 'golden rules' for sharing information, and will support staff who have to make decisions about sharing information
- If staff are in any doubt about sharing information, they should speak to the designated safeguarding lead or deputy

Confidentiality is also addressed in this policy with respect to record-keeping in section 17, and allegations of abuse against staff in Appendix 3

9. Recognising Abuse and Taking Action

Staff, volunteers and governors must follow the procedures set out below in the event of a safeguarding issue.

9.1 If a Child is Suffering or Likely to Suffer Harm, or in Immediate Danger

- Make a referral to children's social care and/or the police **immediately** if you believe a child is suffering or likely to suffer from harm, or is in immediate danger. **Anyone can make a referral.**
- Tell the DSL or deputy as soon as possible if you make a referral directly.
- Use the following link to the GOV.UK webpage for reporting child abuse to your local council:
<https://www.gov.uk/report-child-abuse-to-local-council>

Our local procedures for making a referral, as per the arrangements put in place by the three safeguarding partners are as follows:

For Luton: telephone MASH 01582 547653, Out of hours: 0300 300 8123, E-mail MASH@luton.gov.uk

For Bedford: you can report a concern on the [Integrated Front Door](#) (IFD) by calling 01234 718700 during office hours or 0300 300 8123 for out-of-hours emergencies, E-mail IFDinformation@bedford.gov.uk

In an emergency, phone the police on 999.

You can also contact MASH using the online referral form which can be found here [MASH online referral link](#). This form is for professionals to refer any issue relating to the safeguarding of children and young people.

[Early help assessments](#) should still be completed using the Early Help Assessment Form.

9.2 If a Child Makes a Disclosure to a Member of Staff

If a child discloses a safeguarding issue to a member of staff they should:

- Listen to them and believe them. Allow them to talk freely and do not ask leading questions
- Stay calm and do not show that you are shocked or upset
- Tell the children that they have done the right thing in telling you. Do not tell them they should have told you sooner
- Explain what will happen next and that you will have to pass this information on. Do not promise to keep a secret
- Record the conversation on the CPOMS system as soon as possible in the child's own words. Stick to the facts, and do not put your own judgement on it
- The DSLs will be notified that a new concern has been logged. Alternatively, if appropriate, make a referral to children's social care and/or the police directly (see 7.2), and tell the DSL as soon as possible that you have done so
- Listen to and believe them. Allow them time to talk freely and do not ask leading questions
- Stay calm and do not show that you are shocked or upset
- Tell the child they have done the right thing in telling you. Do not tell them they should have told you sooner

9.3 If you discover that FGM has taken place or a pupil is at risk of FGM

The Department for Education's Keeping Children Safe in Education explains that FGM comprises "all procedures involving partial or total removal of the external female genitalia, or other injury to the female genital organs". FGM is illegal in the UK and a form of child abuse with long-lasting, harmful consequences. It is also known as 'female genital cutting', 'circumcision' or 'initiation'. Possible indicators that a pupil has already been subjected to FGM, and factors that suggest a pupil may be at risk, are set out in Appendix 4.

Any teacher who discovers (either through disclosure by the victim or visual evidence) that an act of FGM appears to have been carried out on a **pupil under 18** must immediately report this to the police, personally. This is a statutory duty, and teachers will face disciplinary sanctions for failing to meet it. Unless they have been appropriate.

Any other member of staff who discovers that an act of FGM appears to have been carried out on a **pupil under 18** must speak to the DSL and follow our local safeguarding procedures.

The duty for teachers mentioned above does not apply in cases where a pupil is *at risk* of FGM or FGM is suspected but is not known to have been carried out. Staff should not examine pupils.

Any member of staff who suspects a pupil is *at risk* of FGM or suspects that FGM has been carried out must speak to the DSL and follow our local safeguarding procedures.

9.4 If you have Concerns about a Child (as opposed to believing a child is suffering or likely to suffer from harm, or is in immediate danger)

Figure 1 on page 11 illustrates the procedure to follow if you have concerns about a child's welfare. Where possible, speak to the DSL first to agree a course of action. If in exceptional circumstances the DSL is not available, this should not delay appropriate action being taken. Speak to a deputy DSL, member of the senior leadership team and/or take advice from the Local Authority's children's social care. You can also seek advice at any time from the NSPCC helpline on 0808 800 5000. Share details of any actions you take with the DSL as soon as practically possible.

Make a referral to Local Authority children's social care directly, if appropriate (see 'Referral' below). Share any action taken with the DSL as soon as possible.

Early Help: If early help is appropriate, the DSL will generally lead on liaising with other agencies and setting up an inter-agency assessment as appropriate. Staff may be required to support other agencies and professionals in an early help assessment, in some cases acting as the lead practitioner. The DSL will keep the case under constant review and the school will consider a referral to Local Authority children's social care if the situation does not seem to be improving. Timelines of interventions will be monitored and reviewed.

Our local procedures for Early Help: Early help means providing support as soon as possible to help families cope with difficulties and working together with other services to prevent bigger problems emerging. Support can come from a range of services and organisations, for parents, children and young people of any age. The aim is to provide the right action at the right time with the right support.

Luton and Bedford Borough Council provide Early help to families through the Family Partnership. Details of this can be found here [Family Partnership Website](#) and [Early Help for families, Bedford](#).

Early Help Assessment: An Early Help Assessment (EHA) is designed to help a child receive the right support at an early stage. Early help assessment form.

An EHA should be used for any case that requires Early Help services or support. The Early Help system can be found here [Early Help Process](#)

Referral: If it is appropriate to refer the case to the Local Authority children's social care or the police, the DSL will make the referral or support you to do so. If you make a referral directly (see section 9.1), you must tell the DSL as soon as possible.

The Local Authority will make a decision within 1 working day of a referral about what course of action to take and will let the person who made the referral know the outcome. The DSL or person who made the referral must follow up with the Local Authority if this information is not made available, and ensure outcomes are properly recorded.

If the child's situation does not seem to be improving after the referral, the DSL or person who made the referral must follow local escalation procedures to ensure their concerns have been addressed and that the child's situation improves.

9.5 If you have Concerns about Extremism

If a child is not suffering or likely to suffer from harm, or in immediate danger, where possible speak to the DSL first to agree a course of action. If in exceptional circumstances the DSL is not available, speak to a member of the senior leadership team and/or seek advice from Local Authority children's social care. Where there is a concern, the DSL will consider the level of risk and decide which agency to make a referral to. This could include [Channel](#), the government's programme for identifying and supporting individuals at risk of being drawn into terrorism, or the Local Authority's children social care team.

The Department for Education also has a dedicated telephone helpline, 020 7340 7264, which school staff and governors can call to raise concerns about extremism with respect to a pupil. You can also email counter.extremism@education.gov.uk. Note that this is not for use in emergency situations. In an emergency, call 999 or the confidential anti-terrorist hotline on 0800 789 321 if you:

- Think someone is in immediate danger
- Think someone ,may be planning to travel to join an extremist group
- See or hear something that may be terrorist-related

9.6 If you have a Mental Health Concern

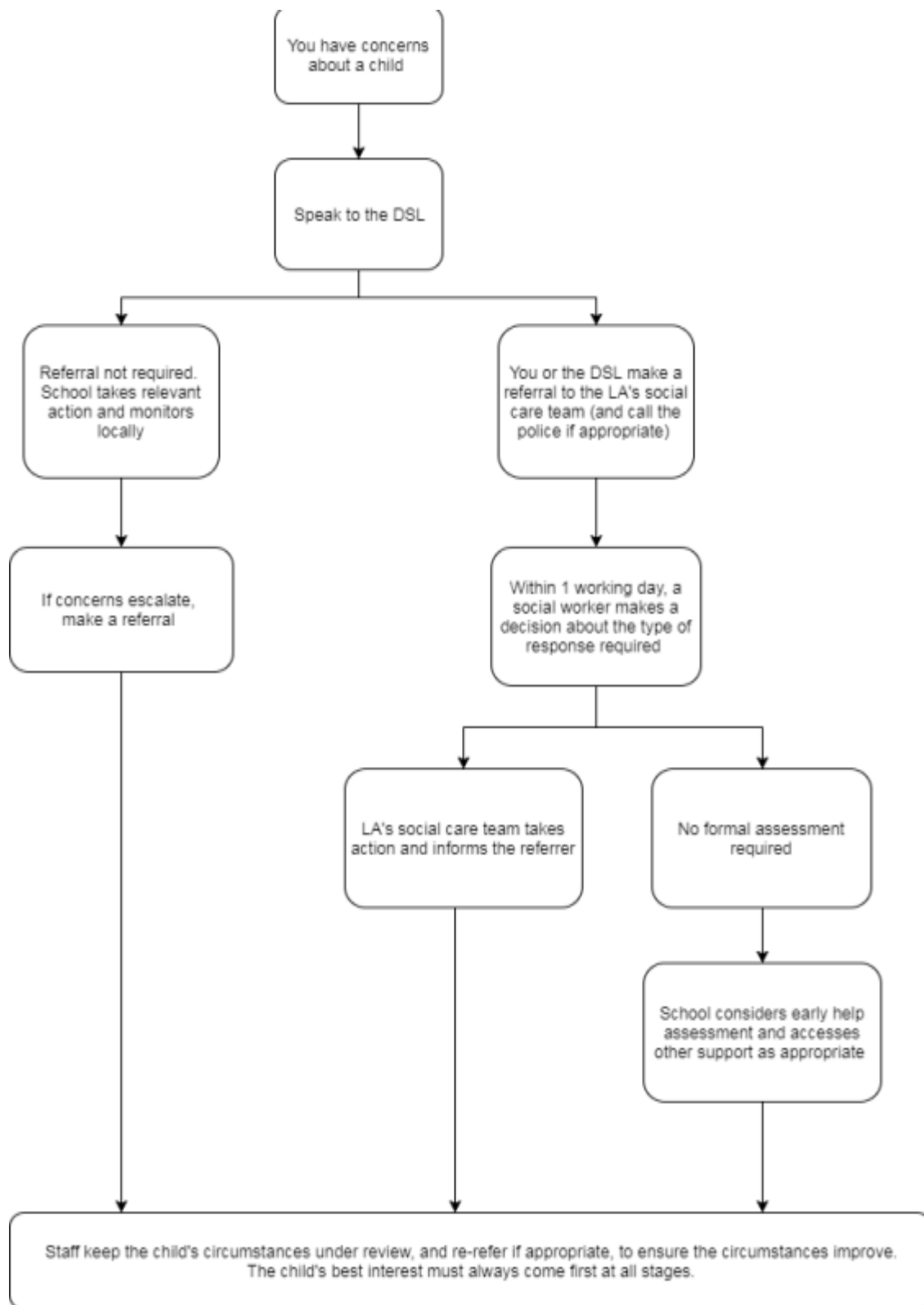
Mental health problems can, in some cases, be an indicator that a child has suffered or is at risk of suffering abuse, neglect or exploitation. Staff will be alert to behavioural signs that suggest a child may be experiencing a mental health problem or be at risk of developing one.

If you have a mental health concern about a child that is also a safeguarding concern, take immediate action by following the steps in section 9.4. If you have a mental health concern that is **not** also a safeguarding concern, speak to the DSL to agree on a course of action.

Refer to the Department for Education guidance on [mental health and behaviour in schools](#) for more information.

Figure 1: procedure if you have concerns about a child's welfare (as opposed to believing a child is suffering or likely to suffer from harm, or in immediate danger)

(Note – if the DSL is unavailable, this should not delay action. See section 9.4 for what to do.)



9.7 Concerns about a Staff Member, Supply Teacher or Volunteer

If you have concerns about a member of staff (including a supply teacher or volunteer), or an allegation is made about a member of staff (including a supply teacher or volunteer) posing a risk of harm to children, speak to the headteacher. If the concerns/allegations are about the headteacher, speak directly to the Chair of Governors.

Phone number available from the Clerk to Governors (details on contacts list).

The headteacher/chair of governors will then follow the procedures set out in appendix 3, if appropriate.

9.8 Allegations of Abuse made Against Other Pupils

We recognise that children are capable of abusing their peers. Abuse will never be tolerated or passed off as “banter”, “just having a laugh” or “part of growing up”, We also recognise the gendered nature of Child on Child abuse. However, all Child on Child abuse is unacceptable and will be taken seriously. Most cases of pupils hurting other pupils will be dealt with under our school’s Behaviour Policy, but this Safeguarding Policy will apply to any allegations that raise safeguarding concerns. This might include where the alleged behaviour:

- Is serious, and potentially a criminal offence
- Could put pupils at the school at risk
- Is violent
- Involves pupils being forced to use drugs or alcohol
- Involves sexual exploitation, sexual abuse or sexual harassment, such as indecent exposure, sexual assault, upskirting or sexually inappropriate pictures or videos, including sexting

If a pupil makes an allegation of abuse against another pupil:

- You must record the allegation and tell the DSL, but do not investigate it
- The DSL will contact the Local Authority’s children’s social care team and follow its advice, as well as the police if the allegation involves a potential criminal offence
- The DSL will put a risk assessment and support plan into place for all children involved (including the victim(s), the child(ren) against whom the allegation has been made and any others affected) with a named person they can talk to if needed
- The DSL will contact the children and adolescent mental health services (CAMHS), if appropriate

We will minimise the risk of Child on Child abuse by:

- Challenging any form of derogatory or sexualised language or behaviour, including requesting or sending sexual images
- Being vigilant to issues that particularly affect different genders – for example, sexualised or aggressive touching or grabbing towards female pupils, and initiation or hazing type violence with respect to boys
- Ensuring our curriculum helps to educate pupils about appropriate behaviour and consent
- Ensuring pupils know they can talk to staff confidentially
- Ensuring staff are trained to understand that a pupil harming a peer could be a sign that the child is being abused themselves, and that this would fall under the scope of this policy

9.9 Sexting

If you are made aware of an incident involving sexting (also known as ‘youth produced sexual imagery’), you must report it to the DSL immediately.

You must **not**:

- View, download or share the imagery yourself, or ask a pupil to share or download it. If you have already viewed the imagery by accident, you must report this to the DSL
- Delete the imagery or ask the pupil to delete it
- Ask the pupil(s) who are involved in the incident to disclose information regarding the imagery (this is the DSL's responsibility)
- Share information about the incident with other members of staff, the pupil(s) it involves or their, or other, parents and/or carers
- Say or do anything to blame or shame any young people involved
- You should explain that you need to report the incident, and reassure the pupil(s) that they will receive support and help from the DSL

Initial review meeting: Following a report of an incident, the DSL will hold an initial review meeting with appropriate school staff. This meeting will consider the initial evidence and aim to determine:

- Whether there is an immediate risk to pupils
- If a referral needs to be made to the police and/or children's social care
- What further information is required to decide on the best response
- Whether the imagery has been shared widely and via what service and/or platforms (this may be unknown)
- Whether immediate action should be taken to delete or remove the images from devices or online services
- Any relevant facts about the pupils involved which would influence risk assessment
- If there is a need to contact another school, setting or individual
- Whether to contact parents or carers of pupils involved (in most cases parents should be involved)

The DSL will make an immediate referral to police and/or children's social care if:

- The incident involves an adult
- There is reason to believe that a young person has been coerced, blackmailed or groomed, or if there are concerns about their capacity to consent (for example owing to special educational needs)
- What the DSL knows about the imagery suggests the content depicts sexual acts which are unusual for the young person's developmental stage, or are violent
- The imagery involves sexual acts and any pupil in the imagery is under 13
- The DSL has reason to believe a pupil is at immediate risk of harm owing to the sharing of the imagery (for example, the young person is presenting as suicidal or self-harming)

If none of the above apply then the DSL, in consultation with other members of staff as appropriate, may decide to respond to the incident without involving the police or children's social care.

Further review by the DSL: If at the initial review stage, a decision has been made not to refer to police and/or children's social care, the DSL will conduct a further review. They will hold interviews with the pupils involved (if appropriate) to establish the facts and assess the risks. If at any point in the process there is a concern that a pupil has been harmed or at risk of harm, a referral will be made to children's social care and/or the police immediately.

Informing parents: The DSL will inform parents at an early stage and keep them involved in the process, unless there is a good reason to believe that involving them would put the pupil at risk of harm.

Referring to the police: The DSL will decide if it is necessary to refer an incident to the police.

Recording incidents: All sexting incidents and the decisions made in responding to them will be recorded. The record-keeping arrangements set out in section 17 of this policy also apply to recording incidents of sexting.

10. Notifying Parents

Where appropriate, we will discuss any concerns about a child with the child's parents. The DSL will normally do this in the event of a suspicion or disclosure. Other staff will only talk to parents about such concerns following consultation with the DSL. If we believe that notifying the parents would increase the risk to the child, we will discuss this with the Local Authority children's social care team before doing so. In the case of allegations of abuse made against other children, we will normally notify the parents of all the children involved.

11. Pupils with Special Educational Needs and Disabilities

We recognise that pupils with special educational needs and disabilities (SEND) can face additional safeguarding challenges. Additional barriers can exist when recognising abuse and neglect in this group, including:

- Assumptions that indicators of possible abuse such as behaviour, mood and injury relate to the child's disability without further exploration
- Pupils being more prone to peer group isolation than other pupils
- The potential for pupils with SEN and disabilities being disproportionately impacted by behaviours such as bullying, without outwardly showing any signs
- Communication barriers and difficulties in overcoming these barriers

12. Pupils with a Social Worker

Pupils may need a social worker due to safeguarding or welfare needs. We recognise that a child's experiences of adversity and trauma can leave them vulnerable to further harm as well as potentially creating barriers to attendance, learning, or social, emotional and mental health. The DSL and all members of staff will work with and support social workers to help protect vulnerable children.

Where we are aware that a pupil has a social worker, the DSL will always consider this fact to ensure any decisions are made in the best interests of the pupil's safety, welfare and educational outcomes. For example, it will inform decisions about:

- Responding to unauthorised absence or missing education where there are known safeguarding risks
- The provision of pastoral and/or academic support

13. Looked-After and Previously Looked-After Children

We will ensure that:

- Appropriate staff have relevant information about children's looked after legal status, contact arrangements with birth parents or those with parental responsibility, and care arrangements
- The DSL has details of children's social workers and relevant virtual school heads

The headteacher/DSL is responsible for promoting the educational achievement of looked after children and previously looked after children in line with [statutory guidance](#).

As part of this role, the DSL will ensure that any safeguarding concerns regarding looked after and

previously looked-after children are quickly and effectively responded to.

Work with virtual school heads to promote the educational achievement of looked after and previously looked after children, including discussing how pupil premium plus funding can be best used to support looked after children and meet the needs identified in their personal education plans.

14. EYFS Child Protection

Early Years staff will be alert to any issues of concern in the child's life at home or elsewhere. Staff will implement this school policy and procedures, to safeguard children. The taking of photos on mobile phones is strictly prohibited within the EYFS. Photos should only be taken on school devices for the purposes of recording children's development and should be deleted as soon as they have been printed. DSLs will provide support, advice and guidance to staff on an ongoing basis.

15. Mobile Phones and Cameras

Staff are allowed to bring their personal phones to school for their own use, but will limit such use to non-contact time when pupils are not present. Staff members' personal phones will remain in their bags or cupboards during contact time with pupils, unless permission has been sought from the Headteacher from an exceptional circumstance. All phones will be locked, to prevent use by others. Staff will not take pictures or recordings of pupils on their personal phones or cameras. We will follow the General Data Protection Regulation and Data Protection Act 2018 when taking and storing photos and recordings for use in the school. Please refer to the staff handbook for further details.

16. Complaints and Concerns about School Safeguarding Policies

16.1 Complaints Against Staff:

Complaints against staff that are likely to require a child protection investigation will be handled in accordance with our procedures for dealing with allegations of abuse made against staff (Appendix 3).

16.2 Other Complaints:

Please refer to the Complaints Policy.

16.3 Whistle-Blowing: Please refer to the Whistle-Blowing Policy, which covers concerns regarding the way the school safeguards pupils, including poor or unsafe practice, or potential failures.

17. Record-Keeping

We will hold records in line with our records retention schedule.

All safeguarding concerns, discussions, decisions made and the reasons for those decisions, must be recorded in writing. If you are in any doubt about whether to record something, discuss it with the DSL.

Non-confidential records will be easily accessible and available in the individual pupil files in the office. Confidential information and records will be held securely and are only available to those who have a right or professional need to see them.

Safeguarding records relating to individual children will be retained for a reasonable period of time after they have left the school. Refer to the school's GDPR Annexe for further guidance.

If a child for whom the school has, or has had, safeguarding concerns moves to another school, the DSL will ensure that their child protection file is forwarded promptly and securely, and separately from the main

pupil file. In addition, if the concerns are significant or complex, and/or social services are involved, the DSL will speak to the DSL of the receiving school and provide information to enable them to have time to make any necessary preparations to ensure the safety of the child.

Information regarding LACs is held electronically (the ePEP) using the chosen provider selected by the Local Authority.

Appendix 2 sets out our policy on record-keeping specifically with respect to recruitment and pre-employment checks.

Appendix 3 sets out our policy on record-keeping with respect to allegations of abuse made against staff.

18. Training

18.1 All staff

All staff members will undertake safeguarding and child protection training at induction, including on whistle-blowing procedures, to ensure they understand the school's safeguarding systems and their responsibilities, and can identify signs of possible abuse or neglect. This training will be regularly updated and will be in line with the advice from safeguarding partners.

All staff will have training on the government's anti-radicalisation strategy, Prevent, to enable them to identify children at risk of being drawn into terrorism and to challenge extremist ideas.

Staff will also receive regular safeguarding and child protection updates (for example, through briefings, emails, e- bulletins and staff meetings) as required, but at least annually.

Volunteers will receive appropriate training, as applicable.

18.2 The DSL and Deputies

The DSL and deputies will undertake child protection and safeguarding training at least every two years. In addition, they will update their knowledge and skills at regular intervals and at least annually (for example, through e- bulletins, meeting other DSLs, or taking time to read safeguarding developments. They will also undertake Prevent awareness training.

18.3 Governors

All governors receive training about safeguarding, to make sure they have the knowledge and information needed to perform their functions and understand their responsibilities. As the chair of governors may be required to act as the 'case manager' in the event that an allegation is made against the headteacher, they receive training in managing allegations for this purpose.

18.4 Recruitment - Interview Panels

At least one person conducting any interview for a post at the school will have undertaken safer recruitment training. This will cover, as a minimum, the contents of the Department for Education statutory guidance, Keeping Children Safe in Education, and will be in line with local safeguarding procedures.

18.5 Staff who have Contact with Pupils and Families

All staff who have contact with children and families will have supervisions which will provide them with support, coaching and training, promote the interests of children and allow for confidential discussions of sensitive issues.

19. Monitoring Arrangements

This policy will be reviewed **annually**. At every review, it will be approved by the Trust board and each full governing board.

20. Links with Other Policies

This policy links to the following policies and procedures:

- Behaviour
- Staff Handbook
- Complaints
- Health and Safety
- Attendance Online Safety Equalities
- EYFS
- Relationships and Sex Education
- First Aid and Administering Medicines Curriculum
- Whistle-Blowing (Public Interest Disclosure Act Confidential Reporting) Anti-Bullying
- IT Acceptable Use
- Confidentiality
- Child on Child Abuse
- Safer Recruitment
- Referencing

**These Appendices are based on the Department for Education's Statutory Guidance,
Keeping Children Safe in Education.**

Appendix 1: Types of Abuse

Abuse, including neglect, and safeguarding issues are rarely standalone events that can be covered by one definition or label. In most cases, multiple issues will overlap.

Physical abuse may involve hitting, shaking, throwing, poisoning, burning or scalding, drowning, suffocating or otherwise causing physical harm to a child. Physical harm may also be caused when a parent or carer fabricates the symptoms of, or deliberately induces, illness in a child.

Emotional abuse is the persistent emotional maltreatment of a child such as to cause severe and adverse effects on the child's emotional development. Some level of emotional abuse is involved in all types of maltreatment of a child. Although it may occur alone.

Emotional abuse may involve:

- Conveying to a child that they are worthless or unloved, inadequate, or valued only insofar as they meet the needs of another person
- Not giving the child opportunities to express their views, deliberately silencing them or 'making fun' of what they say or how they communicate
- Age or developmentally inappropriate expectations being imposed on the child. These may include interactions that are beyond the child's developmental capability, as well as overprotection or limitation of exploration and learning, or preventing the child participating in normal social interactions
- Seeing or hearing the ill-treatment of another
- Serious bullying (including cyberbullying), causing children frequently to feel frightened or in danger, or the exploitation or corruption of children

Sexual Abuse involves forcing or enticing a child or young person to take part in sexual activities, not necessarily involving a high level of violence, whether or not the child is aware of what is happening. The activities may involve:

- Physical contact, including assault by penetration (for example rape or oral sex) or non-penetrative acts such as masturbation, kissing, rubbing and touching outside of clothing
- Non-contact activities, such as involving children in looking at, or in the production of, sexual images, watching sexual activities, encouraging children to behave in sexually inappropriate ways, or grooming a child in preparation for abuse (including via the internet)

Sexual abuse is not solely perpetrated by adult males. Women can also commit acts of sexual abuse, as can other children.

Neglect is the persistent failure to meet a child's basic physical and/or psychological needs, likely to result in the serious impairment of the child's health or development. Neglect may occur during pregnancy as a result of maternal substance abuse.

Once a child is born, neglect may involve a parent or carer failing to:

- Provide adequate food, clothing and shelter (including exclusion from home or abandonment)
- Protect a child from physical and emotional harm or danger
- Ensure adequate supervision (including the use of inadequate care-givers)
- Ensure access to appropriate medical care or treatment
- It may also include neglect of, or unresponsiveness to, a child's basic emotional needs

Appendix 2: Safer Recruitment and DBS checks - Policy and Procedures (see Safer Recruitment and Referencing Policies for more)

Recruitment and Selection Process

The recruitment steps outlined below are based on part 3 of Keeping Children Safe in Education.

To make sure we recruit suitable people, we will ensure that those involved in the recruitment and employment of staff to work with children have received appropriate safer recruitment training.

We have put the following steps in place during our recruitment and selection process to ensure we are committed to safeguarding and promoting the welfare of children.

Advertising

When advertising roles, we will make clear:

- Our school's commitment to safeguarding and promoting the welfare of children
- That safeguarding checks will be undertaken, including social media
- The safeguarding requirements and responsibilities of the role, such as the extent to which the role will involve contact with children
- Whether or not the role is exempt from the Rehabilitation of Offenders Act 1974 and the amendments to the Exceptions Order 1975, 2013 and 2020. If the role is exempt, certain spent convictions and cautions are 'protected', so they do not need to be disclosed, and if they are disclosed, we cannot take them into account

Application Forms

Our application forms will:

- Include a statement saying that it is an offence to apply for the role if an applicant is barred from engaging in regulated activity relevant to children (where the role involves this type of regulated activity)
- Include a copy of, or link to, our child protection and safeguarding policy and our policy on the employment of ex-offenders

Shortlisting

Our shortlisting process will involve at least two people and will:

- Consider any inconsistencies and look for gaps in employment and reasons given for them Explore all potential concerns

Once we have shortlisted candidates, we will ask shortlisted candidates to:

Complete a self-declaration of their criminal record or any information that would make them unsuitable to work with children, so that they have the opportunity to share relevant information and discuss it at interview stage. The information we will ask for includes:

- If they have a criminal history
- Whether they are included on the barred list
- Whether they are prohibited from teaching
- Information about any criminal offences committed in any country in line with the law as applicable in England and Wales

- Any relevant overseas information
- Sign a declaration confirming the information they have provided is true

Seeking References and Checking Employment History

We will obtain references before interview. Any concerns raised will be explored further with referees and taken up with the candidate at interview.

When seeking references we will:

- Not accept open references
- Liaise directly with referees and verify any information contained within references with the referees
- Ensure any references are from the candidate's current employer and completed by a senior person. Where the referee is school based, we will ask for the reference to be confirmed by the headteacher as accurate in respect to disciplinary investigations
- Obtain verification of the candidate's most recent relevant period of employment if they are not currently employed
- Secure a reference from the relevant employer from the last time the candidate worked with children if they are not currently working with children
- Compare the information on the application form with that in the reference and take up any inconsistencies with the candidate
- Resolve any concerns before any appointment is confirmed

Interview and Selection

When interviewing candidates, we will:

- Probe any gaps in employment, or where the candidate has changed employment or location frequently, and ask candidates to explain this
- Explore any potential areas of concern to determine the candidate's suitability to work with children
- Record all information considered and decisions made

Pre-Appointment Vetting Checks

We will record all information on the checks carried out in the school's single central record (SCR). Copies of these checks, where appropriate, will be held in individual's personnel files. We follow requirements and best practice in retaining copies of these checks as set out below.

New Staff

All offers of appointment will be conditional until satisfactory completion of the necessary pre-employment checks. When appointing new staff we will:

- Verify their identity
- Obtain (via the applicant) an enhanced DBS certificate, including barred list information for those who will be engaging in regulated activity (see definition below). We will obtain the certificate before, or as soon as practicable after, appointment, including when using the DBS update service. We will not keep a copy of the certificate for longer than 6 months, but when the copy is destroyed we may still keep a record of the fact that vetting took place, the result of the check and recruitment decision taken
- Obtain a separate barred list check if they will start work in regulated activity before the DBS

certificate is available

- Verify their mental and physical fitness to carry out their work responsibilities
- Verify their right to work in the UK. We will keep a copy of this verification for the duration of the member of staff's employment and for 2 years afterwards
- Verify their professional qualifications, as appropriate
- Ensure they are not subject to a prohibition order if they are employed to be a teacher
- Carry out further additional checks, as appropriate, on candidates who have lived or worked outside of the UK. Where available, these will include:

- For all staff, including teaching positions: [criminal records checks for overseas applicants](#)

- For teaching positions: obtaining a letter of professional standing from the professional regulating authority in the country where the applicant has worked

- Check that candidates taking up a management position are not subject to a prohibition from management (section 128) direction made by the secretary of state

As we have children under the age of 8:

We will ensure that appropriate checks are carried out to ensure that individuals are not disqualified under the 2018 Childcare Disqualification Regulations and Childcare Act 2006. When we take a decision that an individual falls outside of the scope of these regulations and we do not carry out such checks, we will retain a record of our assessment on the individual's personnel file. This will include our evaluation of any risks and control measures put in place, and any advice sought.

Regulated Activity means a person who will be:

- Responsible, on a regular basis in a school or college, for teaching, training, instructing, caring for or supervision children; or
- Carrying out paid, or unsupervised unpaid, work regularly in a school or college where that work provides an opportunity for contact with children; or
- Engaging in intimate or personal care or overnight activity, even if this happens only once and regardless of whether or not they are supervised

Existing Staff

In certain circumstances we will carry out relevant checks on existing staff as if the individual was a new member of staff. These circumstances are when:

- There are concerns about the existing member of staff suitability to work with children; or
- An individual moves from a post that is not regulated activity to one that is; or
- There have been a break in service of 12 weeks or more

We will refer to the DBS anyone who has harmed, or poses a risk of harm, to a child or vulnerable adult where:

- We believe the individual has engaged in [relevant conduct](#); or
- We believe the individual has received a caution or conviction for a relevant (automatic barring either with or without the right to make representations) offence, under the [Safeguarding](#)

- We believe the 'harm test' is satisfied in respect of the individual (i.e. they may harm a child or vulnerable adult or put them at risk of harm); and
- The individual has been removed from working in regulated activity (paid or unpaid) or would have been removed if they had not left

Agency and Third-Party Staff

We will obtain written notification from any agency or third-party organisation that it has carried out the necessary safer recruitment checks that we would otherwise perform. We will also check that the person presenting themselves for work is the same person on whom the checks have been made.

Contractors

We will ensure that any contractor, or any employee of the contractor, who is to work at the school has had the appropriate level of DBS check (this includes contractors who are provided through a PFI or similar contract). This will be:

- An enhanced DBS check with barred list information for contractors engaging in regulated activity
- An enhanced DBS check, not including barred list information, for all other contractors who are not in regulated activity but whose work provides them with an opportunity for regular contact with children
- We will obtain the DBS check for self-employed contractors.

We will not keep copies of such checks for longer than 6 months.

Contractors who have not had any checks will not be allowed to work unsupervised or engage in regulated activity under any circumstances.

We will check the identity of all contractors and their staff on arrival at the school.

For self-employed contractors such as music teachers or sports coaches, we will ensure that appropriate checks are carried out to ensure that individuals are not disqualified under the 2018 Childcare Disqualification Regulations and Childcare Act 2006. When we decide that an individual falls outside of the scope of these regulations and we do not carry out such checks, we will retain a record of our assessment. This will include our evaluation of any risks and control measures put in place, and any advice sought.

Trainee/Student Teachers

Where applicants for initial teacher training are salaried by us, we will ensure that all necessary checks are carried out.

Where trainee teachers are fee-funded, we will obtain written confirmation from the training provider that necessary checks have been carried out and that the trainee has been judged by the provider to be suitable to work with children.

In both cases, this includes checks to ensure that individuals are not disqualified under the 2018 Childcare Disqualification Regulations and Childcare Act 2006.

Volunteers

We will:

- Never leave an unchecked volunteer unsupervised or allow them to work in regulated activity
- Obtain an enhanced DBS check with barred list information for all volunteers who are new to working in regulated activity
- Carry out a risk assessment when deciding whether to seek an enhanced DBS check without barred list information for any volunteers not engaging in regulated activity. We will retain a record of this risk assessment
- Ensure that appropriate checks are carried out to ensure that individuals are not disqualified under the 2018 Childcare Disqualification Regulations and Childcare Act 2006. When we decide that an individual falls outside of the scope of these regulations and we do not carry out such checks, we will retain a record of our assessment. This will include our evaluation of any risks and control measures put in place, and any advice sought

Governors, Trustees and Members

All governors, Trustees, local governors and members will have an enhanced DBS check without barred list information.

They will have an enhanced DBS check with barred list information if working in regulated activity.

All Trustees, local governors and members will also have the following checks:

- A section 128 check (to check prohibition on participation in management under [section 128 of the Education and Skills Act 2008](#)). [Section 128 checks are only required for local governors if they have retained or been delegated any management responsibilities.]
- Identity
- Right to work in the UK
- Other checks deemed necessary if they have lived or worked outside the UK

Adults who Supervise Pupils on Work Experience

When organising work experience, we will ensure that policies and procedures are in place to protect children from harm.

We will also consider whether it is necessary for barred list checks to be carried out on the individuals who supervise a pupil under 16 on work experience. This will depend on the specific circumstances of the work experience, including the nature of the supervision, the frequency of the activity being supervised, and whether the work is regulated activity.

Appendix 3: Allegations of Abuse made Against Staff

This section of this policy applies to all cases in which it is alleged that a current member of staff, including a supply teacher or volunteer, has:

- Behaved in a way that has harmed a child, or may have harmed a child, or
- Possibly committed a criminal offence against or related to a child, or
- Behaved towards a child or children in a way that indicates he or she may pose a risk of harm to children, or
- Behaved or may have behaved in a way that indicates they may not be suitable to work with children

It applies regardless of whether the alleged abuse took place in the school. Allegations against a teacher who is no longer teaching and historical allegations of abuse will be referred to the police.

We will deal with any allegation of abuse against a member of staff or volunteer very quickly, in a fair and consistent way that provides effective child protection while also supporting the individual who is the subject of the allegation.

Our procedures for dealing with allegations will be applied with common sense and judgement.

Suspension of the accused until the case is resolved: Suspension will not be the default position, and will only be considered in cases where there is reason to suspect that a child or other children is/are at risk of harm, or the case is so serious that it might be grounds for dismissal. In such cases, we will only suspend an individual if we have considered all other options available and there is no reasonable alternative.

Based on an assessment of risk, we will consider alternatives such as:

- Redeployment within the school so that the individual does not have direct contact with the child or children concerned
- Providing an assistant to be present when the individual has contact with children
- Redeploying the individual to alternative work in the school so that they do not have unsupervised access to children
- Moving the child or children to classes where they will not come into contact with the individual, making it clear that this is not a punishment and parents have been consulted

Definitions for outcomes of allegation investigations

Substantiated: there is sufficient evidence to prove the allegation

Malicious: there is sufficient evidence to disprove the allegation and there has been a deliberate act to deceive

False: there is sufficient evidence to disprove the allegation

Unsubstantiated: there is insufficient evidence to either prove or disprove the allegation (this does not imply guilt or innocence)

Unfounded: to reflect cases where there is no evidence or proper basis which supports the allegation being made

Procedure for dealing with allegations

In the event of an allegation that meets the criteria above, the headteacher (or chair of governors where the headteacher is the subject of the allegation) will take the following steps:

- Immediately discuss the allegation with the designated officer at the Local Authority. This is to consider the nature, content and context of the allegation and agree a course of action, including whether further enquiries are necessary to enable a decision on how to proceed, and whether it is necessary to involve the police and/or *before* consulting the designated officer - for example, if the accused individual is deemed to be an immediate risk to children or there is evidence of a possible criminal offence.)
- Inform the accused individual of the concerns or allegations and likely course of action as soon as possible after speaking to the designated officer (and the police or children's social care services, where necessary). Where the police and/or children's social care services are involved, the case manager will only share such information with the individual as has been agreed with those agencies
- Where appropriate (in the circumstances described above), carefully consider whether suspension of the individual from contact with children at the school is justified or whether alternative arrangements such as those outlined above can be put in place. Advice will be sought from the designated officer, police and/or social care services, as appropriate

If immediate suspension is considered necessary, agree and record the rationale for this with the designated officer. The record will include information about the alternatives to suspension that have been considered, and why they were rejected. Written confirmation of the suspension will be provided to the individual facing the allegation or concern within 1 working day, and the individual will be given a named contact at the school and their contact details.

If it is decided that no further action is to be taken in regard to the subject of the allegation or concern, record this decision and the justification for it and agree with the designated officer what information should be put in writing to the individual and by whom, as well as what action should follow both in respect of the individual and those who made the initial allegation.

If it is decided that further action is needed, take steps as agreed with the designated officer to initiate the appropriate action in school and/or liaise with the police and/or children's social care services as appropriate.

Provide effective support for the individual facing the allegation or concern, including appointing a named representative to keep them informed of the progress of the case and considering what other support is appropriate.

Inform the parents or carers of the child/children involved about the allegation as soon as possible if they do not already know (following agreement with children's social care services and/or the police, if applicable). The case manager (HT) will also inform the parents or carers of the requirement to maintain confidentiality about any allegations made against teachers (where this applies) while investigations are ongoing. Any parent or carer who wishes to have the confidentiality restrictions removed in respect of a teacher will be advised to seek legal advice.

Keep the parents or carers of the child/children involved informed of the progress of the case and the outcome, where there is not a criminal prosecution, including the outcome of any disciplinary process (in confidence).

Make a referral to the DBS where it is thought that the individual facing the allegation or concern has engaged in conduct that harmed or is likely to harm a child, or if the individual otherwise poses a risk of harm to a child.

As we provide Early Years Education we will:

Inform Ofsted of any allegations of serious harm or abuse by any person living, working, or looking after children at the premises (whether the allegations relate to harm or abuse committed on the premises or elsewhere), and any action taken in respect of the allegations. This notification will be made as soon as reasonably possible and always within 14 days of the allegations being made.

If the school is made aware that the secretary of state has made an interim prohibition order in respect of an individual, we will immediately suspend that individual from teaching, pending the findings of the investigation by the Teaching Regulation Agency.

Where the police are involved, wherever possible the governing board as the employer in your school] will ask the police at the start of the investigation to obtain consent from the individuals involved to share their statements and evidence for use in the school's disciplinary process, should this be required at a later point.

Additional considerations for supply staff: If there are concerns or an allegation is made against someone not directly employed by the school, such as supply staff provided by an agency, we will take the actions below in addition to our standard procedures.

We will not decide to stop using a supply teacher due to safeguarding concerns without finding out the facts and liaising with our Local Authority designated officer to determine a suitable outcome.

The governing board will discuss with the agency whether it is appropriate to suspend the supply teacher, or redeploy them to another part of the school, while the school carries out the investigation.

We will involve the agency fully, but the school will take the lead in collecting the necessary information and providing it to the Local Authority designated officer as required.

We will address issues such as information sharing, to ensure any previous concerns or allegations known to the agency are taken into account (we will do this, for example, as part of the allegations management meeting or by liaising directly with the agency where necessary).

When using an agency, we will inform them of our process for managing allegations, and keep them updated about our policies as necessary, and will invite the agency's HR manager or equivalent to meetings as appropriate.

Timescales

- Any cases where it is clear immediately that the allegation is unsubstantiated or malicious will be resolved within 1 week
- If the nature of an allegation does not require formal disciplinary action, we will institute appropriate action within 3 working days
- If a disciplinary hearing is required and can be held without further investigation, we will hold this within 15 working days

Specific actions:

Action following a criminal investigation or prosecution: The case manager (HT) will discuss with the Local Authority's designated officer whether any further action, including disciplinary action, is appropriate, and, if so, how to proceed, taking into account information provided by the police and/or children's social care services.

Conclusion of a case where the allegation is substantiated: If the allegation is substantiated and the individual is dismissed or the school ceases to use their services, or the individual resigns or otherwise ceases to provide their services, the case manager and the school's personnel adviser will discuss with the designated officer whether to make a referral to the DBS for consideration of whether inclusion on the barred lists is required. If they think that the individual has engaged in conduct that has harmed (or is likely to harm) a child, or if they think the person otherwise poses a risk of harm to a child, they must make a referral to the DBS.

If the individual concerned is a member of teaching staff, the case manager (HT) and personnel adviser will discuss with the designated officer whether to refer the matter to the Teaching Regulation Agency to consider prohibiting the individual from teaching.

Individuals returning to work after suspension: If it is decided on the conclusion of a case that an individual who has been suspended can return to work, the case manager will consider how best to facilitate this. The case manager (HT) will also consider how best to manage the individual's contact with the child or children who made the allegation, if they are still attending the school.

Unsubstantiated or malicious allegations: If an allegation is shown to be deliberately invented, or malicious, the case manager (HT) , or other appropriate person in the case of an allegation against the headteacher, will consider whether any disciplinary action is appropriate against the pupil(s) who made it, or whether the police should be asked to consider whether action against those who made the allegation might be appropriate, even if they are not a pupil.

Confidentiality: The school will make every effort to maintain confidentiality and guard against unwanted publicity while an allegation is being investigated or considered. The case manager (HT) will take advice from the Local Authority's designated officer, police and children's social care services, as appropriate, to agree:

- Who needs to know about the allegation and what information can be shared
- How to manage speculation, leaks and gossip, including how to make parents or carers of a child/children involved aware of their obligations with respect to confidentiality
- What, if any, information can be reasonably given to the wider community to reduce speculation
- How to manage press interest if, and when, it arises

Record-keeping: The case manager will maintain clear records about any case where the allegation or concern meets the criteria above and store them on the individual's confidential personnel file for the duration of the case.

Such records will include:

- A clear and comprehensive summary of the allegation
- Details of how the allegation was followed up and resolved
- Notes of any action taken and decisions reached (and justification for these, as stated above)

If an allegation or concern is not found to have been malicious, the school will retain the records of the case on the individual's confidential personnel file, and provide a copy to the individual.

Where records contain information about allegations of sexual abuse, we will preserve these for the Independent Inquiry into Child Sexual Abuse (IICSA), for the term of the inquiry. We will retain all other records at least until the individual has reached normal pension age, or for 10 years from the date of the allegation if that is longer.

The records of any allegation that is found to be malicious will be deleted from the individual's personnel file.

References: When providing employer references, we will not refer to any allegation that has been proven to be false, unsubstantiated or malicious, or any history of allegations where all such allegations have been proven to be false, unsubstantiated or malicious.

Learning lessons: After any cases where the allegations are *substantiated*, we will review the circumstances of the case with the Local Authority's designated officer to determine whether there are any improvements that we can make to the school's procedures or practice to help prevent similar events in the future.

This will include consideration of (as applicable):

- Issues arising from the decision to suspend the member of staff
- The duration of the suspension
- Whether or not the suspension was justified
- The use of suspension when the individual is subsequently reinstated. We will consider how future investigations of a similar nature could be carried out without suspending the individual

Section 2: concerns that do not meet the harm threshold

This section is based on 'Section 2: Concerns that do not meet the harm threshold' in part 4 of Keeping Children Safe in Education.

This section applies to all concerns (including allegations) about members of staff, including supply teachers, volunteers and contractors, which do not meet the harm threshold set out in section 1 above.

Concerns may arise through, for example:

- Suspicion
- Complaint
- Disclosure made by a child, parent or other adult within or outside the school
- Pre-employment vetting checks

We recognise the importance of responding to and dealing with any concerns in a timely manner to safeguard the welfare of children.

Definition of low-level concerns

The term 'low-level' concern is any concern - no matter how small - that an adult working in or on behalf of the school may have acted in a way that:

- Is inconsistent with the staff code of conduct, including inappropriate conduct outside of work, and,
- Does not meet the allegations threshold or is otherwise not considered serious enough to consider a referral to the designated officer at the Local Authority

Examples of such behaviour could include, but are not limited to:

- Being overly friendly with children
- Having favourites
- Taking photographs of children on their mobile phone
- Engaging with a child on a one-to-one basis in a secluded area or behind a closed door
- Using inappropriate sexualised, intimidating or offensive language

Sharing low-level concerns

We recognise the importance of creating a culture of openness, trust and transparency to encourage all staff to share low-level concerns so that they can be addressed appropriately.

We will create this culture by:

- Ensuring staff are clear about what appropriate behaviour is, and are confident in distinguishing expected and appropriate behaviour from concerning, problematic or inappropriate behaviour, in themselves and others
- Empowering staff to share any low-level concerns as per section 9.7 of this policy
- Empowering staff to self-refer
- Addressing unprofessional behaviour and supporting the individual to correct it at an early stage
- Providing a responsive, sensitive and proportionate handling of such concerns when they are raised
- Helping to identify any weakness in the school's safeguarding system

Responding to low-level concerns

If the concern is raised via a third party, the headteacher will collect evidence where necessary by

speaking:

- Directly to the person who raised the concern, unless it has been raised anonymously
- To the individual involved and any witnesses

The headteacher will use the information collected to categorise the type of behaviour and determine any further action, in line with the school's staff behaviour policy/code of conduct.

Schools may add more detail about your procedures for responding to low-level concerns. Keeping Children Safe in Education also links to this report for more information Developing and implementing a low-level concerns policy: A guide for organisations which work with children]

Record Keeping

All low-level concerns will be recorded in writing. In addition to details of the concern raised, records will include the context in which the concern arose, any action taken and the rationale for decisions and action taken.

Records will be:

- Kept confidential, held securely and comply with the DPA 2018 and UK GDPR
- Reviewed so that potential patterns of concerning, problematic or inappropriate behaviour can be identified. Where a pattern of such behaviour is identified, we will decide on a course of action, either through our disciplinary procedures or, where a pattern of behaviour moves from a concern to meeting the harms threshold as described in section 1 of this appendix, we will refer it to the designated officer at the local authority
- Retained at least until the individual leaves employment at the school

Where a low-level concern relates to a supply teacher or contractor, we will notify the individual's employer, so any potential patterns of inappropriate behaviour can be identified.

References

We will not include low-level concerns in references unless:

- The concern (or group of concerns) has met the threshold for referral to the designated officer at the local authority and is found to be substantiated; and/or
- The concern (or group of concerns) relates to issues which would ordinarily be included in a reference, such as misconduct or poor performance

Appendix 4: Specific Safeguarding Issues

This appendix is based on the advice in Annex A of Keeping Children Safe in Education.

Annex A also includes information on further issues to be aware of, including children's involvement in the court system, children with family members in prison, and county lines. If you wish to cover these in the policy, consider including:

- An explanation of what the issue is and how your school approaches it (e.g. any preventative measures in place, training you provide for staff)
- What staff should be aware of and actions they should take
- How your school works with external agencies, where relevant

You should also ensure your policy reflects any locally agreed procedures put in place by the 3 safeguarding partners.

Children Missing from Education: A child going missing from education, particularly repeatedly, can be a warning sign of a range of safeguarding issues. This might include abuse or neglect, such as sexual abuse or exploitation or child criminal exploitation, or issues such as mental health problems, substance abuse, radicalisation, FGM or forced marriage.

There are many circumstances where a child may become missing from education, but some children are particularly at risk. These include children who:

- Are at risk of harm or neglect
- Are at risk of forced marriage or FGM
- Come from Gypsy, Roma, or Traveller families
- Come from the families of service personnel
- Go missing or run away from home or care
- Are supervised by the youth justice system
- Cease to attend a school
- Come from new migrant families

We will follow our procedures for unauthorised absence and for dealing with children who go missing from education, particularly on repeat occasions, to help identify the risk of abuse and neglect, including sexual exploitation, and to help prevent the risks of going missing in future. This includes informing the Local Authority if a child leaves the school without a new school being named, and adhering to requirements with respect to sharing information with the Local Authority, when applicable, when removing a child's name from the admissions register at non-standard transition points. See Children Missing Education Policy.

Staff will be trained in signs to look out for and the individual triggers to be aware of when considering the risks of potential safeguarding concerns which may be related to being missing, such as travelling to conflict zones, FGM and forced marriage.

If a staff member suspects that a child is suffering from harm or neglect, we will follow local child protection procedures, including with respect to making reasonable enquiries. We will make an immediate referral to the Local Authority in immediate danger.

Child Criminal Exploitation: Child criminal exploitation (CCE) is a form of abuse where an individual or group takes advantage of an imbalance of power to coerce, control, manipulate or deceive a child into criminal activity, in exchange for something the victim needs or wants, and/or for the financial or other advantage of the perpetrator or facilitator, and/or through violence or the threat of violence.

The abuse can be perpetrated by males or females, and children or adults. It can be a one-off occurrence or a series of incidents over time, and range from opportunistic to complex organised abuse.

The victim can be exploited even when the activity appears to be consensual. It does not always involve physical contact and can happen online. For example, young people may be forced to work in cannabis factories, coerced into moving drugs or money across the country (county lines), forced to shoplift or pickpocket, or to threaten other young people.

Indicators of CCE can include a child:

- Appearing with unexplained gifts or new possessions
- Associating with other young people involved in exploitation
- Suffering from changes in emotional wellbeing
- Misusing drugs and alcohol
- Going missing for periods of time or regularly coming home late
- Regularly missing school or education
- Not taking part in education

If a member of staff suspects CCE, they will discuss this with the DSL. The DSL will trigger the local safeguarding procedures, including a referral to the Local Authority's children social care team and the police, if appropriate.

Child Sexual Exploitation: Child sexual exploitation (CSE) is a form of abuse where an individual or group takes advantage of an imbalance of power to coerce, manipulate or deceive a child into sexual activity, in exchange for something the victim needs or wants and/or for the financial advantage or increased status of the perpetrator or facilitator. It may, or may not, be accompanied by violence or threats of violence.

The abuse can be perpetrated by males or females, and children or adults. It can be a one-off occurrence or a series of incidents over time, and range from opportunistic to complex organised abuse.

The victim can be exploited even when the activity appears to be consensual. Children or young people who are being sexually exploited may not understand that they are being abused. They often trust their abuser and may be tricked into believing they are in a loving, consensual relationship.

CSE can include both physical contact (penetrative and non-penetrative acts) and non-contact sexual activity. It can also happen online. For example, young people may be persuaded or forced to share sexually explicit images of themselves, have sexual conversations by text, or take part in sexual activities using a webcam. CSE may also occur without the victim's immediate knowledge, for example through others copying videos or images.

If a member of staff suspects CSE, they will discuss this with the DSL. The DSL will trigger the local safeguarding procedures, including a referral to the Local Authority's children's social care team and the police, if appropriate.

Domestic Abuse: Children can witness and be adversely affected by domestic abuse and/or violence at home where it occurs between family members. In some cases, a child may blame themselves for the

abuse or may have had to leave the family home as a result.

Exposure to domestic abuse and/or violence can have a serious, long-lasting emotional and psychological impact on children. If police are called to an incident of domestic abuse and any children in the household have experienced the incident, the police will inform the key adult in school (usually the designated safeguarding lead) before the child or children arrive at school the following day. The DSL will provide support according to the child's needs and update records about their circumstances.

Homelessness: Being homeless or being at risk of becoming homeless presents a real risk to a child's welfare.

The DSL will be aware of contact details and referral routes into the local housing authority so they can raise concerns at the earliest opportunity (where appropriate and in accordance with local procedures).

Where a child has been harmed or is at risk of harm, the DSL will also make a referral to children's social care.

So-called 'honour-based' abuse (including FGM and forced marriage): So-called 'honour-based' abuse (HBA) encompasses incidents or crimes committed to protect or defend the honour of the family and/or community, including FGM, forced marriage, and practices such as breast ironing.

Abuse committed in this context often involves a wider network of family or community pressure and can include multiple perpetrators.

All forms of HBA are abuse and will be handled and escalated as such. All staff will be alert to the possibility of a child being at risk of HBA or already having suffered it. If staff have a concern, they will speak to the DSL, who will activate local safeguarding procedures.

FGM: The DSL will make sure that staff have access to appropriate training to equip them to be alert to children affected by FGM or at risk of FGM.

Section 9.3 of this policy sets out the procedures to be followed if a staff member discovers that an act of FGM appears to have been carried out or suspects that a pupil is at risk of FGM.

Indicators that FGM has already occurred include:

- A pupil confiding in a professional that FGM has taken place
- A mother/family member disclosing that FGM has been carried out
- A family/pupil already being known to social services in relation to other safeguarding issues
- A girl:
 - Having difficulty walking, sitting or standing, or looking uncomfortable
 - Finding it hard to sit still for long periods of time (where this was not a problem previously)
 - Spending longer than normal in the bathroom or toilet due to difficulties urinating
 - Having frequent urinary, menstrual or stomach problems
 - Avoiding physical exercise or missing PE
 - Being repeatedly absent from school, or absent for a prolonged period
 - Demonstrating increased emotional and psychological needs - for example, withdrawal or depression, or significant change in behaviour

- Being reluctant to undergo any medical examinations
- Asking for help, but not being explicit about the problem
- Talking about pain or discomfort between her legs

Potential signs that a pupil may be at risk of FGM include:

- The girl's family having a history of practicing FGM (this is the biggest risk factor to consider)
- FGM being known to be practices in the girl's community or country of origin
- A parent or family member expressing concern that FGM may be carried out
- A family not engaging with professionals (health, education or other) or already being known to social care in relation to other safeguarding issues
- A girl:
 - Having a mother, older sibling or cousin who has undergone FGM
 - Having limited level of integration within UK society
 - Confiding that she is to have a 'special procedure' or to attend a special occasion to 'become a woman'
 - Talking about a long holiday to her country of origin or another country where the practice is prevalent, or parents stating that they or a relative will take the girl out of the country for a prolonged period
 - Requesting help from a teacher or another adult because she is aware or suspects that she is at immediate risk of FGM
 - Talking about FGM in conversation – for example, a girl may tell other children about it (although it is important to take into account the context of the discussion)
 - Being unexpectedly absent from school
 - Having sections missing from her 'red book' (child health record) and/or attending a travel clinic or equivalent for vaccinations/anti-malarial medication

The above indicators and risk factors are not intended to be exhaustive.

Preventing Radicalisation

Radicalisation refers to the process by which a person comes to support terrorism and extremist ideologies associated with terrorist groups.

Extremism is vocal or active opposition to fundamental British values, such as democracy, the rule of law, individual liberty, and mutual respect and tolerance of different faiths and beliefs. This also includes calling for the death of members of the armed forces.

Terrorism is an action that:

- Endangers or causes serious violence to a person/people;

- Causes serious damage to property; or
- Seriously interferes or disrupts an electronic system

The use or threat of terrorism must be designed to influence the government or to intimidate the public and is made for the purpose of advancing a political, religious or ideological cause.

Schools have a duty to prevent children from being drawn into terrorism. The DSL will undertake Prevent awareness training and make sure that staff have access to appropriate training to equip them to identify children at risk.

We will assess the risk of children in our school being drawn into terrorism. This assessment will be based on an understanding of the potential risk in our local area, in collaboration with our local safeguarding partners and local police force.

We will ensure that suitable internet filtering is in place, and equip our pupils to stay safe online at school and at home.

There is no single way of identifying an individual who is likely to be susceptible to an extremist ideology. Radicalisation can occur quickly or over a long period.

Staff will be alert to changes in pupils' behaviour.

The government website [Educate Against Hate](#) and charity [NSPCC](#) say that signs that a pupil is being radicalised can include:

- Refusal to engage with, or becoming abusive to, peers who are different from themselves
- Becoming susceptible to conspiracy theories and feelings of persecution
- Changes in friendship groups and appearance
- Rejecting activities they used to enjoy
- Converting to a new religion
- Isolating themselves from family and friends
- Talking as if from a scripted speech
- An unwillingness or inability to discuss their views
- A sudden disrespectful attitude towards others
- Increased levels of anger
- Increased secretiveness, especially around internet use
- Expressions of sympathy for extremist ideologies and groups, or justification of their actions
- Accessing extremist material online, including on Facebook or X (Twitter)
- Possessing extremist literature
- Being in contact with extremist recruiters and joining, or seeking to join, extremist organisations

Children who are at risk of radicalisation may have low self-esteem, or be victims of bullying or discrimination. It is important to note that these signs can also be part of normal teenage behaviour – staff should have confidence in their instincts and seek advice if something feels wrong.

If staff are concerned about a pupil, they will follow our procedures set out in section 9.5 of this policy, including discussing their concerns with the DSL.

Staff should **always** take action if they are worried.

Child on Child abuse

Child on Child abuse is when children abuse other children. This type of abuse can take place inside and outside of school and online.

Child on Child abuse is most likely to include, but may not be limited to:

- Bullying (including cyber-bullying, prejudice-based and discriminatory bullying)
- Abuse in intimate personal relationships between peers
- Physical abuse such as hitting, kicking, shaking, biting, hair pulling, or otherwise causing physical harm (this may include an online element which facilitates, threatens and/or encourages physical abuse)
- Sexual violence, such as rape, assault by penetration and sexual assault (this may include an online element which facilitates, threatens and/or encourages sexual violence)
- Sexual harassment, such as sexual comments, remarks, jokes and online sexual harassment, which may be standalone or part of a broader pattern of abuse
- Causing someone to engage in sexual activity without consent, such as forcing someone to strip, touch themselves sexually, or to engage in sexual activity with a third party
- Consensual and non-consensual sharing of nudes and semi nudes images and/or videos (also known as sexting or youth produced sexual imagery)
- Upskirting, which typically taking a picture under a person's clothing without their permission, with the intention of viewing their genitals or buttocks to obtain sexual gratification, or cause the victim humiliation, distress or alarm
- Initiation/hazing type violence and rituals (this could include activities involving harassment, abuse or humiliation used as a way of initiating a person into a group and may also include an online element)

Where children abuse their peers online, this can take the form of, for example, abusive, harassing, and misogynistic messages; the non-consensual sharing of indecent images, especially around chat groups; and the sharing of abusive images and pornography, to those who don't want to receive such content.

If staff have any concerns about Child on Child abuse, or a child makes a report to them, they will follow the procedures set out in this policy, as appropriate.

Sexual Violence and Sexual Harassment between Children in Schools

Sexual violence and sexual harassment can occur:

- Between 2 children of any age and sex
- Through a group of children sexually assaulting or sexually harassing a single child or group of children
- Online and face to face (both physically and verbally)

Sexual violence and sexual harassment exist on a continuum and may overlap.

Children who are victims of sexual violence and sexual harassment will likely find the experience stressful and distressing. This will, in all likelihood, adversely affect their educational attainment and will be exacerbated if the alleged perpetrator(s) attends the same school.

If a victim reports an incident, it is essential that staff make sure they are reassured that they are being taken seriously and that they will be supported and kept safe. A victim should never be given the impression that they are creating a problem by reporting sexual violence or sexual harassment. Nor should a victim ever be made to feel ashamed for making a report.

Some groups are potentially more at risk. Evidence shows that girls, children with SEN and/or disabilities, and lesbian, gay, bisexual and transgender (LGBT) children are at greater risk.

Staff should be aware of the importance of:

- Challenging inappropriate behaviours
- Making clear that sexual violence and sexual harassment is not acceptable, will never be tolerated and is not an inevitable part of growing up
- Challenging physical behaviours (potentially criminal in nature), such as grabbing bottoms, breasts and genitalia, pulling down trousers, flicking bras and lifting up skirts. Dismissing or tolerating such behaviours risks normalising them

If staff have any concerns about sexual violence or sexual harassment, or a child makes a report to them, they will follow the procedures set out in section 9 of this policy, as appropriate. In particular, section 9.8 and 9.9 set out more detail about our school's approach to this type of abuse.

Serious Violence

Indicators which may signal that a child is at risk from, or involved with, serious violent crime may include:

- Increased absence from school
- Change in friendships or relationships with older individuals or groups
- Significant decline in performance
- Signs of self-harm or a significant change in wellbeing
- Signs of assault or unexplained injuries
- Unexplained gifts or new possessions (this could indicate that the child has been approached by, or is involved with, individuals associated with criminal networks or gangs and may be at risk of criminal exploitation (see above)

Risk factors which increase the likelihood of involvement in serious violence include:

- Being male
- Having been frequently absent or permanently excluded from school
- Having experienced child maltreatment
- Having been involved in offending, such as theft or robbery

Staff will be aware of these indicators and risk factors. If a member of staff has a concern about a pupil being involved in, or at risk of, serious violence, they will report this to the DSL.

Checking the Identity and Suitability of Visitors

All visitors will be required to verify their identity to the satisfaction of staff. Visitors should be ready to produce identification.

Visitors are expected to sign in using the school's sign in system (digital system/book) and wear a visitors

badge/lanyard.

Visitors to the school who are visiting for a professional purpose, such as educational psychologists and school improvement officers, will be asked to show photo ID and:

- may be asked to show their DBS certificate, which will be checked alongside their photo ID; or
- The organisation sending the professional, such as the Local Authority or educational psychology service, will provide prior written confirmation that an enhanced DBS check with barred list information has been carried out

All other visitors, including visiting speakers, will be accompanied by a member of staff at all times. We will not invite into the school any speaker who is known to disseminate extremist views, and will carry out appropriate checks to ensure that any individual or organisation using school facilities is not seeking to disseminate extremist views or radicalise pupils or staff.

Non-Collection of Children: If a child is not collected at the end of the session/day, we will:

- Telephone each of the people named in the data collection sheet
- Leave messages if no one is immediately contactable Use our After School (ASC) provision
- Use our knowledge of families to ascertain a possible safe place Stay with the child
- Telephone social services

If the incident is a one-off occurrence, the parent will be spoken to by the DSL. If an incident happens again, the incident will be recorded using the safeguarding form. A meeting during the working day will be arranged between the DSL and parent/carer and support offered as appropriate.

Child Missing Education: Our procedures are in line with those established by the Local Authorities and are designed to ensure that a missing child is found and returned to effective supervision as soon as possible. View the Local Authority, Luton: [Children Missing Education Policy and Procedures](#) and for Bedford: [Child Missing Education Procedures 2025](#).

The purpose of the Child Missing Education Procedures (2018) is to establish a set of principles which all agencies can subscribe to and is underpinned by Luton Children's and Young People's Plan, to ensure Luton Borough Council:

- Is able to fulfil its statutory duty to provide an education for all children of compulsory school age;
- Is able to locate, assess, monitor and track children and young people missing from education in order for them to reach their full potential;
- Identifies those at risk of becoming missing from education and accordingly allocates appropriate staff to intervene. Maintains contact with those missing from education and those at risk of becoming so.
- Ensure their responsibility is to be carried out through a strategic and multi-agency framework where all agencies share information on the identification of children and young people missing education.

Possible missing children/notification off roll referral: [CME Referral Portal](#)