



**Gravesend**  
Grammar School

Working at Gravesend Grammar School

# Join our Team

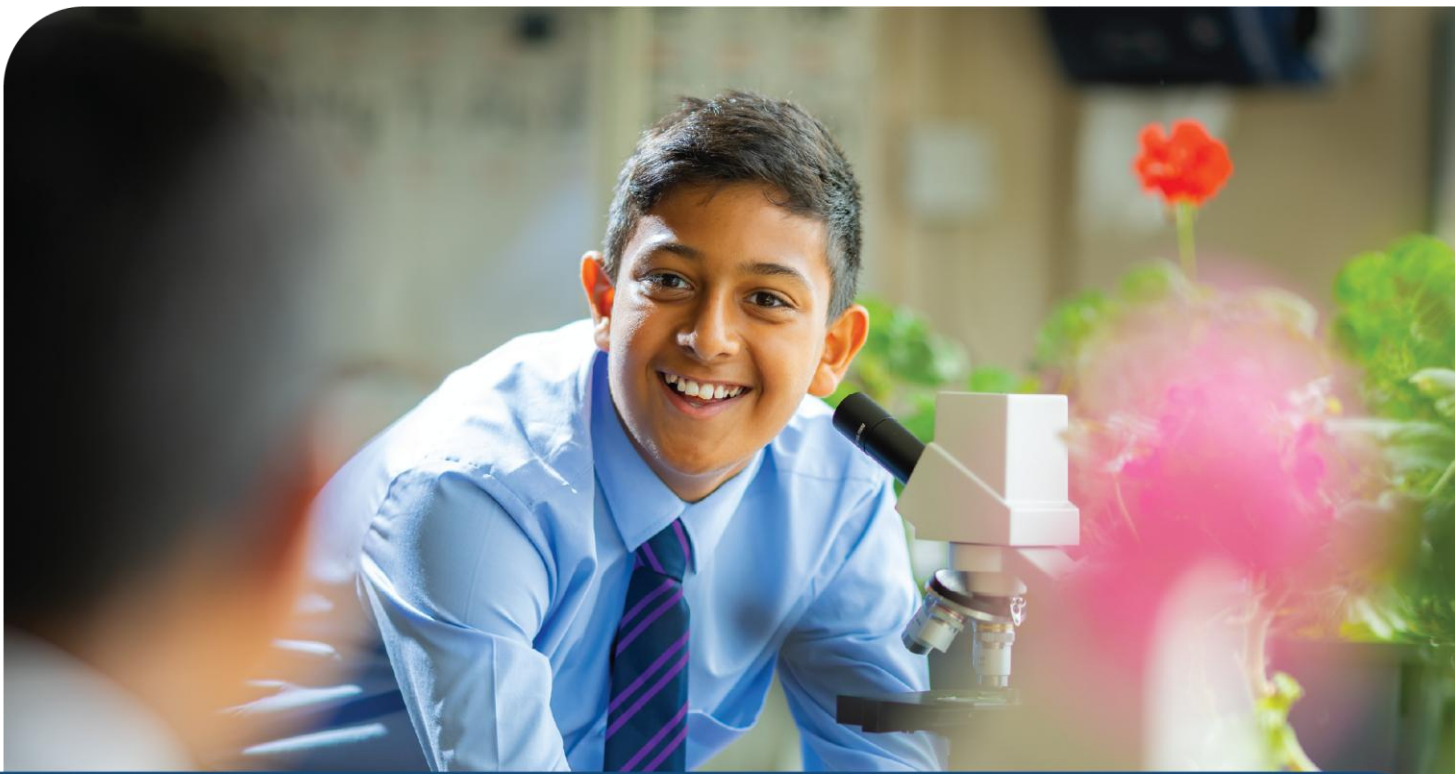


**For appointment of:**

**Subject Leader of Drama  
(Maternity Cover)**



PROUD TO BE  
**Aletheia**  
Academies Trust



## Headteacher Welcome

Mr Malcolm Moaby

Thank you for your interest in the role at Gravesend Grammar School. I hope that what you read will encourage you to apply to be part of our team.

I am incredibly proud to be the Headteacher of Gravesend Grammar School. Having spent many years here as both a teacher and a leader, I am deeply committed to ensuring that our traditional values are preserved in a modern context.

While academic excellence is at the core of our mission, I believe that a rich and diverse curriculum is equally important in fostering well-rounded individuals. This balance enables our students to confidently navigate the next phase of their lives, complementing the demands of a rigorous academic program.

Our goal is clear: we strive to help every student progress and achieve success in life, while offering opportunities for teachers and support staff to excel and grow within their roles.

As a selective school we are fortunate to be educating students who have high aspirations and have a strong commitment and loyalty to the School. In return, we provide a high quality learning environment with opportunities and challenges for all of our students both within and beyond the curriculum.

We offer a positive learning atmosphere, a network of supportive colleagues, and a comprehensive professional development program.

I look forward to receiving your application.

**Consule Cunctis - take thought for everyone**



# About Gravesend Grammar School



Gravesend Grammar School, established in 1893, is a prestigious and highly respected institution with a long-standing tradition of academic excellence. Situated in Gravesend, Kent, the school has consistently delivered exceptional education to generations of students, fostering a learning environment that is both challenging and supportive. With a focus on both academic achievement and personal development, Gravesend Grammar School offers a broad and balanced curriculum, enriched by a wide range of extracurricular activities that allow students to explore their passions and talents. The school's dedicated and highly skilled staff are committed to providing high-quality teaching, nurturing each student's potential, and ensuring that they are well-prepared for future success.

Our vision is to provide students with challenges and opportunities that will equip them with the qualifications, skills, and personal attributes necessary for success in later life. We offer an ambitious and rigorous curriculum that fosters high academic aspirations for all students. Our expert teachers design engaging lessons that develop both subject knowledge and essential skills, empowering students to reach their full potential as they progress through their education.

Beyond academics, we aim to provide a wealth of opportunities that encourage students to explore their interests, build confidence, and foster a strong sense of community and belonging. Our extensive extracurricular programme is an essential part of this, and we value and recognize hard work and effort both within and beyond the classroom. The Parthenon and Milton Award schemes celebrate students' dedication and achievements, highlighting their growth and contributions to the school.

At the heart of our school is a commitment to the well-being and pastoral support of every student. We strive to build positive, supportive relationships where students feel safe, happy, and respected. Our aim is to create an environment where all students can thrive, seek guidance when needed, and feel valued as members of our community.

At Gravesend Grammar School, we prioritise the well-being and pastoral support of every student. We build positive, respectful relationships, ensuring that students feel safe, happy, and supported in an environment where they can thrive. Our school motto, *Consule Cunctis* – "take thought for everyone" – reflects our commitment to mutual respect and courtesy. The school's core values, or Pillars of Success, guide our efforts to help each student become the best version of themselves, preparing them for success in both their academic and personal lives.



"Pupils are highly respectful of each other, courteous and polite. Relationships between staff and pupils are exceptionally positive, which leads to very strong attitudes to learning. This is reflected in their excellent attendance". **Ofsted 2025**

# Staff Benefits



We value every one of our employees and want to give back as much as possible. To show our appreciation, we offer a range of perks and benefits as outlined below:



Trust-wide commitment to your ongoing Continuous Professional Development (CPD) including secondment opportunities.



Unlimited access for you and your family to 24/7 GP telephone consultations.



Enhanced annual leave allowance with term-time offerings.



Access to a wide array of discounts including Motorfinity, Kent Rewards and Blue Light Card.



Access to mental health and wellbeing support including counselling, mindfulness and physiotherapy sessions.



Access to Local Government and Teachers' Pensions Schemes.



Free eye test, examinations and eye care vouchers.

For a full range of what Aletheia Academies Trust offer, please scan:



# Job Description

<b>Job Title</b>	Subject Leader of Drama
<b>Location</b>	Gravesend Grammar School
<b>Duration</b>	Temporary- Maternity Cover
<b>Work Hours</b>	Full-time
<b>Reporting to</b>	Link Senior Leader for Drama
<b>Salary</b>	MPS/UPS plus TLR (Dependent on experience)
<b>Pension</b>	Teachers' Pension Scheme
<b>Start date</b>	2 <sup>nd</sup> November 2026



## About the Role

Gravesend Grammar School is seeking to appoint an excellent middle leader who is an inspiring, dynamic and innovative Drama practitioner and teacher. The role will see the successful candidate lead both teachers and support staff and work collaboratively with other creative departments.

Alongside teaching and overseeing all areas of Key Stage 3, GCSE and A Level Theatre Studies, the successful candidate will have a strong desire to expand the department further and achieve outstanding exam results.

There is currently a strong drama tradition at Gravesend Grammar School and we are keen to ensure that the person appointed will promote the Drama Curriculum to enhance the lives of all our students, promoting a lifelong passion for the Arts. Expectations are that productions will continue to be of the highest quality, adding depth, breadth and insight to every student's education.

The role requires a strong commitment to extracurricular drama and the ability to coordinate production teams effectively. Gravesend Grammar School has a purpose built teaching space as well as a large school hall equipped with lighting, sound and portable staging. This includes a storage space for props and costume wardrobe with a wide range of resources.



## Job Purpose

To facilitate and encourage learning which enables students to achieve high standards in Drama; to share and support the corporate responsibility for the well-being, education and discipline of all students. To inspire creativity, confidence and self-expression, enabling students to develop both their practical and theoretical understanding of drama and performance.

## Accountabilities

- Prepare and teach Drama lessons of a high standard to the students assigned to them

## Actions

- Following designated programmes of study and schemes of work in Drama.
- Planning and delivering engaging lessons that develop students' practical performance skills, creativity, theatrical knowledge and appreciation of the performing arts.
- Carrying out the necessary assessments, including practical and written assessments, in line with departmental and examination board requirements.
- Providing information and comments for reports and student records.
- Monitoring students in accordance with agreed departmental strategies to ensure progress and achievement.
- Maintaining discipline in accordance with school policies and demonstrating good practice in the classes taught with regard to attendance, appearance, uniform, punctuality, behaviour and homework.
- Contributing to the corporate tasks of curriculum development, record keeping, monitoring and evaluation of lessons, and maintenance of resources, costumes, props and technical equipment.
- Participating in the implementation of the departmental homework policy, including setting, marking and monitoring homework.
- Working closely with and consulting colleagues within Drama and across other curriculum areas, ensuring continuity and progression for students.
- Supporting and contributing to school productions, performances, showcases and other extra-curricular opportunities that enrich students' experiences.
- Engaging in continuous professional self-development in relevant areas of Drama education and the performing arts.

We believe that the study of Drama should provide our students with both an independence of mind and the confidence, creativity and communication skills essential for their future lives. In the future, we see ourselves taking the department and the students forward, both in terms of attainment and outcomes, extra-curricular activities, innovation and challenge, and also in developing those wider skills within our students that the study of Drama allows us to explore.





	E	D
<b>Qualifications and Experience</b>		
Qualified Teacher Status	E	
Degree/Qualification in Drama or Theatre studies	E	
Proven ability as an excellent Classroom teacher	E	
Evidence of continuous professional development		D
Evidence of delivering strong outcomes for all pupils	E	
<b>Skills and Knowledge</b>		
Principles and practices of effective teaching and learning	E	
Preparation of schemes of work and lessons	E	
Knowledge and understanding of subject area(s)	E	
Principles and practices of monitoring/assessment/evaluation	E	
The application of ICT to teaching and learning in subject area(s)	E	

## Personal Qualities

- The ability to command respect from others.
- Ability to build and sustain effective working relationships with a range of stakeholders and external partners.
- Ability to demonstrate enthusiasm and sensitivity while working with others.
- Ability to make considered decisions.
- Be creative, flexible, and innovative.
- Promote a well-reasoned educational philosophy in relation to the school ethos.
- Be encouraging and supportive in the development of others.
- Be emotionally self-aware.
- Have high personal aspirations and inspire the same in all members of the school community.
- Demonstrate a high level of integrity, honesty and fairness.
- Readiness to reflect on, evaluate and improve practice and to hold self and others to account.
- Humour, warmth and energy.

All Essential Criteria

E = Essential

D = Desirable

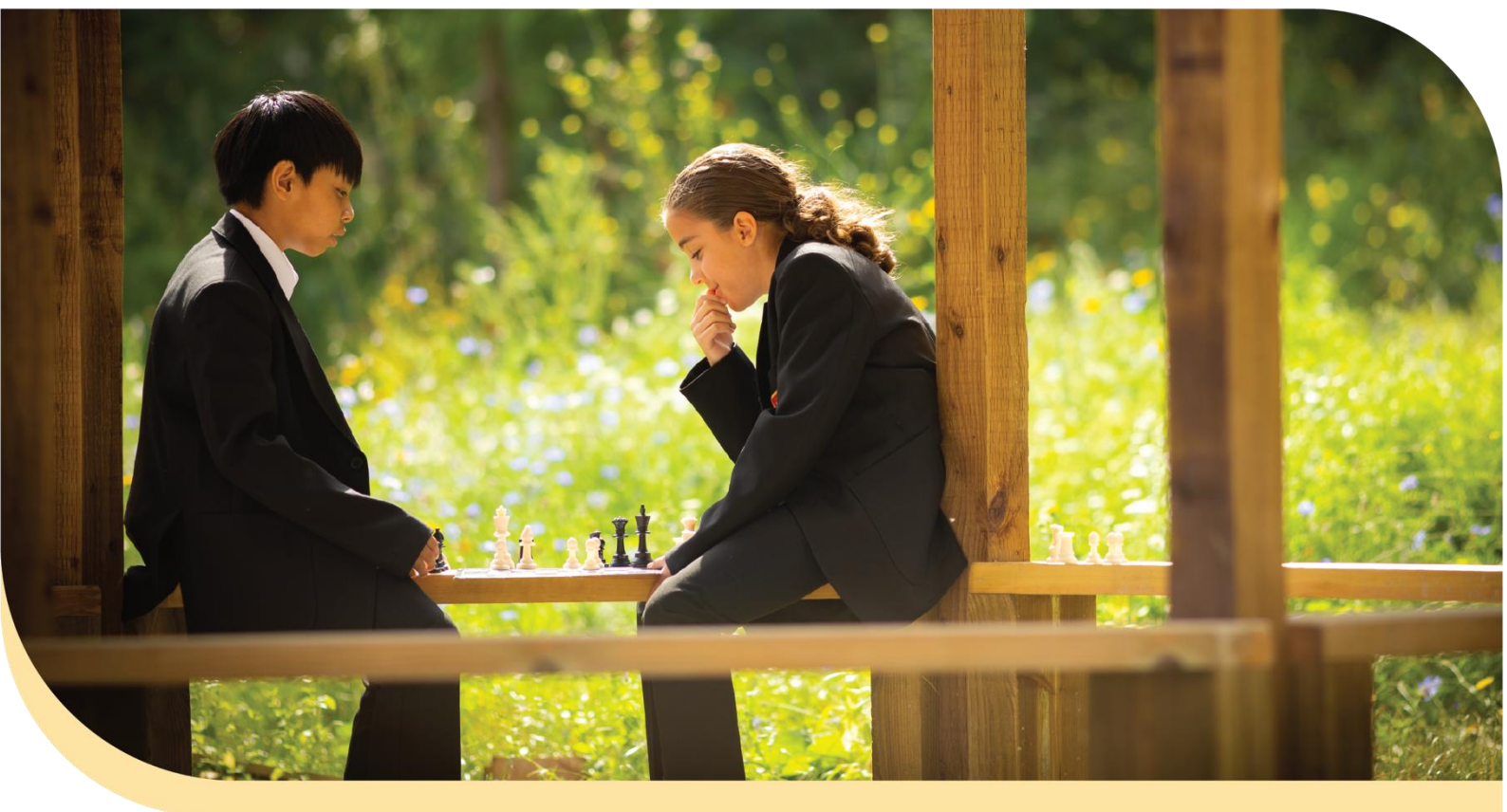
# How to Apply



If you are excited by this role and believe you have the values, vision, and expertise to lead our school through this exciting period of development, then we would love to hear from you.

**Jo Barker-Platt, Director of People and Culture**  
[HR@aletheiastrust.org.uk](mailto:HR@aletheiastrust.org.uk)  
01474 533 082.

**[To apply for this role, please visit MyNewTerm](#)**



Aletheia Academies Trust is committed to safeguarding and promoting the welfare of children and young people and expects all staff, volunteers and governors to share this commitment. All successful candidates will be subject to an enhanced DBS check along with other relevant employment checks, including overseas criminal background checks where applicable. Our policy statement on the recruitment of ex offenders can be found on our website. All new employees, volunteers and governors will be required to undertake safeguarding training on induction which will be regularly updated in line with statutory guidance.

Please click here to view: [Our Trust policies](#) or [Our recruitment of Ex-Offenders policy](#).



PROUD TO BE  
**Aletheia**  
Academies Trust

# Contact Us

## Gravesend Grammar School

Church Walk,  
Gravesend, Kent  
DA12 2PR

## Unique Reference Number:

137099

## Telephone:

01474 331 893

## Website:

[Gravesendgrammar.com](http://Gravesendgrammar.com)

## Email:

[HR@aletheiaacademies.org.uk](mailto:HR@aletheiaacademies.org.uk)