



Severn Bridges
Multi-Academy Trust

Mount Pleasant Primary School
Class Teacher (Maternity Cover) – EYFS
Recruitment Pack



Severn Bridges Multi-Academy Trust Mount Pleasant Primary School

**Class Teacher – EYFS
Recruitment Pack**



CONTENTS

- **About our school**
- **Welcome to our MAT**
- **About the role**
- **Class Teacher – EYFS**
- **How to Apply**
- **Class Teacher – EYFS Job Description**
- **Class Teacher – EYFS Person Specification**



Mount Pleasant Primary School

Class Teacher – EYFS

About our School

Headteacher's Welcome

Mount Pleasant Primary School and EYFS is a wonderful place to work and learn. It's a place where children thrive.

We are lucky to have excellent facilities which we make the most of, especially our outdoor provision and Forest School area, which is the envy of many other local schools!

Visitors find a happy and purposeful learning environment where children's level of engagement in their learning is high, as are our expectations of them. We have a fantastic team of staff who are dedicated to achieving the best outcomes for our pupils in all areas – not just in academic performance. We strive to develop our pupils' knowledge and skills across the curriculum and to support them to become resilient, thoughtful, creative and independent – preparing them for life. We are constantly seeking to develop and improve, to ensure that we are delivering the best possible opportunities for our pupils. We work closely with pupils, parents, governors and colleagues in the other two schools in our Multi-Academy Trust to ensure that we keep this at the forefront of everything we do.

We work hard here but we also have a lot of fun. I am proud to be Head of such a super school.

Alison Bengel (Headteacher)

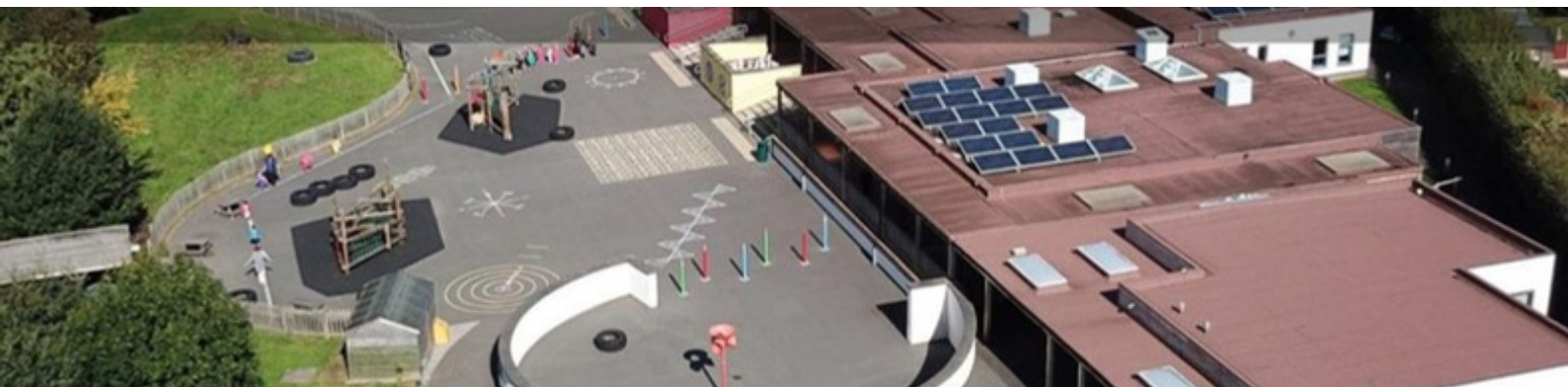
Pupils' Welcome

Welcome to our extraordinary school where children have fun and learn every day.

During our school day we are together learning the most important things in life whilst still having the best time. You will be amazed by our wonderful forest school area and outdoor learning spaces. We have fantastic teachers and hardworking pupils at our school who are all happy to spend their time at Mount Pleasant every day. We work as a team to follow the 'The Mount Pleasant Way' and make our school a happy environment to be in. There is an after school club called 'Twilight' and lots of other fun clubs you can go to.

We are extremely proud to be part of this brilliant school.

Mount Pleasant School Council – September 2019.



Mount Pleasant Primary School Class Teacher – EYFS



Welcome to our MAT

Severn Bridges Multi-Academy Trust provides a secure and welcoming environment for our children and staff.

We value each child as a unique individual and seek to nurture and support them to become positive, well balanced people equipped for their next steps in life.

Our curriculum is balanced and inclusive, helping every child to achieve the highest academic standards possible, while developing their individual skills, talents and attributes.

The holistic approach of our Darwin Growth Curriculum supports this and encourages non-academic success and extra-curricular opportunities.

We are fully committed to quickly identifying children's barriers to learning and offering first rate support to children with additional needs. We value and celebrate diversity and offer equitable opportunities for all, ensuring children are happy and well motivated.

As a close knit family of schools we work in partnership towards our shared vision; learning from each other and sharing good practice, while celebrating each school's uniqueness and contribution to its own community.



Severn Bridges
Multi-Academy Trust



Greenfields
Primary School



Mount Pleasant
Primary School & Nursery



Radbrook
Primary School



Sundorne
Infant School & Nursery



Harlescott
Junior School

Mount Pleasant Primary School

Class Teacher – EYFS

About the Role

Our children, parents and staff are so proud of our school and its community.

If you want to be a part of something exciting and special, then please get in touch.

We are seeking to appoint an ambitious teacher with a passion to provide the very best possible education in order for our fantastic EYFS children to thrive in our setting.

We strive to develop our pupils' skills across the early years curriculum and to support them to become resilient, thoughtful, creative and independent – preparing them for life. We value kindness, a strong work ethic and a positive attitude to inspire a happy workplace.

We want team players who will provide a rich curriculum, create exciting enrichment opportunities and build meaningful relationships, caring about everybody.

We work hard here but we also have a lot of fun.



Mount Pleasant Primary School Class Teacher – EYFS

The Post: Class Teacher – EYFS

Contract Type: Maternity leave cover

Contract: 5 days a week – Monday – Friday

Work Base: Mount Pleasant Primary School, Shrewsbury

Required : September 2026 – July 2027

Closing Date: Friday 8th May 2026

Interviews: Monday 18th May 2026



Salary

MPS 1 – 6 £32916.00 – £45352.00
Temporary (Maternity cover)
5 days a week Monday – Friday

Equal Opportunities

Severn Bridges Multi-Academy Trust is an Equal Opportunities Employer. Applications are welcome from suitably qualified candidates regardless of race, colour, nationality, ethnic or national origin, age, marital status, sex, sexual orientation or disability.

Safeguarding

The Severn Bridges Multi-Academy Trust is committed to safeguarding and promoting the welfare of children, and expect all staff and volunteers to share the same commitment. This post is exempt from the Rehabilitation of Offenders Act 1974; pre-employment checks will be carried out, references will be sought and successful candidates will be subject to an enhanced DBS check and other relevant checks with statutory bodies. Should you be shortlisted, further information relating to criminal records, sanctions and disqualifications will be requested and discussed at interview.

How to apply

All applications should be made online through MYNEWTERM. Please refer to the vacancy page on the school website www.mountpleasant.shropshire.sch.uk and click onto the vacancy where you will be able to apply directly.

Sorry but CVs will not be accepted.

Applicants are welcome to come and visit the school to see what we're all about. Please telephone or email the school to book your visit. The phone number is 01743 249135 and email address is

admin@mountpleasantsbmat.com

Mount Pleasant Primary School

Class Teacher – EYFS

Job Description

Details of the Post

Post title: Class Teacher – EYFS

Salary: MPS 1 – 6 £32916.00 – £45352.00

Hours: Part Time – 5 Days Monday – Friday

Location: Mount Pleasant Primary School

Principle Duties and Responsibilities

- To carry out duties of a school teacher, responsible to the Headteacher, as set out in the 'School Teachers' Pay and Conditions Document;
- To continue to meet the required standards for Qualified Teacher Status;
- To uphold the 'Teachers' Standards' at all times;
- To be committed to the education, well-being and safeguarding of the pupils in the school;
- To teach consistently good/outstanding exciting lessons across the curriculum, with high expectations of all – indoors and outdoors;
- To lead and manage one or more teaching assistants in the classroom;
- To lead on one or two curriculum subjects (not if you are a first year ECT but you will shadow a subject);
- To meet the individual needs of all pupils including those with SEND and those in receipt of the Pupil Premium and be familiar with the code of practice to identify and support children with special needs (children of high ability as well as those with learning, physical or behaviour problems), in accordance with school policies;
- To assist with target-setting for pupils and assess progress accurately;
- To plan pupils' work and mark/assess outcomes in line with school policies;
- To undertake such reasonable activities as the Headteacher and governors may, from time to time, require;
- To liaise with parents/carers to ensure pupils enjoy and achieve;
- To work with other members of staff and professionals to provide care, support for and safeguarding vulnerable pupils;
- Maintain complete confidentiality and loyalty to the school.

Mount Pleasant Primary School

Class Teacher – EYFS

Job Description

Planning, teaching and class management

- To be in the classroom every morning to receive children and to collect children from the playground after each break; ensure that the class is not left unattended at any time and ensure a safe and secure 'handover' at the end of every day.
- To teach consistently good/outstanding effective lessons across the curriculum that build on knowledge and skills via our MAT Connected Curriculum.
- Use ICT effectively (and safely) to encourage and support learning – to include updating the Google Classroom / webpage / School Facebook contributions.
- Plan and deliver in relation to the Desirable Outcomes, National Curriculum and the Agreed Syllabus for Religious Education with regard for the school's aim statement, own policies and schemes of work, the teaching programme for all children within the class.
- To maintain and promote a stimulating environment which reflects respect for children and their work and which promotes enquiry, activity and successful learning;
- Ensure effective teaching of whole classes, groups and individuals, establishing high expectations of behaviour and attainment so enable teaching objectives to be met, mindful of metacognitive techniques but also mindful of cognitive overload;
- To develop a calm, caring and secure classroom atmosphere for the children and with them so that they know they are respected and where their self-esteem is developed;
- Make effective use of assessment information on pupils' attainment and progress and in planning future lessons.
- Evaluate your own teaching critically to improve effectiveness.
- Support the professional growth of any support staff that work in your classroom.

Monitoring, Assessment, Recording, Reporting and Accountability

- Assess and record each pupil's progress systematically with reference to the schools current practice, including the social progress of each child and use the results to inform planning.
- Mark and monitor classwork and homework, providing constructive feedback and setting targets for future progress.
- Provide reports on individual progress to the Headteacher and parents as required.

Mount Pleasant Primary School

Class Teacher – EYFS

Job Description

Other Professional & Personal Requirements

- Establish and maintain effective professional relationships with colleagues and parents.
- Participate as required in meetings with professional colleagues and parents in respect of the duties and responsibilities of the position.
- Be aware of the need to take responsibility for your own professional development.
- Support the development of the school as a learning environment by participating in decision making and by understanding and consistently applying agreed policies and decisions;
- Attend staff meetings and CPD courses, to update expertise through reading and to engage in professional research, discussion and debate;
- Liaise with colleagues to teach in a collaborative way;
- Share responsibilities for break duties, assemblies and whole school activities;
- Share responsibilities for maintaining positive whole school behaviour;
- Be aware of and comply with policies and procedures relating to child protection, health, safety and security, confidentiality and data protection, reporting all concerns to an appropriate person;
- Be aware of and support difference and ensure equal opportunities for all.
- Contribute to the overall ethos/work/aims of the Trust;
- Appreciate and support the role of other professionals;
- Attend and participate in relevant meetings as required;
- Be aware of and comply with safeguarding responsibilities as outlined in the Trust's Staff Code of Conduct and related policies and procedures;
- Data Protection and other statutory responsibilities;
- Be aware of and comply with data protection responsibilities as outlined in the Trust's Staff Code of Conduct and related policies and procedures.

Knowledge and Understanding

- Have knowledge of and keep up to date with the National Curriculum.
- Understand how pupils learning is affected by their physical, intellectual, emotional and social development and to understand the stages of child development.
- Select and make good use of IT skills for classroom and management support and the ability to use an Interactive Whiteboard (with a keen awareness of e-safety);

Mount Pleasant Primary School

Class Teacher – EYFS

Job Description

- Be familiar with the school's current systems and structures as outlined in policy documents including Health and Safety and Child Protection policies.
- Understand and know how national, local comparative and school data including national curriculum test data can be used to set clear targets for pupil's achievement.



Other Duties

Any other duties that the Headteacher, CEO/ Governing Body/ Trustees feel is commensurate with the post. Whilst every effort is made to explain the main duties and responsibilities of the post each individual task undertaken may not be identified.

Mount Pleasant Primary School

Class Teacher – EYFS

Person Specification

 Severn Bridges MAT 			
Person Specification – Class Teacher – Nursery			
	Essential	Desirable	Identified through
Qualifications	Qualified Teacher Status DBS check	Evidence of continuous INSET and commitment to further professional development	Application Form
Experience	Planning, teaching and assessing at EYFS stage.	<ul style="list-style-type: none"> Teaching in Nursery. Teaching across the whole Primary age range. Working in partnership with parents. 	Application form Letter of Application
Knowledge and understanding	<ul style="list-style-type: none"> The theory and practice of providing effectively for the individual needs of all children (e.g. classroom organisation and learning strategies). Statutory requirements at the appropriate key stage. The monitoring, assessment, recording and reporting of pupils' progress. The statutory requirements of legislation concerning Equal 	<ul style="list-style-type: none"> The preparation and administration of statutory National Curriculum tests/ optional tests. The links between schools, especially partner schools. Experience of planning for, 	Application Form Interview Observed Lesson Visit Task

Mount Pleasant Primary School

Class Teacher – EYFS

Person Specification – continued

	<p>Opportunities, Health & Safety, SEN and Child Protection.</p> <ul style="list-style-type: none">• The positive links necessary within school and with all its stakeholders.• Effective teaching and learning styles.	<p>delivering and scrutinising outcomes of assessments to enhance future learning.</p>	
Skills	<ul style="list-style-type: none">• Promote the school's aims positively, and use effective strategies to monitor motivation and morale.• Develop good personal relationships within a team.• Establish and develop close relationships with parents, governors and the community.• Communicate effectively (both orally and in writing) to a variety of audiences.• Create a happy, challenging and effective learning environment.	<ul style="list-style-type: none">• Develop strategies for creating community links.• Run an After School club eg. Sports or craft club.• Contribute to the wider life of school (e.g. supporting School Fairs etc).	<p>Application Form Letter of Application Interview</p>
Special Conditions	<p>Undertake and receive a satisfactory enhanced Disclosure and Barring Service (DBS) check. Have the right to work in the UK.</p>		