



QUEST TRUST

Supporting Young People from
Early Years to Employment



ST. JOHN'S

Church of England
Primary School, Abram



RECRUITMENT BROCHURE

St. John's C. of E. Primary
School, Abram



**St. John's C. of E.
Primary School, Abram**
Simpkin Street
Abram
Wigan, WN2 5QE





CONTENTS

- Message from Headteacher.....Page 04
- St. John's C. of E. Primary School, Abram.....Page 05
- Our CEOPage 06
- Our Vision.....Page 07
- Our Values.....Page 08
- QUEST TrustPage 12
- Our People.....Page 14
- What We Offer?.....Page 16
- Benefits.....Page 18
- Our Family.....Page 20
- Testimonials.....Page 22
- ContactPage 24



MESSAGE FROM HEADTEACHER

Thank you for your interest in joining St. John's Church of England Primary School, Abram.

At St. John's, we believe that the success of our school is built upon the dedication, passion and expertise of our staff. We are proud to be a welcoming and supportive school community where colleagues work together with a shared commitment to providing the very best opportunities for every child.

As part of QUEST Trust, we benefit from a strong culture of collaboration, professional development and continuous improvement. Staff have access to a wide range of opportunities to develop their skills, share best practice and grow professionally, supported by colleagues across the trust.

We are committed to creating a workplace where people feel valued, respected and empowered to make a difference. Whether you are at the start of your career or seeking your next challenge, you will find a team that is ambitious, supportive and dedicated to achieving excellence.

At St. John's, we recognise that outstanding education is made possible through positive relationships, high expectations and a collective commitment to improvement. We are always looking for talented individuals who share our passion for helping children succeed and reach their full potential.

Thank you for taking the time to learn more about our school. I look forward to welcoming the next member of the St. John's family.

Rachael Bear
Headteacher

ST. JOHN'S C. OF E. PRIMARY SCHOOL, ABRAM

St. John's Church of England Primary School, Abram is a welcoming and inclusive primary school located in the heart of the local community in Wigan. As part of QUEST Trust, we are committed to providing high quality education within a caring Christian environment where every child is encouraged to flourish.

Our Christian vision is inspired by the words of Matthew 5:14, "You are the light that gives light to the world." Through this message, we encourage children to recognise their unique gifts, shine with confidence and make a positive difference within their communities and beyond.

Rooted in our Christian values of hope, kindness, respect and responsibility, we strive to create a school where children feel safe, valued and inspired to achieve their very best. Strong partnerships with families, governors, the church and the wider community help create a culture of belonging and support.

Through a broad and engaging curriculum, enriched by a range of experiences beyond the classroom, pupils develop confidence, resilience and a lifelong love of learning. As part of QUEST Trust and its vision of Supporting Young People from Early Years to Employment, we help children build the knowledge, skills and aspirations needed for future success.

We are proud to be a school where faith, community and ambition come together, enabling every child to grow academically, socially and emotionally.





OUR CEO

I am delighted that you are considering joining the growing team at QUEST Trust. At QUEST, we believe education should be more than a pathway. It should inspire curiosity, build resilience and unlock every child’s potential. As a member of our team, you will play a vital role in creating nurturing, innovative and inclusive environments where children and young people flourish academically, emotionally and socially.

We are united by a shared vision to equip young people with the skills, confidence and character to thrive in life. Central to this is our commitment to Supporting Young People from Early Years to Employment, ensuring every child is prepared for both their next stage in education and their future careers. Every role across our Trust contributes to this mission and helps shape positive futures for the children and communities we serve.

At QUEST, strong relationships are at the heart of everything we do. We foster a culture built on respect, compassion and kindness, where staff feel valued, supported and empowered to grow professionally and personally. We are committed to creating workplaces where collaboration, wellbeing and professional development are prioritised, enabling our staff to thrive and make a meaningful difference every day.

Across our schools, children and young people benefit from meaningful opportunities to engage with the world of work. Through strong employer partnerships, workplace experiences, careers education and collaborative projects, we help bring learning to life and raise aspirations. Our staff play a key role in inspiring ambition, developing confidence and helping pupils recognise the opportunities available to them in the future.

We work closely with local businesses, colleges, universities and community organisations to provide real world context and meaningful experiences for our pupils. These partnerships strengthen learning, develop essential employability skills and ensure our schools remain connected to the communities they serve.

We know the best outcomes are achieved together. That is why we value the contribution of every colleague, alongside the support of parents, carers, employers and the wider community, in creating positive environments where every child can succeed and feel inspired about their future.

As we continue to grow, we remain committed to building great schools and providing exceptional opportunities for both pupils and staff. By joining QUEST, you will become part of a Trust dedicated to excellence, collaboration and transforming lives through education.

Marc Doyle
Chief Executive Officer

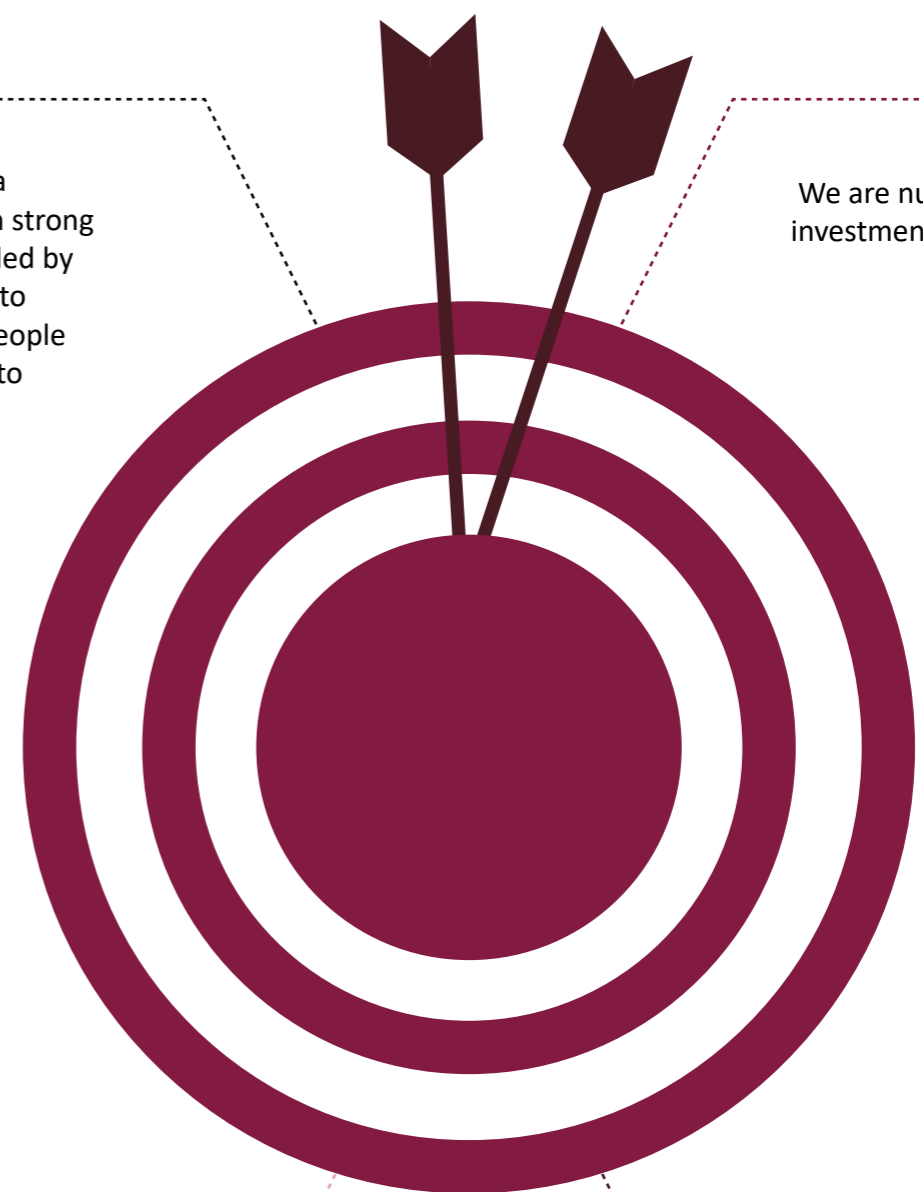
In setting the strategic plan and our goals for the next three years, we have established some key strategic objectives in terms of non-negotiables that are at the forefront of our work upon which our quality assurance and review systems will be tightly focused. Those key areas are:



We are building a United Trust with strong governance, guided by Christian values, to Support Young People from Early Years to Employment.



We are nurturing a culture of investment in our pupils, staff and buildings.



Developing strong accountability systems to improve the attendance, outcomes and experiences for our children, with a curriculum that meets the needs of all students, encourages them to come to school and helps them to achieve career aspirations.



We are building long-lasting partnerships to help our Trust grow.

OUR VISION



This guiding principle is woven throughout school life and reflects our commitment to helping every child recognise their unique gifts and potential. Through our Christian values of Hope, Kindness, Respect and Responsibility, we encourage children to shine with confidence, serve others with compassion and make a positive difference within their communities and beyond.

Our school vision is inspired by the words,
"You are the light that gives light to the world."
Matthew 5:14.



OUR VALUES



Kind

Small acts of kindness help us create a happy, welcoming school where everyone feels valued. Kindness is woven into daily life, from a helping hand to a thoughtful word.



Respectful

Respect guides all we do. We value everyone, promoting understanding and care so all feel seen and included. We model respectful relationships across our school community between pupils, staff, families, and visitors.



Hope

Rooted in our Christian ethos, we teach optimism and faith. Even in a challenge, children look ahead with confidence. We nurture a belief that every child can flourish, encouraging resilience and a positive mindset.



Responsible

Being responsible helps us learn, grow, and support others, building confidence and independence. We teach children to take ownership of their actions, choices, and learning. Responsibility means showing up, trying your best, and helping others do the same.



QUEST TRUST

QUEST Trust is a successful and growing multi academy trust serving children and young people across the North West. Established in 2014, the Trust is committed to delivering high quality education through a family of schools that place children, communities and opportunity at the heart of everything they do.

The Trust currently comprises primary, secondary and sixth form education, alongside nursery and childcare provisions, supporting more than 1,700 children and young people across Wigan and Bolton. Across all settings, QUEST is committed to creating safe, inclusive and ambitious learning environments where every child is encouraged to achieve their full potential.

Each school within the Trust has its own distinct identity, values and connection to its local community. While every setting is unique, all schools are united by a shared commitment to educational excellence, strong relationships and high expectations for pupils and staff alike.

Settings Within the Trust

- St Peter's C of E Primary School
- Hindley Green Community Primary School
- St John's C of E Primary School
- St John's C of E Primary School
- University Collegiate School
- Play Pals Childcare Limited

Central to the work of QUEST is the mission of Supporting Young People from Early Years to Employment. Through a broad and ambitious curriculum, enrichment opportunities and meaningful engagement with employers, colleges, universities and community partners, the Trust helps children and young people develop the knowledge, skills and confidence needed for future success.

Our strength lies in our relationships. We work closely with pupils, families, staff, businesses and the wider community to create strong partnerships that support every child and



young person throughout their educational journey. By working collaboratively, we are able to provide meaningful opportunities that raise aspirations, broaden horizons and help pupils make clear connections between education and future careers.

Across QUEST Trust, collaboration, inclusion and continuous improvement underpin our approach. Staff across all schools and provisions work together to share expertise, strengthen practice and deliver the very best outcomes for children and young people. We are committed to investing in our schools, staff and communities, ensuring every child has access to high quality education, meaningful experiences and the support they need to thrive.

As the Trust continues to grow, it remains focused on building strong schools, supporting local communities and creating environments where children and young people can flourish academically, socially and emotionally.





OUR PEOPLE

A core principle at QUEST Trust is Respectful Relationships where acting with care, integrity, and fairness is demonstrated within all our schools and the Central Team. We value each member of our professional community and value our health and wellbeing. Our Staff Charter sets a standard which we all seek to follow and an environment:



Teaching and learning are at the core of all our work. As a Trust, we currently employ over 200 staff across all our sites and provide educational and operational support through our dedicated Central Team.

Central Services

We ensure that our schools receive continuous consistent operational support through our centralised service teams. Our central services, including governance, school improvement, finance, HR, estates, compliance and policy, communication and marketing, CPD and IT support, continually work to support the efficient and effective running of our schools, enabling staff at school level to focus on delivering exceptional education to all children and young people.

“We are a united Trust with a common objective of Supporting Young People from Early Years to Employment with strong Christian values”

WHAT WE OFFER?

At QUEST Trust, we're building more than strong schools—we're nurturing a compassionate and united community where staff and students thrive. Rooted in our values, our mission is to Support Young People from Early Years to Employment, and we're looking for passionate people to help make that happen.

What We Offer

- Outstanding CPD and career progression
- Support from specialist leads and central services
- All schools rated Good by Ofsted
- A welcoming culture built on kindness and collaboration
- Discount at Play Pals Childcare Limited (Nursery and Wrap Around Care)
- Wellness Day - An additional day leave for you to spend time on your own wellness. A day to rest and recuperate, bringing your best selves back to work
- Opportunities to be creative and think outside the box
- Ongoing professional development and training

- A chance to truly impact children's lives every day
- Generous Pension scheme
- Family Friendly policies

See our benefits brochure for further details.

Our Core Values

- Loyalty
- Compassion
- Professionalism
- Respect
- Kindness
- Responsibility

These shape how we teach, lead, and work together.

Come be part of a Trust that's making a lasting difference—with purpose, unity, and heart.

Vacancies

Don't miss your chance to join our team. See our current vacancies on our website by scanning the QR Code below.

If you can't find a suitable vacancy right now, don't worry, there will be new opportunities available in the near future.



SCAN
HERE



BENEFITS

Trustees are totally committed to their employees in terms of wellbeing and opportunities for professional development and career progression, as well as opportunities to work across the Trust. They ensure that they experience both job satisfaction and high levels of wellbeing. There is a whole range of HR policies to support employee wellbeing and a range of staff benefits:

Opportunities to learn and grow

We are keen to develop our staff and offer extensive CPD opportunities to enhance their careers.

Flu Vaccination

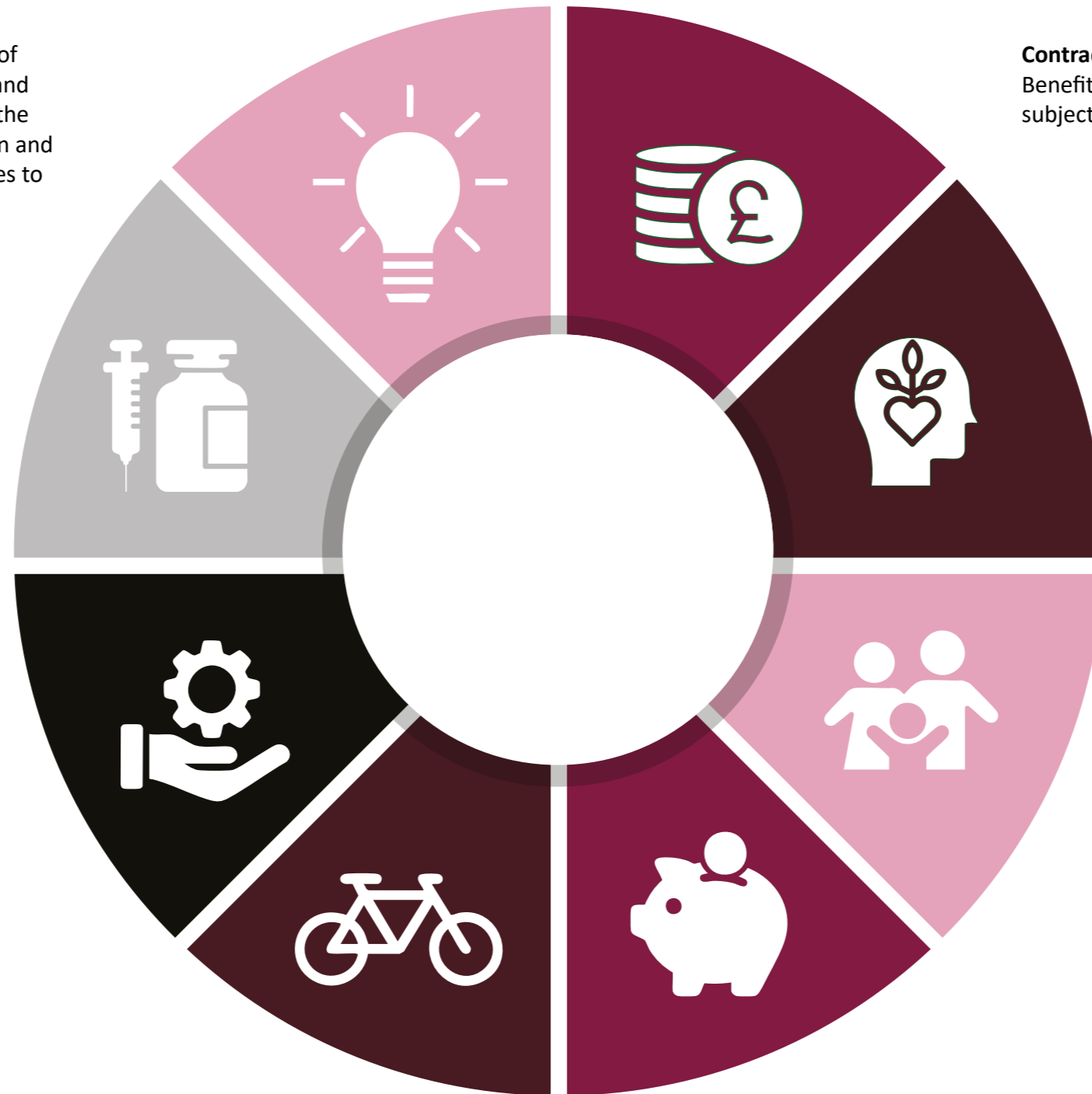
We offer an annual flu vaccination to all staff.

Employee Assistance Programme

Our EAP is free and confidential, offering independent help, information and guidance to you and your immediate family, including counselling, musculoskeletal services and online resources, 24 hours a day, seven days a week.

Cycle to Work Scheme

Join Cycle2work to make big savings on a new bike and benefit from regular exercise and a greener and cheaper commute. Save at least 32% on the cost of thousands of bikes and accessories.



Contractual Status of our Benefits

Benefits do not form part of the contract of employment and are subject to change at the discretion of the organisation.

Pension

Generous Pension Schemes, including Teachers' Pensions and Local Government Pension Scheme. Employees are automatically opted into the relevant scheme upon appointment.

Wellness Day

An additional day leave for you to spend time on your own wellness. A day to rest and recuperate, helping you bring your best selves back to work.

Family Friendly Policies

Our Family Friendly Policies include maternity, partner/paternity, adoption and shared parental leave.

Life Style Savings

There are hundreds of offers and discounts ready to be used on the Lifestyle Savings section of our staff benefits platform.

And much more - see employee benefits brochure



OUR FAMILY

At QUEST Trust, our family of academies is united by a shared commitment to Supporting Young People from Early Years to Employment. Across our four primary schools, our secondary school and its thriving sixth form, and our dedicated early years provision at Play Pals, we provide a continuous and supportive journey for every child. Each setting has its own unique character and strengths, but together we create a collaborative community where staff work closely to share expertise, nurture talent and ensure every young person is given the opportunity to succeed and flourish.

St. John's C. of E. Primary School, Abram

A welcoming, values led school where children are supported to grow, learn and thrive within a caring Christian environment.

St. John's C. of E. Primary School, Hindley Green

A caring and inclusive school where high expectations and strong values help every child feel confident, safe and ready to succeed.

St. Peter's C. of E. Primary School

A nurturing and inclusive school where strong Christian values and high expectations support every child to achieve and flourish.

Play Pals Childcare Ltd

A group of nurturing early years settings where children develop confidence, curiosity and independence through high quality play based learning.

Hindley Green Community Primary School

A friendly and inclusive school where a strong community spirit and high expectations support every child to learn, grow and succeed.

University Collegiate School & Sixth Form

An ambitious and inclusive school where students are supported to achieve, grow in confidence and prepare for successful futures beyond education.

TESTIMONIALS

“ We collaborate, we put children first and we prioritise bothrness “

“ We invest in children to flourish and thrive – that is our focus “

“ I am so happy I chose QUEST my home. I love the people, I love the fact everyone puts their heart and soul into giving children the best experiences, but with care and integrity “

“ No matter when you join us, or what your role is, you soon become part of our team “

“ This Trust is deeply committed to high quality – preparing children for life and guided by our core values “

“ Don't let our pursuit of excellence frighten you – in our trust care comes first and outcomes follow “

“ We create amazing career opportunities – we know our people so well “

“ As a Head, I love it that help is at hand – anything at any time “

“ There are no egos, we just want children to be happy and successful “

“ Supporting Young People from Early Years to Employment in everything that we do “


“ There's a real sense of belonging where people lift each other up, celebrate together, and you never feel alone in what you do “

“ The culture of support and collaboration across the Trust has been instrumental in shaping my confidence and growth as a leader “

CONTACT

 **Head Office**
682 Atherton Road
Hindley Green
Wigan
WN2 4SQ

 Email: enquiries@quest-trust.org.uk

 Tel: 01942 834 000

 Website: www.quest-trust.org.uk

Alternatively access our website by scanning the QR code below:



Follow us on Socials

Stay up to date for the latest news and updates through our social media pages below:

-  QUEST Trust
-  @quest.trust
-  QUEST Trust

Our Partners and Connections

