



The  
Bulmershe  
School

INSPIRING POTENTIAL,  
ACHIEVING TOGETHER



# The Bulmershe Sixth Form

# Contents

Welcome	3
Reasons to join Bulmershe	4
Practical information	5
Destinations	6
Head Students	7
What we offer	10
Entrance criteria	11
Enrichment	12
Our course guide	13
<u>A-Levels</u>	
Art	14
3D Design	15
Biology	16
Business	17
Chemistry	18
Computer Science	19
Drama	20
Economics	21
English Literature	22
English Language & Literature	23
French	24
Further Mathematics	25
Geography	26
History	27
Mathematics	28
Media Studies	29
Music	30
Photography	31
Physical Education	32
Physics	33
Politics	34
Psychology	35
Spanish	36
<u>Level 3 Vocational</u>	
Applied Science	37
Business Studies	38
Criminology	39
ICT	40
Sports Studies	41
Travel & Tourism	42
EPQ	43

Welcome to the Bulmershe School Sixth Form. If you are hardworking and ambitious then our Sixth Form is the place for you to pursue the next important stage of your academic career, whether you are considering A-Levels or more applied, vocational courses.

We are justifiably proud of our achievements in the Sixth Form; our strong academic reputation continues to grow, with our 2025 results **well above National Average.**

At The Bulmershe Sixth Form, you can enjoy the best of both worlds: the independence of college with reduced hours and more self-directed study, combined with the familiar support system you're used to, including personalised mentoring, and guidance on your next steps. What sets us apart is the leadership and community opportunities available due to our lower school being on site, offering you experiences that go beyond the classroom - something you won't find at a typical sixth form college. It's the perfect environment to thrive academically and personally!

Our dedicated and committed staff will be with you all the way, with the expertise to direct you to the right pathway of study that is tailored for you. By the end of Year 13 you will be ready and able to embark on the next stage - be that higher education, an apprenticeship or the world of work.

We look forward to working with you.



**Amanda Woodfin**  
Headteacher



# Welcome

As the Heads of the Bulmershe Sixth Form, it's our aim to make sure you get where you want to go. Career dreams in mind? We've got you covered, whether it's working in an apprenticeship or conquering the academic path to university. Our team of mentors are at your service from day one, with dedicated sessions and one-to-one support throughout your time with us.

We've got a fantastic team of staff with the experience and knowledge to help you if your aim is to enter Oxbridge and Russell Group universities, as well as being able to guide you through everything from Veterinary to Medicine exams. Thinking about Law or looking to get into construction or retail? We can help you, no matter what it is you want to do next.

At The Bulmershe Sixth Form, we're all about options: We embrace diversity and take pride in the fact that our students end up in all sorts of exciting careers. Want a sneak peek into what your future might look like? We regularly invite former students to come back to talk about their post-school success stories.

Within the Sixth Form, our students are treated as young adults and are free to express themselves as individuals. We have no specific uniform policy and instead ask students to use their judgment of what they deem to be appropriate for a school environment. Our student leadership team consists of a number of Sixth Formers who have specific roles ranging from Head of Events to Head of Inclusion. We encourage all students to take ownership of their time within Sixth Form and be proud to be part of our wider school community.

Your goals, your way - that's the Bulmershe promise. We've got your back, and we're here to springboard you into the future you've been dreaming of.

**Mr T Lord**  
**Head of Sixth Form**

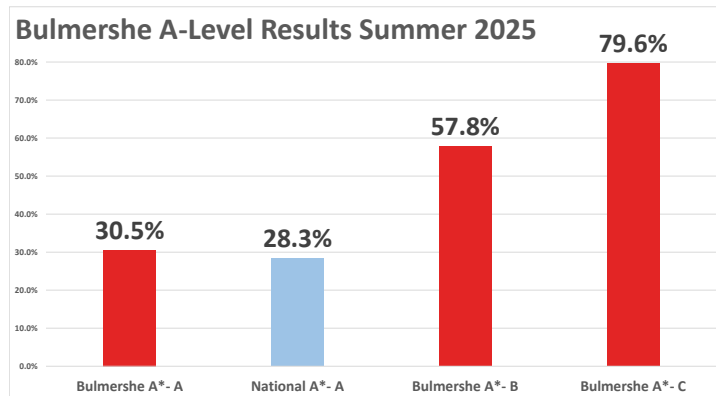
**Mr C Scott**  
**Assistant Head of Sixth Form**



# Reasons to join Bulmershe

At Bulmershe, we pride ourselves on fostering an environment where support and excellence go hand in hand.

You'll join like-minded peers who are committed to success; together, you'll form a community of learners who inspire and support each other. Transitioning from GCSEs can be challenging, but our experienced teachers and pastoral team are here to make it seamless. They quickly identify your strengths and help you unlock your full potential.



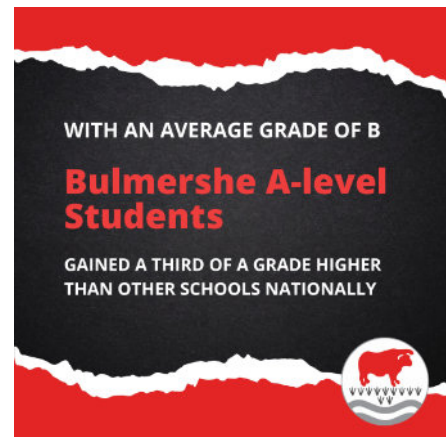
Our teachers are subject experts dedicated to fostering strong student relationships. Last year, our outcomes were outstanding: almost 80% achieved grades A\*-C, 57.8% achieved A\*-B, and an incredible 30.5% were awarded A\*-A.

These results meant 71% of our students secured their first-choice university place,

including Oxford, Cambridge, and Russell Group members. Furthermore, 20% left us for Apprenticeship positions, and 9% moved directly into the world of work.

We believe that a fulfilling student life is integral to personal growth. Our vibrant community offers a dedicated Sixth Form cafe and study area designed for both focused academic work and social interactions. We provide many opportunities for students to give back, such as assisting teachers in lower school classes or mentoring younger students. All Sixth Form students are seen as role models, and we take this responsibility seriously.

Our commitment to your future extends beyond the classroom. All our students receive tailored destination support. Our experienced UCAS coordinator and careers adviser, along with the comprehensive Unifrog destinations planner, ensure you are well-prepared to make informed choices about your future path.



*“Teachers’ excellent subject knowledge captures students’ interest and enables rapid progress... students are set ambitious targets and lessons proceed with pace and purpose” - Ofsted*

# Practical Information

## Online Applications

Students are invited to apply for The Bulmershe Sixth Form online. Scan this QR code to be taken directly to the application form:



<https://www.thebulmersheschool.com/70/sixth-form-application>

Applicants will then be interviewed by the Sixth Form Leadership team in March.

## Registration

Year 12 students are expected to attend morning registration on Mondays, Wednesdays and Thursdays. Year 13 students are expected to attend morning registration on Tuesdays. Contact with form tutors is vitally important for all Sixth Form students.

## Facilities and Areas

All Sixth Form students have designated areas in and around school that they can use during the school day. These include a dedicated Sixth Form social area, cafe and study centre, as well as the school's Media Resource Centre, Canteen and the School Library.

## Timetables

Most students will study at least 3 courses. Students gaining 4 or more Level 7s at GCSE will have the opportunity to study 4 subjects. Each Sixth Form student will have supervised study periods on their timetable; they will be registered for this period and will be expected to work independently during this time.

## Next Steps and Information

50-70% of our Year 13 students apply and continue their studies at university after finishing Sixth Form. Those who choose to look at other career or training paths are supported by experienced staff. Form tutors are responsible for writing and collating references. Personal Development sessions equip students with the knowledge and understanding.

**Sixth Form Open Evening  
6<sup>th</sup> November 5:45pm - 7:30pm**

**Online application deadline  
18<sup>th</sup> December 2025**

**Interviews conducted and  
conditional offers made based  
on predicted grades in  
February/March 2026**

**Sixth Form Taster Day  
June 2026**

**Course selection confirmation  
20<sup>th</sup> August 2026  
(GCSE results day)**

**3 week settling-in period to  
ensure you have the correct mix  
of subjects - September 26**



# Destinations

Our 2025 Bulmershe Sixth Form leavers went on to a variety of locations including a number of different universities, apprenticeships and work places. Of our 116 students, 71% secured places at university, 20% secured apprenticeships and 9% gained employment or took a gap year.

Whatever your hopes for the future, our supportive team are here to ensure that we help you secure your chosen path.

## Oxbridge and Russel Group Applicants

We run sessions in Years 12 and 13 for those who have the talent, ambition and ability to apply to the most competitive universities.

### Group sessions:

- What is the Russell Group? Why apply?
- Oxford and Cambridge – how are they different to other universities?
- What is the ‘Super-curriculum’? How can you explore beyond the school syllabus in your subject?
- Why do an Extended Project Qualification?
- How to apply to Oxford and Cambridge summer schools?
- How to write Russell Group personal statements?



### Individual support:

- Advice on reading around your subject.
- How to develop your personal statement.
- Tutorials for entrance examinations.
- Mock interview practice.



### Further Information

[tmoran@bulmershe.wokingham.sch.uk](mailto:tmoran@bulmershe.wokingham.sch.uk)

Miss T Moran



# Head Students

## Meet our Head Students

At The Bulmershe Sixth Form, we place a strong emphasis on student leadership and giving back to the wider school community. Our students have numerous opportunities to take on responsibility, serve as role models and develop vital skills.

Our leadership structure is broad, encompassing roles within the Student Marketing Team, the Events Team, and the Sixth Form Council. Students formally apply for roles within the Sixth Form Leadership Team and are interviewed by senior leaders to ensure they are ready for the responsibility.

On the next pages, you will meet our current Head Students. They will share their personal stories and explain, in their own words, why they chose to continue their education here at The Bulmershe Sixth Form.

### Aniya

Approaching the end of my school career at Bulmershe, I could not be more thankful for the endless encouragement and memories I have made over the past 7 years. Bulmershe would not be Bulmershe without its incredible network of experienced teachers and pastoral care. The level of support available to students is unparalleled.

Since joining Sixth Form, the increase in my resilience has been staggering. The transition from GCSEs to academically challenging A-Levels was undoubtedly demanding, however, the support from my subject teachers and Heads of Year, with their willingness to help at any hour of the day, made the process seamless.

I feel my decision to solely apply to Bulmershe was the right one. Bulmershe has offered me a variety of fantastic opportunities, making my application to university unique. Oxford University visits, my Head Student position, my role as Matilda in the school's production, Gold Duke of Edinburgh, and completing an EPQ have equipped me with invaluable soft and academic skills.

Whether you look forward to applying to university, an apprenticeship, or an alternative route after Sixth Form, Bulmershe's destinations and extra-curricular support is exceptional. I would encourage all new Year 12 students to challenge themselves and stay perseverant throughout their journey!



# Head Students



**Reeshan**

My experience at the Bulmershe Sixth Form has been one of both personal and academic growth. The incredibly supportive approach from staff has encouraged me to push beyond my limits and aim to achieve my best. My organisation, research and planning skills have completely transformed, and Bulmershe has ensured that I am able to apply these skills throughout every part of my student life. When it came to choosing where to continue for Sixth Form, the decision was quite easy. The academic results achieved by the Bulmershe Sixth Form are outstanding, and the resources provided by the school make a real difference to how students are able to study effectively.

What makes Bulmershe a fantastic place is the guidance and support it gives its students. Students are given that sense of independence required to prepare you to manage your time, meet deadlines and gain responsibility. These skills are not only vital in the run-up to A-levels, but are essential for whatever path you choose to take after Year 13. The Bulmershe School also offers a significant array of extra-curricular opportunities. Due to this I've had the opportunity to progress from bronze to gold Duke of Edinburgh, which developed some of my essential life skills: collaboration, determination and confidence. Opportunities like these make the Sixth Form and overall Bulmershe experience both fulfilling and memorable.

**Kamila-Nikol**

What makes Bulmershe different is the level of support given to every student and the opportunities for growth provided. Ever since I joined the school, I felt surrounded by motivated and caring people who use every day as a little step for building great success. It was Bulmershe that taught me to utilise every opportunity and moulded my academic approach.

After getting an exceptional experience with Bulmershe during GCSEs, applying here for Sixth Form was a no-doubt decision for me. The transition to advanced studies was smooth and well organised, accompanied by a team of attentive professionals and inspiring peers.



Throughout my academic journey, Bulmershe has equipped me with essential skills and provided opportunities to consolidate them. It has shaped my leadership and growth aspirations, and the opportunity to become a Head Student is a reflection of how Bulmershe empowers the students to create change and develop beyond the classroom.

Bulmershe has the right environment that makes you achieve your best results every day and helps you unleash your potential. The range of options offered here means everyone's interests and passions can be explored in depth, making their experience special for them. Bulmershe incorporates a strong academic basis, extracurricular enrichment, and a diverse community, making it a great place to study.



# Head Students



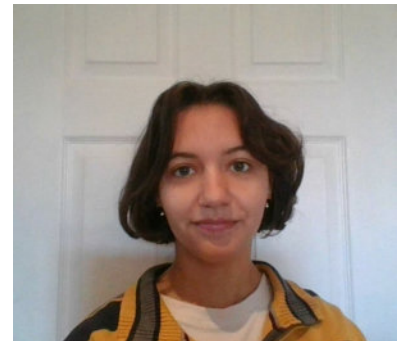
## Holly

During my first year of the Bulmershe Sixth Form, I found the best aspect to be the wonderful support offered by my teachers. The leap between GCSEs and A-levels was certainly demanding, but right from the start my teachers made sure I had the skills and knowledge I needed to bridge the gap. I am always comfortable seeking advice and raising any concerns I have, because of my teachers' commitment to provide as much help as possible. Their unwavering dedication has been integral to my success in the Sixth Form.

What makes Bulmershe stand out from other sixth forms is their consistent focus on ensuring everyone has a destination after their A-levels. I used to be terrified of leaving school, but thanks to the Destinations sessions, workshop days and guest talks, I'm now so much more comfortable about applying to universities. There is never any pressure to go to university, however, and the school always encourages you to do what's right for you, whether that's an apprenticeship, full-time employment or a gap year. The wide range of support has made the whole process so much smoother.

## Caitlin

Choosing to stay on at Bulmershe for my A-levels was an easy choice for me - not only have I known the amazingly supportive staff here since year 7, but I had also heard that the Sixth Form centre was getting a makeover! The creation of a new, exclusive cafe and study spaces for year 12 and 13 in the heart of the school has been hugely popular, building on the sense of community in our Sixth Form.



The teaching staff here at Bulmershe are also, I believe, what sets us apart in our local area. As A-level students and young adults. Teachers will treat you with respect, going out of their way to support you however they can. For example, I am currently in the process of submitting an early application to Oxford University, and our designated Oxbridge liaison, Miss Moran, takes time out of her busy schedule to meet face-to-face and help me with my personal statement. At Bulmershe, staff genuinely want you to succeed.

Taking on the role of Head Student was something I felt willing to do in order not only to gain vital experience in leadership and organisation, but also to give back to the school and ensure everyone's voice is heard.

# What we offer

At The Bulmershe School we take pride in our excellent teaching of A-Level subjects, and we also include Level 3 vocational courses that can be studied alongside A-levels.

All students entering Sixth Form are expected to study a minimum of 3 subjects. We believe in all our learners and our goal is to help you reach your full potential. Our experienced team will assist you in finding the perfect combination of subjects and enrichment opportunities to match your interests and ambitions. Whether your aim is to secure a place at a top university or embark on a rewarding apprenticeship, we have the resources and support you need to achieve your goals.

## A-Level

We offer A-Levels in a range of subjects and prepare students well for university. A large proportion of A-Level courses are exam based with a small percentage of coursework.

A-Level		
Art	Economics	Media Studies
3D Design	English Literature	Music
Biology	English Language & Literature	Photography
Business	French	Physical Education
Chemistry	Further Mathematics	Physics
Computer Science	Geography	Politics
Drama	History	Psychology
	Mathematics	Spanish

## Level 3 Vocational Courses

We offer the following level 3 vocational courses, all of which are the equivalent of one whole A-level. Vocational courses tend to have slightly lower entry requirements and have a mixture of coursework and formal assessments. Vocational subjects (except Criminology) are graded Pass, Merit, Distinction and Distinction\*. All of our vocational courses can lead to students progressing onto university and onto different apprenticeships. Students can mix and match vocational courses with A-levels as part of their study programme.

Level 3 Vocational	
Applied Science	Information Technology
Business	Sport Studies
Criminology	Travel and Tourism

*While we strive to run every listed course, low student enrollment may lead to reduced hours or the course being withdrawn. Additionally, we may be able to offer further subjects if there is sufficient interest from students*

# Entrance Criteria

To join our Sixth Form, you'll need at least five GCSEs at grade 4 or higher, including English and Maths. To enrol in any course within The Bulmershe Sixth Form, subject specific requirements must be met.

Please see below for subject specific entry requirements:

A-Level L3	Grade Required
Art	Grade 5 in GCSE Art
3D Design	Grade 6 in GCSE 3D Design
Biology	Grade 6 in Biology or grade 6/6 in combined Science and a grade 6 in Maths
Business	Grade 5 in GCSE Business Studies (if studied) or grade 5 English and Maths
Chemistry	Grade 6 in Chemistry or grade 6/6 in Combined Science and a grade 6 in Maths
Computer Science	Grade 6 in GCSE Computer Science
Drama	Grade 5 in GCSE Drama
Economics	Grade 6 in GCSE Economics (if studied) or grade 6 in English and Maths
English Literature	Grade 5 in GCSE English Literature and Grade 5 in English Language
English Language and Literature	Grade 5 in GCSE English Literature and Grade 5 in English Language
French	Grade 6 in GCSE French
Further Mathematics	Grade 8 in GCSE Maths
Geography	Grade 5 in GCSE Geography and grade 5 in English and Maths
History	Grade 5 in GCSE History and English
Mathematics	Grade 7 in GCSE Maths
Media Studies	Grade 5 in GCSE Media (If studied) or grade 5 in English and Maths
Music	Grade 6 in GCSE Music
Photography	Grade 5 in GCSE Photography
Physical Education	Grade 5 in GCSE PE and grade 5 in Biology or Combined Science
Physics	Grade 6 in Physics or grade 6/6 in Combined Science and grade 6 in Maths
Politics	Grade 4 in English and Maths
Psychology	Grade 6 in GCSE Psychology (if studied) or grade 6 in English and Maths
Spanish	Grade 6 in GCSE Spanish
EPQ	Grade 6 in GCSE English required. Must be started in year 12.

L3 Vocational	Grade Required
Applied Science	Grade 5 in Combined Science. Grade 4 in GCSE English and Maths
Business Studies	Grade 4 in GCSE English and Maths
Criminology	Grade 5 in GCSE English and grade 4 in Maths
Information Technology	Grade 4 in GCSE English and Maths
Sport Studies	Grade 4 in GCSE PE or Level 2 Merit/Distinction in Vocational Sport and Grade 4 in GCSE English and Maths
Travel and Tourism	Grade 4 in GCSE English and Maths

All students must have met the stated entrance requirement to be enrolled onto any course within The Bulmershe Sixth Form. If courses reach capacity, students and their families will be informed at the earliest opportunity.

# Enrichment

We fully understand that Key Stage 5 studies can become very stressful and at The Bulmershe Sixth Form we believe in the power of staying active. We are incredibly fortunate to have outstanding sporting facilities at the school, including the Bulmershe Leisure Centre and Goals centre, both of which can be used by Sixth Form students.

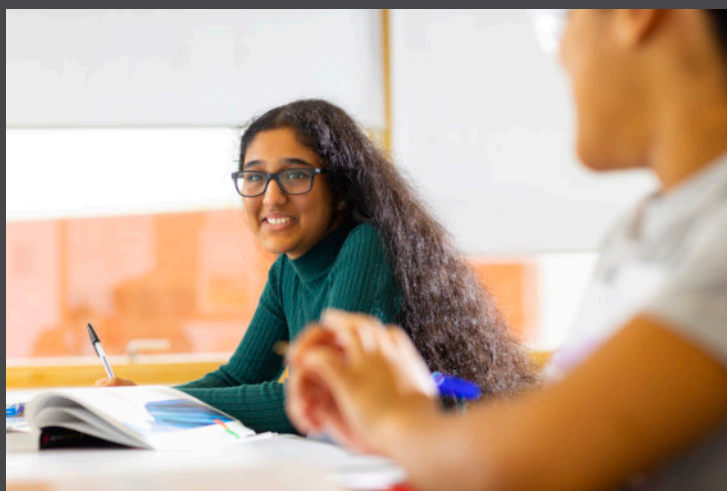
If you are feeling up for a challenge, we also have **Duke of Edinburgh Awards** [DofE] Silver and Gold and the **Extended Project Qualification** [EPQ] waiting for you in Year 12. These offer chances to push your limits and showcase your skills. By embracing the challenges of the DofE award, students develop resilience, teamwork and leadership abilities, preparing them for the demands of higher education and the professional world. Similarly, undertaking the EPQ in Year 12 offers students a valuable opportunity to develop essential research and critical thinking skills, preparing them for the rigours of university and future professional endeavours.

In addition to the above, we constantly seek experiences and trips to add to our offer to enrich and inspire. Year 12 students visit Reading University each year to explore the different courses on offer at the local university. We also have a local company, Invesco, come and deliver presentations to Sixth Form students each year about their apprenticeship vacancies.

Through our enrichment programme, in combination with our dynamic curriculum, we hope to challenge and motivate high-achieving students to reach their full potential. We aim to foster intellectual curiosity and academic excellence by providing tailored support and resources to help you excel.

Our core aim is to make sure you have a clear path after you leave us. We're all about opening doors to further education and local employers. Your future is important to us, and we're here to help you make it as bright as possible.





# Our Course Guide



The Fine Art A-Level course is designed to develop intellectual, imaginative and expressive skills, as well as aesthetic and critical understanding. Our students are culturally diverse young people who are given every opportunity to express themselves through their art work. Students will explore a range of skills and media including: drawing, painting, sculpture, ceramics, printing, mixed media, collage and new technologies.

## Course Content

### Year 12 – 60% of total A Level

Component 1 – Coursework portfolio

- You will experience a wide range of different materials and approaches and produce work that demonstrates breadth and depth of skills and understanding.
- You will also produce an extended collection of work that will develop from an initial starting point to a final outcome.

Component 1 – Personal Investigation

- You will produce a practical investigation with written elements that lead to a final piece or pieces.

### Year 13 – 40% of total A Level

Component 2 – Externally set assignment

- You are given the choice of eight starting points and will undertake fifteen hours unaided, supervised time to complete a final piece.

## Entry Requirements

Students must have achieved a minimum grade 5 in Art at GCSE.

## Progression

Fine Art A-Level is an ideal opportunity for those seeking to work within the visual arts. In addition, students may pursue diplomas and degrees in Fine Art, Art History, Graphic Design/ Illustration, Fashion/ Textiles, Theatre/ Interior Design, Ceramics, Sculpture, Film/ Media, Advertising, Animation, Product/ Industrial Design, Architecture, Digital/ Web Design.

## Further Information

[sdavis@bulmershe.wokingham.sch.uk](mailto:sdavis@bulmershe.wokingham.sch.uk)  
Mr S Davis

[www.aqa.org.uk/subjects/art-and-design/as-and-a-level/art-and-design](http://www.aqa.org.uk/subjects/art-and-design/as-and-a-level/art-and-design)

*“Art enables us to find ourselves and lose ourselves at the same time”.*  
- Thomas Merton



**J Solaymantash**  
Mixed media Portrait



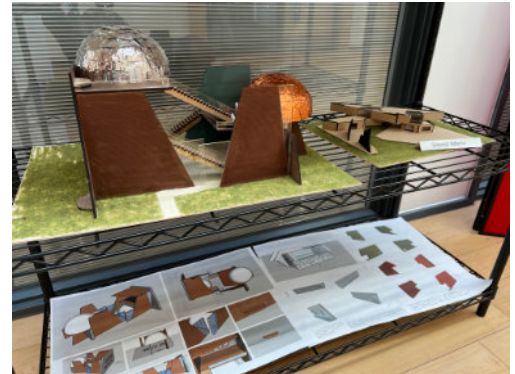
# 3D Design

The 3D A-level course is centred on architecture. In your first year we will develop your skills and capabilities through a series of activities and workshops led by your teacher, culminating in your own extended architectural design project. You will develop your appreciation of form and function and the use of a variety of materials, modelling and manufacturing processes. You will develop your abilities to draw, sketch, use CAD/CAM and prototype through modelling to communicate your ideas. You will become familiar with major design movements and the work of other architects, designers and artists in order to broaden your appreciation of good design. In your second year you will build upon the techniques learnt in the first year and will have the freedom to explore your own project work.

## Course Content

### Year 12 - Component 1 – Personal Investigation

- You will experience a wide range of different materials and approaches and produce work that demonstrates breadth and depth of skills and understanding
- You will develop your understanding of a successful creative process
- You will produce an extended collection of work that will develop from an initial starting point and your researched architects to a final architectural outcome.
- You will produce a practical investigation with written elements that lead to a final piece or pieces
- You will produce an essay of 1000-3000 words that evidences your critical and contextual research and understanding



### Year 13 - Component 2 – Externally set assignment

- You are given the choice of up to eight starting points, of which you will choose one, and apply a personal theme, site and purpose for your final architectural exploration
- You will apply your learnt knowledge and understanding of the creative process, materials and machinery to develop a preparatory portfolio
- You will undertake fifteen hours unaided, supervised time to complete your planned final architectural model

## Entry Requirements

A minimum grade 6 in 3D Design at GCSE.

A grade 6 or above in Mathematics or Physics at GCSE is also beneficial, as would pairing the 3D design course with a Maths or Physics A-Level course. This is because of the frequent use of mathematics, scale, trigonometry and engineering applied in the designing and model making stages. It will also secure foundation knowledge and understanding to create options for higher education courses.

## Progression

Students who study this course go on to further study in a wide variety of careers, for instance; Architecture, Interior/spatial design, 3-dimensional design, Product design, Exhibition design, Design for television, Stage and film, Silver Smithing, Model making, Environmental design, Sculpture, Furniture design, Transport design, Ceramics, Glass.

## Further Information

[ktrenwith@bulmershe.wokingham.sch.uk](mailto:ktrenwith@bulmershe.wokingham.sch.uk)

Mrs K Trenwith

<https://www.aqa.org.uk/subjects/art-and-design/as-and-a-level/art-and-design/subject-content/three-dimensional-design>

*“To create, one must first question everything.” – Eileen Gray*

The Science of Life: Biology involves the study of a wide range of exciting topics, ranging from molecular biology to the study of ecosystems, and from microorganisms to mammoths. Biology is never far from the headlines either... the human genome has been sequenced, and we know the complete arrangement of the three thousand million bases that make up human DNA. In Kenya, 350 people die every day from AIDS, and in South East Asia the skies are dark with smoke as the last Bornean rainforests are burned to grow oil palms. Biologists are concerned with all these issues.

## Course Content

### Year 1 Outline:

- Module 1 – Development of practical skills in Biology
- Module 2 – Foundations in Biology
- Module 3 – Exchange and Transport
- Module 4 – Biodiversity, Evolution and Disease

### Year 2 (All of the above plus the following modules):

- Module 5 – Communication, Homeostasis and Energy
- Module 6 – Genetics, Evolution and Ecosystems



## Assessment

Paper 1 – Biological processes – Modules 1, 2, 3 & 5. 2h15min, 100 marks – 37%

Paper 2 – Biological Diversity – Modules 1, 2, 4 & 6. 2h15min, 100 marks – 37%

Paper 3 – Unified Biology – All modules. 1h30min, 70 marks – 26%

**Practical Endorsement for Biology** – Awarded at the end of the A-Level course for completing practicals from 12 different skills groups and showing practical competence.

## Entry Requirements

Essential: grade 6 in Biology or grade 6,6 in Combined Science and grade 6 in Mathematics

## Progression

Biology is one of the most popular A-Level subjects in the country, attracting students studying a wide range of other subjects. Many of these students enjoy the subject so much that they eventually choose a biologically-related degree course. Others go on to careers in law, computing, accounting or teaching. So, whatever field you will eventually work in, you will find Biology a very rewarding and challenging course, which will develop many of the skills essential for a successful career.

## Further Information

[lnath@bulmershe.wokingham.sch.uk](mailto:lnath@bulmershe.wokingham.sch.uk)

Mrs L Nath

[www.ocr.org.uk/qualifications/as-a-level-gce/biology-a-h020-h420-from-2015/](http://www.ocr.org.uk/qualifications/as-a-level-gce/biology-a-h020-h420-from-2015/)

*“An understanding of the natural world and what’s in it is a source of not only a great curiosity but great fulfilment.” David Attenborough*



A-Level



AQA

# Business

In Business, students learn in detail about the four functional areas of Accounting and Finance, Human Resources, Marketing and Operations. The business environment is also studied in detail, including the UK economy, the political environment and the effects of globalisation. Students learn to understand and interpret the strategic decisions made by business leaders on a day to day basis and the impact of these decisions.

## Course Content

### Year 1

- Unit 1: What is Business?
- Unit 2: Managers, Leadership and Decision making
- Unit 3: Decision making to improve marketing performance
- Unit 4: Decision making to improve operational performance
- Unit 5: Decision making to improve financial performance
- Unit 6: Decision making to improve human resource performance

### Year 2

- Unit 7: Analysing the strategic position of a business
- Unit 8: Choosing strategic direction
- Unit 9: Strategic methods: how to pursue strategies
- Unit 10: Managing strategic change



## Assessment

Year 1: Two exams - both 1 hour 30mins

Year 2: Three exams - all 2 hours

## Entry Requirements

Grade 5 in GCSE Business Studies (if studied) or grade 5 English and Mathematics

## Progression

A qualification in Business gives you an upper hand going into many fields. Popular progression routes include: Accountancy, Business Administration, Business Economics, Business Management, Finance, International Business or joint courses with languages. Many employers also list the skills developed in Business as essential; these include communication and analytical skills.

## Further Information

[parko@bulmershe.wokingham.sch.uk](mailto:parko@bulmershe.wokingham.sch.uk)

Mr P Arko

<https://www.aqa.org.uk/subjects/business/as-and-a-level/business-7131-7132>

***“A-Level Business has given me the skills so many universities and employers look for when hiring. It is a truly interesting and useful A-Level to have.” - Year 13 student***



The  
Bulmershe  
School

The science of chemistry has a wide impact in the modern world and chemical research continues to be at the forefront of many new technologies. Chemists are engaged in designing and discovering new medicines to fight disease, developing new technologies to help protect the environment and inventing new products and materials for the food and drink, agricultural and energy industries. In addition, chemists play pivotal roles in other specialities; for example, acting as forensic scientists by using innovative techniques to analyse crime scene evidence.

## Course Content

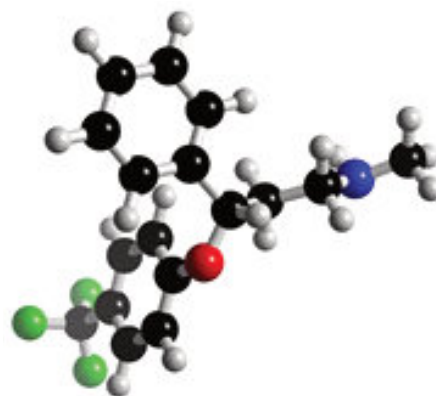
The Edexcel qualification focuses on 20 topic areas divided broadly into the following modules:

### Year 1

- Module 1 – Development of practical skills in chemistry
- Module 2 – Core inorganic and physical chemistry
- Module 3 – Core organic and physical chemistry

### Year 2

- Module 4 – Practical skills in chemistry
- Module 5 – Advanced inorganic and physical chemistry
- Module 6 – Advanced organic and physical chemistry
- Module 7 – General and practical principles in chemistry



## Assessment

The course is assessed by terminal exams in June of Year 13.

Students will sit 3 papers:

Paper 1: Advanced inorganic and physical chemistry	90 marks	1h45min
Paper 2: Advanced organic and physical chemistry	90 marks	1h45min
Paper 3: General and practical principles in chemistry	120 marks	2h30min

Practical skills are internally assessed throughout the course and externally moderated by Pearson.

## Entry Requirements

Essential: grade 6 in Chemistry or grade 6, 6 in Combined Science and grade 6 in Mathematics

## Progression

Many university courses have a significant proportion of chemistry content and an A-Level course from Edexcel is excellent preparation for further study. Examples of such courses, which often include a year spent in industry or at a university abroad, include: medicinal chemistry, forensic science, toxicology, pharmacology, sports science and computer science. A chemistry qualification opens the door to a range of careers options, both in and out of the lab. There are endless interesting and rewarding science-based jobs, ranging from fundamental research to product development and marketing and sales.

## Further Information

[nharris@bulmershe.wokingham.sch.uk](mailto:nharris@bulmershe.wokingham.sch.uk)

Dr N Harris

<https://qualifications.pearson.com/en/qualifications/edexcel-a-levels/chemistry-2015.html>

***“Every aspect of the world today – even politics and international relations – is affected by chemistry.” - Linus Pauling***



A-Level



OCR

# Computer Science

Computer Science is a practical subject where students can apply the academic principles learned in the classroom to real world systems. It is an intensely creative subject that combines invention and excitement, and can look at the natural world through a digital prism. Students will develop computational thinking skills to solve problems, design systems and understand the power and limits of human and machine intelligence. Students will also develop an ability to analyse, critically evaluate and make decisions.

## Course Content

The content of the A-Level in Computer Science is divided into three components:

- Computer Systems Component (01) contains the majority of the content of the specification and is assessed in a written paper recalling knowledge and understanding.
- Algorithms and Programming component (02) relates principally to problem solving skills needed by learners to apply the knowledge and understanding encountered in Component 01.
- Programming Project Component (03 or 04) is a practical portfolio based assessment with a task that is chosen by the teacher or learner and is produced in an appropriate programming language.

Mathematical skills are embedded throughout the content of the three components. They will be assessed in the written papers and through the non-examined assessment where appropriate.

## Assessment

Both the Computer systems component (01) and Algorithms and Programming (02) units are externally examined at the end of the second year of the course. Each paper lasts for a duration of 2½ hours and are worth 80% of the qualification grade. The Programming Project Component (03) unit is internally assessed and externally moderated by the OCR Exam board. It is worth 20% of the qualification grade.

## Entry Requirements

Students intending to study Computer Science A-Level must have studied and passed GCSE Computing/Computer Science achieving a minimum of a grade 6.

## Progression

Students who successfully complete this Computer Science course could pursue any career in which an understanding of technology is needed. The qualification is also suitable for any further educational study at university or as part of a course of general education. It will also provide students with a range of transferable skills which will facilitate personal growth and foster cross curriculum links in areas such as Mathematics, Science and Design & Technology.

## Further Information

[emorden@bulmershe.wokingham.sch.uk](mailto:emorden@bulmershe.wokingham.sch.uk)  
Mr E Morden

[www.ocr.org.uk/qualifications/as-a-level-gce/computer-science-h046-h446-from-2015/](http://www.ocr.org.uk/qualifications/as-a-level-gce/computer-science-h046-h446-from-2015/)



*“The best way to predict the future is to create it.”  
Alan Kay, GUI Pioneer and Computer Scientist*

The Edexcel A-level Drama course gives students the chance to explore theatre from the perspectives of a director, designer, performer and critic. You'll study a variety of classic and contemporary texts, bring original theatre creations to life, and perform in both devised and scripted plays. Alongside this, you'll develop your analytical skills by evaluating live theatre and your own performances. The course strikes a balance between practical work and academic study, offering something for everyone - whether you enjoy performing, working behind the scenes, or critiquing theatre. It's a fantastic way to boost your creativity, teamwork and communication skills, while building confidence for future studies or a career in the arts.

## Course Content

**Component 1** – Devise an original performance piece (40%). Practical performance (20 marks) and written portfolio (60 Marks)

**Component 2** – Text in Performance (20%). Group practical performance (36 Marks) Monologue performance (24 Marks)

**Component 3** – Written Examination (40%). Live Theatre Evaluation (20 Marks), Page to Stage: Equus (26 Marks), Interpreting a Performance Text: Woyzeck using Brechtian methodologies (24 Marks)

## Assessment

Component 1 is internally assessed and externally moderated.

Component 2 is examined by a visiting examiner.

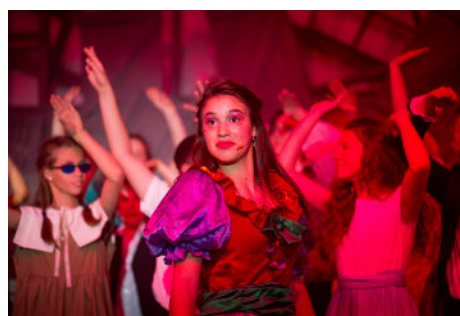
Component 3 is a written examination at the end of Year 13.

## Entry Requirements

A minimum grade 5 in Drama at GCSE is beneficial although not essential. A BTEC qualification in Performing Arts at distinction or above will also be considered as a suitable entry requirement. Students wishing to follow this course who have not studied Drama are welcome, in which case an English GCSE grade of a 5 is essential.

## Progression

The Drama A-Level is an excellent platform for higher education and career success. This qualification develops a wide knowledge of theatre styles, practitioners, and texts, skills highly valued by top universities for almost any course. Drama is not limited to Performing Arts or English degrees; it's a desirable subject across the board. We also have a proven track record of helping students secure successful entry into the country's leading Drama and Musical Theatre schools.



## Further Information

[kwhitmarsh@bulmershe.wokingham.sch.uk](mailto:kwhitmarsh@bulmershe.wokingham.sch.uk)

Mrs K Whitmarsh

<https://qualifications.pearson.com/en/subjects/drama-theatre-studies-and-performing-arts.html>

*“In Drama Lessons - challenge and teachers expectations are routinely high...pupils show enthusiasm and actively engage in discussions and learning activities.” Ofsted*



Economics is everywhere in daily life, from the news to the workplace. The subject is intertwined with anything that happens worldwide whether it be a personal decision or a worldwide trade deal. The subject of Economics equips students with a deeper understanding of why situations occur and why decisions are made. Economics A-Level requires an inquisitive mind and a strong foundation in Mathematics. The engaging yet challenging nature of the subject requires analysis and evaluation skills. Students with these skills, combined with a willingness to find out answers to questions regarding the world around them, should consider Economics a 'must pick' subject.

## Course Content

### Individuals, firms, markets and market failure (microeconomics)

- Economic methodology and the economic problem
- Individual economic decision making
- Price determination in a competitive market
- Production, costs and revenue
- Perfect competition, imperfectly competitive markets and monopoly
- The labour market
- The distribution of income and wealth: poverty and inequality
- The market mechanism, market failure and government intervention in markets



### The national and international economy (macroeconomics)

- The measurement of macroeconomic performance
- How the macro economy works: the circular flow of income, AD/AS analysis, and related concepts
- Economic performance
- Financial markets and monetary policy
- Fiscal policy and supply-side policies

## Entry Requirements

Grade 6 in GCSE Economics (if studied) or grade 6 in English and Mathematics

## Assessment

Year 1: 2 exams of 1 ½ hours (internally assessed)

Year 2: 3 exams of 2 hours (externally assessed)

## Progression

The subject is complimentary to most other A-Level courses (Mathematics, Psychology, Geography, English, Science and many others) as you develop and learn a number of skills. An A-Level in Economics opens up career pathways into a number of different industries and roles.

## Further Information

[parko@bulmershe.wokingham.sch.uk](mailto:parko@bulmershe.wokingham.sch.uk) - Mr P Arko

<https://filestore.aqa.org.uk/resources/economics/specifications/AQA-7135-7136-SP-2015.PDF>

*“Economics is everywhere, and understanding economics can help you make better decisions and lead a happier life”*



# English Literature



A-Level



Edexcel

A-Level English Literature offers the study of an eclectic balance of familiar texts drawn from our literary heritage and texts that delight readers by being new and stimulating.

## Course Content

### Year 12:

**Component 1:** Drama - Students study two Renaissance Drama texts

**Component 2:** Prose - Students study two prose texts exploring 'Crime and Detection'

**Component 3:** Coursework - Students begin exploring texts independently for their coursework in which they will compare two Dystopian Fiction texts.

### Year 13:

**Component 3** from Year 12: Coursework is completed in the first term.

### Component 4: Poetry

4a: Anthology Poetry and Unseen Poetry

Students study the selection of poetry from the post-2000 collection and learn unseen poetry skills.

4b: Poet/Literary Period Study: Students study either a range of poetry from a literary period or a range of poetry by a named poet within a literary period.

## Assessment

This is a 2-year course. We will run internal mocks throughout year 12, but the official assessment will be in year 13.

Paper 1 Drama - 2 hours 15 mins (30%)

Paper 2 Prose - 1 hour (20%)

Paper 3 Poetry - 2 hours 15 minutes (30%),

Coursework (20%)

## Entry Requirements

Grade 5 in GCSE English Literature and a grade 5 in English Language. Students need to enjoy learning about how English works and enjoy reading and responding to both non-fiction and literary texts.

## Progression

You can apply to do a degree in a wide range of subjects, such as English, journalism, media and communication studies or law. You can also apply for a job with training in the public and voluntary sectors. By studying literature, you will become expert at reading and responding to a wide variety of texts; at interpreting, analysing and gathering and assessing evidence; and at working independently and creatively.

## Further Information

[nwebb@bulmershe.wokingham.sch.uk](mailto:nwebb@bulmershe.wokingham.sch.uk)

Miss N Webb

<https://qualifications.pearson.com/en/qualifications/edexcel-a-levels/english-literature-2015.html>



***"A classic is a book that has never finished saying what it has to say."  
— Italo Calvino, The Uses of Literature***



A-Level



Edexcel

# English Language & Literature

The combined study of English Language and Literature qualification involves producing your own writing, such as short stories, drama scripts, newspaper reports and speeches, as well as studying a range of literary and non-literary texts. The course is an exciting way of looking at both Language and Literature, so rather than seeing these as separate entities, you will be looking at how each informs the other.

## Course Content

### Component 1 (40%): Voices in Speech and Writing

(2 hours 30mins open book examination)

**Section A - Comparing Voices (25 marks):** one comparative essay question comparing an unseen text and one text from the Voices Anthology of non-literary texts with extracts from screenplays to seminal political speeches.

**Section B - Drama texts (25 marks):** one extract-based question from a drama text studied in class, currently *Translations* by Irish writer, Brian Friel. This is an exploration of how voice is created with linguistic features in a literary text.

### Component 2 (40%): Varieties in Language and Literature

(2 hours 30mins exam)

**Section A - One essay question (20 marks)** on an unseen prose non-fiction extract with the unseen extract linked to the studied theme - Society and The Individual.

**Section B - One comparative question (30 marks)** on the studied novel, *The Great Gatsby*, and one other text, *The Whitsun Weddings* by Philip Larkin, within the specific theme, Society and The Individual.

**Component 3 (20%):** Based on an overarching theme, the three coursework assignments comprise one piece of fiction writing; one creative non-fiction piece (2000 words total); and one analytical commentary (1200 words total). Texts written may include podcast, article, speech, play script, short story or extract from a novel.

The coursework allows students to develop their creative voice by producing original writing. They'll read widely on a chosen topic, explore personal interests, and reflect on how texts are crafted, using literary and linguistic techniques to inspire their own work.

## Entry Requirements

Grade 5 in GCSE English Literature and a grade 5 in English Language. Students need to enjoy learning about how English works and enjoy reading and responding to both non-fiction and literary texts.

## Progression

You can apply to do a degree in a wide range of subjects, such as English, journalism, media and communication studies or law. You can also apply for a job with training in the public and voluntary sectors. By studying language and literature you will become expert at analysing, interpreting and creating a variety of written and spoken texts, including media - skills which are invaluable in the real world.

## Further Information

[nwebb@bulmershe.wokingham.sch.uk](mailto:nwebb@bulmershe.wokingham.sch.uk) - Miss N Webb

<https://qualifications.pearson.com/en/qualifications/edexcel-a-levels/english-literature-2015.html>



The  
Bulmershe  
School

French A-level offers a two year course which develops the knowledge and skills acquired at GCSE and promotes further independent study. The course is designed to:

- Give an insight into the life and culture of French-speaking countries.
- Encourage confident and effective communication in the language.
- Enable development of interest in and enthusiasm for, language learning.
- Allow acquisition of knowledge, skills and understanding for practical use, for further study and/or for employment.

### Course Content

- Four themes of study
- Students also study a book and a film.
- Students have to do a research project which they present as part of the Speaking exam in Year 13.

### Assessment

The A-Level exam consists of three papers:

**Paper 1:** Listening, reading and translation. The paper is worth 80 marks, is 2 hours in length and accounts for 40% of the final grade.

**Paper 2:** Written response to works and translation. The paper is worth 120 marks, is 2 hours 40 minutes and accounts for 30% of the final grade.

**Paper 3:** Speaking which is worth 72 marks and the exam lasts for between 21 and 23 minutes, accounting for 30% of the final grade.

### Entry Requirements

Minimum grade 6 at GCSE French.

### Progression

Students often go on to study modern languages as a 'pure' degree course, or combined with subjects such as business studies, engineering, history or politics. Many of tomorrow's workforce will need language skills. Past students are now pursuing further studies in Chinese, Arabic, Law and Business Studies, as well as developing careers in fields as varied as Banking, Finance, Education, Scientific Research, Media, Computing and Marketing. "Four in ten (43%) of employers surveyed said candidates who spoke a second language had an advantage over monolingual people when applying for jobs."



### Further Information

[kHUDSON@bulmershe.wokingham.sch.uk](mailto:kHUDSON@bulmershe.wokingham.sch.uk)

Miss K Hudson

<https://qualifications.pearson.com/en/qualifications/edexcel-a-levels/french-2016.html>

**"Languages are difficult but fun and they can help you in all facets of life. They are highly regarded by all good universities."**



# Further Mathematics

The Mathematics (p28) and Further Mathematics courses have been developed to make the study of Mathematics post GCSE accessible to a broad range of students with diverse career aspirations.

Further Mathematics is not necessarily 'harder' Mathematics, but rather 'more'. Study of Further Mathematics will enable you to develop your mathematical skills as outlined in the Mathematics course, but across a much broader range of disciplines.

## Course Content

<b>Paper 1: Further Pure Mathematics 1</b>	Compusory
25%	
1 Hour 30 mins 75 marks	
<b>Paper 2: Further Pure Mathematics 2</b>	Compusory
25%	
1 Hour 30 mins 75 marks	
<b>Paper 3: Further Mathematics Option 1</b>	Students take two optional papers from the following:  - Further Pure Mathematics - Further Statistics - Further Mechanics - Decision Mathematics
25%	
1 Hour 30 mins 75 marks	
<b>Paper 4: Further Mathematics Option 2</b>	
25%	
1 Hour 30 mins 75 marks	

## Assessment

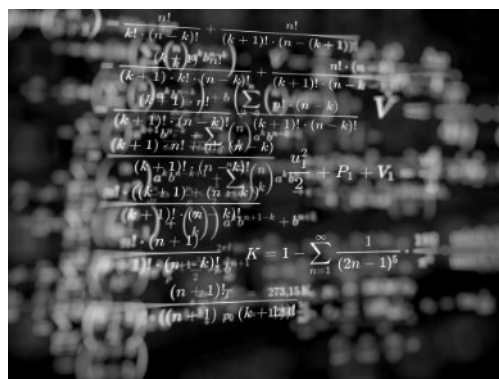
Further Mathematics is through a linear stucture, with all exams taken at the end of the course.

## Entry Requirements

Students are required to achieve a minimum of a grade 8 in Mathematics at GCSE.

## Progression

Although most Universities will accept students to read Mathematics who have achieved a high grade in their Mathematics A-Level, students who opt to study Further Mathematics have a distinct advantage at the start of the degree course. Any students who have aspirations to read Mathematics at Oxford or Cambridge, or at any of the Russell group of Universities, should take Further Mathematics.



## Further Information

[thussain@bulmershe.wokingham.sch.uk](mailto:thussain@bulmershe.wokingham.sch.uk)

Mr T Hussain

<https://qualifications.pearson.com/en/qualifications/edexcel-a-levels/mathematics-2017.html>

*"If people do not believe that mathematics is simple, it is only because they do not realise how complicated life is." John Von Neumann*



# Geography



A-Level



AQA

Successful completion of the A-Level course is dependent on completion of a 4,000 word Geographical Study known as the NEA (Non Examined Assessment) and 2 Exams.

## Course Content & Assessment

- Study the relationship between human and physical environments at a variety of scales.
- Consider their own role in relation to themes being studied and the roles of others.
- Compulsory dedicated fieldwork in both Year 12 and 13.

This course will appeal to anyone with an interest in world issues.

### Component 1: Physical Geography

Section A: Water and carbon cycle

Section B: Coastal systems and landscapes

Section C: Hazards

Written exam: 2 hour 30 minutes

40% of A-level

### Component 2: Human Geography

Section A: Global systems and global governance

Section B: Changing places

Section C: Contemporary urban environments

Written exam: 2 hour 30 minutes

40% of A-level



### Component 3: Non-Examined Assessment

Students complete an individual investigation which must include data collected in the field. The individual investigation must be based on a question developed by the student from any aspect of the course.

3,000-4,000 words

35 marks

20% of A-level

Marked by teachers and examiner moderated

## Entry Requirements

Students will need a grade 5 in Geography at GCSE, and a grade 5 or above in Mathematics and English.

Fieldwork over four days in total (two on a residential) may be compulsory for the completion of the course.

## Progression

The Geography A-Level is a good balance between human and physical geography, which sets students up for the whole range of geography courses at university. Geography A-Level also allows students to get under the surface of some of the world's current issues, giving them a balanced and holistic view unlike any other subject.

## Further Information

[sgarrard@bulmershe.wokingham.sch.uk](mailto:sgarrard@bulmershe.wokingham.sch.uk)

Mrs S Garrard

<https://www.aqa.org.uk/subjects/geography/as-and-a-level/geography-7037>

***“Geography is an interesting and challenging subject, which provides you with a range of skills that you can apply across a range of different types of jobs.”***

***- Year 12 student***



A-Level



OCR

# History

History teaches you to analyse and understand the world, seeing how the past has influenced our today. It helps to see connections between different periods and what causes events to unfold. You learn to research and question evidence to assess what is trustworthy, to weigh up different arguments and communicate effectively. History encourages people to think deeply and appreciate different viewpoints. Studying History fosters an independence in learning, crucial for higher education and employment.

## Course Content

- Unit 1: England under the later Tudors.
- Unit 2: Apartheid and Reconciliation: South African Politics 1948-1999.
- Unit 3: Russia and her rulers 1855 - 1964.
- Unit 4: Coursework on a topic of your choice.

## Assessment

- Unit 1: Exam (1 hour 30 minutes)
- Unit 2: Exam (1 hour)
- Unit 3: Exam (2 hours 30 minutes)
- Unit 4: 3-4,000-word essay

## Entry Requirements

Essential – grade 5 in GCSE History and English (We do accept students who have not studied History GCSE. A conversation must be had with the department to discuss suitability).

## Progression

History A-Level is useful for careers in journalism, TV research, law, policing, and tourism. It also helps scientists improve communication and leadership when working with others. In fact, the critical thinking and analytical skills developed in history are highly valued by employers, no matter what career path you choose.

## Further Information

[hcoombes@bulmershe.wokingham.sch.uk](mailto:hcoombes@bulmershe.wokingham.sch.uk)

Mrs H Coombes

[www.ocr.org.uk/Images/170128-specification-accredited-a-level-gce-history-a-h505.pdf](http://www.ocr.org.uk/Images/170128-specification-accredited-a-level-gce-history-a-h505.pdf)



*'History is fun'*  
*'It's interesting to know how the past influences decisions now'*  
*'The past is no longer a mystery'*



The  
Bulmershe  
School

The Mathematics and Further Mathematics (pg 25) courses have been developed to make the study of Mathematics post-GCSE accessible to a broad range of students with diverse career aspirations. The courses are designed to enable students to:

- Further develop mathematical skills and their use in more challenging and sometimes less structured problems.
- Develop logical reasoning skills.
- Use Mathematics as an effective means of communication.
- Recognise how situations can be represented mathematically and understand relations between 'real world' problems and mathematical models.
- Develop an awareness of the relevance of Mathematics to other fields of study.

## Course Content

<b>Paper 1: Pure Mathematics</b>	AS level pure mathematics content: same content as AS paper but tested at A-level demand
33%	
2 hours	
100 marks	Remaining A-Level pure mathematics content: AS content is assumed knowledge and can be tested
<b>Paper 2: Pure Mathematics</b>	
33%	
2 hours	
100 marks	
<b>Paper 3: Mechanics and Statistics</b>	
33%	
2 hours	
100 marks	

## Assessment

Further Mathematics is through a linear structure, with all exams taken at the end of the course.

## Entry Requirements

Students are required to achieve a minimum of a grade 7 in GCSE Mathematics.

## Progression

Almost any university course or job values A-Level Mathematics. However, if you wish to study Mathematics itself at university or apply for Engineering at certain Universities, you are advised to take both Mathematics and Further Mathematics.



## Further Information

[thussain@bulmershe.wokingham.sch.uk](mailto:thussain@bulmershe.wokingham.sch.uk)

Mr T Hussain

<https://qualifications.pearson.com/en/qualifications/edexcel-a-levels/mathematics-2017.html>

*"But mathematics is the sister, as well as the servant, of the arts and is touched with the same madness and genius." Harold Marston Morse*



# Media Studies

Our Media Studies course integrates theoretical and practical approaches to learning about the media today. The subject explores both the practical, creative elements of the industry as well as giving students a secure understanding of academic and theoretical approaches to media analysis, issues and debates. Students will have the opportunity to not only create products of their own across a range of platforms but will also learn the core practical skills of image manipulation, video editing and textual analysis. In addition, students will be exposed to a large variety of media products from a range of sources, platforms and cultures in order to broaden their horizons and to challenge their perceptions of the media.

## Course Content

**70% examination, 30% coursework, delivered over 2 years.**

- **Component 1 (35%)** – Students study a wide range of set texts prior to the examination from all media platforms. These include advertising, film marketing, television, radio, newspapers, videogames and online media. Students are examined on their ability to apply the key theoretical framework of the subject to these set texts.
- **Component 2 (35%)** – Students study the wider impact of six set products across the industry as a whole and in greater depth, applying knowledge of cultural and historical contexts, institutional codes and conventions and genre patterns.
- **Coursework (30%)** – Students respond to a set brief through the research, planning, creation and evaluation of their own media products across two platforms. E.g. Creating a 3-minute music video alongside a magazine front cover that promotes a chosen band.

## Entry Requirements

Grade 5 in GCSE Media (If studied) or grade 5 in English and Mathematics. Enthusiasm and a serious interest in both the practical and theoretical sides of the course is a must. Students do not have to have taken Media at GCSE level, but this is preferred due to the demands of the course. Above all however, students must be actively engaged with the media and be open to engaging with a wide range of products from all manner of viewpoints, platforms and sources.

## Progression

Media Studies provides students with an ideal platform for pursuing careers in the creative and digital arts, animation, and the film and television industries, as well as journalism, web design, advertising and marketing. After gaining a broad understanding at A-Level, Further Education courses allow students to further specialise in areas of the industry they are most passionate about.



## Further Information

[cmooney@bulmershe.wokingham.sch.uk](mailto:cmooney@bulmershe.wokingham.sch.uk)

Mr C Mooney

[www.eduqas.co.uk/qualifications/media-studies/as-a-level/](http://www.eduqas.co.uk/qualifications/media-studies/as-a-level/)

***“The media is such an important part of our everyday lives that being able to study and understand the way that it works and affects audiences is not just fascinating, but also very important”.*** Grace Bedford



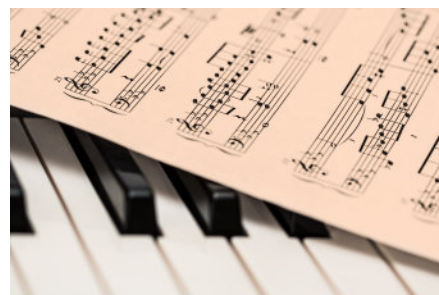
The aim of this OCR Music course is to focus working on building upon the musical successes achieved in GCSE. Straightforward in its structure, the course will assess students through practical performances, composition and one externally examined paper. In addition to practical work, students will investigate, analyse and evaluate music and its features. The course provides students with an opportunity to develop critical and creative thinking, cultural, aesthetic and emotional awareness, and the ability to make music individually and as part of a group.

## Course Content

**Component 1: Performing (Either 25% or 35%)** Perform a six minute recital (10 minutes if component 1 is worth 35%) consisting of one or more pieces on your chosen instrument/voice.

**Component 2: Composing (Either 35% or 25%)** Compose two compositions. One of these compositions will be composed to a brief set by the exam board. Three short technical exercises (Bach Chorales) if component 2 is worth 35%.

**Component 3: Listening and appraising (40%)** Application of knowledge through context to six areas of study, each with three set works on the following topics: Instrumental Music of Haydn, Mozart and Beethoven, Popular Song (Blues, Jazz, Swing, Big Band), Religious Music of the Baroque Period, Programme Music 1820 – 1910.



## Assessment

Component 1: Performing is externally assessed.  
Component 2: Composing is externally assessed.  
Component 3: Listening and appraising exam consists of a written examination at the end of Year 13.

## Entry Requirements

A minimum grade 6 in Music at GCSE.  
Additional qualifications in grade 5+ Music Theory and grade 5+ Practical examinations is beneficial, though not essential. Regular instrumental/vocal tuition is essential.

## Progression

The content of the course allows students to develop a holistic understanding of music, enabling them to progress into undergraduate music or music related degree courses. This course is specifically designed to give students a wide knowledge of styles, practitioners and advance music theory and would aid in bridging the gap between GCSE and a BA degree.

## Further Information

[awicks@bulmershe.wokingham.sch.uk](mailto:awicks@bulmershe.wokingham.sch.uk)

Mr A Wicks

<https://www.ocr.org.uk/Images/219397-specification-accredited-a-level-gce-music-h543.pdf>

*“If I were not a physicist, I would probably be a musician. I often think in music. I live my daydreams in music. I see my life in terms of music.” Albert Einstein*



# Photography

The Photography A-Level course is designed to develop intellectual, imaginative and expressive skills, as well as aesthetic and critical understanding. Our students are culturally diverse young people who are given every opportunity to express themselves through their photography work.

## Course Content

### Year 12 - 60% of total A-Level

Component 1 - Coursework portfolio

- You will experience a wide range of different materials and approaches and produce work that demonstrates breadth and depth of skills and understanding.
- You will also produce an extended collection of work that will develop from an initial starting point to a final outcome.

Component 1 - Personal Investigation

- You will produce a practical investigation with written elements that lead to a final piece or pieces.

### Year 13 - 40% of total A Level

Component 2 - Externally set assignment

- You are given the choice of eight starting points and will undertake fifteen hours unaided, supervised time to complete a final piece.

## Entry Requirements

Students must have studied GCSE Photography and achieved a minimum grade 5

## Progression

Photography A-Level is an ideal opportunity for those seeking to work within the visual arts. In addition, students may pursue diplomas and degrees in Fine Art, Art History, Graphic Design/ Illustration, Fashion, Journalism, Installation, Film/ Media, Advertising, Animation, Product/ Industrial Design, Architecture, Digital/ Web Design, Photography.

## Further Information

[sdavis@bulmershe.wokingham.sch.uk](mailto:sdavis@bulmershe.wokingham.sch.uk)

Mr S Davis

[www.aqa.org.uk/subjects/art-and-design/as-and-a-level/art-and-design](http://www.aqa.org.uk/subjects/art-and-design/as-and-a-level/art-and-design)



*“To me, photography is an art of observation. It’s about finding something interesting in an ordinary place... I’ve found it has little to do with the things you see and everything to do with the way you see them.” - Elliott Erwitt*



# Physical Education



A-Level



AQA

A-Level Physical Education enables students to play to their strengths and gain dynamic theoretical and practical skills for further education or work. Students will cover a variety of course content from biomechanics to sports psychology, within the theory context, as well as being assessed in their strongest sport as a performer or coach in the practical context.

A-Level Physical Education is a natural progression for those students who have undertaken AQA GCSE PE in Key Stage 4. The course is a blend of theory and practical lessons; theory makes up 70% of the overall mark and practical 30%.

## Course Content

- Applied anatomy and physiology
- Skill acquisition
- Sport and society
- Exercise physiology
- Biomechanical movement
- Sport psychology
- Sport and society and the role of technology in physical activity and sport

## Assessment

Paper 1 (2 hours / 105 marks): Factors affecting participation in physical activity and sport (Applied Anatomy and Physiology / Skill Acquisition / Sport and Society).

Paper 2 (2 hours / 105 marks): Factors affecting optimal performance in physical activity and sport (Exercise Physiology and Biomechanics / Sport Psychology / Sport and Society and Technology in Sport).

Practical Performance (90 marks): Students assessed as a performer or coach in the full sided version of one activity plus a written/verbal analysis of performance.

## Entry Requirements

Grade 5 in GCSE PE and grade 5 in Biology or Combined Science.

Essential - You must be playing competitive sport outside of school in one of the AQA specification.

## Progression

A-Level Physical Education students that are successful can go on to study sport and physical activity further in areas such as Sports and Exercise Science, Physical Education, Sports Coaching, Sports Physiotherapy, Sports Psychology and Sports Journalism.

## Further Information

bhird@bulmershe.wokingham.sch.uk - Mr B Hird

<https://filestore.aqa.org.uk/resources/pe/specifications/AQA-7582-SP-2016.PDF>

**“Hard work beats talent when talent fails to work hard.” Kevin Durant**

### AQA Sports

Acrobatic Gymnastics	Canoeing	Futsal	Inline Roller Hockey	Rowing	Squash
Amateur Boxing	Cricket	Gaelic Football	Hurling	Rugby League	Swimming
Football	Cycling	Golf	Ice Hockey	Rugby Union	Table Tennis
Athletics	Dance	Gymnastics	Kayaking	Sailing	Trampoline
Badminton	Diving	Handball	Lacrosse	Sculling	Triathlon
Basketball	Equestrian	Hockey	Netball	Skiing	Volleyball
Camogie	Figure Skating	Ice Hockey	Rock Climbing	Snowboarding	Water Polo
Windsurfing					

### Specialist Activities

Blind Cricket	Goal Ball	Polybat	Wheelchair basketball
Boccia	Powerchair Football	Table Cricket	Wheelchair Rugby



The  
Bulmershe  
School



From the birth and death of stars to the fleeting interactions of tiny particles, Physics studies how our world works. To do this it uses ideas ranging from Force and Energy, easily understood and everyday, to Strangeness and Charm, rather more abstract and fanciful! It is a fascinating subject, driven by the desire to find out how and why matter behaves the way it does. Physics is not only interesting; it is also highly marketable. With an A-Level in Physics you have proved that you possess a wide range of key skills, exactly what universities and employers are looking for today.

## Course Content

### Year 1 Outline:

- Module 1 – Development of Practical Skills in Physics
- Module 2 – Foundations of Physics
- Module 3 – Forces and Motion
- Module 4 – Electrons, Waves and Photons

### Year 2 Outline (All of the above plus the following modules):

- Module 5 – Newtonian World and Astrophysics
- Module 6 – Particles and Medical Physics



## Assessment

Paper 1 - Modelling Physics Modules 1, 2, 3 & 5.	2h 15min, 100 marks = 37%
Paper 2 - Exploring Physics Modules 1, 2, 4 & 6.	2h 15min, 100 marks = 37%
Paper 3 - Unified Physics All modules.	1h 30min, 70 marks = 26%

**Practical Endorsement for Physics** Awarded at the end of the A-Level course for completing practical work from 12 different skills groups and showing practical competence

## Entry Requirements

Essential: grade 6 in Physics or grade 6,6 in Combined Science and grade 6 in Mathematics

## Progression

Physics will suit someone who is fascinated by how things work, by fundamental questions about the way the world is and by the exactness of science. It is recommended that students have a grade 7 in GCSE Physics and Mathematics. Students will find the course less demanding if they are also studying Mathematics at A-Level. If you pursue Physics at university you will find that Physics graduates are in great demand as pilots, engineers, medical researchers and forensic scientists – any career where detailed analytical skills are required.

## Further Information

[psharland@bulmershe.wokingham.sch.uk](mailto:psharland@bulmershe.wokingham.sch.uk) – Mr P Sharland  
[www.ocr.org.uk/qualifications/as-a-level-gce-physics-a-h156-h556-from-2015/](http://www.ocr.org.uk/qualifications/as-a-level-gce-physics-a-h156-h556-from-2015/)

***“Equipped with his five senses, man explores the universe around him and calls the adventure Science.” Edwin P. Hubble***



Politics impacts our lives every day, and in many different ways. How much funding schools, hospitals and local authorities receive, the laws we live by and our relationships with other countries.

In Year 12 students will study the role of Parliament, the Prime Minister and the Cabinet and how the UK is trying to improve participation in the political process. Students will also study core political ideas of Liberalism, Conservatism and Socialism as well as non-core political ideas such as anarchism, ecologism, feminism, multiculturalism and nationalism.

In Year 13 students will study a comparative unit: Politics in the USA, including the different branches of the US Government including Congress, the US presidency, the Supreme Court as well as civil rights and democracy and participation.

## Course Content

**Component 1:** UK Politics: Political Participation and Core Political Ideas.

**Component 2:** UK Government: UK Government and Non-core political ideas.

**Component 3:** Comparative Politics: USA.

## Assessment

Each component is assessed through a two-hour written examination. Each paper is a third of your grade.



## Entry Requirements

Grade 4 in Maths and English

## Progression

Politics A-Level is ideal for anyone wanting a career in journalism, law or the civil service as well as public relations, public affairs or the charity sector. Possessing an understanding of how decisions at the highest level are made and the different aspects of the UK government is vital.

## Further Information

Head of Politics: Mr R Allger  
[rallger@bulmershe.wokingham.sch.uk](mailto:rallger@bulmershe.wokingham.sch.uk)

<https://qualifications.pearson.com/content/dam/pdf/A%20Level/Politics/2017/Specification%20and%20sample%20assessments/A-level-Politics-Specification.pdf>

# Psychology

Psychology is the science of mind and behaviour, and this specification has been designed to provide a broad introduction to the scope and nature of psychology as a science. Studying psychology helps students to better understand their own behaviour and thought processes, and of those around them.

## Course Content

### Year 1 Modules:

**Component 1:** Psychology: past to present. Detailed study of 5 major approaches in psychology: Psycho-dynamic, Cognitive, Biological, Behaviourist, Positive, including key research and contemporary debate.

**Component 2:** Investigating Behaviour; includes research methods and detailed analysis of research from Social and Developmental approaches.

### Year 2 Modules

**Component 2:** More in-depth study of research methods and detailed analysis of research from Social and Developmental approaches. A-Level students required to carry out 2 psychological investigations of their own.

**Component 3:** Issues and debates in Psychology and topics: Forensic (criminal) Psychology, Schizophrenia and Stress.

## Assessment

Assessed through examinations at the end of the second year of the course. A-Level: Papers 1, 2, and 3: 2 hours 15 minutes each (short answer and extended writing questions on each paper)

## Entry Requirements

Essential – grade 6 in GCSE Psychology (if studied) or grade 6 in English and Mathematics

## Progression

Psychology is a subject which is studied at degree level or as part of many joint honours programmes. Qualifications in psychology are useful in various careers including teaching, medicine, law, the police and prison service, advertising and business. Postgraduate research is another option.

## Further Information

[eoreilly@bulmershe.wokingham.sch.uk](mailto:eoreilly@bulmershe.wokingham.sch.uk)

Miss E O'Reilly

[www.eduqas.co.uk/qualifications/psychology/](http://www.eduqas.co.uk/qualifications/psychology/)

**“Psychology is the science of the intellects, characters and behaviour of animals including man.” Edward Thorndike**



Spanish A-level offers a two year course which develops the knowledge and skills acquired at GCSE and promotes further independent study. The course is designed to:

- Give an insight into the life and culture of Spanish-speaking countries.
- Encourage confident and effective communication in the language.
- Enable development of interest in and enthusiasm for, language learning.
- Allow acquisition of knowledge, skills and understanding for practical use, for further study and/or for employment.

### Course Content

- Four themes of study
- Students also study a book and a film.
- Students have to do a research project which they present as part of the Speaking exam in Year 13.

### Assessment

The A-Level exam consists of three papers:

**Paper 1:** Listening, reading and translation. The paper is worth 80 marks, is 2 hours in length and accounts for 40% of the final grade.

**Paper 2:** Written response to works and translation. The paper is worth 120 marks, is 2 hours 40 minutes and accounts for 30% of the final grade.

**Paper 3:** Speaking which is worth 72 marks and the exam lasts for between 21 and 23 minutes, accounting for 30% of the final grade.

### Entry Requirements

Minimum grade 6 at GCSE Spanish

### Progression

Students often go on to study modern languages as a 'pure' degree course, or combined with subjects such as business studies, engineering, history or politics. Many of tomorrow's workforce will need language skills. Past students are now pursuing further studies in Chinese, Arabic, Law and Business Studies, as well as developing careers in fields as varied as Banking, Finance, Education, Scientific Research, Media, Computing and Marketing. "Four in ten (43%) of employers surveyed said candidates who spoke a second language had an advantage over monolingual people when applying for jobs".



### Further Information

[khudson@bulmershe.wokingham.sch.uk](mailto:khudson@bulmershe.wokingham.sch.uk)

Miss K Hudson

<https://qualifications.pearson.com/en/qualifications/edexcel-a-levels/spanish-2016.html>

**"Languages are difficult but fun and they can help you in all facets of life. They are highly regarded by all good universities."**

# Applied Science

The course covers a wide range of topics across Biology, Chemistry, and Physics. This Applied Science course is very practical with many opportunities to implement the theory that you learn. You will complete laboratory based practical assignments, supported self study assignments, presentations and discussions that are based on real workplace situations, activities and careers. It is intended for students wishing to progress to applied science careers such as forensics, life sciences or biomedical science.



## Course Content

**Unit F180** Fundamentals of Science (Biology, Chemistry, Physics and Practical Work)

**Unit F181** Science in Society

**Unit F182** Investigating Science (Planning, Performing, Analysing and Evaluating an Investigation)

Plus two units from:

**Unit F183** Analytical Techniques in Chemistry

**Unit F184** Environmental Studies

**Unit F185** Forensic Biology

**Unit F186** Medical Physics

## Assessment

Units F180 and F181 are assessed by external examinations

Units F182, F183, F184, F185 and F186 are assessed by as assignment portfolio

The course as a whole is graded as Pass Merit or Distinction. It carries the same UCAS tariff as one A-Level subject

## Entry Requirements

Grade 5 in Combined Science or Separate Sciences, grade 4 in English, grade 4 in Mathematics.

## Progression

The OCR Extended Certificate in Applied Science will enable you to progress to degree courses in associated areas. You could, alternatively, go into employment in roles such as quality control technician/analyst; working in a hospital as a medical physics technician; working in a research laboratory in the development of new drugs; working for a science magazine or journal, etc.

## Further Information

[gburrows@bulmershe.wokingham.sch.uk](mailto:gburrows@bulmershe.wokingham.sch.uk)

Mr G Burrows

*“The Science of today is the technology of tomorrow” Edward Teller*

This course provides students with a broad introduction to the business sector, and should encourage them to develop skills, knowledge and understanding in realistic business contexts, such as discovering the problems and opportunities faced by local, national and international businesses, interpreting financial accounts or planning a marketing strategy.

## Course Content

AS Level equivalent - Cambridge Technical Certificate

- Unit 1: The Business Environment
- Unit 5: Marketing and Market Research

A2 Level equivalent - Cambridge Technical Extended Certificate

- Unit 2: Working in Business
- Unit 3: Business decisions
- Unit 4: Customers and Communication

## Assessment

Unit 1 is mandatory and externally assessed, taking the form of a 2 hour written exam worth 90 marks. It is set and marked by OCR. This unit has to be passed in order to achieve a pass grade overall.

Unit 5 is an internal coursework unit and is internally assessed.

Unit 2 is mandatory and externally assessed, taking the form of a 1 hour and 30 minute written exam worth 60 marks. It is set and marked by OCR. This unit also has to be passed in order to achieve a pass grade overall.

Unit 4 is an internal coursework unit and is internally assessed.

Unit 3 is an external examination

## Entry Requirements

Essential – grade 4 in GCSE English and Mathematics, a strong work ethic and a willingness to succeed on this course.

## Progression

This course is designed to support progression to employment following further study at university. It can also support students progressing to employment directly, or via an apprenticeship in the business, management, finance, marketing, administration, accountancy, hospitality or customer service areas.

## Further Information

[parko@bulmershe.wokingham.sch.uk](mailto:parko@bulmershe.wokingham.sch.uk)

Mr P Arko

[www.ocr.org.uk/qualifications/vocational-education-and-skills/cambridge-technical-business-level-3-certificate-extended-certificate-foundation-diploma-diploma-05834-05837-2016-suite/](http://www.ocr.org.uk/qualifications/vocational-education-and-skills/cambridge-technical-business-level-3-certificate-extended-certificate-foundation-diploma-diploma-05834-05837-2016-suite/)

*“Your attitude determines your direction.”*



How do we explain why people commit crime? What different types of crime take place in our society? How do we decide what behaviour is criminal? What is the difference between criminal behaviour and deviance? What happens to those who commit a crime? These and many other questions will be answered in this Criminology course which combines elements of psychology, law and sociology.

## Course Content

### Unit 1 Changing awareness of crime – Controlled Assessment

This unit will enable students to demonstrate understanding of different types of crime, influences on perceptions of crime and why some crimes are unreported. The aim of this unit is for students to plan campaigns for change relating to crime; for example, to raise awareness, change attitudes or change reporting behaviour.

### Unit 2 Criminological Theories - Exam

By the end of this unit students will have gained the skills to evaluate a range of criminological theories and know the debates within the different theories. They will understand how changes in criminological theory have influenced policy. Students will also have gained the skills to apply the theories to a specific crime or criminal in order to attempt an understanding of the behaviour.

### Unit 3 Crime Scene to Courtroom – Controlled Assessment

By the end of this unit students will develop skills to review criminal cases, evaluating the evidence in the cases to determine whether the verdict is safe and just. They will know the processes involved from when a crime is committed all the way through to the investigation and when it goes to court.

### Unit 4 Crime and Punishment - Exam

Through this unit, students will learn about the criminal justice system in England and Wales and how it operates to achieve social control. They will have gained an understanding of the organisations which are part of our system of social control and their effectiveness in achieving their objectives.



## Assessment

Units 1 and 3 are internally assessed in the form of controlled assessments under strict exam conditions, marked by teacher and then externally verified by the exam board moderator.

Units 2 and 4 are externally assessed in the form of written exams that last 1hr 30 minutes each. Assessment includes short and extended answer questions, based on stimulus material and applied contexts.

## Entry Requirements

Grade 5 or above in GCSE English and grade 4 in Mathematics

## Progression

This qualification allows students to progress into Higher Education degrees such as: Criminology, Law, Psychology and Sociology.

## Further Information

[ereilly@bulmershe.wokingham.sch.uk](mailto:ereilly@bulmershe.wokingham.sch.uk) – Miss E O' Reilly

<https://www.wjec.co.uk/media/21xjkr24/wjec-applied-diploma-in-criminology-spec-e-22-06-22-1.pdf>

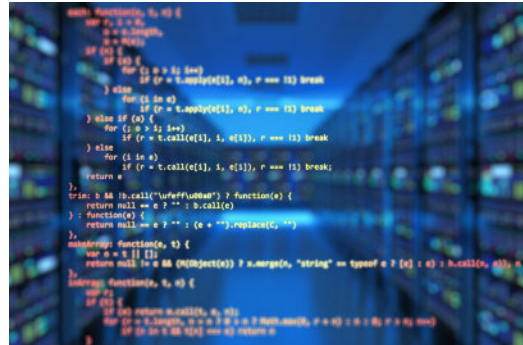
*“To tackle crime, we need to understand why it happens, what people feel about it, and how it impacts on individuals and society. Exploring these issues from different angles is an essential part of discovering more effective deterrents and better forms of rehabilitation.” Dr Anne Foley, Professor of Criminology and Criminal justice, University of Bristol*

OCR Level 3 Cambridge Advanced Nationals Alternative Academic Qualification (AAQ) in IT: Data Analytics (Extended Certificate) is most suited to students planning a career in the fast-growing IT industry. It is a nationally recognised Extended Certificate that equips students with the essential computing skills, knowledge, and understanding needed for IT-focused roles. This qualification is approved for the UCAS tariff, allowing students to progress to Higher Education if they choose to do so.

## Course Content

Students will develop the core knowledge and skills required by the IT sector. This course prepares students for a range of specialist career pathways, including:

- **Data Analysis and Science:** Data Analyst, Data Scientist, Quantitative Analyst, Risk Analyst.
- **Engineering and Architecture:** Data Architect, Data Engineer, Machine Learning Engineer.
- **Business Intelligence:** Business Intelligence Analyst, Marketing Analytics Manager, Financial Analyst.
- **Data Management:** Database Administrator, Data Governance Analyst, Data Visualisation Engineer, Spreadsheet Application Developer.



## Assessment

Students must complete a total of five units to achieve this qualification.

- Two mandatory externally assessed units F200 and F201
- One mandatory non-exam assessment (NEA) unit F202
- Two optional NEA units F204 and F205

The two mandatory units are F200: Fundamentals of data analytics and F201: Big data and machine learning

The mandatory NEA unit is F202: Spreadsheet data modelling

The two optional NEA units offered by the department are F204: Data and the Internet of Everything (IOE) and F205: Data visualisation

## Entry Requirements

Students must achieve a minimum of Grade 4 in GCSE English and Mathematics. It is strongly advised that students have also studied some form of ICT or Computing during Key Stage 4.

## Progression

**Apprenticeships:** Including roles such as Network Engineer or Software Developer.

**Employment:** Areas such as technical support, digital technologies, application development, data analysis, and cyber security. **Higher Education:** University study in IT, Computing, or related subjects

## Further Information

[emorden@bulmershe.wokingham.sch.uk](mailto:emorden@bulmershe.wokingham.sch.uk) – Mr E Morden

<https://www.ocr.org.uk/qualifications/cambridge-advanced-nationals/it-data-analytics-level-3-h019-h119/#extended-certificate>



A BTEC Level 3 National qualification in Sport enables students to learn about the theory behind sport in great depth. It gives them the opportunity to gain the experience required for use in the work place or as a stepping stone to higher education. The variety of the subject gives students the opportunity to study different areas, from anatomy and physiology to reflecting on their own practical sports performance.

The Level 3 Sports courses are a natural progression for those students who have undertaken a BTEC First in Sport in Years 10 & 11 or GCSE PE. The course is a blend of theory and practical lessons.

## Course Content

- **Unit 1:** Anatomy and Physiology (externally assessed)
- **Unit 2:** Fitness Training and Programming for Health, Sport and Well-being (externally assessed)
- **Unit 3:** Professional Development in the Sports Industry (internally assessed)
- **Unit 5:** Application of Fitness Testing (internally assessed)

## Assessment

**Unit 1** is an externally assessed unit in the form of a written examination (80 marks) that lasts 90 minutes and is marked by Pearson.

**Unit 2** is an externally assessed unit where the task is set and marked by Pearson and completed under supervised conditions. It will be a written submission worth 60 marks.

**Unit 3** and **Unit 5** are both internally assessed units where the work is set and assessed by the PE Department and verified by Pearson.

## Entry Requirements

Grade 4 in GCSE PE  
Level 2 Merit/Distinction in Vocational Sport  
and 4 in GCSE Maths and English



## Progression

With the national recognition of Extended Certificate courses such as this, Sport as an option could lead on to courses at university, such as Sports Management or Sports and Exercise Science. It could also lead onto apprenticeships or careers in sports coaching, physiotherapy, sports management and PE teaching.

## Further Information

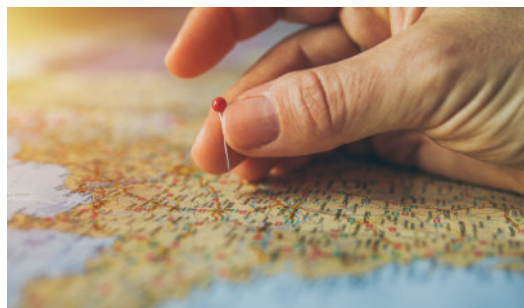
[bhird@bulmershe.wokingham.sch.uk](mailto:bhird@bulmershe.wokingham.sch.uk) - Mr B Hird

<https://qualifications.pearson.com/en/qualifications/btec-nationals/sport-2016.html>

***"BTEC Sports inspires me to become the best I can in activism and strive for my goal like never before, this academic course teaches me not just the importance of my passion but to keep focused and active in all I do. This ravishing subject explores your different body types in written as well as physical lessons highlighting the enjoyment of this course". - Imranvir Kaur Guraya***



The Travel and Tourism Industry is the fastest growing industry in the world offering **excellent work opportunities** for students. Our BTEC National Extended Certificate in Travel and Tourism Level 3 qualification enables students to develop vocational and



transferable skills in the Travel and Tourism Industry such as **destinations and attractions, eco-tourism, itineraries, data analysis, tour operation and travel booking, digital technology, business practice and marketing and promotions**. The certificate is equivalent to one A-Level and is also equivalent in UCAS points.

In addition to transferable skills, the subject specific requirements are highly regarded by higher education providers and employers. For example, you will learn how to analyse information and data, identifying trends and the

potential impact of different factors on the industry and its customers, which supports the necessary skills for progress into apprenticeship, higher education, straight into vocational employment, self-employment or training.

## Course Content

- **Unit 1:** The world of travel and tourism
- **Unit 2:** Global destinations
- **Unit 3:** Principles of marketing in travel and tourism
- **Unit 9:** Visitor attractions

## Assessment

**Unit 1** is mandatory and is externally assessed unit in the form of a written exam that last 1.5 hours. It is worth 75 marks and the assessment is set and marked by Pearson.

**Unit 2** is a mandatory unit and is also externally assessed. It is set and marked by Pearson and you will investigate the features and appeal of global destinations, travel planning and the factors and trends affecting the changing popularity of global destinations. It is assessed under supervised conditions. You will be given information two weeks before a supervised assessment period to carry out research. It is worth 60 marks.

**Unit 3** is a mandatory internally assessed unit and you will focus on how to develop a successful marketing plan for use by travel and tourism organisations to attract and engage customers.

**Unit 9** is an internal unit where you will investigate the nature and role of built and natural visitor attractions, their appeal, popularity, response to diverse visitor needs and the importance of delivering a memorable visitor experience.

## Entry Requirements

Essential – grade 4 in GCSE English and Mathematics

## Progression

This course is designed to support vocational progression to employment directly, or via an apprenticeship in the travel and tourism sector (for example, in hospitality, hotel, cruise ship, airport, holiday rep, visitor attraction or event management). Students may also choose to develop their learning at university with an International Travel and Tourism degree, or to combine their learning with a business/digital-based degree

## Further Information

[twarner@bulmershe.wokingham.sch.uk](mailto:twarner@bulmershe.wokingham.sch.uk) Miss Warner

[Pearson Travel & Tourism Qualification](#)

***“BTEC Travel & Tourism at Level 3 is challenging but interesting and teaches you things about different countries and cultures you didn’t know! It opens up the world to you and makes you want to go out and explore the world.”***

# Extended Project Qualification

After students have joined the Bulmershe Sixth Form, they may opt to do an Extended Project Qualification (EPQ) in addition to their A-Level subjects. The EPQ is a project carried out on a topic of your choice. By engaging in independent research, students cultivate a strong academic foundation, not only distinguishing them in university applications but also equipping them with transferable skills crucial for success in diverse career paths. Through the EPQ, students gain a competitive edge and lay the groundwork for continued academic and professional excellence, including the ability to manage complex projects, conduct thorough research and present information coherently.

## Entry Requirements

The EPQ must be started when in Year 12, and students must have gained at least one grade 6 in their GCSE English (Literature or Language) exam.

## What is involved?

The final project will be a dissertation (essay) of approximately 5,000 words. To produce this you will:-

- Attend lessons on Wednesday afternoons to learn how to carry out your project.
- Choose a topic to study and get your enquiry question approved.
- Meet regularly with your supervisor (a Bulmershe teacher) to review progress.
- Complete an activity log to record your research process.
- Plan, research and write up your project
- Prepare and deliver a presentation; answer questions on your project.

## How is the EPQ assessed?

The dissertation will be assessed by your supervisor and the presentation will be assessed by a panel of Bulmershe staff. The EPQ is worth 50% of an A-Level grade.

## Recent Bulmershe EPQ topics:

- Was Mathematics discovered or invented?
- Should cleft lip and palate be considered valid grounds for abortion in the UK?
- Is marketing toys to children unethical?
- Are footballers worth what they are paid?
- How far are Disney villains influenced by Shakespeare?
- To what extent is hatred spread by the media?

## Why do an Extended Project Qualification?

It will help you to:-

- Develop and improve as a critical, reflective and independent learner.
- Develop and apply decision-making and problem-solving skills.
- Extend your planning, research and presentation skills.
- Develop and apply skills creatively, demonstrating initiative and enterprise.
- Use your learning experiences to support your personal aspirations for higher education and career development.



The  
**Bulmershe  
School**

INSPIRING POTENTIAL,  
ACHIEVING TOGETHER

**The Bulmershe School**

Woodlands Avenue  
Woodley  
RG5 2EU

**Reception:** 0118 935 3353

**Email:** [reception@bulmershe.wokingham.sch.uk](mailto:reception@bulmershe.wokingham.sch.uk)

**Website:** [www.thebulmersheschool.com](http://www.thebulmersheschool.com)

The Bulmershe School is part of the Corvus Learning Trust



Scan QR to  
apply