

## Class Teacher Role Profile

<b>Role Title</b>	Class Teacher	<b>Reporting to</b>	Headteacher
<b>Section</b>	Millbridge Primary Academy		
<b>Contract type</b>	Permanent	<b>Grade / Salary</b>	MPR/UPR

### Part A – JOB DESCRIPTION

<b>Overall purpose of role</b>	<p>As a Class Teacher you will implement and deliver an appropriately broad, balanced, relevant and differentiated curriculum for students and ensure delivery of high quality teaching and learning for which you will be accountable.</p> <p>You will be required to meet the general requirements of this post, as specified in the School Teachers’ Pay and Conditions Document. In addition, you will be required to fulfil any reasonable expectations from the Head of School.</p> <p>The post will require you to work in partnership with the Senior Leadership Team, governors and staff to ensure the continuous improvement of the Academy.</p>
<b>Safeguarding Requirements</b>	<p>This post requires the post holder to work in settings with children and young adults. Any employment offer is therefore subject to the results of an Enhanced Disclosure from the Disclosure and Barring Service (DBS). People who may have contact with younger children (i.e. primary school age) are also required to complete a declaration about family or other members of their household.</p> <p>Applicants MUST complete the MAT’s standard application form to be considered, will be required to provide evidence of identity and qualifications and offers of employment will be subject to satisfactory references. For applicants who work or have recently worked in a school, one of the references must be from the Head of School.</p>

<b>Key Outputs</b>
<ol style="list-style-type: none"> <li>1. To teach classes of pupils, ensuring that planning, preparation, recording, assessment and reporting meet their varying learning and social needs.</li> <li>2. To monitor and support the overall progress and development of pupils as a teacher, setting pupils individual improvement goals as appropriate.</li> <li>3. To facilitate and encourage a learning experience which provides pupils with the opportunity to achieve their individual potential.</li> <li>4. To contribute to raising standards of pupil achievement and attainment.</li> <li>5. To promote and actively support the school’s responsibilities towards safeguarding.</li> <li>6. To provide and maintain a stimulating, well ordered and purposeful learning environment and to take collective responsibility for the overall appearance of the school.</li> <li>7. To teach pupils according to their educational needs, including the setting and marking of work to be carried out by pupils in school and elsewhere.</li> </ol>

8. To maintain discipline in accordance with the school's procedures and to encourage good practice with regard to punctuality, behaviour and standards of work.
9. To ensure the learning needs of individual pupils are met, particularly vulnerable groups, such as those with SEN, disabilities or disadvantages pupils.
10. To effectively liaise with staff, parents and others to support pupils learning.
11. To organise support staff effectively in targeting support and raising standards.
12. To assess, record and report on the attendance, progress, development and attainment of pupils and to keep such records as are required.
13. To use the outcomes of on-going assessment to help shape future planning.
14. To self-evaluate and undertake professional development to help achieve the highest possible standards in role.
15. To reward and celebrate pupils' success.
16. To attend a range of staff and other meetings and events such as parents' evenings and complete additional administration tasks as required by the role.
17. To undertake any other duties associated with the role, as may be decided by the Head of School.

**Dimensions** (Financial/Statistical/Mandates/Constraints/No. of direct reports)

- Range of staff approximately 35 across the whole school.
- Range of pupils approximately 300.

**Work/Business contacts**

**Internal:** All teachers and support staff to advise how effectively to support pupils to achieve their Personal best.

**External:** Parents and Families & other agencies.

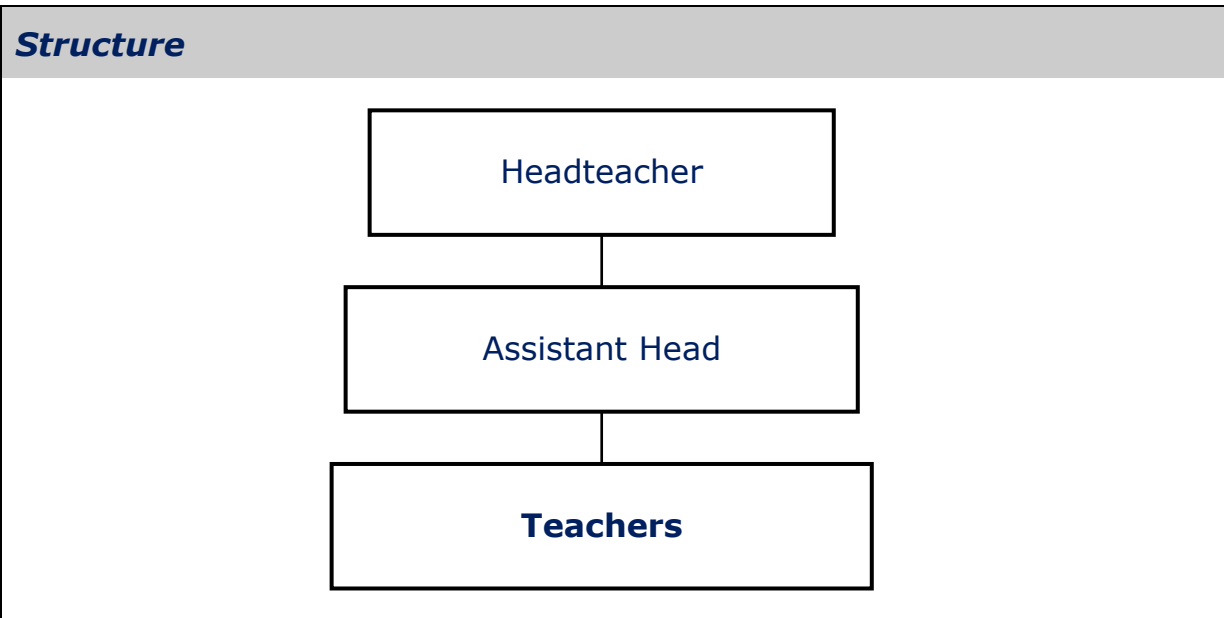
**Expertise in Role Required (At selection - Level 1)**

**Essential or Desirable**

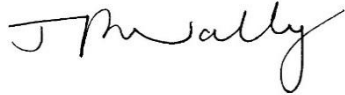
- |  |           |
|--|-----------|
| • Qualified Teacher Status   | Essential |
| • Degree or equivalent   | Essential |
| • Successful experience or the ability to teach at KS2/KS1   | Essential |
| • Evidence of continuing professional development and a willingness to undertake further development as appropriate  | Essential |
| • Evidence of/potential to become an excellent classroom practitioner, capable of inspiring pupils and forming great relationships with colleagues & parents | Essential |
| • Able to inspire and motivate pupils  | Essential |
| • Knowledge of assessment processes and tracking systems and how they can be used to adapt planning & delivery of the curriculum to improve pupil progress.  | Essential |
| • Able to monitor and evaluate impact of interventions and strategies  | Essential |
| • Working knowledge of the National Curriculum & fully conversant with good primary practice   | Essential |
| • Knowledge of innovative teaching and learning strategies   | Desirable |
| • Experience of/able to implement SEN provision in a class setting   | Essential |
| • Highly competent in ICT and the use of computers   | Desirable |

• Excellent communication skills	Essential
• Excellent behaviour management skills	Essential
• Commitment to the safeguarding of children	Essential
• A willingness to be fully involved in the wider life of the school including extra-curricular activities.	Desirable
<b>Other (Physical, mobility, local conditions)</b>	
• Is willing to work flexibly within scope of overall hours, e.g. evening meetings.	Essential
• Able and willing to travel to meet the needs of the role.	

<b>Expertise in Role - After initial and advanced development</b>	
• Evidence of monitoring and evaluating interventions and strategies	
• Evidence of data analysis and strategies used to improve performance	
• Evidence of on-going continuing professional development.	



**Signatures**

Approved by : : CEO 

Approved by : Post Holder/or Representative