



Welcome to Excalibur Academies Trust



About Excalibur



Our Vision

Founded in 2012, Excalibur Academies Trust has grown from two schools in Marlborough, Wiltshire, to 20 schools reaching from Bristol to Reading along the M4 corridor, providing high quality education to 10,000 children from age 2 to age 18.

Our vision is to provide an all-through education in local hubs, with a focus on the best teaching, a broad and exciting curriculum and an outward-facing global perspective. We believe in investing in our staff to ensure we attract and retain talented, dedicated people who are committed to changing children's lives for the better.

With a strong track record of raising the achievement of disadvantaged pupils across the trust, it is our mission to promote social mobility and personal fulfilment through the transformative power of education. Our growth strategy is based on our hub model and building the capacity to provide strong support and opportunities to other schools who share our vision.

Our Values

Ambitious

High expectations and aspirations for everyone; learning from the best and thinking big; an optimistic outlook.

Empowering

Believing and investing in our people; developing talent and potential; celebrating diversity and individuality; working collaboratively and celebrating achievement.

Ethical

Doing what is right and challenging what is wrong; showing kindness and compassion; promoting wellbeing and sustainability.



Our Support

All schools within Excalibur receive high calibre professional support services including school improvement, finance, HR, legal, IT, governance, communications/media and estates business partnering facilities.

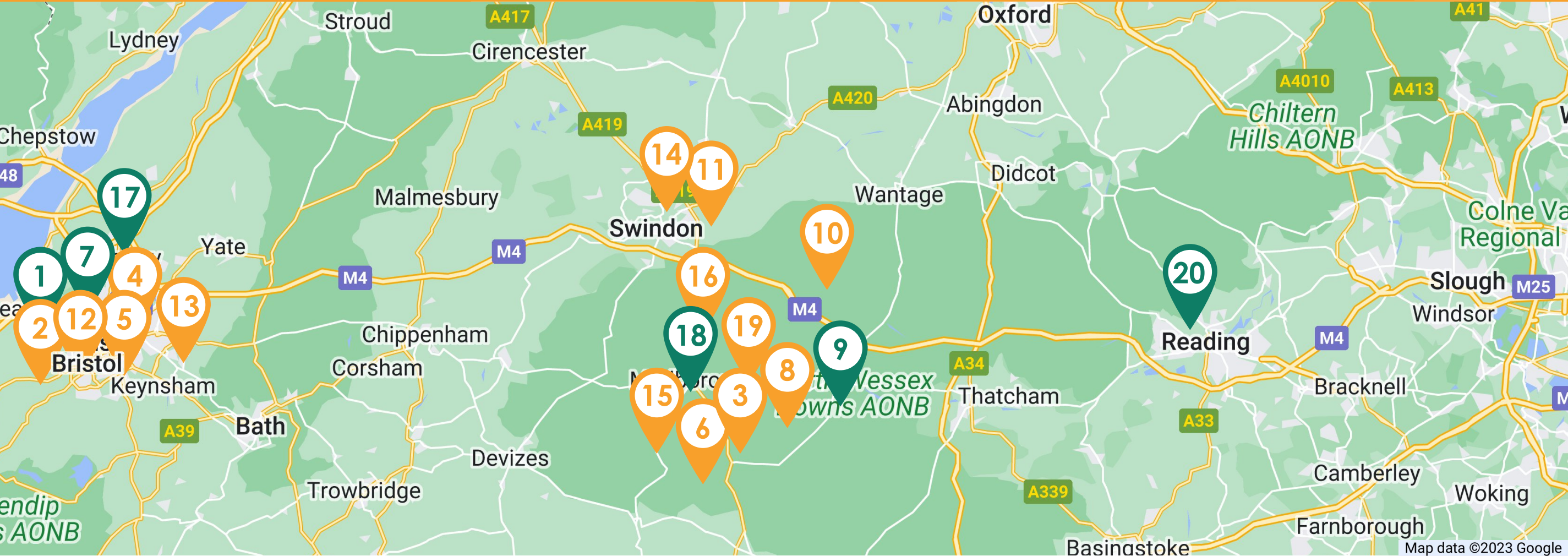
Staff have access to our professional development hub; we also provide career guidance, access to professional development courses and coaching. Furthermore, there are networks of staff across the Trust at all levels, from classroom teachers and subject leaders to TAs and School Business Managers.

Schools receive tailored support to produce an individual Academy Improvement Plan (AIP) which includes a dashboard of key information, data highlighting key focus groups and data targets for the new academic year.

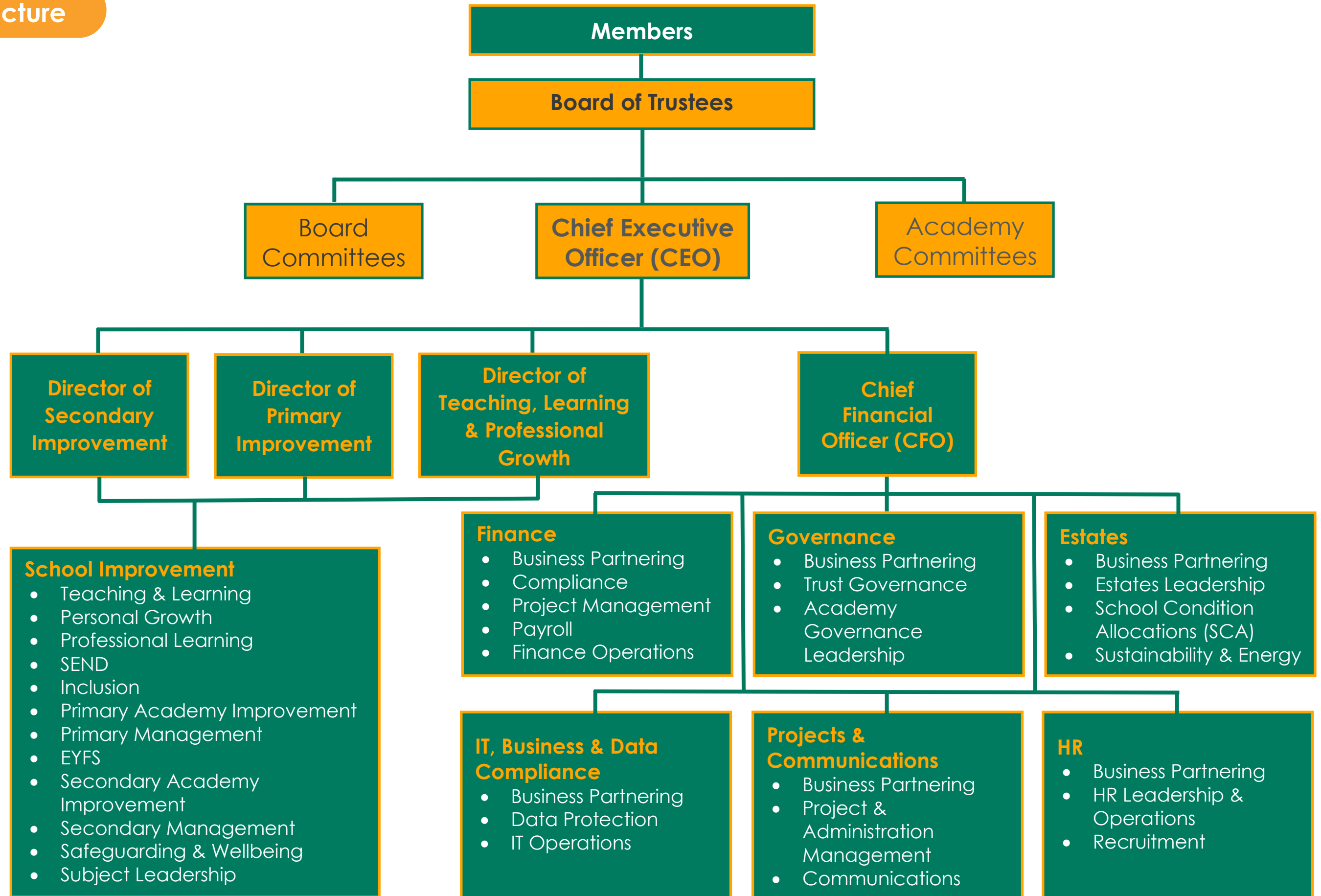
All schools receive a robust CPD programme focused on trauma informed schools, SEND, IT in the classroom and Teaching Walkthrus to improve practice, behaviour and outcomes. There is also a primary SENDCos network, bespoke EY conference, teach meets and networks with 'Early Excellence' professionals.

Whilst our schools have an individualised curriculum, they benefit from centrally planned curriculum materials which reduce workloads, especially in the foundation subjects.

Our Schools



 1. Ashton Park School	 6. Easton Royal Academy	 11. Liden Academy & Nursery	 16. Ogbourne CofE Primary School
 2. Ashton Vale School	 7. Fairfield High School	 12. Luckwell Primary School	 17. Redland Green School
 3. Burbage Primary School & Preschool	 8. Great Bedwyn CofE School	 13. May Park Primary School & Nursery	 18. St John's Marlborough & Sixth Form
 4. Cabot Primary School	 9. John O'Gaunt School	 14. Nythe Primary School & Nursery	 19. St Katharine's CofE Primary School
 5. Compass Point Primary School	 10. Lambourn CofE Primary School & Nursery	 15. Oare CofE Primary School	 20. The Wren School & Sixth Form



Excalibur Academies Trust, Granham Hill,
Marlborough, Wiltshire, SN8 4AX

01672 516156 | enquiries@excalibur.org.uk

Company number: 08146633

