



JOB DESCRIPTION



TITLE: Breakfast and After School Club Lead

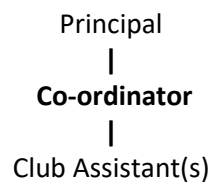
SCHOOL: The Ferrars Academy

RESPONSIBLE TO: Principal

GRADE: L2

PURPOSE OF POST: To co-ordinate the provision of out of school hours child care provision under the supervision of the Principal.

ORGANISATION CHART:



PRINCIPAL RESPONSIBILITIES:

1. Supervise staff and children in the Wrap Around Care provision, monitoring pupil attendance and staffing numbers, maintaining a healthy, safe and well-behaved environment at all times, taking action as necessary.
2. Ensure accurate registration and the completion of other forms as required.
3. Administer the lists of pupils to be collected from/delivered to classes each day, ensuring all personnel are appropriately informed.
4. Check the register is taken and tallies with the expected numbers, taking action as necessary.
5. Plan activities appropriate to the age and needs of the pupils taking into account different areas of learning. Ensure the room is set up to receive pupils into a purposeful environment.
6. Organise to ensure adequate refreshments are available.
7. Record any accidents/incidents properly, informing parents and others appropriately.
8. Ensure all Club equipment is cleared and locked away, leaving the premises clean, tidy and secure.

DIMENSIONS:

Supervisory Management: Up to 2 Club Assistants.

Physical Resources: Club play equipment.

Other: Up to 20 children.

CONTEXT: All support staff are part of a whole school team. They are required to support the values and ethos of the school and school priorities as defined in the School Improvement Plan. This will mean focussing on the needs of colleagues, parents and pupils and being flexible in a busy pressurised environment.

Because of the nature of this job, it will be necessary for the appropriate level of criminal record disclosure to be undertaken. Therefore, it is essential in making your application you disclose whether you have any pending charges, convictions, bind-overs or cautions and, if so, for which offences. This post will be exempt from the provisions of Section 4 (2) of the Rehabilitation of Offenders 1974 (Exemptions) (Amendments) Order 1986. Therefore, applicants are not entitled to withhold information about convictions which for other purposes are 'spent' under the provision of the Act, and, in the event of the employment being taken up, any failure to disclose such convictions will result in dismissal or disciplinary action by the Authority. The fact that a pending charge, conviction, bind-over or caution has been recorded against you will not necessarily debar you from consideration for this appointment.

Disclosures are handled in accordance with the DBS Code of Practice which can be accessed via www.disclosure.gov.uk

Physical Effort: The job is likely to involve some lifting of children and equipment on a regular basis. Training will be provided.

Working Environment: There could be a frequent requirement to deal with vomit and bodily fluids when children are unwell.

'The School is committed to safeguarding and promoting the welfare of children and expects all staff to share this commitment. Applicants must be willing to undergo child protection screening appropriate to the post, including checks with past employers and the Disclosure and Barring Service.'

'CVs will not be accepted for any posts based in schools.'

Person Specification

This acts as selection criteria and gives an outline of the types of person and the characteristics required to do the job.

Essential (E) :- without which candidate would be rejected

Desirable (D):- useful for choosing between two good candidates.

Please make sure, when completing your application form, you give <u>clear examples</u> of how you meet the <u>essential and desirable</u> criteria.				
Attributes	Essential	How Measured	Desirable	How Measured
Experience	Demonstrable experience of care of young children.	1,2	Experience of working in a school environment.	1,2
Skills/Abilities	Able to communicate effectively with parents and young children- able to empathise, counsel and comfort. Able to maintain accurate records. Able to organise own workload and act on own initiative. Able to add, subtract, multiply and divide. Able to converse with ease with members of the public and provide effective help or advice in accurate and fluent spoken English	1,2 1,2 1,2 1,2,5 1,2,5		
Competencies	Able to demonstrate appropriate motivation to work with young people Able to form appropriate relationships with young people Emotional resilience in working with challenging behaviours Appropriate attitudes to use of authority and maintaining discipline	1,2 1,2 1,2 1,2		
Equality Issues	Able to identify and act upon discrimination.	1,2		
Specialist Knowledge			Some knowledge of Health & Safety in a childcare setting. Some knowledge of behaviour management. Some knowledge of child protection issues.	1,2 1,2 1,2

Education and Training	First Aid certificate, or able to train and pass.	1,2,4		
	Level 3 Childcare Qualification	4		
Other Requirements	Willingness to undertake training.	1,2		
		1,2		

(1 = Application Form 2 = Interview 3 = Test 4 = Proof of Qualification 5 = Practical Exercise)

We will consider any reasonable adjustments under the terms of the Equality Act (2010) to enable an applicant with a disability (as defined under the Act) to meet the requirements of the post.

The Job-holder will ensure that Luton Borough Council's policies are reflected in all aspects of his/her work, in particular those relating to;

- (i) Equal Opportunities
- (ii) Health and Safety
- (iii) Data Protection Act (1984 & 1998)

'The School is committed to safeguarding and promoting the welfare of children and expects all staff to share this commitment. Applicants must be willing to undergo child protection screening appropriate to the post, including checks with past employers and the Disclosure and Barring Service.

'CVs will not be accepted for any posts based in schools.