

# Temporary Teacher of Social Science – Sociology (MAT Cover)

Applicant Pack

**SILVERDALE  
SIXTH FORM**



**SOUTH  
YORKSHIRE  
TEACHING  
HUB**

RECRUITING • TRAINING • DEVELOPING TEACHERS



**SHEFFIELD  
TEACHER  
TRAINING  
ALLIANCE**

**National  
Modern  
Languages**



SCHOOL CENTRED • INITIAL TEACHER TRAINING



**Eckington School**



**Hope Valley  
College**



**Silverdale  
School**



**Westfield School**



**Bradwell  
Junior School**



**HADY PRIMARY SCHOOL**



**Malin Bridge  
Primary School**



**Stocksbridge  
Junior School**



**Chorus**  
Education Trust

Outstanding Achievement for All

## Contents

The vacancy.....	3
Post advert .....	3
Role summary .....	3
Job description.....	4
Teaching .....	4
Whole school organisation, strategy and development .....	4
Health, safety and discipline .....	4
Management of staff and resources .....	4
Professional development .....	4
Communication.....	5
Working with colleagues and other relevant professionals.....	5
Support for the trust/school .....	5
Changes to these duties.....	5
Person Specification .....	6
Job Title: Teacher of Social Science (Sociology) .....	6
Qualifications .....	6
Experience.....	6
Professional knowledge and understanding .....	7
Professional skills .....	7
Silverdale School & Sixth Form .....	8
Chorus Education Trust .....	9

# The vacancy

## Post advert

<b>Deadline for applications:</b>	18 January 2026
<b>Interviews to be held:</b>	Week beginning 26 January 2026
<b>To start:</b>	April 2026

We are seeking to appoint an outstanding Teacher of Social Sciences (Sociology) who is passionate about their subject and committed to inspiring young people. This is an exciting opportunity for a highly motivated and enthusiastic practitioner to join our thriving Social Sciences Department, working collaboratively with a strong and supportive team to deliver high-quality teaching and learning that enables every student to succeed.

Silverdale School is a highly successful and oversubscribed school, recently recognised as one of the top ten northern schools in The Sunday Times Parent Power Guide 2026. Student behaviour is excellent, and staff benefit from a positive, collegiate culture built on teamwork, professional trust and high expectations. Silverdale is a fantastic place to teach, grow and develop, where staff are supported to be the very best they can be and where teaching is truly valued.

## Role summary

<b>Post title:</b>	Teacher of Social Science – Sociology (80% FTE)
<b>Group:</b>	M1 – UPS3
<b>Salary point range:</b>	M1 – M6 & UPS1 – UPS3
<b>Reporting to:</b>	Head of Department, Senior Leadership Team & Head of School
<b>Line manager:</b>	Head of Department
<b>Post holder will work with:</b>	All teaching and support staff within the school and across the trust.
<b>Holiday and sickness relief:</b>	By and for other teaching colleagues.
<b>Purpose of post:</b>	To implement and deliver an appropriately broad, balanced, relevant and differentiated curriculum for students and ensure delivery of high quality teaching and learning for which the teacher is accountable.
<b>Version revised:</b>	September 2022
<b>Contract:</b>	Temporary – Maternity Cover 80% FTE

## Job description

The post holder must at all times carry out their responsibilities within the spirit of the school and trust policies and within the framework of legislation relating to academies and education, with particular regard to the statutory responsibilities of the trust and the governing body of the school.

The job description should be read alongside the range of professional duties of teachers as set out the 'teachers' pay and conditions' document. The post-holder will be expected to undertake duties in line with the professional standards for qualified teachers and uphold the professional code of the Department for Education (DfE).

The specific duties and responsibilities include but are not limited to:

### Teaching

- Plan and teach lessons to the classes they are assigned to teach within the context of the school's plans, curriculum and schemes of work.
- Assess, monitor, record and report on the learning needs, progress and achievements of assigned pupils.
- Participate in arrangements for preparing pupils for external examinations.

### Whole school organisation, strategy and development

- Contribute to the development, implementation and evaluation of the school's policies, practices and procedures in such a way as to support the school's values and vision.
- Work with others on curriculum and/or pupil development to secure co-ordinated outcomes.
- Subject to paragraph 52.7 of the STPCD, supervise and so far as practicable teach any pupils where the person timetabled to take the class is not available to do so.

### Health, safety and discipline

- Promote the safety and well-being of pupils.
- Maintain good order and discipline among pupils.

### Management of staff and resources

- Direct and supervise support staff assigned to them and, where appropriate, other teachers.
- Contribute to the recruitment, selection, appointment and professional development of other teachers and support staff.
- Deploy resources delegated to them.

### Professional development

- Participate in arrangements for the appraisal and review of their own performance and, where appropriate, that of other teachers and support staff.
- Participate in arrangements for their own further training and professional development and, where appropriate, that of other teachers and support staff including induction.

## **Communication**

- Communicate with pupils, parents and carers.

## **Working with colleagues and other relevant professionals**

- Communicate with pupils, parents and carers.

## **Support for the trust/school**

- Be aware of and comply with policies and procedures relating to child protection, health, safety and security, confidentiality and data protection, reporting all concerns to an appropriate person.
- Work in a flexible way to respond to the needs of the trust and to fulfil other duties and responsibilities appropriate to the grade and role as and when required.
- Be aware of and support difference and ensure equal opportunities for all.
- Appreciate and support the role of other professionals.
- Attend and participate in relevant meetings as required.
- Contribute to the overall ethos/work/aims of the trust/schools.
- Participate in relevant training, other learning activities and performance management as required.
- Team responsibilities: all staff are considered part of the overall trust team and may be required to provide assistance to colleagues in other areas from time to time commensurate with the role, skillset and grade.

## **Changes to these duties**

The above duties are not exhaustive and the post holder may be required to undertake tasks, roles and responsibilities as may be reasonably assigned to them by the Headteacher/Principal.

The job description and allocation of particular responsibilities will be kept under review and may be amended via consultation with individuals, the governing body or board of trustees and/or senior leadership team as required. Trade union representation will be welcomed in any such discussions.

## Person Specification

Job Title: Teacher of Social Science (Sociology)

REQUIREMENTS	Essential	Desirable	Assessment method A = application I = interview R = reference
<b>Qualifications</b>			
A relevant degree together with a Sociology PGCE or equivalent teaching qualification (or currently an ITT/GTP trainee).	✓		A
Evidence of commitment to CPD to support areas of the job role.	✓		A / I / R
Detailed knowledge and understanding of the current issues in Sociology education.	✓		A / I / R
<b>Experience</b>			
Very good classroom practitioner OR Successful placement(s) teaching relevant subjects (for applicants currently in training) OR Successful record of teaching Sociology including very good exam results at one or more of KS4 and KS5 (for applicants who have already gained QTS).	✓		A / I / R
Contribution to the development of Sociology beyond the classroom.	✓		A / I / R
Ability to devise new resources for learning.	✓		A / I
Knowledge and understanding regarding safeguarding, child protection and Prevent.	✓		A / I / R
Use of student performance data to inform classroom teaching.	✓		A / I

Professional knowledge and understanding			
An enthusiasm for innovation and developing teaching and learning.	✓		A / I / R
An excellent understanding of engagement and how to motivate students.	✓		A / I
A sound understanding of modern pedagogy methods within the field of teaching Sociology.	✓		A / I
Detailed knowledge of current developments in education including the use of the Pupil Premium.		✓	A / I
Knowledge and experience of intervention strategies.		✓	A / I
Professional skills			
A high commitment to learning and achievement.	✓		A / I
A passion for education and making a difference.	✓		A / I
Excellent interpersonal, planning and organisational skills.	✓		A / I / R
The ability to collaborate with other staff.	✓		A / I / R
Willingness to contribute to the wider life of the school.	✓		A / I / R
Willingness to teach KS4 and KS5 Health and Social Care in the future.		✓	A / I
Commitment to safeguarding and promoting the safety and welfare of young people.	✓		A / I / R
Ability to inspire confidence in and establish excellent relationships with pupils, teachers and parents.	✓		A / I / R

## Silverdale School & Sixth Form

Silverdale School is an extremely popular and high achieving 11-18 comprehensive in the south west of Sheffield and is the founding school of Chorus Education Trust. Silverdale has 1,450 students on roll including 450 in Silverdale Sixth Form. In 2020 it was named the Sunday Times Top State Secondary School in the North of the Decade, in recognition of its sustained success.



Silverdale has an excellent record of student achievement at both key stage 4 and key stage 5. At our heart is one of the country's original teaching school hubs, the South Yorkshire Teaching Hub, which includes the Sheffield Teacher Training Alliance and National Modern Languages SCITT.

At Silverdale, we benefit from a new building with excellent facilities, which was expanded in 2023 to provide further state of the art teaching facilities and a dedicated Sixth Form centre.



In addition to trust-wide benefits for all staff, those at Silverdale School also have access to:

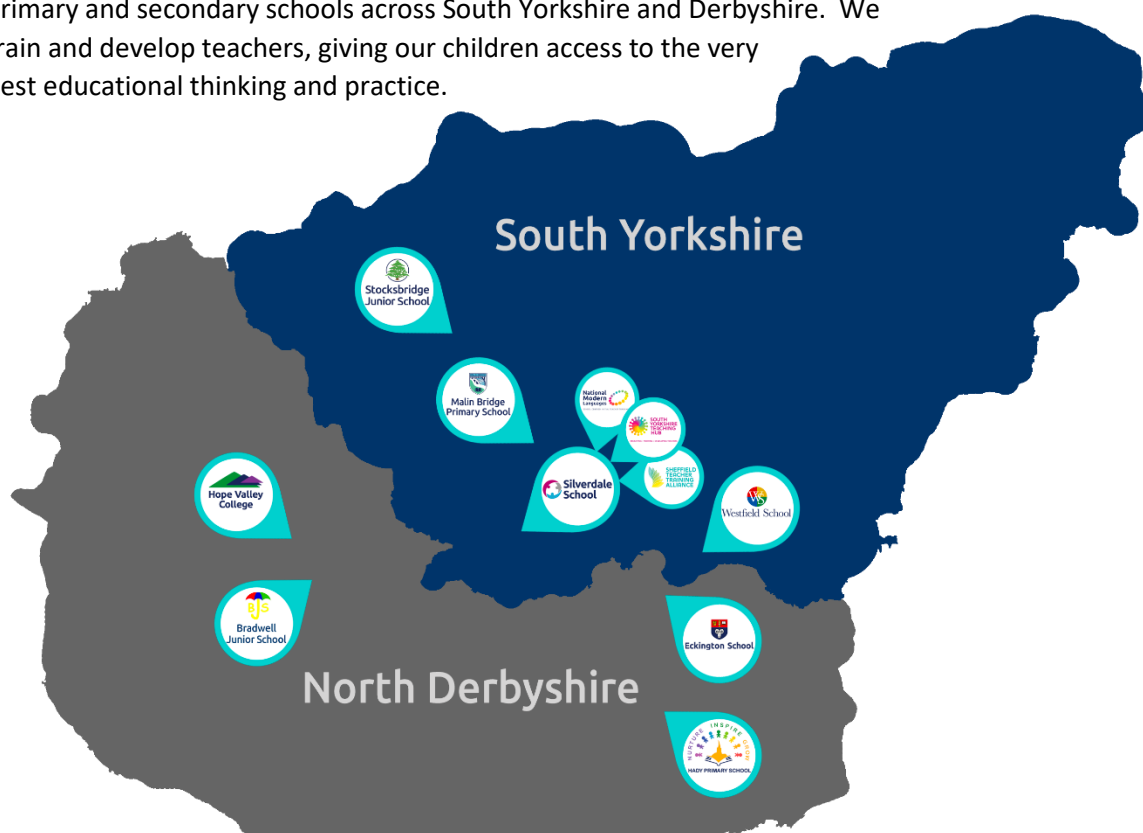
- Supportive and friendly staff and leadership team.
- Free staff parking.
- Opportunity to be part of the varied extracurricular offering, including Duke of Edinburgh's Award programme.

You can view the school website at: [www.silverdale.chorustrust.org](http://www.silverdale.chorustrust.org).



## Chorus Education Trust

Chorus Trust is a growing trust, committed to providing every child with the best education in both primary and secondary schools across South Yorkshire and Derbyshire. We train and develop teachers, giving our children access to the very best educational thinking and practice.



Our vision is 'Outstanding Achievement for All'. We want to create a culture of success in which our children and young people can succeed. We do this through the provision of safe and supportive schools, collaborating to ensure our children benefit from a more effective spend of public money.

As part of the Chorus Trust Team, all staff have access to:



An ethos of being a **force for good**; of being part of a team that enables 'outstanding achievement for all'.



A **collaborative environment** encouraging knowledge sharing and support.



Competitive **pension schemes**: Teacher's Pension Scheme (teaching staff) and local government pension scheme (support staff).



**Career progression** opportunities within a growing, local trust.



Leading edge **training and development** through the South Yorkshire Teaching Hub.



Discounted **health schemes** through Westfield Health and Westfield Rewards Schemes.



Term-time only contract postholders have the freedom of having **school holidays** off.



Support for **flexible working** arrangements.

You can read more about Chorus Trust at [www.chorustrust.org](http://www.chorustrust.org).