



The CAM Academy Trust
Casual Supply Teacher
Candidate information pack



WELCOME FROM THE CHIEF EXECUTIVE

Thank you for your interest in joining The CAM Academy Trust. It's a great time to join our team, as we enter an exciting phase of development and look to the future.

I feel highly privileged to lead our trust at this time. Our five year strategy – CAM30 – sets out our roadmap to becoming a truly exceptional family of schools.



We are a values-driven trust – our six principles underpin all that we do – and we're committed to excellence. As a teacher myself, and someone who has benefited hugely from an education, I absolutely believe in the transformational power of what we do in schools. This is particularly important for our most vulnerable young people, those who could become marginalised and not reach their potential due to their background or learning needs. It is up to us to make sure that doesn't happen.

Vibrant learning communities are built when pupils of all abilities and backgrounds thrive together, and a truly excellent education enables choice and agency for all children. This is at the heart of our comprehensive principle.

We want people on our team who are excited by the prospect of having a deep and lasting impact on the lives of young people. We want people who are honest, curious, intellectually rigorous and committed to the challenges and opportunities of innovation and collaboration. We also want people who are committed to contributing to the wider education system.

As Chief Executive, I am committed to raising standards for young people, in a sustainable way through a strong MAT operating model and an insistence on excellence whilst understanding that schools need to retain their unique identity so they can be at the heart of their communities. I also know that investing in all our people is critical to success. It is our leaders, teachers and school staff that make the difference for children every day.

Join our team and we will work together to deliver 'excellence for all', enabling all pupils and staff to thrive and be successful. If this excites you; we want to hear from you!

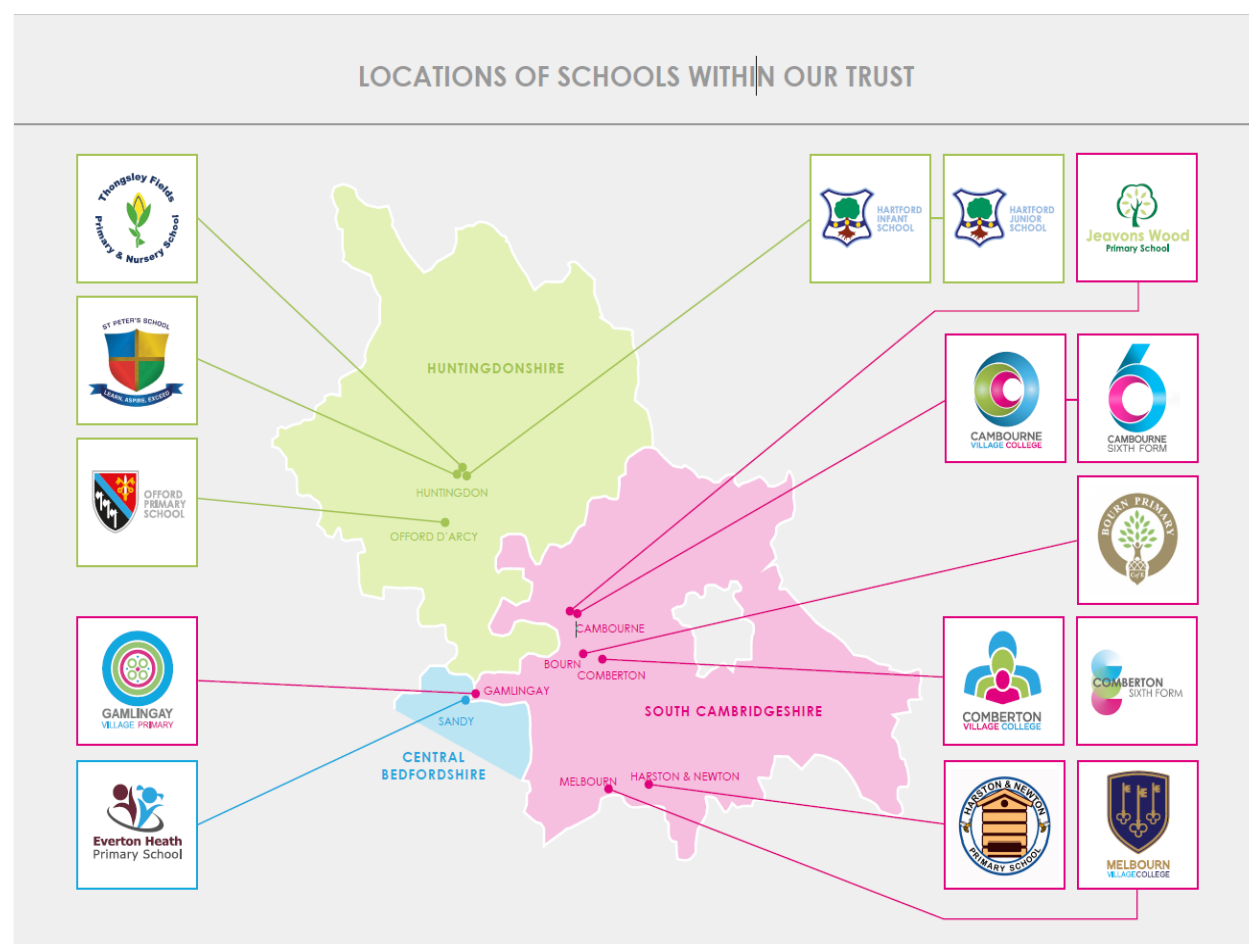
Claire Heald

ABOUT US

The CAM Academy Trust was established in 2011 and currently comprises twelve primary schools and five secondary schools, four of which include sixth forms. In January 2026, ACES Academies Trust - a Huntingdon-based multi-academy trust - merged with CAM, adding five additional schools to our family.

Our primary schools are Cromwell Academy, Everton Heath Primary School (just inside Bedfordshire), Gamlingay Village Primary, Godmanchester Bridge Academy, Godmanchester Community Academy, Jeavons Wood Primary School, Offord Primary School, Hartford Infant and Pre-School, Hartford Junior School, Harston and Newton Primary School, Spaldwick Primary School and Thongsley Fields Primary and Nursery School. Bourn Primary Academy joined as the first Associate Member in 2021.

Our secondary schools are: Comberton Village College (and Sixth Form), Cambourne Village College (and Sixth Form), Hinchbrook School, Melbourn Village College and St Peter's School (and Sixth Form).



ABOUT US

Continued

Teacher training (CTSN)

The CAM Academy Trust supports the training of new teachers to become qualified members of the teaching profession. We do this through our SCITT (CTSN).

As a school-based provider of initial teacher training, CTSN SCITT is very much grounded in the life of its local schools and its tutors are experienced practising teachers drawn from, not only CAM Academy Trust schools, but also a wide network of schools across the region.

Our SCITT has a strong regional reputation.

Maths Hub

The CAM Academy Trust is proud to be the base for the [Cambridge Maths Hub](#) which is promoting excellence in maths teaching across Cambridgeshire, as well as Peterborough, West Suffolk, King's Lynn and West Norfolk.

The Hub supports teachers to improve educational standards for students in our region from the youngest child in Early Years to Post-16.

The Cambridge Maths Hub offers free, high-quality professional development to maths teachers across the Hub area.

The Cabins

Our Cabin provisions are attached to four of our schools. The Cabins provide autistic students with an opportunity to be educated in mainstream settings.

We set high expectations for students but provide expert support from highly skilled and caring staff.

All our cabins strive to ensure that every pupil attains the highest possible academic achievement and offer high levels of pastoral support.



THE VACANCY

Salary: MPS - paid on an hourly or daily rate

Contract: Casual contract – as and when required

Start date: As soon as possible

Place of work: Comberton Village College

We are a highly successful, community mixed comprehensive school with Teaching School status in a pleasant rural setting only 5 miles from the centre of Cambridge. We currently have around 2000 11-18 pupils on roll including our sixth form centre that opened in September 2011.

Our pupils are well motivated, staff morale is excellent and examination results at KS4 and KS5 were outstanding: both attainment and progress measures regularly put the school in the top 5% of all state comprehensive schools. The school has consistently been rated by Ofsted as outstanding over very many years – our most recent Ofsted (November 2024) achieved 'outstanding' in all categories.

We are seeking to appoint an outstanding casual supply Teacher to join our successful and supportive team of teachers. The successful candidate will need to be an enthusiastic, inspiring and motivating teacher who can demonstrate excellent knowledge and will ensure students have high aspirations and achieve their best. The post is suitable for ECTs or more experienced teachers.

Day-to-day duties for a Cover Teacher include:

- Supervising pupils, ensuring they are engaged in the classwork.
- Encouraging pupils to interact.
- Helping pupils to become more independent in their learning.
- Establishing trust with pupils, interacting with them according to individual needs.
- Assisting pupils with tasks as needed.
- Creating a safe, positive, supportive classroom environment.
- Promoting good behaviour, dealing promptly with conflict and incidents in line with established policies, encouraging pupils to take responsibility for their behaviour.
- Collecting completed work and returning it to the teacher.
- Assisting with the supervision of pupils before and after school and at break times.
- Providing feedback to teachers on pupil's achievement, progress, and if any problems.
- Upholding policies and procedures related to child protection, health and confidentiality, reporting all concerns to the appropriate person.

For further details on our school please visit our website www.combertonvc.org.

HOW TO APPLY

To apply for this position, please submit your completed application form with supporting statement to Danyah Aboujieb, Cover Manager on [MyNewTerm](#).

Your supporting statement should demonstrate how your career to date has prepared you for this post and be no longer than two sides of A4.

Applications will only be accepted from applicants completing the application form in full. Please note that we do not accept CVs.

Interviews will be offered to those applicants who best demonstrate how their skills, abilities and experience meet the person specification, taking into consideration the job description.

We reserve the right to interview and appoint within the application window. With this in mind, we encourage you to apply as soon as possible.

If you have any questions about this role, please contact Danyah Aboujieb, Cover Manager on daboujieb@combertonvc.org.

Closing date: 09.00 on Wednesday 28th January 2026

Thank you for your interest in The CAM Academy Trust.



JOB DESCRIPTION

Salary:

The post holder will be paid on the appropriate point of the main scale on a daily or hourly rate depending on the hours of work

Line of responsibility:

The teacher is directly responsible to the Cover Manager on curriculum matters and the Head of Year for pastoral issues.

Strategic purpose:

The basic duties of a teacher are outlined in the latest School Teachers' Pay and Conditions Document. The post holder shall maintain a good understanding of whole College curriculum, assessment and pastoral policies.

In addition to the responsibilities described in the job description, to carry out any other duties of a similar nature at the reasonable request of the central education team.

The job description will be subject to regular review and any changes will be made in consultation with the post holders. The aim will always be to reach agreement on any changes, but if agreement is not possible, the trust reserves the right to make the changes following consultation.



Six core principles

At the heart of our work lie the six core principles of The CAM Academy Trust.

These drive everything that we do.



The CAM Academy Trust is committed to safeguarding and promoting the welfare of children and young people and expects all staff and volunteers to share this commitment. Successful candidates will be subject to an enhanced DBS check, barred list check and a medical questionnaire.

JOB DESCRIPTION continued

Core responsibilities	<ul style="list-style-type: none"> • Supervising pupils, ensuring they are engaged in the classwork. • Encouraging pupils to interact. • Helping pupils to become more independent in their learning. • Establishing trust with pupils, interacting with them according to individual needs. • Assisting pupils with tasks as needed. • Creating a safe, positive, supportive classroom environment. • Promoting good behaviour, dealing promptly with conflict and incidents in line with established policies, encouraging pupils to take responsibility for their behaviour. • Collecting completed work and returning it to the teacher. • Assisting with the supervision of pupils before and after school and at break times. • Providing feedback to teachers on pupil's achievement, progress, and if any problems. <p>Upholding policies and procedures related to child protection, health and confidentiality, reporting all concerns to the appropriate person.</p>
Personal development	<ul style="list-style-type: none"> • Maintain excellent subject expertise and awareness of the latest, evidence informed practice • Engage in regular professional learning and reading. • Engage positively in the Trust's arrangement for performance management and professional growth.
Safeguarding	<ul style="list-style-type: none"> • Adhere to Trust safeguarding policy and procedure at all times. • Promote strong cultures of safeguarding across the Trust and schools.
Advocacy and influence	<ul style="list-style-type: none"> • Be an advocate for the Trust externally and across our schools. • Be outwards facing and see opportunities for positive influence and external partnership and networking.
Teaching	<ul style="list-style-type: none"> • Plan work in accordance with the curriculum • Set work when required for absent students. • Maintain good behaviour and conduct by following the student behaviour policies and procedures. • Set appropriate and challenging work for all students, adapting teaching to meet pupils' needs including those with SEND. • Ensure effective setting of homework and feedback to students. • Keep appropriate records of students' work. • Undertake assessment and school reports in line with school procedures • Attend parents' evenings as required and keep parents informed about their child's performance and future targets.

The CAM Academy Trust is committed to safeguarding and promoting the welfare of all children and young people. We expect all staff to actively share this commitment. All adults working in our Trust in whatever capacity will be part of a thorough safer recruitment process. All appointments will be subject pre-employment checks including the taking of satisfactory references and enhanced criminal record clearance (via the Disclosure and Barring Service) in line with the need to create and maintain a safe culture.

PERSON SPECIFICATION

CRITERIA	ESSENTIAL	DESIRABLE
Qualifications and Experience		
<ul style="list-style-type: none"> Qualified teacher status. 	X	
<ul style="list-style-type: none"> A continued commitment to own professional development. 	X	
<ul style="list-style-type: none"> Teaching experience within the designated age range. 	X	
<ul style="list-style-type: none"> Of child-safeguarding issues and successful use of measures that promote and ensure the safe-guarding of children. 	X	
<ul style="list-style-type: none"> Excellent standard of teaching within subject area. 	X	
<ul style="list-style-type: none"> Further relevant professional studies. 		X
<ul style="list-style-type: none"> Experience of more than one school/academy. 		X
<ul style="list-style-type: none"> Experience of more than one key stage. 		X
<ul style="list-style-type: none"> Management experience and/or leading extra-curricular projects. 		X
<ul style="list-style-type: none"> Good knowledge of current legislation, guidance and policy in the subject area. 		X
Knowledge and Interpersonal Skills		
<ul style="list-style-type: none"> Establishing a safe and stimulating environment for students, rooted in mutual respect. 	X	
<ul style="list-style-type: none"> Setting goals that stretch and challenge students of all backgrounds, abilities and dispositions. 	X	
<ul style="list-style-type: none"> Demonstrating consistently, the positive attitudes, values and behaviour which are expected of students. 	X	
<ul style="list-style-type: none"> Being accountable for students' attainment, progress and outcomes. 	X	
<ul style="list-style-type: none"> Being aware of students' capabilities and their prior knowledge, and plan teaching to build on these. 	X	
<ul style="list-style-type: none"> Guiding students to reflect on the progress they have made and their emerging needs. 	X	
<ul style="list-style-type: none"> Encouraging students to take a responsible and conscientious attitude to their own work and study. 	X	
<ul style="list-style-type: none"> Demonstrating knowledge and understanding of how students learn and how this impacts on teaching. 		X

<ul style="list-style-type: none"> Having a secure knowledge of the relevant subject(s) and curriculum areas, fostering and maintaining students' interest in the subject, and addressing misunderstandings. 	X	
<ul style="list-style-type: none"> Demonstrating a critical understanding of developments in the subject and curriculum areas and promoting the value of scholarship. 	X	
<ul style="list-style-type: none"> Demonstrating an understanding of and taking responsibility for promoting high standards of specified subject, articulacy and the correct use of standard English. 		X
<ul style="list-style-type: none"> Imparting knowledge and developing understanding through effective use of lesson time. 	X	
<ul style="list-style-type: none"> Promoting a love of learning and student's intellectual curiosity. 	X	
<ul style="list-style-type: none"> Setting homework and planning other out-of-class activities to consolidate and extend the knowledge and understanding students have acquired. 	X	
<ul style="list-style-type: none"> Reflecting systematically on the effectiveness of lessons and approaches to teaching. 	X	
<ul style="list-style-type: none"> Contributing to the design and provision of an engaging curriculum within the relevant subject area(s). 		X
<ul style="list-style-type: none"> Knowing when and how to differentiate appropriately, using approaches which enable students to be taught effectively. 	X	
<ul style="list-style-type: none"> Having a clear understanding of the needs of all students, including those with special educational needs; those of high ability; those with English as an additional language; those with disabilities; and being able to use and evaluate distinctive teaching approaches to engage and support them. 	X	
<ul style="list-style-type: none"> Having a secure understanding of how a range of factors can inhibit students' ability to learn, and how best to overcome these. 	X	
<ul style="list-style-type: none"> Demonstrating an awareness of the physical, social and intellectual development of students, and knowing how to adapt teaching to support students' education at different stages of development. 		X
<ul style="list-style-type: none"> Knowing and understanding how to assess the subject and curriculum areas, including statutory assessment requirements. 	X	
<ul style="list-style-type: none"> Making use of formative and summative assessment to secure students' progress. 	X	
<ul style="list-style-type: none"> Using relevant data to monitor progress, set targets, and plan subsequent lessons. 	X	
<ul style="list-style-type: none"> Giving students regular feedback, both orally and through accurate marking, and encouraging students to act on the feedback. 		

BENEFITS

We offer the following benefits, designed to promote your wellbeing and make your time with The CAM Academy Trust satisfying and rewarding.

Core benefits

- Paid leave – enhanced sick pay, maternity pay, and adoption leave pay (linked to service) and paid leave for unforeseen personal situations.
- Pension – a generous pension scheme.
- Death in service payment – lump sum payment and an ongoing pension for your partner & children (subject to conditions & membership of our pension scheme).

Health and wellbeing

- Employee counselling and support – free, independent 24/7 help and advice for work related issues, as well as problems affecting your home life.
- Environment – good working environment with excellent facilities.

Professional development

- Professional development – full and part-funded training courses and a wide range of learning opportunities available to all staff.

Employee discounts

- Car parking – free and on-site.
- Hot drinks – tea & coffee making facilities provided.
- Cycle-to-work scheme – save £££ on a new bike and accessories.

Work-life balance

- Flexible working – all staff can make a request to work flexibly.



The CAM Academy Trust

Head Office | Cambourne Village College

Sheepfold Lane | Cambourne | CB23 6FR

info@catrust.co.uk

www.catrust.co.uk