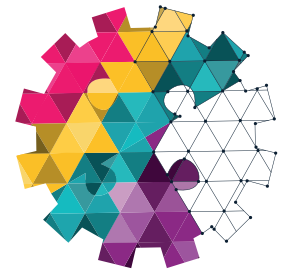


YEAR 10 & SIXTH FORM **PROSPECTUS**



**Crewe Engineering
& Design UTC**



**WE ARE
INDUSTRY READY**



PRINCIPAL'S WELCOME

Crewe UTC provides students with a unique opportunity.

We deliver a specialist engineering and design curriculum for students starting in Year 10 or Year 12. Our unrivalled real-world engineering and design experiences, delivered in state of the art facilities, are combined with excellence in English, Mathematics and Science.

Our industry partners support us to ensure the student experience is at the cutting edge of the modern engineering and design sector, giving every young person the opportunity to progress into highly sought-after apprenticeships, further education and skilled positions in the workforce.

Our dedicated team of teachers and pastoral staff support all students to make excellent progress and ensure they graduate Industry Ready.

Mr W Chitty
Principal

WHY ENGINEERING & WHY CREWE UTC?

Crewe has built a reputation as one of the world's greatest railway workshops and today is home to leading engineering and design firms such as Bentley Motors, Whitby Morrison, Alstom, Network Rail and many more. Engineering and design is at the heart of everything we do and we're proud to work with industry partners to help our students develop the technical skills required for the workplace.

DID YOU KNOW?

- Average engineering graduate salary is £33,725
- There's a shortage of Civil, Mechanical, Electrical and Design & Production Engineers, with vacancies at an all-time high

WE DO THINGS DIFFERENTLY

We only teach Year 10, Year 11 and Sixth Form.

We teach our specialist engineering and design curriculum, not the Ebacc.

We're small enough to offer a highly personalised academic and pastoral experience where every student is known as an individual.



WE ARE INDUSTRY READY

Our integrated curriculum ensures the principles of excellent engineering and design underpin all learning.

Employer set projects and industry placements contextualise and legitimise each students' learning.

Our professional expectations and competencies mirror that of our most successful industry partners.



OUR FACILITIES ARE TRULY UNIQUE

Our state-of-the-art engineering workshop and machinery are the envy of most schools, and even some universities. This means that from Year 10, our students are exposed to a real-world industry environment and have the opportunity to use:

- **CNC Milling Machines**
- **Industry laser cutters**
- **3D Printers**
- **Augmented and virtual reality head sets**
- **State of the art CAD software**

MODERN, PURPOSE-BUILT CAMPUS

Crewe UTC is a purpose-built site, that opened in 2016 specifically for the teaching of Engineering and Design.

Our campus provides our students and staff with a bright, airy, modern working environment with social areas, canteen and study zones.



INDUSTRY PARTNERS

Working closely with industry partners is central to our proposition and teaching. They support our students with:

- **employer talks and masterclasses**
- **real-world industry projects**
- **work experience placements**

OUR INDUSTRY PARTNERS INCLUDE: Balfour Beatty



Manchester Metropolitan University

SIEMENS M
ALSTOM MOTT MACDONALD



BENTLEY



ROYAL AIR FORCE



YEAR 10 & YEAR 11

PASTORAL SUPPORT & TRANSITION FROM YEAR 9

We know it's a big decision to move schools at the end of Year 9. That's why we prioritise pastoral and SEND support to students and families to help the transition into Crewe UTC.

We're small enough to quickly develop close relationships with all students and our induction programme helps students settle with us as smoothly and quickly as possible.

Remember, everyone starting in Year 10 is new to Crewe UTC.

WEEKLY EMPLOYER ASSEMBLIES

Each and every week of the year one of our 40 partners delivers an industry talk. These include:

- Bentley
- Balfour Beatty
- Alstom
- Whitby Morrison
- Network Rail
- RAF



THE COLLEGE DAY

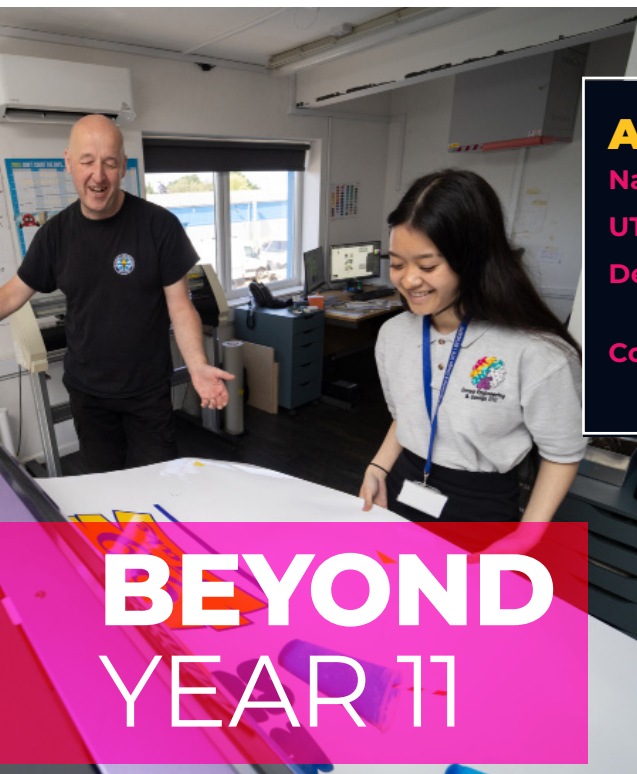
Arrival	7.30 - 8.25 Free Breakfast Available
Period 1	8.30 - 9.30
Assembly/Registration	9.30 - 10.00
Period 2	10.00 - 11.00
Break	11.00 - 11.20
Period 3	11.20 - 12.20
Period 4	12.20 - 13.20
Lunch	13.20 - 14.00
Period 5	14.00 - 15.00
Period 6 Enrichment Intervention	15.00 - 16.00 (Monday-Thursday)

YEAR 10 & YEAR 11 CURRICULUM

WE ARE DIFFERENT

Year 10 and Year 11 students follow our specialised curriculum, which is split into three focus areas. Students also have weekly PE and PSHE sessions:

GCSE Subjects	Engineering and Design	Option Subjects (Select One)
English Language	Engineering (OCR Cambridge National)	Art, Design & Photography GCSE
English Literature		Computer Aided Design (CAD) City and Guilds Level 1 & 2
Mathematics	Design & Technology (GCSE)	Engineering Programmable Systems Cambridge National
Combined Science (Double Award)		
5 GCSEs	2 GCSEs or equivalent	1 GCSE or equivalent



ALUMNI

Name: Samuel Johnson
UTC Course: T-Level Engineering
Destination: Liverpool John Moores University
Course: BSc Product Design Engineering



APPRENTICESHIPS OR SIXTH FORM

Our engineering and design students typically stay with us into Sixth Form, pursuing one of two pathways. Both our T Level in Engineering and the BTEC Double Award in Engineering provide students with high quality opportunities in further education and apprenticeships.

BEYOND YEAR 11

SIXTH FORM ENGINEERING AND DESIGN CURRICULUM

We welcome students from schools across the region into our Sixth Form. The flexible pathways below enable access to our engineering and design courses via two different entry points at Year 12.

Pathway	T Level Pathway 2 Years	BTEC Pathway 2 Years
Entry Grades	5 GCSEs at Grade 4 or above (including Maths & English)	5 GCSEs at Grade 3 or above (including English & Maths)
Qualifications	<p>T-Level Engineering*</p> <p>45 day industry placement</p> <p>Engineering, manufacturing, processing & control</p> <p>*equivalent to 3 A Levels</p> <p>A Level Mathematics (Optional)</p>	<p>BTEC Engineering Level 3*</p> <p>Level 2 or 3 Computer Aided Design</p> <p>Can include:</p> <p>GCSE English Resit (if grade less than 4)</p> <p>GCSE Maths Resit (if grade less than 4)</p> <p>*equivalent to 2 A Levels</p>

ALUMNI

Name: Angel Chavez

UTC Course: T-Level Engineering

Destination: University of Liverpool

Course: BEng Aerospace Engineering

WE ARE
INDUSTRY
READY



T LEVEL ENGINEERING

This **prestigious qualification** is the equivalent to three A Levels, and includes an in-depth industry placement.

OUR INDUSTRY

PARTNERS INCLUDE: Balfour Beatty



SIEMENS M

ALSTOM

M
MOTT
MACDONALD



NetworkRail



BENTLEY

ROYAL
AIR FORCE



SIXTH FORM CURRICULUM

Our industry partners recognise that the T Level is giving them the opportunity to bring highly skilled college leavers into their business as soon as they leave the UTC. The 45 day placement gives industry partners and students the opportunity to 'try before you buy' and each year more of our students are offered high quality apprenticeships with these businesses.

UCAS GUIDANCE

Every student will receive advice and guidance to support applications for apprenticeships and university courses.

ALUMNI

Name: Edward Harry
UTC Course: T-Level Engineering
Destination: Alstom Apprenticeship

WE ARE
INDUSTRY
READY



STUDENT DESTINATIONS

We are immensely proud of the onward steps our students have taken after leaving Crewe UTC. These include:

Further & Higher Education	Apprenticeships	Employment
<p>Liverpool Hope University Liverpool John Moores Manchester Metropolitan University Nottingham Trent University Oxford Brooke's University Sheffield Hallam Solent University Staffordshire University The Open University University of Chester University of Derby</p>	<p>Alstom Arriva Traincare Audi Bentley Cobalt Systems CoorsTek Engineering Gateway Electronics Ltd Gloversure Software James Walker Mastermovers Network Rail Pentagon Engineering Rolls-Royce SB Interior Design Siemens Uni Part Rail Volker Rail</p>	<p>Audi BAE Systems Bentley BMW Jaguar Kia Motors Liverpool University NHS MSV Motor Sports Omua Protea Royal Airforce Royal Navy</p>



HOW TO APPLY

We are now accepting admissions for Year 10 and Sixth Form.

You can apply online at www.utccrewe.co.uk

01270 218 150
admissions@creweutc.org.uk

Check our website for information about the next open event.

West Street, Crewe CW1 2PZ
 (access via Meredith Street)



Crewe Engineering & Design UTC



Crewe Engineering & Design UTC is part of The Learning Partnership; a multi-academy trust with schools across East Cheshire and North Staffordshire.