

Founded 1642



# New Hall School

The Best Start in Life



## Appointment of Early Years Educator

Application closing date: midday, Friday 3 July 2026

Start date: as soon as possible

## Welcome from Mrs Jeffrey, Principal



“Thank you for your interest in this opportunity at New Hall School. I joined the New Hall School community 24 years ago and, now that I am both the longest serving Head of a school in HMC and the longest serving Head in New Hall’s history, I am often asked what has kept me here. It started with that first visit, in 2001, which blew me away. I remember meeting confident, characterful, good-humoured students, who made a lasting impression on me with their kindness and their evident pride in being part of the New Hall community. They spoke with passion about the work of the New Hall Voluntary Service (NHVS) as being central to School life. Their generosity of spirit and commitment to the care of those in need turned out to be a hallmark of a New Hall education. This is a place with a remarkable sense of community. At first, you will be attracted by the stunning

heritage site, but, above all, it is the people who keep you here. I would not want to move anywhere else. As a parent, I could not have asked for a better education than New Hall gave my four children. The staff team here work with remarkable commitment and care to ensure that our children have the ‘best start in life’. This is the school that many of us, staff and parents, wish that we had attended. I am looking forward to the next 20-year development plan!

New Hall, from its foundation, has been pioneering and innovative. The School is the UK’s oldest Catholic school that has always taken girls; a strong commitment to promote equality, and to address disadvantages in society for girls and women, still prevails. Our outreach and community work led us to be the first independent school to sponsor a state primary school academy. We were the first Catholic diamond model school and the first diamond model school to be created from a former girls’ senior school, with senior boys joining from 2006. The School has invested in exceptional outdoor learning, using its 180-acre campuses.

The School is large and diverse: in age, from 1-19; in size, with 1,400 students and over 300 staff; in culture, with students from over 25 countries; in religion, as a Catholic school, welcoming all who support our ethos; in structure, offering the full range of flexible boarding options and a mix of co-education and single-sex teaching; and in educational range, with a broad curriculum and an exceptional co-curricular programme. Every day is full of opportunities to learn and grow, for staff as well as for students. It is impossible to be bored here - no two days are the same!

This is an exciting opportunity to be part of one of the UK’s most successful schools, with an ambitious plan for further development. Where many independent schools are retracting and reducing investment, New Hall is bucking the trend and continuing to grow and to strengthen our provision. We are investing in our Sixth Form Centre, expanding our curriculum, growing our Sport provision (most recently, with the addition of riding, football and basketball) and enhancing our co-curriculum. We are open to opportunities to expand the work of our Trust, both in the UK and internationally, through our links with sister schools and Religious Communities. In particular, we are developing a link with the École Christ Ressuscité, Masaka, Rwanda, and with Heilig Graf Secundair, Turnhout, Belgium, which share the ethos of the Canonesses of the Holy Sepulchre. New Hall also works closely with the other Catholic independent schools in Brentwood Diocese.

I hope that you find the information contained in this pack, and on our website, helpful.”



Mrs Jeffrey and Mr Fardell receive their long service awards, having given 68 years of service between them, to Catholic education. The awards were presented by Bishop Alan Williams SM at Brentwood Cathedral. Pictured here with the resident Canonesses at New Hall.

## Mission & Ethos Statement

New Hall, a Catholic boarding and day school, provides **the best start in life**, enabling students to meet confidently the challenges of the wider world.

Here **academic excellence** is achieved in surroundings where relationships are based on **care, trust and respect**.

We **welcome** students from many traditions, building a Christian **community**

## Our Most Valuable Resource – Our Staff Team

New Hall benefits from a stable and committed staff body, with retention and length of service significantly exceeding sector averages for UK independent boarding schools. Across the independent sector, annual staff turnover is typically in the region of 16-18%, and average tenure is around three to four years. By contrast, New Hall reported an annual turnover of 3% in the last 12 months, and an average staff tenure of five years.

At New Hall, over 17% of employees have more than 10 years' service, reflecting the strength of our collegiate culture, clear sense of mission, and commitment to professional development. Currently, two staff (one teacher, one support staff) have served for over 40 years, and 24 staff have served for over 20 years.

Staff are supported and encouraged in their career development, including through generous funding for courses, and flexible working/sabbaticals for study and training. In 2024-25, 30% of staff progressed, internally or externally, into new roles, promotional opportunities, or additional responsibilities. Since 2020, New Hall has trained 11 staff as teachers, through the school-based PCGE and ECT courses. The School welcomes apprentices and graduate entry applicants for a range of roles, to have a diverse workforce, combining experienced staff and new talent.



*Staff celebrating working at New Hall for over 10 years in 2024*

Scan the QR code to listen to staff views on working at New Hall



# Role Profile – Early Years Educator

New Hall School is seeking to appoint an Early Years Educator for the Nursery. This role is central to the School's commitment to providing a nurturing, stimulating, and well-resourced environment that supports young children during their crucial early years of development.

The Early Years Educator role serves as a key position within the Nursery team, working closely with colleagues to deliver high-quality early years education in line with the Early Years Foundation Stage (EYFS), the School's Mission and Ethos, and all relevant safeguarding and welfare requirements. The successful candidate will play a vital role in ensuring that every child feels safe, valued, and supported to achieve their full potential.

## Key responsibilities

- to act as a Key Person, taking responsibility for the care, learning, and development of a group of children
- to take ownership of planning and delivery of age-appropriate learning activities
- to observe, assess, and record children's progress, maintaining accurate Learning Journeys and online assessments
- to contribute to written reports and engage positively with parents through meetings and formal communications
- to support the Nursery Manager with behaviour management and pastoral care
- to promote children's welfare, safeguarding, and health and safety at all times in line with School policies
- to maintain consistent care routines, including sleep, personal care, and first aid as appropriate
- to prepare learning resources and contribute to daily planning
- to help maintain a clean, safe, and well-organised Nursery environment
- to accompany and supervise children on outings and educational visits
- to promote strong home-school links and high-quality Early Years practice

## Person Specification (essential in normal font; desirable in *italics*)

### 1. Catholic Ethos

- 1.1 to have a clear understanding of and a commitment to Catholic education
- 1.2 to care about the School's charitable work and public benefit and to help nurture the spirit of service to others
- 1.3 *to be a practising Catholic, able to give active and effective witness to the faith*
- 1.4 *to be able to give leadership in the spiritual and prayer life of the School, and in moral and faith development*

### 2. Education & Training

- 2.1 to be educated to GCSE level
- 2.2 to have an NNEB or NVQ Level 3 qualification in Childcare (or equivalent)
- 2.3 to have formal training in the care of babies, and children under the age of 2
- 2.4 to have a valid Paediatric First Aid Certificate
- 2.5 to have a sound understanding of the Early Years Foundation Stage (EYFS)

### 3. Experience

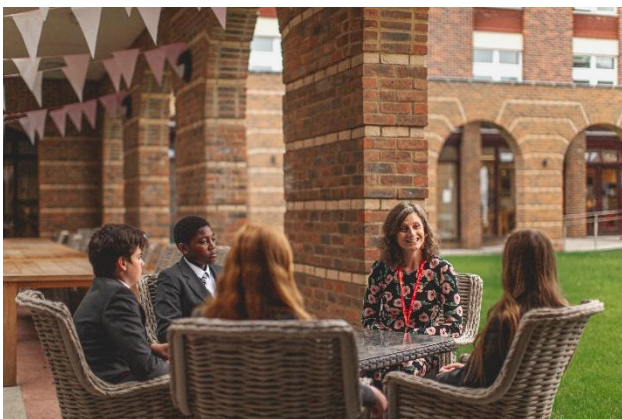
- 3.1 to have previous experience of working in a School or similar educational environment
- 3.2 to have experience of working in an Early Years setting
- 3.3 *to have experience working with children with SEND and providing 1:1 support*
- 3.4 *to have experience of working in a boarding school environment*
- 3.5 *to have experience of working within a pastoral or student support role*
- 3.6 *to have experience of liaising with parents*
- 3.7 *to have knowledge of pastoral systems within secondary education*

### 4. Skills and Aptitudes

- 4.1 to have excellent communication, organisational, and interpersonal skills
- 4.2 to demonstrate a high level of accuracy, discretion, and attention to detail
- 4.3 to act as a Key Person, taking responsibility for the care, learning, and development of a group of children
- 4.4 to take ownership of planning and delivery of age-appropriate learning activities
- 4.5 to observe, assess, and record children's progress, maintaining accurate Learning Journeys and online assessments
- 4.6 to maintain consistent care routines, including sleep, personal care, and first aid as appropriate
- 4.7 to prepare learning resources and contribute to daily planning
- 4.8 to help maintain a clean, safe, and well-organised Nursery environment
- 4.9 to accompany and supervise children on outings and educational visits
- 4.10 to have excellent communication and organisational skills
- 4.11 to have strong IT skills, including experience of online assessment tools such as Tapestry
- 4.12 to be able to work effectively as part of a team and use initiative when required
- 4.13 *to have familiarity with school management information systems (e.g. iSAMS, MyConcern)*

### 5. Personal Attributes

- 5.1 to demonstrate the ability to build positive and professional relationships with students, parents and staff
- 5.2 to have a clear understanding of the importance of promoting and safeguarding the welfare of children
- 5.3 to show commitment to supporting student wellbeing and pastoral care
- 5.4 to demonstrate a calm, approachable, and empathetic manner when working with young people
- 5.5 to be able to manage a varied workload, prioritise effectively, and work under pressure
- 5.6 to demonstrate a positive, proactive, and flexible attitude
- 5.7 *to demonstrate an understanding of the social and emotional challenges faced by young people*



# Culture, Values and Professional Conduct

## What We Expect from All Staff

### **1 Catholic Life**

- 1.1 to support and to contribute to the Catholic ethos of the School, as outlined in the Mission & Ethos Statement and Aims of the School
- 1.2 to be aware of and contribute to the School Development Plan and to promote the strategic aims of the School

### **2 Staff**

- 2.1 to foster good working relationships based on care, trust and respect
- 2.2 to work as an effective member of the wider team, demonstrating flexibility to assist with general workload at times of peak volume

### **3 Safeguarding**

- 3.1 all staff are responsible for promoting and safeguarding the welfare of students at New Hall School by ensuring compliance with the School's Safeguarding & Child Protection Policy and Procedures at all times. It is a requirement of all staff to report any actual or potential risks to the safety or welfare of students to the Designated Safeguarding Lead
- 3.2 to promote and safeguard the welfare of pupils by ensuring compliance with the Safeguarding & Child Protection Policy at all times
- 3.3 to report any actual or potential risks to the safety or welfare of pupils to the Designated Safeguarding Lead (DSL)

### **4 Pastoral and Health & Safety**

- 4.1 to work co-operatively to create a safe, purposeful and positive working environment for pupils and staff
- 4.2 to comply with the Health & Safety policies and Medical & First Aid policies and procedures and to co-operate with colleagues to achieve high standards of health & safety

### **5 Community Outreach**

- 5.1 to support our sponsored primary school, Messing Primary School, and Catholic independent schools in Brentwood Diocese, by sharing joint INSET
- 5.2 sharing good practice and resources
- 5.3 to support New Hall Voluntary Service (NHVS) and other charitable work of the School
- 5.4 to support New Hall Parent Association (NHPA) events
- 5.5 to strengthen the School's reputation and profile as a leading School of its type

### **6 Finance & Sustainability**

- 6.1 to seek to ensure value for money
- 6.2 to consider sustainability and to minimise waste
- 6.3 to contribute ideas for cost saving initiatives

## Salary & Benefits

### Salary

New Hall has its own salary scale. The salary range for this role is £26,785pa-£28,846pa (S2 - S4) depending on experience.

### Pension

Support staff are automatically enrolled in the designated stakeholder pension scheme provided by Standard Life, subject to meeting the qualifying conditions. Pension contribution rates are 5% for employees and New Hall currently matches employee contributions up to 4%.

### Hours of Work

The Early Years Educator works 40 hours per week on a rotational shift basis to cover the opening hours of the Nursery (8.00am-6.00pm). A 30-minute unpaid break is permitted each day.

The Early Years Educator will be required to work on School Open Days, which usually take place on the last Saturday in September and the Saturday of the first Bank Holiday weekend in May. All staff are required to attend INSET (staff training) days. You will also be required to attend the annual Sports Day on a Saturday in the Trinity Term, and attend Exhibition Day, which is usually on the final Saturday of the academic year.

### Holiday Entitlement

The Early Years Educator will be entitled to 35 days' holiday per year, including bank holidays. All holiday is subject to line manager approval. New Hall closes between Christmas and New Year and for bank holidays; staff must set aside annual holiday entitlement to allow for these closures. The period of time for annual closure is kept under regular review and may vary in future years. Holiday should usually be taken during School holidays, as published in the School calendar.

## 'Only at New Hall'

The School boasts traditions unique to New Hall, as well as distinctive facilities rarely found in an educational setting. Below are some of our state-of-the-art facilities, as well as annual School events which celebrate our ethos and community spirit.



In addition to the former Tudor Palace of Beaulieu, 2025 marked the acquisition of New Hall's second Grade I listed building, Boreham House. Plans include our Preparatory Divisions moving to Boreham House, one mile from the New Hall campus.



International Business & Languages Centre (IBLC)



Chaplaincy Chambers



Two Racewood Equestrian Simulators



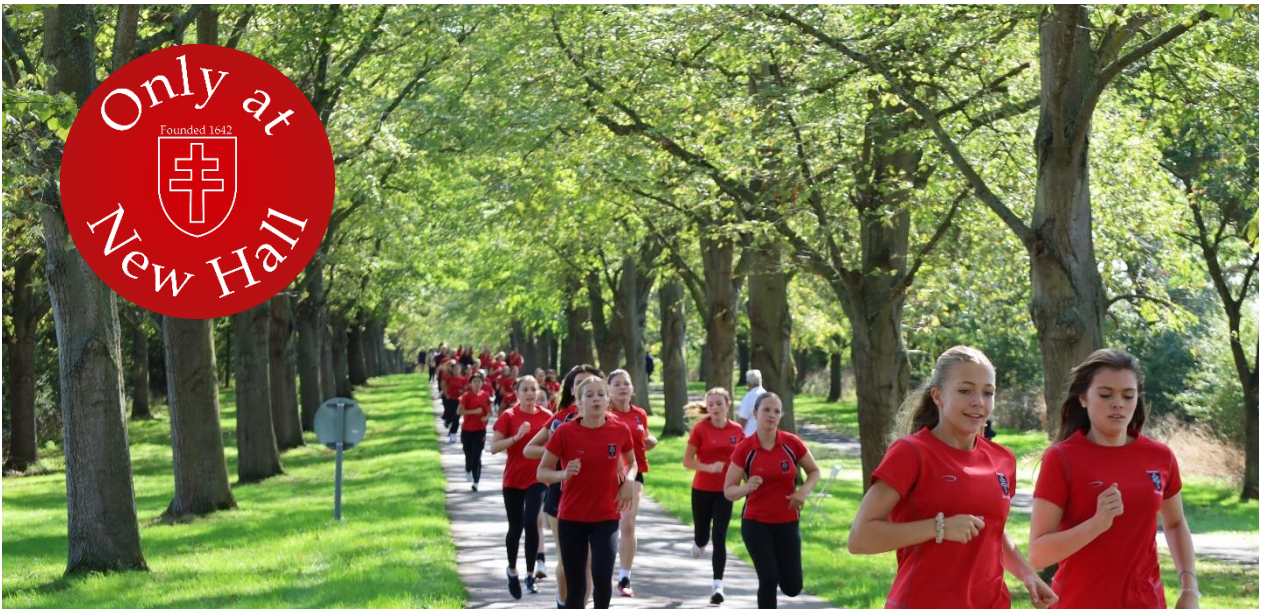
Learn-to-Ride Centre



New Hall Beach



Campion House En-Suite Rooms



Annual Avenue Run down our historic tree-lined drive,  
part of our Grade II listed Park and Gardens



Easter at New Hall



Beaulieu Park Singers | Community Choir



Annual Oxbridge Dinner



Foundation Day Singing Competition



Annual Culture Day



New Hall Come Dancing Charity  
Competition

# Application Process

For further details regarding New Hall School, or an opportunity to discuss the role, please contact Human Resources at [hr@newhallschool.co.uk](mailto:hr@newhallschool.co.uk) or telephone: 01245 467 588.

**Social Media:** Instagram: @newhallschool

The process is as follows:

1. Applications should be made electronically via the School's website <https://www.newhallschool.co.uk/about/job-opportunities/>
2. Applications will be considered on a rolling basis
3. Interviews will take place on a rolling basis

The successful candidate may take up the role as soon as possible, depending on notice and completion of pre-employment checks. Please note: to comply with KCSIE and Safer Recruitment policies, applications via CV are not accepted.

## Staff Benefits & Staff Wellbeing

### Technology

New Hall is committed to promoting the digital literacy of our students. Staff are provided with a School laptop.



### Campus

Staff can explore the School's extensive outdoor learning areas across our 180-acre heritage grounds.



### Library

Staff can make use of the School's well-stocked libraries to support professional development and personal interests.



### Freshly Prepared Meals

At New Hall, staff can enjoy a delicious, freshly prepared 3-course meal every day during term time - free of charge. It is a great way to take a break, refuel, and catch up with colleagues, all while enjoying the same high-quality meals that make our dining experience so special.



### Leadership Pathways

New Hall's investment in staff is shown by the significant number of internal promotions: 79 current staff (27%) have had at least one internal promotion, with 39 of these staff being promoted more than once and 16 staff being promoted more than twice.

The School has a record number of staff who have gone on to Headship/Deputy Headship (15 in recent years).



### Health & Wellbeing

At New Hall, staff wellbeing is important to us. Staff have access to a free annual medical check at our Health & Wellbeing Centre, book convenient on-site appointments with our School Nurses, have access to flu vaccinations at a subsidised cost, and have access to 24/7 counselling support.

School bikes are also available for staff to get around site in a fun and eco-friendly way.

### Continuing Professional Development

The School has a generous CPD budget, which is exceptional in including full or part funding for degrees, diplomas, MA/MPhil qualifications, PGCEs, DELF/DELE modern languages courses, finance qualifications (CIPP, CIMA, ACCA, AAT), HR qualifications (CIPD), music lessons and even driving lessons!

The School runs apprenticeship schemes (Early Years, Chaplaincy, horticulture). New Hall has taken a lead in training teachers, investing £250k in training teachers over a 5-year period.



## Staff Socials



Every Friday after work during term time, staff are welcome to unwind in the Denford Bar - a great spot to relax and socialise with colleagues at the end of the week.



## Transport

An electric vehicle fleet is available to staff for business use and staff have complimentary access to the School's bus network.

## Long Service Awards



New Hall has annual long service awards, in 5-yearly intervals from 10 years, for the many staff who reach milestones of 10+ to 40+ years. Currently, 57 members of staff have given service here for 10 years or more.

## Parking

Complimentary on-site parking is available for all staff.



## Sport Facilities

Staff and their immediate family are able to make use of New Hall's outstanding sport facilities. This includes use of our 25-metre, 6-lane indoor swimming pool, 10 floodlit tennis & netball courts, 2 outdoor basketball courts, Fitness Suite, which comprises a range of cardiovascular equipment and free weights, and the School's Athletics track.



## Activities & Clubs

Staff can enjoy clubs designed just for them - from the staff choir to ballet and language lessons - offering a great chance to learn something new, stay active, and connect with colleagues. And if you have a passion that you want to share, there is always the opportunity to set up your own club, making our community as diverse and dynamic as the people within it.

## Community

Many staff recommend roles at New Hall to friends and family, and several couples have met and married at New Hall!

Recently, three generations of one family worked at New Hall, as support staff. The School employs a high number of Old Fishes (alumni), with typically 8-12 on the staff each year. Several former staff have become Governors of the School, Directors of New Hall's Multi Academy Trust or volunteers with the New Hall Voluntary Service (NHVS).



## Tea & Coffee Provision

Staff enjoy complimentary tea and coffee throughout the day in dedicated staff rooms.



## Staff Benefits & Staff Wellbeing (continued)

## Enhanced Holidays

Enjoy additional days of holiday, the ability to take holiday in term time, and the Christmas to New Year School closure, that ensures an extended break for all at this time for family and friends.

## Vocations & Faith Development



## Nursery

New Hall runs an on-site Nursery for 90 children aged 1-4. Staff children have priority for places, which may be part time or full time. Staff have the option of a term-time only place, which reduces the annual cost.



Staff have access to our beautiful Chapel and prayer spaces, and vibrant Chaplaincy. Staff may volunteer with the New Hall Voluntary Service (NHVS) or support our sister community in Rwanda, with opportunities for voluntary work overseas. Funding is provided for courses (eg the CCRS, A Level RS, organ lessons, an MA in Theology/ministry/Catholic leadership).

Staff may join groups for faith development, training in ministries and liturgical music. There are daily opportunities for collective worship: Adoration, morning and evening prayer and Mass. The Careers & Vocations Department and Chaplaincy support staff in discernment of their vocation.

## Connectivity

Beaulieu Park railway station is at the entrance to New Hall's Avenue: 30 minutes to Stratford and 38 minutes to London Liverpool Street. The Elizabeth Line at Shenfield (13 minutes by train) terminates at Heathrow airport. There are nearby airports: London Stansted, London Southend and London City.



## Events

From equestrian displays, inspiring art exhibitions and music concerts, to thrilling sporting fixtures, dance performances, and theatrical productions, there is always something for staff to enjoy. Our exceptional facilities provide the perfect setting for these occasions, fostering a strong sense of community spirit and pride.

Staff are warmly encouraged to attend and take part in the many events throughout the year - whether supporting students, collaborating in creative projects, or simply enjoying the lively atmosphere that makes New Hall School such a special place to work.

## Location

Enjoy the best of both worlds: countryside and city. New Hall has a London commuter station (Beaulieu Park) at its front gate, and benefits from the vibrant and growing facilities of the Cathedral city of Chelmsford. Facilities abound in the city centre and nearby: sports centre and ice rink; farmers markets; shopping centres and retail parks; museum; bars and restaurants; park with weekly Park Run; activity/recreational facilities for parties and socials; centres for equestrian, canoeing and paddleboarding. Within a 25 minutes drive is a dry ski centre. A short drive takes you to the extensive Essex coast and Mersea Island.



## About New Hall School

New Hall School is a thriving co-educational boarding and day school for 1,400 students aged 1-19. Founded in 1642, it is one of the oldest Catholic schools and the largest Catholic boarding & day school in the UK. The School's ethos continues to be inspired by its founding Religious Community, the Canonesses of the Holy Sepulchre.

*"True community is where people listen to each other;  
where the marginalised and excluded are included".*  
(Canonesses of the Holy Sepulchre, 2023)

The charism of our founding Religious Community is service and hospitality; this is lived out in the actions of the volunteers that take part in this thriving and popular programme. Founded in 1978, the New Hall Voluntary Service (NHVS) has been providing help and support to vulnerable members of our local community for over 45 years. Volunteering for NHVS promotes an enduring community spirit, nurtures responsible citizenship and encourages student-led charitable endeavour throughout the local area.

New Hall is a warm, welcoming, and supportive community, with a staff of around 300. Staff enjoy an exceptional working environment. The main campus occupies the stunning Grade I listed former Tudor palace of Beaulieu, and is surrounded by 75 acres of beautiful parkland and heritage gardens. The School's conference and events venue is at the Grade I listed Boreham House, with 35 acres of grounds, one mile away. The School also owns New Hall Park Farm, a 70-acre site with an equestrian centre, 3-miles from New Hall.

Beaulieu Park railway station is at the entrance to New Hall's Avenue: 30 minutes to Stratford and 38 minutes to London Liverpool Street. The Elizabeth Line at Shenfield (13 minutes by train) terminates at Heathrow airport. There are nearby airports: London Stansted, London Southend and London City.

Chelmsford is a dynamic and welcoming city, with a population of around 190,000. Recognised as the *Sunday Times*' 'Best Place to Live in the East' in 2025 and 2018, and listed among the top ten best places in the East of England in 2019, it offers an exceptional quality of life. The city's rich history, vibrant cultural scene, and strong sense of community make it an attractive place to live and work.

An extraordinary school with a distinctive character and close-knit community, New Hall is popular with local, national and international families. The School is oversubscribed at key entry points. An early adopter of the diamond model, it offers a vibrant education for girls and boys, with single-sex teaching in the Senior Divisions for Years 7 to 11, and co-education in the early years, Preparatory Divisions and Sixth Form.

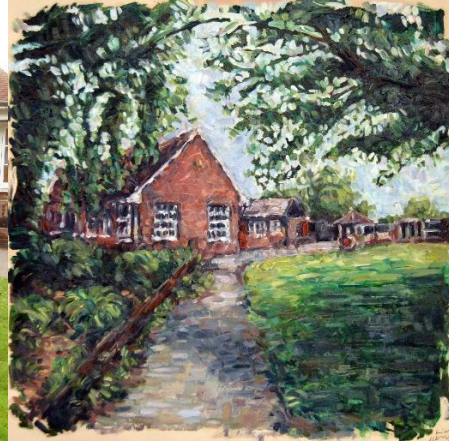
New Hall prides itself on the quality of teaching and learning. Seeking the highest possible levels of academic attainment is a priority. The School is equally proud to offer a rounded education, focused on developing the whole child. There is a strong emphasis on co-curricular enrichment – as recognised in its recent ISI Inspection reports. The School excels in sport, having recently been awarded Outstanding Sport in a Large School by the Independent Schools Association (ISA). Alongside traditional sports, it is home to the largest independent school ski team, benefits from a professional cricket coach, and is proud to include elite national golfers within its student body. With a well-established on-site farm, woodland school, and equestrian centre, the School makes the most of its unrivalled space to embed the many benefits of outdoor education into the curriculum for all age groups.

The School has made extensive capital investments across its estate over the past 20 years. Recent developments include: a purpose-built Nursery, a Sixth Form International Business & Languages Centre, a canopied outdoor performance space, a Chaplaincy suite, outdoor basketball courts, and a second Cookery room.

In 2012, the School established the New Hall Multi Academy Trust (NHMAT) and became sponsor of nearby Messing Primary School – an Ofsted-rated ‘Good’ school. It is now looking ahead to new ventures and exciting opportunities to further grow its partnership work.



*Messing Primary School*



*Painted by New Hall Alumni, Liam Merrigan*

## Inspection outcomes and accolades for New Hall School and its staff:

2025	<b>Diocese of Brentwood</b>	<b>Catholic Schools Inspectorate</b>	<b>Outstanding</b>
2025	Independent School Association Awards (ISA)	ISA Senior School of the Year Awards	Finalist
2025	Muddy's Best Schools Awards	Championing Sustainability	Highly Commended
2025	Muddy's Best Schools Awards	Passionate About Sport (Prep)	Highly Commended
2024	Independent School Association Awards (ISA)	Outstanding Engagement in the Community	Finalist
2024	Independent Schools of the Year Awards	International student experience	Finalist
2024	Muddy Stilettos	Best Schools Awards for Best Experiential Learning (Modern Languages learning through Cookery)	Winner
<b>2024</b>	<b>Independent Schools Inspectorate (ISI)</b>	<b>School Inspection</b>	<b>All standards met and NHVS a 'Significant Strength'</b>
2024	The Boarding Schools' Association (BSA)	Best Community Work	Finalist
2024	England Netball	Netball Teacher of the Year Award	Finalist
2023	Independent School Association Awards (ISA)	Outstanding Sport in a large school	Highly Commended
2019	Brentwood Diocese	Citizenship Award	Awarded
2023	Starz UK	Most Outstanding Dance School	Winner
2023	Trinity	Champion Centre	
2023	Independent Schools of the Year Awards	Independent Prep School of the Year	Finalist
2022	The School Games Mark	School Games Mark Award	Platinum
2022	Independent Schools of the Year Awards	Innovation Award for an Outstanding new initiative	Finalist
2020	Lawn Tennis Association	Education Venue of the Year award for Essex	Finalist
<b>2019</b>	<b>Independent Schools Inspectorate (ISI)</b>	<b>Regulatory Compliance Inspection</b>	<b>All standards met</b>
<b>2019</b>	<b>Ofsted</b>	<b>EYFS Inspection</b>	<b>All standards met</b>
<b>2019</b>	<b>Independent Schools Inspectorate (ISI)</b>	<b>Material Change Inspection (increase of student roll to 1,500 and inclusion of age range 1-3 years)</b>	<b>All standards met</b>
2019	National Westminster Bank	Project Respond competition - National Award	Winner
2019	Investing in Volunteers Award		Awarded

2019	Brentwood Diocese	Citizenship Award	Awarded
2018	Essex Digital Awards	School, Education or Charity Website	Finalist
2018	Essex Digital Awards	Overall Website of the Year	Silver
<b>2018</b>	<b>Diocese of Brentwood</b>	<b>Denominational Inspection</b>	<b>Outstanding</b>
2017	Volunteer Essex	Voluntary Community Service Award in the 'Who Will Care? Awards 2017	Commendation
2017	Nationwide	Award for Voluntary Endeavour	Winner
2016	TES Independent School Awards	Independent School of the Year	Winner
2016	TES Independent School Awards	Governing Body of the Year	Finalist
2016	TES Independent School Awards	Senior Leadership Team of the Year	Finalist
2016	TES Independent School Awards	Financial/Commercial Initiative of the Year	Winner
<b>2016</b>	<b>Independent Schools Inspectorate (ISI)</b>	<b>Educational Quality Inspection</b>	<b>Excellent (highest category)</b>
<b>2016</b>	<b>Independent Schools Inspectorate (ISI)</b>	<b>Focused Compliance Inspection for schools with residential provision</b>	<b>All standards met</b>
2015	TES School Awards	Headteacher of the Year	Finalist
2015	Institute of Groundsmen	Groundsman of the Year	Finalist
2014	Essex Digital Awards	School, Education or Charity Website	Gold
<b>2014</b>	<b>Independent Schools Inspectorate (ISI)</b>	<b>Boarding inspection</b>	<b>Outstanding</b>
2013	Essex Business Awards	Best Growing Business - Large Company	Winner
2013	Essex Business Awards	Excellence in Marketing - Large Company	Winner
2013	Essex Business Awards	Essex Business of the Year	Winner
2013	Essex Business Awards	Community Award - Business Sector	Winner
2013	Pearson Teaching Awards	Pearson Teaching Awards (History)	Longlisted
2013	Pearson Teaching Awards	Pearson Teaching Awards (Physics)	Winner - Teacher of the Year
2013	Pearson Teaching Awards	Pearson Teaching Awards (Biology)	Longlisted
2011	TES Independent School Awards	Outstanding Strategic Initiative	Winner
2005	Institute of Directors' Awards	Institute of Directors' East of England Businesswoman of the Year Award	Winner
2000	Chelmsford Borough Council	The Millennium Award for Helping Young People to Fulfil their Potential	Finalist
1996	Whitbread & Make a Difference Volunteering Awards	Outstanding service to the community	Winner

