



Teacher of Drama

Information for applicants
January 2026



Contents

1. Welcome from the Chief Executive Officer & Executive Headteacher
2. Welcome from the Headteacher
3. Department Information
4. Job Description
5. Person Specification
6. What We Offer
7. Staff Testimonials
8. How to Apply

Beeches Site
North Beeches Road
Crowborough
East Sussex
TN6 2AS

Sixth Form Site
Green Lane
Crowborough
East Sussex
TN6 1DD

01892 603000

www.beacon-academy.org

Facebook: @BeaconAcademyCrowborough
Instagram: @beaconacademycrowborough
X: @Beacon_Academy

Welcome from the CEO and Executive Headteacher Anna Robinson



As the Chief Executive Officer (CEO) and Executive Headteacher (EHT) of **MARK Education Trust**, I am proud to lead three schools in East Sussex: **Beacon Academy** in Crowborough, **Uplands Academy** in Wadhurst, and **Hailsham Academy**, an all-through 2–19 school located in Hailsham and Hellingly.

Together, we are driven by a clear mission:

To provide the best possible education for our students, preparing them for life so they can stand equally alongside their peers locally, nationally, and globally.

Our Journey

I was appointed Headteacher of Beacon Academy in 2015 and became Executive Headteacher of MARK Education Trust in September 2022. Since then, the Trust has grown carefully and responsibly to include Uplands Academy in 2022 and Hailsham Academy in 2025.

During my tenure at **Beacon Academy**, we embarked on a transformational journey. In 2019, we celebrated record-breaking A-Level and GCSE results, with our Progress 8 measure making Beacon the **top-performing school in East Sussex for three consecutive years**. We also ranked **first across Sussex and within the top 1.8% of schools nationally**. Beacon's results continue to reflect academic excellence. Our sixth form students consistently achieve highly, with the vast majority of students securing their first-choice destinations - whether that be university, apprenticeship, or employment.

In 2024, following a rigorous Ofsted inspection, Beacon Academy was judged to be **Outstanding** in all categories.

In September 2022, we welcomed **Uplands Academy** (formerly Uplands Community College) into MARK Education Trust. Located in Wadhurst, East Sussex, Uplands is a good school with vast potential, driven by an inspiring student body and a dedicated team of staff. We are proud of the excellent relationships that have developed between staff and students, underpinned by high expectations and a relentless commitment to ensuring that the focus is on each child as an individual.

Our collective drive and ambition for continuous improvement was recognised and validated in January 2025, when Ofsted confirmed that Uplands is a **Good** school in all categories.

Continued overleaf...

About MARK Education Trust

Together, we make a strong, unified team focused on delivering whole school improvement. Centralised business services support our schools to develop and sustain excellence in every classroom. Our schools remain oversubscribed across year groups - a testament to the dedication and impact of our highly skilled and experienced staff.

Guided by our values, we are growing responsibly and with care. Our growth strategy is implemented thoughtfully to ensure that each of our schools retains its unique identity while remaining connected by our shared vision and continuously striving for excellence through collaboration.

In September 2025, we welcomed Hailsham Community College - now **Hailsham Academy** - into the trust. I spent 16 years at Hailsham, beginning as a PE and English teacher and progressing to Head of School, before moving to Beacon, so Hailsham joining our trust also marks a personally significant milestone in my career. As an all-through 2-19 school, Hailsham Academy strengthens our commitment to inclusive, high-quality education.

Join Us

If you share our ambition, values, and belief in the potential of every child, I warmly encourage you to consider joining Beacon Academy. You will be part of an exceptional team within both a thriving school and a growing trust, united in our determination to provide the very best education for all of our young people.

To find out more about who we are and what we stand for, we invite you to visit our [MARK Education Trust website](#).



Anna Robinson
CEO and Executive Headteacher

Welcome to Beacon Academy

A message from Headteacher Keith Slattery



Thank you for your interest in joining Beacon Academy. I have worked at Beacon for over 20 years and was proud to be appointed Headteacher in 2023. It is a privilege to serve this community and to lead the school on its continuing journey of excellence. In 2024, we were judged **Outstanding in all areas by Ofsted** - recognition of the dedication, professionalism and ambition of our staff and the achievements of our students.

Beacon Academy is a split-site, semi-rural, mixed 11–18 academy with 1,664 students, including over 320 in our thriving Sixth Form. Situated in Crowborough, on the edge of the Ashdown Forest and within easy reach of Tunbridge Wells, Brighton, Eastbourne and the south coast, we are an oversubscribed school with a diverse, non-selective intake from more than 10 primary schools and beyond.

Our Sixth Form, located on its own dedicated campus just minutes from our main site, attracts not only our own students but also those from local and international schools. We are proud that the vast majority of our students go on to secure places at their first-choice university, apprenticeship or employment.

At Beacon, we are uncompromising in our ambition for every student. We deliver a broad, knowledge-rich curriculum within a calm, safe and purposeful environment. Our culture is built on unapologetically high standards, a relentless focus on teaching and learning, and exceptional pastoral support. Alongside academic excellence, we place equal emphasis on developing happy, responsible and well-rounded young people – equipping them with the knowledge, character and confidence to thrive in life beyond school. This is achieved through our outstanding support networks, high expectations and a wide range of enrichment opportunities.

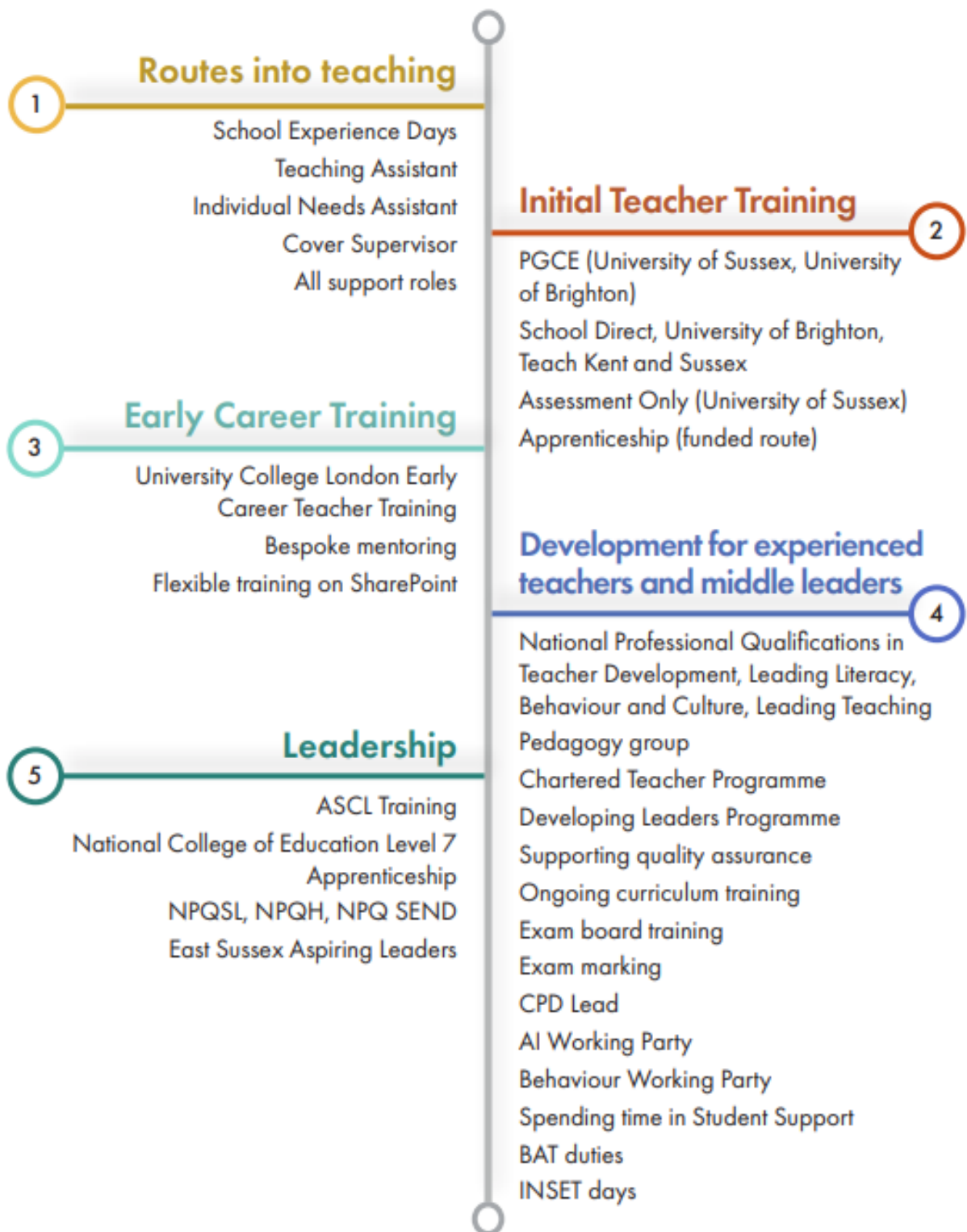
As part of MARK Education Trust, together with Uplands Academy and Hailsham Academy, we are motivated, ambitious, resourceful and knowledgeable. Our collaboration ensures that we remain outward-facing, innovative and committed to our shared vision of providing the very best education for every child.

If you share our values and our drive to inspire, challenge and support students to achieve their very best, I warmly invite you to consider joining our exceptional team.

A stylized, handwritten signature in black ink, appearing to read 'Keith Slattery'.

Keith Slattery
Headteacher

Teachers' Professional Development



Department Information

Drama is one of the oldest forms of creative arts, it is fundamental in learning what it means to be human and collaborating with others to come together and solve problems. Students in Drama will initially learn through storytelling, performing, designing and becoming a member of the audience. As students' progress at Beacon, they will develop a deep knowledge of the key practitioners, historical, political, and sociological context necessary to foster a love of drama and theatre. This will instil within students the confidence to take part in and understand the importance of performance, helping them to shape their own voice and giving them autonomy over topics they are passionate about.

At Beacon we consider the history of theatre to be of great importance when recognising the progression of theatre as a subject. We proudly study a range of plays dating back to Ancient Greece right through to modern disciplines of style and structure. Our curriculum continues to evolve as our school does, exploring rich and diverse cultures to ensure students leave being world ready. Students will approach the world of Drama as performers, director, and designer in a rigorous practical, hands-on way, which is carefully scaffolded to embed and deepen their theoretical and contextual understanding of the ways in which drama works.

Departmental Teaching Structure	Head of Department: Miss A Wallace Teachers: Mrs L Marchant, Mrs L Marshall
Curriculum	KS3: YR7: Storytelling, Charlie and the Chocolate Factory, Midsummer Nights Dream, Oliver Twist, Devising YR8: History of Theatre, Stanislavski, The Tempest, Murder Mystery, Shakespeare and stage combat, The Sweetness of the Sting YR9: Greek Theatre, Lord of the Flies, Frantic Assembly, Brecht, Kneehigh, Devising KS4: GCSE Edexcel Drama KS5: A level Drama and Theatre studies Edexcel
2025 Results KS4 & KS5	2024 KS4: 78% 4 and above 2025 KS4: 50% 4 and above (very small cohort) 2025 KS5: 100% B and above
Facilities	Beeches Site: Drama Studio with stage and lights Main Hall Costume Cupboard Props Cupboard Resources Room Green Lane Site: Studio with stage and lights
Resources	Scripts, props cupboard, costume cupboard, working lighting rig, moveable staging blocks, flats in classrooms and main hall. Use of recording studio for sound effects. Technician to support all exam work and performances.
Key areas for development	Continuing to engage Year 9 students for uptake at GCSE. Continued practice on Component 3 exams for both GCSE and A level. Work towards larger school performances with collaboration across Music and Dance.

Job Description - Teacher

JOB TITLE:	Teacher
JOB PURPOSE:	To ensure that the negotiated aims and objectives of the department (which reflect those of the Academy) are achieved through classroom teaching and contribution to department policy via department meetings.
ACCOUNTABLE TO:	Head of Department/Senior Link
ACCOUNTABLE FOR:	The effective implementation of individual lessons / schemes of work and student standards and achievement.
KEY ACCOUNTABILITIES	KEY TASKS
With Students Contribute to the development of the curriculum and its successful implementation	<ul style="list-style-type: none"> • To prepare and deliver high quality lessons to students of all ages and levels of prior attainment in line with the department curriculum and pedagogy. • To adapt teaching so that students of all levels of prior attainment and those with SEND and/or disadvantage make strong progress. • Maintain a deep and up to date knowledge of your subject and its pedagogy • Establish excellent classroom behaviour and build constructive relationships with students • Give regular feedback to students on their learning. • Assess students' progress and report to parents periodically in accordance with the Academy guidelines. • To be a form tutor
With Colleagues Communicate effectively with members of staff in the Academy and maintain a collegiate working environment.	<ul style="list-style-type: none"> • Contribute to department meetings with knowledge and enthusiasm • Maintain effective contact with parents, tutors, the Head of Department and Year teams to ensure students are supported. • Contribute positively and constructively to Year team meetings.
Wider Responsibilities Develop department resources and provide an effective, safe learning environment. Contribute to the review , development and presentation of department policies and objectives.	<ul style="list-style-type: none"> • Take a full role in the creation and adaptation of high-quality learning resources. • Effectively carry out tasks as directed by the Head of Department with support and guidance from other team members. • Deliver enrichment to develop students' cultural capital and build their sense of belonging.

Beacon's teachers are also accountable for promoting a positive image of the value of education within the student body of the Academy and in the wider community. Other whole Academy responsibilities include tutoring, or a commitment to the Academy pastoral system, attendance at INSET and other reasonable duties as directed by the Headteacher.

This job description sets out the duties of the post at the time it was drawn up. The post holder may be required from time to time to undertake other duties within the school as may be reasonably expected, without changing the general character of the duties or the level of responsibility entailed. This is a common occurrence and would not justify a reconsideration of the grading of the post.

Person Specification

ESSENTIAL	DESIRABLE
Qualifications <ul style="list-style-type: none">• Graduate & Qualified teacher• Strong academic background	Qualifications <ul style="list-style-type: none">• Evidence of commitment to professional development
Experience <ul style="list-style-type: none">• Secondary teaching experience• A confident practitioner with the drive and ambition to develop further• Excellent knowledge of assessment strategies and their effective implementation.	Experience <ul style="list-style-type: none">• Teaching students at all levels of prior attainment.• Experience of working in an impact led culture• Experience of teaching at Key Stage 3, 4 and/or 5.
Philosophy <ul style="list-style-type: none">• Commitment to comprehensive education and inclusive teaching;• A belief in the transformational power of education;• High aspiration for all students;• Desire to constantly improve and refine your subject knowledge and teaching practice.	
Personal Qualities <ul style="list-style-type: none">• Reflective and adaptable;• Enthusiastic, tenacious with a positive attitude;• Self-motivated and a team player;• Resilient and solution focused.	

Beacon Academy is committed to providing the best possible care and education to its students and to safeguarding and promoting the welfare of children and young people. The Academy is also committed to providing a supportive and flexible working environment to all its members of staff.



Why join our school and trust?

"There is a strong sense of working together, with staff frequently going the extra mile for their pupils. Staff are proud to work at Beacon. They value the trust that leaders place in them. Staff at all levels feel very well supported, including teachers in the early stages of their careers. They value the careful consideration that leaders always give to their well-being and workload." OFSTED

What We Offer

Professional Growth

- High-quality CPD
- Leadership development pathways
- Internal promotion pathways
- Access to trust-wide and external training networks and opportunities
- Recognition for excellence

Staff Wellbeing

- Flexible working
- Mental health and wellbeing programmes
- Opportunities to share your views through staff surveys and forums
- Staff recognition initiatives

Staff Benefits

- Benchmarked salary scales
- Generous annual leave entitlement
- Local Government Pension Scheme/Teacher's Pension Scheme
- Pay Policy
- Care First – confidential support for all staff
- Paid sick leave for teaching staff and after 1 year's service for support staff
- Free on-site parking
- Blue Light Card

Our Location and Community

Crowborough is the second largest inland town in East Sussex and the highest town in the High Weald Area of Outstanding Natural Beauty. It sits on the very edge of the Ashdown Forest which offers wonderful opportunities to explore.

Crowborough is an excellent town with plenty of things to do for families together with good transport connections to the south coast, Royal Tunbridge Wells and London.





A centre of excellence

Our high expectations and inclusive culture ensure that all students are inspired, challenged and supported to make excellent progress.

Judged by Ofsted to be *Outstanding* in all five inspection categories.
April 2024

Staff Testimonials

Beacon Academy is a friendly, supportive and inclusive place to work. The staff here show a positive commitment to the students who attend Beacon Academy and also to each other in the roles we do. Each member of the team is made to feel as though they fit in at Beacon Academy, with opportunities given to progress in their professional development and in remits they wish to pursue.

I recommend this school to anyone who wishes to work in an open and inclusive environment and who really values their time as a teacher. It will not be wasted at this outstanding school with high values and dedication to the profession.

Teacher of English



Joining Beacon Academy back in September was and will always be a focal point of my career. I have found our colleagues here at Team Beacon to be extremely kind and welcoming which in turn has helped me to feel comfortable and safe here in my new role. I feel like no question is a silly question and I am genuinely valued for my contributions to the community. It is an honour to work here. People are kind to students and students are often kind in return. It is a feeling here like no other and I feel privileged to be a part of this fantastic school.

ECT – Teacher of History

Beacon Academy is like one big family, all staff are supportive not only to the students but also to all of their colleagues whether they be teaching or support staff. The Trust encourages and supports staff in continuing their own educational studies which improves the knowledge of individuals and their departments.

Support Staff

How to Apply

Once again, thank you for your interest in the post of Teacher of Drama.

Please note that applications will be considered as they are received and you are therefore advised to submit your application as early as possible, as some interviews may take place, and an appointment may be made, before the closing date is reached for this position.

If, like us, you are passionate about providing the best possible education for all students in an outstanding school with a culture of high expectations and ambition, please ensure you:

1. Complete the statutory application form. Applications for this post should be made through [My New Term](#)
2. Provide Information to support your application, paying particular attention to the Person Specification. Please include any achievement data that is applicable to the role you are applying for.
3. Provide two references, one of whom must be the Headteacher from your current school or most recent significant employer.

The Academy recognises that, in order to achieve these aims, it is of fundamental importance to attract, recruit and retain staff of the highest calibre who share this commitment. Please refer to our Recruitment, Selection and Disclosure Policy and Procedures which supports our statutory obligation to comply with Keeping Children Safe in Education 2025.

If you wish to arrange a visit or have an opportunity to discuss this post informally, please contact our HR department on:

01892 603000, or email hr@beacon-academy.org



Our Values:

How will **you**
make your **MARK?**



Manners



Acceptance



Respect



Kindness



How will **you**
make your **MARK?**



Motivated



Articulate



Resilient



Knowledgeable



MARK
Education
Trust



**BEACON
ACADEMY**

AMBITIOUS FOR EXCELLENCE



**HAILSHAM
ACADEMY**

AMBITIOUS FOR EXCELLENCE



**UPLANDS
ACADEMY**

AMBITIOUS FOR EXCELLENCE