



## Assistant School Chaplain Job & Person Description



Kingsland C.E Academy and Lighthouse Centre (including the Lantern Cafe) are looking to appoint a caring and enthusiastic Assistant School Chaplain to join our friendly and supportive team from September 2026.

**Prospective candidates should have a desire to make a difference to the lives of young people and focus on encouraging a relationship with God throughout our school, supporting the Christian Ethos of the community.**

The post would involve working in partnership with the Trust Chaplain, Rev. Rob and with Senior Leaders.

Visits to the school are welcomed, please contact our school office via email [kingslandoffice@sbmat.org](mailto:kingslandoffice@sbmat.org) or by phone on 01782 229138 to make arrangements.



### *A Christian Ethos*

As a Church of England Academy, our Christian ethos is at the heart of everything we do. We are committed to nurturing the spiritual growth of both our pupils and staff within a caring and supportive learning community. We enjoy strong links with our local church, regularly attending services and playing an active role in parish life. In return, the school is deeply involved in the life of the church, from Year 6 pupils sharing in the midweek Communion service each half term, to whole-school Christian celebrations held at St Mary's.



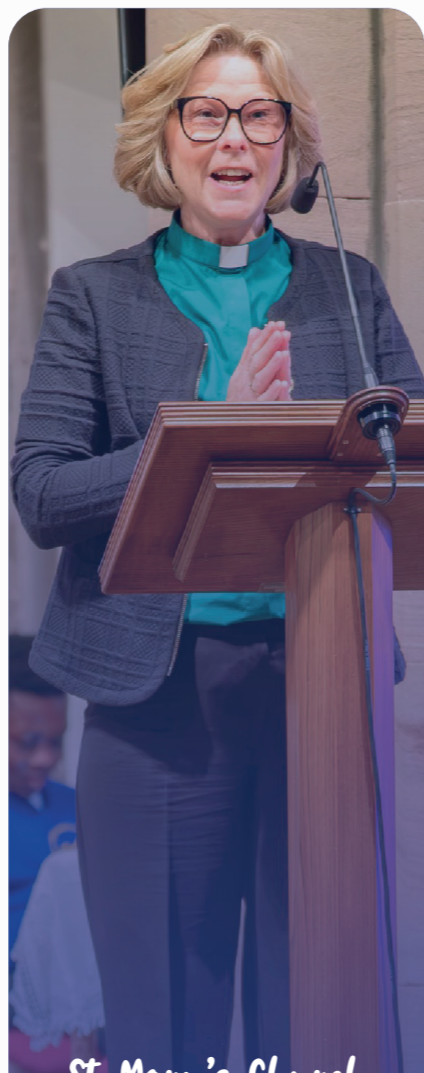
### *Walking in the Light*

At Kingsland, we are walking in the light with Jesus. Together, we aim to develop lifelong learners through an exciting, creative approach to education. We inspire our children to believe in themselves, nurture their talents and encourage them to pursue their dreams with confidence.



### *Shining in Our Community*

The Lighthouse Centre represents our vision for the wider community and is closely linked to the Church of England's vision for education: "Life in all its fullness." By building strong relationships with everyone we serve, we aim to enrich lives through wisdom, knowledge, and skills. We are passionate about fostering hope and aspiration, particularly within areas of deprivation, while promoting dignity and respect for all.



### *St. Mary's Church*

Kingsland is proud to be the parish school for Bucknall, and worship is an important part of our life at St Mary's Church. Communion service each half term, to whole-school Christian celebrations held at St Mary's.



### *A place where you belong*

The Lantern Café, based within our school, is open daily and offers a welcoming first point of contact for our community. It provides a safe and friendly space where we can offer support and guidance. We offer help in many areas, including mental health support, medical advice, healthy eating (including holiday provision for children), speech and language therapy, reading support, and guidance with debt management and budgeting.



### *Lifelong Learners*

In partnership with the clergy team and the St Mary's congregation, we engage with over 100 children each week through groups such as Toddlers, Lightbeams, Ignite and Fusion. These sessions provide opportunities for children to have fun, build friendships, and develop new skills.

We are also developing strong family partnerships, helping parents learn new skills or build on existing ones.

We aim to boost confidence and empower parents to become volunteers and, in time, to lead projects within the Lighthouse Centre, our community, and beyond.



*The Christian vision is cherished by both the trust and the school. It informs every action and interaction, ranging from the strategic work of trust leaders to the daily decisions of staff.*



### Pastoral Care & Student Support

In this role, the Assistant School Chaplain provides day-to-day pastoral and emotional support to pupils, ensuring they have someone approachable and trustworthy to turn to. They support young people who may be facing personal, social, or emotional challenges, offering a calm and reassuring presence. When more difficult situations arise, such as experiences of crisis, grief, or distress, they assist in responding sensitively and appropriately under the guidance of the Trust Chaplain and safeguarding team. A key part of the role is also encouraging positive wellbeing, resilience, and healthy relationships across the school.

### Job Purpose

The Assistant School Chaplain plays an important role in supporting the pastoral, spiritual, and emotional life of the school. Working closely with the Trust Chaplain, they help create a safe, welcoming, and inclusive environment where pupils, staff, and families feel supported and valued. This is a pastoral role at heart, centred on being present, building positive relationships, and offering care to those in need.

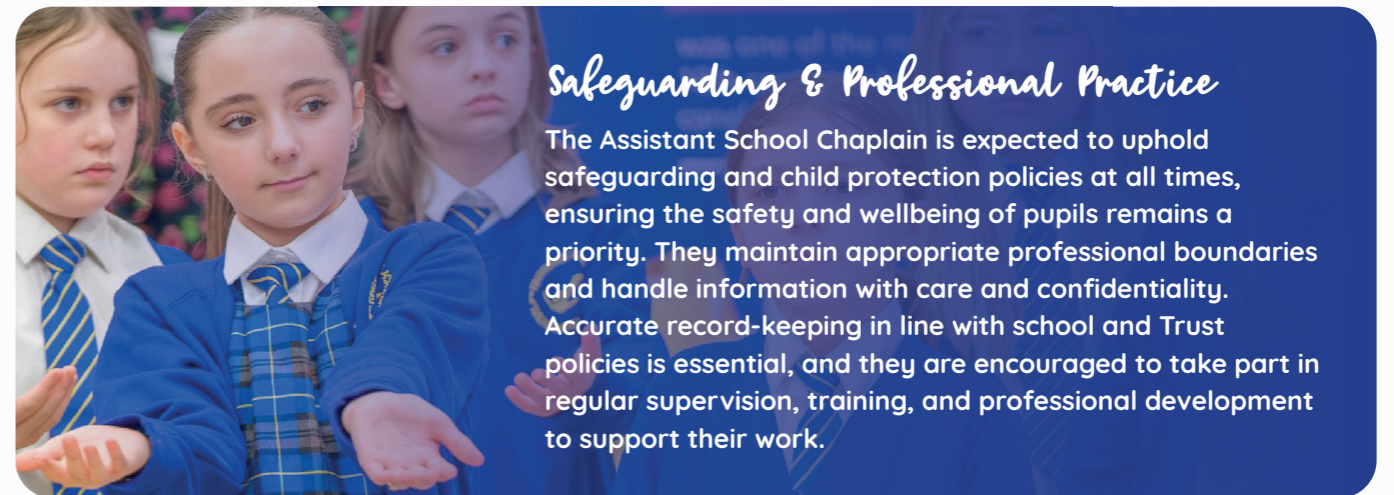


### Spiritual Life & Worship

The Assistant School Chaplain contributes to the spiritual life of the school by supporting the planning and delivery of assemblies, acts of worship, and opportunities for reflection and prayer. They help engage pupils in meaningful, age-appropriate activities that encourage reflection and personal growth. The role may also involve supporting retreats, reflection days, and events linked to faith or shared values, while consistently modelling and promoting the ethos and values of the school and Trust.

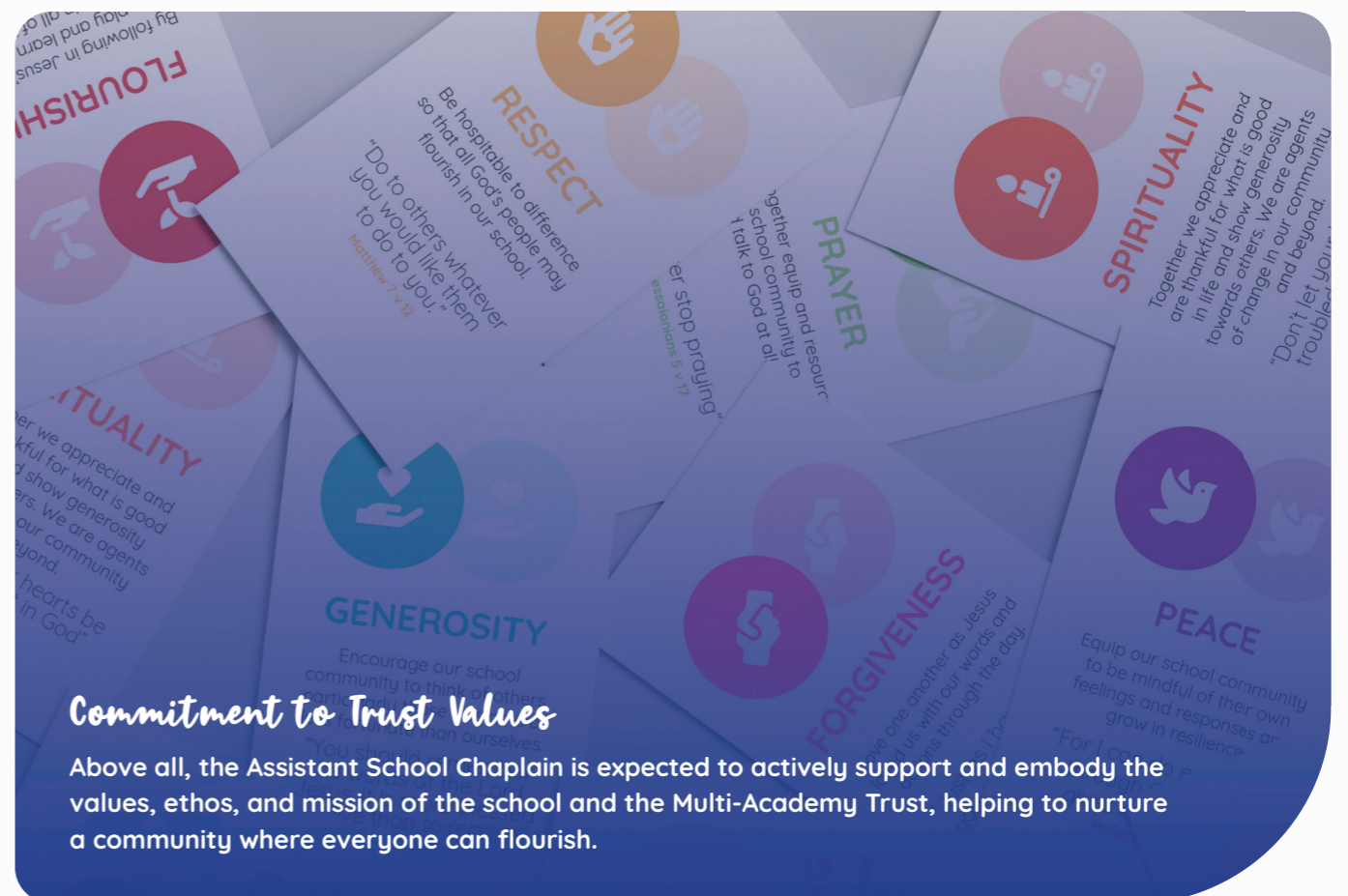
### Trust & School Community

Working collaboratively is central to this role. The Assistant School Chaplain works alongside the Trust Chaplain and wider pastoral and wellbeing teams, contributing to a joined-up approach to care and support. They may also support chaplaincy work across multiple schools within the Trust when needed. Building strong, positive relationships with staff, families, and external partners is an important aspect of the role, as is contributing to wider Trust initiatives that promote spiritual development.



### Safeguarding & Professional Practice

The Assistant School Chaplain is expected to uphold safeguarding and child protection policies at all times, ensuring the safety and wellbeing of pupils remains a priority. They maintain appropriate professional boundaries and handle information with care and confidentiality. Accurate record-keeping in line with school and Trust policies is essential, and they are encouraged to take part in regular supervision, training, and professional development to support their work.



### Commitment to Trust Values

Above all, the Assistant School Chaplain is expected to actively support and embody the values, ethos, and mission of the school and the Multi-Academy Trust, helping to nurture a community where everyone can flourish.



**LIGHTHOUSE**  
SHINING IN OUR COMMUNITY



 **DIOCESE OF LICHFIELD**



**ST. BART'S**  
MULTI-ACADEMY TRUST