



Primary Teacher

Recruitment Pack
Annually (FTE) Teachers Pay scales

Exceptional Educational Experience



Dan Morrow
Trust Leader



Clare Ridehalgh
Deputy Trust Lead



Rich Baker
Deputy Trust Lead

Welcome

At Cornwall Education Learning Trust (CELT), our mission is clear: to provide every learner with an **exceptional educational experience**. One that enables them to thrive, achieve and succeed in life. We believe in a **100%** mindset, that every learner, in every classroom, in every school, deserves the very best we can offer. For us, 100% means no compromise: no learner left behind, no community overlooked, and no opportunity wasted.

Our strategic goals reflect this ambition. We are committed to empowering and growing our people, building an ambitious all-through entitlement, forging exceptional relationships with our communities, transforming provision through meaningful partnerships, and leading an ethical, effective and innovative organisation. These are not just aspirations; they are promises that shape the way we work and the culture we are building together.

Joining CELT means becoming part of a values-driven trust where collaboration, innovation, and care for people are at the heart of all we do. If you share our 100% mindset, are passionate about education, and want to make a tangible difference to learners and communities across Cornwall, we would be delighted to welcome you to CELT.

Dan Morrow
Trust Leader

EXCEPTIONAL
EDUCATIONAL
EXPERIENCE

100%





Welcome from our Chair of Trustees

Our values are at the heart of everything we do. We believe in the power of **Collaboration**, building strong relationships and working together as one team to achieve our collective goals. We are committed to **Empowerment**, creating a culture where initiative, innovation and trust flourish, and where every individual feels valued, respected and motivated.

As a Trust, we are grounded in promoting **Leadership**, sharing a moral and ethical purpose to improve the lives of others and make a lasting difference for our learners and communities. And we embrace **Transformation**, approaching change positively so that we can all become our best selves and do our best work.

These values guide every decision we make and every action we take. They are the foundation of our Trust and the reason we can offer such exceptional opportunities for our learners and staff. If you choose to join CELT, you will be part of a values-driven organisation where people are supported to grow, contribute, and thrive.

Sally Foard
Chair of Trustees



Sally Foard
Chair of Trustees



Cornwall Education Learning Trust

Our Family of Schools

Our family of schools have the privilege of educating 9000 learners across mid-Cornwall. We are passionate about collaborating and ensuring 100% of our learners have an exceptional educational experience.



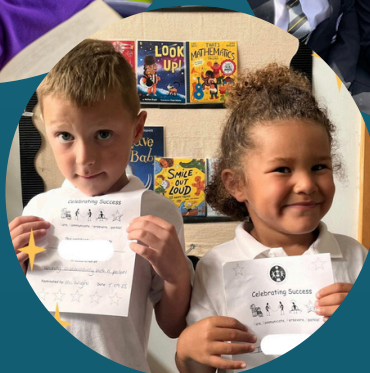
9000
LEARNERS



1200
CELT STAFF



16
SCHOOLS



PRIMARY TEACHER JOB DESCRIPTION

Purpose of the role:

- Be responsible for the learning and achievement of all pupils in the class/es ensuring equality of opportunity for all
- Be responsible and accountable for achieving the highest possible standards in work and conduct
- Treat pupils with dignity, building relationships rooted in mutual respect, and at all times observing proper boundaries appropriate to a teacher's professional position
- Work proactively and effectively in collaboration and partnership with learners, parents/carers, governors, other staff and external agencies in the best interests of pupils
- Act within the statutory frameworks, which set out their professional duties and responsibilities and in line with the duties outlined in the current School Teachers Pay and Conditions Document and Teacher Standards
- Take responsibility for promoting and safeguarding the welfare of children and young people within the school

Teaching:

- Deliver the curriculum as relevant to the age and ability group/subject/s that you teach;
- Be responsible for the preparation and development of teaching materials, teaching programmes and pastoral arrangements as appropriate;
- Be accountable for the attainment, progress and outcomes of pupils you teach;
- Be aware of pupils' capabilities and their prior knowledge - plan teaching and differentiate appropriately to build on these demonstrating knowledge and understanding of how pupils learn;
- Have a clear understanding of the needs of all pupils, including those with special educational needs; gifted and talented; EAL; disabilities; and be able to use and evaluate distinctive teaching approaches to engage and support them;
- Demonstrate an understanding of and take responsibility for promoting high standards of literacy including the correct use of spoken English (whatever your specialist subject);
- If teaching early reading, demonstrate a clear understanding of appropriate teaching strategies e.g. systematic synthetic phonics;
- Use an appropriate range of observation, assessment, monitoring and recording strategies as a basis for setting challenging learning objectives for pupils of all backgrounds, abilities and dispositions, monitoring learners' progress and levels of attainment;
- Make accurate and productive use of assessment to secure pupils' progress;
- Give pupils regular feedback, both orally and through accurate marking, and encourage pupils to respond to the feedback, reflect on progress, their emerging needs and to take a responsible and conscientious attitude to their own work and study;



- Use relevant data to monitor progress, set targets, and plan subsequent lessons;
- Set homework and plan other out-of-class activities to consolidate and extend the knowledge and understanding pupils have acquired as appropriate;
- Participate in arrangements for examinations and assessments within the remit of the School Teachers' Pay and Conditions Document.

Behaviour and safety:

- Establish a safe, purposeful and stimulating environment for pupils, rooted in mutual respect and establish a framework for discipline with a range of strategies, using praise, sanctions and rewards consistently and fairly;
- Manage classes effectively, using approaches which are appropriate to pupils' needs in order to inspire, motivate and challenge pupils;
- Maintain good relationships with pupils, exercise appropriate authority, and act decisively when necessary;
- Be a positive role model and demonstrate consistently the positive attitudes, values and behaviour, which are expected of pupils;
- Have high expectations of behaviour, promoting self-control and independence of all learners;
- Carry out playground and other duties as directed and within the remit of the current School Teachers' Pay and Conditions Document;
- Be responsible for promoting and safeguarding the welfare of children and young people within the school, raising any concerns following school protocol/procedures.

Team working and collaboration:

- Participate in any relevant meetings/professional development opportunities at the school, which relate to the learners, curriculum or organisation of the school, including pastoral arrangements and assemblies;
- Work as a team member and identify opportunities for working with colleagues and sharing the development of effective practice with them;
- Contribute to the selection and professional development of other teachers and support staff including the induction and assessment of new teachers, teachers serving induction periods and where appropriate threshold assessments;
- Ensure that colleagues working with you are appropriately involved in supporting learning and understand the roles they are expected to fulfil;
- Take part as required in the review, development and management of the activities relating to the curriculum, organisation and pastoral functions of the school;
- Cover for absent colleagues within the remit of the current School Teachers' Pay and Conditions document.



Wider professional responsibilities:

- Work collaboratively with others to develop effective professional relationships;
- Deploy support staff effectively as appropriate;
- Communicate effectively with parents/carers with regard to pupils' achievements and well-being using school systems/processes as appropriate;
- Communicate and co-operate with relevant external bodies;
- Make a positive contribution to the wider life and ethos of the school.

Administration:

- Register the attendance of and supervise learners, before, during or after school sessions as appropriate;
- Participate in and carry out any administrative and organisational tasks within the remit of the current School Teachers' Pay and Conditions Document.

Professional development:

- Regularly review the effectiveness of your teaching and assessment procedures and its impact on pupils' progress, attainment and well-being, refining your approaches where necessary, and responding to advice and feedback from colleagues;
- Be responsible for improving your teaching through participating fully in training and development opportunities identified by the school or as developed as an outcome of your performance management review.

Other:

- To have professional regard for the ethos, policies and practices of the school in which you teach, and maintain high standards in your own attendance and punctuality;
- Perform any other reasonable duties as requested by the headteacher.

General responsibilities applicable to all staff:

- To demonstrate and promote the values of Cornwall Education Learning Trust at all times.
- To work effectively with other members of staff to meet the needs of all pupils.
- To work with professionalism in line with the Trust's Code of Conduct.
- To attend staff meetings and Trust-based INSET as required.
- To be responsible for his/her own self-development on a continuous basis, undertaking any training/professional development as appropriate.
- To be aware of and adhere to all applicable Trust policies and procedures.
- To maintain at all times the utmost confidentiality with regard to all reports, records, personal data relating to staff and pupils and other information of a sensitive or confidential nature acquired in the course of undertaking duties for the Trust, with due regard to General Data Protection Regulations.



Note:

- This job description is illustrative of the general nature and level of responsibility of the work to be undertaken commensurate with the grade. It is not a comprehensive list of all the responsibilities, duties and tasks relating to the post.
- The postholder may be required to undertake such work as may be determined by the headteacher/line manager from time to time, up to or at a level consistent with the main responsibilities of the job.
- This job description may be amended at any time in consultation with the postholder.

SPECIAL CONDITIONS OF EMPLOYMENT:

Cornwall Education Learning Trust is committed to safeguarding and promoting the welfare of children and young people and expects all staff to share this commitment. The postholder is required to follow all of the Trust's policies and procedures in relation to safeguarding at all times, and to adhere to the statutory guidance 'Keeping Children Safe in Education'. The postholder must take appropriate action in the event that they have concerns, or are made aware of the concerns of others, regarding the safety or wellbeing of children or young people.

All offers of employment are conditional and subject to satisfactory pre-employment checks including receipt of original qualification documents, references, medical screening, proof of eligibility to work in the UK, Childcare Disqualification check and a Disclosure and Barring Service (DBS) check.



Qualifications and Professional Development

Essential	Desirable
Good Honours Degree, PGCE or equivalent Qualified Teacher Status	Teaching Experience with the age range and/or subjects applying for

Experience

Essential	Desirable
Ability to create a stimulating and safe learning environment	Knowledge of current education and professional developments and an understanding of their application in a whole school context.
Ability to plan, prepare and deliver the curriculum as relevant to the age and ability group/subject that you teach	
Ability to assess and record the progress of pupils' learning to inform next steps and monitor progress	
To teach using a wide variety of strategies to maximise achievement for all children, including those with special educational needs and high achievers	
Ability to successfully deploy a wide range of effective behaviour management strategies	
High level of oral and written communication skills and an ability to work in partnership with other staff	
Excellent ICT Skills and ability to use ICT to advance pupils' learning	
A passion for outdoor learning and a child-led curriculum	

Knowledge & Skills

Essential	Desirable
Demonstrates an awareness, understanding and commitment to the protection and safeguarding of children and young people	Self-motivated and ability to use own initiative
Demonstrates an awareness, understanding and commitment to the protection and safeguarding of children and young people	Ability to be flexible and adaptable



Applying to CELT

We welcome applications via My New Term in the CELT Careers section of our website: www.celtrust.org. If you are interested in this role and would like to find out more before applying, please contact Emma Williams, headteacher at ewilliams@car.celtrust.org.

We want every candidate to know exactly what to expect from our recruitment process. All CELT application packs clearly set out key information : salary, interview dates, and application deadlines. All line managers involved in recruitment are trained to recognise and reduce bias, ensuring a fair and consistent experience for every applicant.

More information about our approach can be found in our Recruitment and Selection Policy via the trust website.



Safeguarding

Safeguarding is the golden thread through CELT - safeguarding is everyone's responsibility. We promote an open culture of learning and development where good practice is celebrated and mistakes are used to learn and improve practice and therefore outcomes for our learners.

A whole-school approach to safeguarding means listening to the voices of everyone in the school community. This includes learners as well as parents, carers and school staff.



Amy Daniels
Director of Inclusion

All offers of employment are conditional and subject to satisfactory pre-employment checks including receipt of original qualification documents, references, medical screening, proof of eligibility to work in the UK, Childcare Disqualification check and an Enhanced Disclosure and Barring Service (DBS) check.



People Services

Our vision is to build and nurture a talented, diverse team who are proud to deliver exceptional education across our Trust.

We believe in working together, treating everyone fairly, and always learning and growing. We are committed to creating a safe, inclusive, and supportive workplace where every colleague feels valued and inspired to do their best.

By investing in and caring for our people, we unlock their potential – enabling them to make a real difference to our schools, our learners and the communities we serve.

CEL T is committed to developing and empowering staff by ensuring that every colleague has the opportunity to thrive in their current role while being prepared for future opportunities.

Lea Randall
People Services Lead



Lea Randall
People Services Lead

**Empowering
our people to
support, teach
and lead**



Claire White
Headteacher

I feel privileged to have been part of SW100's cohort 2. I finished the year a different leader to the one I was 12 months before and I've never been more committed to change in our system. It reinforced my belief that teaching truly is the best job in the world.



Andrew Gasiorowski
IS Manager

I joined Brannel School as an apprentice and now manage the information services team at Poltair School. Working at CEL T has enabled me to progress professionally and has provided opportunities for me to work on strategic projects across the Trust.



Rebecca Blizzard
Assistant Headteacher

From gaining valuable leadership experience as Head of Science I felt ready and supported to become an Assistant Headteacher. I value the range leadership opportunities at CEL T and the strong collaboration amongst colleagues and our family of schools.

Staff Entitlement

As a Trust we understand that we have a responsibility to create a future-focused team that is ready for change and able to support our development. Part of this future planning involves succession planning and dynamic talent management.

Talent management is crucial at both a strategic and an individual level. It is about the value that every individual brings to Cornwall Education Learning Trust. By understanding people's strengths and unique contributions, we can ensure that they receive the development they need to have the maximum impact in their current and future roles.



Personal Growth & Inspiration:

- Exceptional development opportunities through training, mentoring, and networking.
- Complimentary access to Inspiring the South West conferences to fuel your ambition.



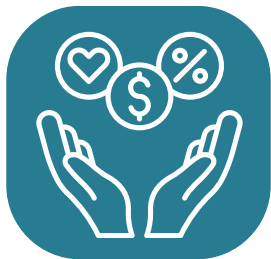
Health & Wellbeing:

- Free annual flu jabs, health screenings, and eye tests to keep you feeling your best.
- Discounted gym and leisure centre memberships to support your fitness goals.
- Wisdom app access for mental health support, mindfulness, and resilience.
- Confidential helpline and counselling through Health Assured, available 24/7.



Family & Flexibility:

- Up to 5 days paid emergency leave for dependants when life throws a curveball.
- Family-friendly policies and flexible working arrangements to help you balance work and home.



Perks & Extras:

- Cycle to Work scheme to promote greener commuting and save on bike purchases.
- Generous public sector pension scheme to invest in your future.



CELT CENTRE OF
EXCELLENCE

At CELT, we believe inspiration should flow through our staff as much as our students. Great teaching comes from colleagues who are curious, ambitious and continually developing their practice. Professional learning isn't an add-on – it's part of who we are.

The CELT Centre of Excellence at Penrice Academy brings this vision to life. It offers a place to reflect, learn and plan next steps, supporting colleagues at every stage of their career. Through programmes such as Future Leaders, New and Aspiring Leaders, and the upcoming Flourishing Programme, the Centre provides clarity, connection and opportunity for all roles across CELT.

Our aim is simple: to help every colleague grow, feel valued and thrive. By investing in ourselves, we strengthen our culture and keep inspiration at the heart of our classrooms.

CLICK HERE



"CELT is where teaching talent takes flight, and connection becomes the fuel that propels us forward. With comprehensive support, collaborative communities, mentoring, research-informed practice, and an unwavering focus on equity, CELT creates an environment where both teachers and learners thrive."



Hayley Bissenden

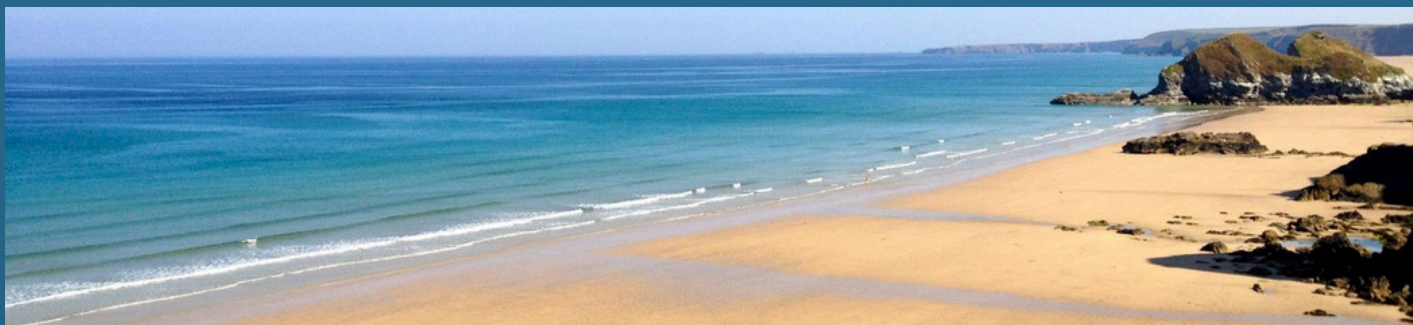
Hayley Bissenden
Director of the
Centre of Excellence





Living and Working in Cornwall

A Life That Feels Different—in the Best Way



Cornwall offers a rare blend of meaningful work, breathtaking surroundings and an exceptional quality of life. Our schools sit at the heart of proud, supportive communities where relationships matter and staff quickly feel part of something bigger.

Community

Cornwall's towns and villages are close-knit, welcoming and full of character. Families are deeply invested in their local schools, and the strong partnership between home and school is a defining feature of life here. When you join us, you're joining a place where people genuinely look out for one another.

Lifestyle

From beaches and rugged coastline to moorland and open countryside, Cornwall's natural beauty is always within easy reach. Shorter commutes and access to the outdoors help create a healthy balance between work and life—and the space to truly recharge.



Infrastructure

Cornwall is ambitious about its future. From major road improvements such as the upgraded A30 to enhanced digital connectivity and the convenience of Cornwall Airport Newquay, the region continues to invest to keep people connected and moving.

Families

Safe communities, excellent schools, and a huge range of activities make Cornwall an exceptional place to raise children. Whether it's beach days, outdoor adventures or creative arts, there's always something to inspire young minds.